

# Neil Jeffares, *Dictionary of pastellists before 1800*

## Online edition

### **BOLOMEY, Benjamin Samuel**

Lausanne 19.V.1739–19.XII.1819

Bolomey, or Bolomay, was a pupil at the Académie royale in Paris under Vien from 1758, winning third prize in 1760, and being influenced by Boucher and La Tour. He was in The Hague from 1763, where, the following year, he was admitted to the Confrerie Pictura: Terwesten's 1776 register noted that he was a pupil of Vien, and was a portrait and history painter, "maartevens ook een fraaij Craijonneerder." Still in The Hague, on 8.XI.1767, he married Elisabeth Veronica Gosse. He had returned to Lausanne by 1792 after which his output was greatly reduced. His movements between these dates are not fully documented, but there was a six month trip to Switzerland and Italy via Belgium and France in 1775.

He worked in various media. While the portraits before about 1780 seem almost primitive, Bolomey's pastels occasionally reach a suave sophistication that is neither Dutch, nor yet quite French. At his best his pastels appear to be highly finished and expressive. A good many drawings in mixed media (chalk, pastel and watercolour) forming the Cahier vert and the series of miniature patriots from the Vaud region are in the Musée historique de Lausanne (or on loan to the musée de l'Élysée), and have not been fully catalogued here.

#### **Monographic exhibitions**

Bolomey 2001: *Benjamin Samuel Bolomey 1739–1819*, The Hague, Haags Historisch Museum, 15.XII.2001 – 17.III.2002; Prangins, château, musée national suisse, 14.VI.–9.IX.2002. Cat. Laurent Golay & al.

#### **Bibliography**

Agassiz 1928; Agassiz 1928–29; Bénézit; Ekkart 2014; Gahtgens & Lugand 1988, p. 334; La Roche 1858, p. 386f; Lepdor 1998; Molin 1902; Saur; Spliethoff 2014; Terwesten 1776

#### **Pastels**

J.165.101 Jacques-Adrien-Isaac BIGOT DE VILLANDRY (1709–1775), pstl/ppr, 75.3x56.7, s ✓ "Bolomey", c.1765–70 (Amersfoort, Rijksdienst voor het Culturele Erfgoed, inv. C867. Desc.). Exh.: Bolomey 2001, no. 22 repr. Lit.: The Hague 1996, p. 7 φ

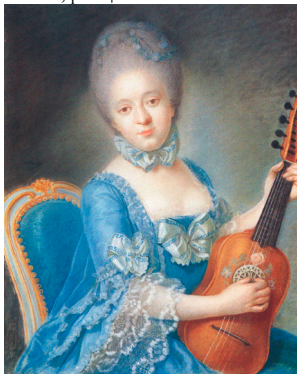


J.165.103 ~head, pstl/ppr, 36.5x29, c.1770–75 (Roosendaal, Museum De Ghulden Roos, inv.

2289. F. L. van Schuylenburch van Bommenede, Drempt, 1952). Exh.: Bolomey 2001, no. 23 repr. Lit.: The Hague 1996, p. 7 φ



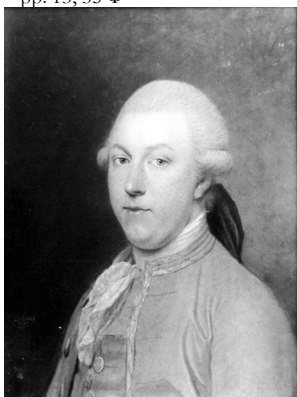
J.165.105 Wilhelmina Elisabeth BIGOT DE VILLANDRY (1738–1812), pstl/ppr, 74x56, sd ← "Bolomey 1766" (The Hague, Historisch Museum, inv. TEK-1952x0003. Desc.). Exh.: Bolomey 2001, no. 2 repr. Lit.: The Hague 1996, p. 7 φ



*Bigot, v. Randwijck*

J.165.108 Mlle BOURGEOIS, cr. chr, ov. (Lausanne, musée historique, inv. 84698) φ

J.165.11 Hendrik Adriaan CAAN (1755–1816), pstl, 55x45, sd ✓ "B. Bolomey 1781"; & pendant: J.165.111 spouse, née Suzanna Jacoba Johanna van Neck (1760–1846), 55x45, 1781 (baron C. van Heerdt, The Hague 1946; PC 2001). Exh.: Rotterdam 1946, no. 2/3 n.r.; Bolomey 2001, no. 52/53. Lit.: Agassiz 1928, pp. 13, 35 φ



J.165.114 Frederik Gijsbert van DEDEM TOT DE GELDER (1743–1820), Dutch ambassadeur bij de Porte 1785–1809; & pendant: J.165.115 épouse, née Adriana Frederica Sloet tot Lindenhorst (1745–1815), pstl/ppr, 52x41 ov., sd "Bolomey 1785" (desc.: Van Pallandt–Van Knobelsdorff, Kasteel Het Jijenhuis, Heino 1934; Van de Poll-Wolters-Quina Stichting; acqu. 1958). Exh.: Amsterdam 2015, no. 94/95; Amsterdam 2018, p. 15/14 repr. Lit.: Agassiz 1928–29, p. 346; Ekkart 2014, fig. 2/1, identified φ



J.165.118 Emmanuel DEVELEY (1764–1839), homme de science, historien, cr. chr, 10.5x7.5 ov., c.1800 (Lausanne, musée historique, dep.: musée de l'Élysée, série de patriotes vaudois). Exh.: Lausanne 1987, no. 154 repr. φ



J.165.12 Jean-Samuel FRANÇOIS (1744–1800), homme de science, cr. clr, 10.5x7.5 ov., c.1800 (Lausanne, musée historique, dep.: musée de l'Élysée, série de patriotes vaudois). Exh.: Lausanne 1987, no. 152 repr. φ



J.165.121 [?][?] François-Louis GEOFFRIN (1665–1749), secrétaire du roi, pstl, 61x52, sd ← “Bolomeÿ /fecit/?1764” (PC 2011). Exh.: Paris 2006g, no. 23 repr.; Châtenay-Malabry 2011, no. 9 repr. [??identification] φ?δv



J.165.122 Aert van der GOES (1741–1789), pstl/ppr, 67x55, c.1775; & pendant: J.165.123 spouse, née Anna Louisa van Pabst (1753–1820), pstl/ppr, 67x55, c.1775 (Delft, Prinsenhof Museum, inv. B 3-51. Dep. Stichting familie-archief Van der Goes van Naters). Lit.: Dick van Broekhuizen, *De aert van de familie Van der Goes van Naters*, Delft, 2000, -/p. 46; Bolomey 2001, no. -/40 n.r. Φ



Photos courtesy Gemeente Musca Delft

J.165.127 Christophe HELMHOLDT de Bracan, cr., sanguine, pstl, 11.4x8.5, 1795 (Lausanne, musée historique, inv. I.50.D.24)

J.165.128 Mme HELMHOLDT, née Louise Anne Sophie de Bracan, tournée vers sa dr.; visage allongé à carnation claire; des yeux clairs; cheveux bruns; de fines petites boucles dépassant d'un bonnet blanc à double volant de dentelle; en robe beige clair à longues manches et à col carré; fichu blanc inséré dans le col de la robe; autour du cou, un ruban noir avec un médaillon en or ou camée, fond gris, crayon, sanguine, pstl, 11.4x8.5 (Lausanne, musée historique, inv. I.50.D.23)

J.165.129 Baron Abraham Francisco LOPES SUASSO (1724–1789), 57x46.5, sd “Bolomay 1769” (L. B. van Nierop, Amsterdam, 1934). Exh.: Amsterdam 1934, no. 3 n.r.

J.165.13 =? pstl/ppr, 23.5x19.5, sd “Bolomey 1769” (desc.; Connecticut PC 2001). Exh.: Bolomey 2001, no. 10 φ



J.165.132 [?] La baronne LOPES SUASSO, née Rachel d'Avernas le Gras, 57.7x47, sd \ “Bolomey 1775” (L. B. van Nierop, Amsterdam, 1934). Exh.: Amsterdam 1934, no. 4 n.r.; Bolomey 2001, no. 36 repr. φ



J.165.134 [?] [Mme] Joseph Salvador, née Leonora (Rachel) LOPES SUASSO d'Avernas le Gras [(1720–1766)], pstl/ppr, 24x20, sd “Bolomey 1769” (desc.; PC Connecticut 2001). Exh.: Bolomey 2001, no. 11 [posthumous portrait if sitter correctly identified] φδv



Pabst, v. Goes

J.165.137 [Gravin] Steven Walraven van RANDWIJCK, née] Carolina Diana Bigot de Villandry [(1741–1804)]; & pendant: J.165.138 sister, [Gravin] George van Randwijck, née] Hélène Madelaine Bigot de Villandry [(1747–1775)], [daughters of Jacques-Adrien-Isaac Bigot de Villandry] pstl, 72x56, one sd “Bolomey/1756” (London, Sotheby's, 10.III.1977, Lot 128 n.r., £130)

J.165.139 Mozes SALVADOR (1748–1824), pstl/ppr, 31x24, 1771?; & pendant: J.165.14 spouse, née Sara Lopes Suasso (1748–1824), pstl/ppr, 31x24, 1771? (desc.; PC Netherlands). Exh.: Bolomey 2001, no. 20/21 repr. φ





J.165.141 [?][?] Horace-Bénédict de SAUSSURE (1740–1799), savant, pstl/pchm, 43x33 (Paris, Drouot, Arteal, 28.III.2026, Lot 45 repr., éc. suisse, est. SwFr 200–300, SwFr 260) [new attr.; identification rejected] φα?δν



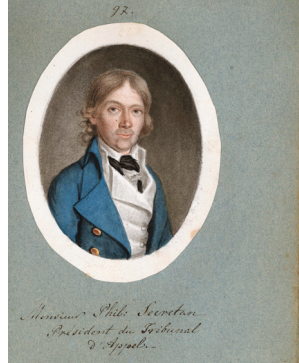
J.165.143 Willem van SCHUYLENBURCH, heer van Bommene (1717–1769), gedeputeerde ter Staten-Generaal, pstl/ppr, 73x54, sd √ “Bolomeÿ 1764” (The Hague, Historisch Museum, inv. TEK-1952x0001. Desc.: Jhr van Schuylenburch van Bommene, Villa Oase, de Bilt bij Utrecht 1905). Exh.: Bolomey 2001, no. 2 repr. Lit.: Moes 1897–1905, II, no. 7103/2; Agassiz 1928, p. 36; The Hague 1996, p. 7 φ



J.165.145 Philippe-Abram-Louis SECRETAN (1756–1826), juge, directeur helvétique, cr. clr, 10.5x7.5 ov., c.1800 (Lausanne, musée historique, dep.: musée de l'Élysée, série de patriotes vaudois). Lit.: Bolomey 2001, p. 196 repr.; Secrétan 2003, pl. V φ



J.165.147 ~repl., in reverse, cr. clr, ov. (Lausanne, musée historique, cahier vert, no. 97)



J.165.149 Isaac TEIXEIRA, Jr (1753–1828), pstl/ppr, 52x43, 1766 (L. B. van Nierop, Amsterdam, 1934; desc., PC 2001). Exh.: Amsterdam 1931, no. 342; Amsterdam 1934, no. 5 attr.; Bolomey 2001, no. 4. Lit.: Agassiz 1928, p. 35 φ



J.165.151 Homme âgé en habit bleu, pstl, 72.5x57, sd √ “B. Bolomeÿ 1767”, inscr. √ “Anno Aetatis suae LXXXVII” (Baszenger, London; London, Sotheby's, 23.V.1979, Lot 57 repr.; Eric Scowen, London; London, Sotheby's, 31.X.1979, Lot 83; New York PC; New York, Sotheby's, 17.IV.1986, Lot 16, \$2250 with others). Lit.: Bolomey 2001, no. 6 φ

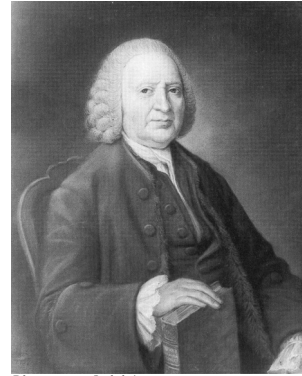


Photo courtesy Sotheby's

J.165.154 Homme en habit bleu brodé, pstl, 63x52 (Stockholm, Bukowskis, 5.XII.2012, Lot 493 repr., Éc. fr., est, SKr15–18,000, b/i) [new attr., ?] φαν



J.165.156 Femme, pstl/ppr, 73.5x57.3, 1767 (Lausanne, musée cantonal de Beaux-Arts, inv. 57-1. M. Lombard, joaillier; acqu. 1957). Exh.: Lausanne 2000, no. 14 n.r.; Bolomey 2001, no. 5. Lit.: Lepdor 1998, p. 135 φ

J.165.159 Femme en buste, pstl, 59x49, sd “Bolomey 1783” (Geneva, Christie's, 24.IV.1970, Lot 401 repr.). Lit.: Bolomey 2001, no. 55 n.r. φ



J.165.161 Onbekende vrouw met handschoen in hand, pstl, 77.5x62, c.1770 (Delft, Prinsenhof Museum, inv. B 3-70. Dep. Stichting familie-archief Van der Goes van Naters). Lit.: Jeffares 2006, p. 572Aii, Dutch sch. [new attr., ?] φ



*Photo courtesy Gemeente Musea Delft*

J.165.164 Homme en habit brun, pstl, 72.5x57, sd 1767; & pendant: J.165.165 Dame en robe blanche avec rubans bleus, tenant une rose, pstl, 72.5x57, sd 1767 (Baszenger, London; London, Sotheby's, 23.V.1979, Lot 41 repr.; Eric Scowen, London; London, Sotheby's, 31.X.1979, Lot 83, £1900; New York PC; New York, Sotheby's, 17.IV.1986, Lot 16, \$2250 with others). Lit.: Bolomey 2001, nos. 7/8 Φ



*Photos courtesy Sotheby's*