

Neil Jeffares, *Dictionary of pastellists before 1800*

Online edition

NB: This article is divided into the following pdfs:

- Part I: Essays and autoportraits
- Part II: Named sitters A–E
- Part III: Named sitters F–L
- Part IV: Named sitters M–R
- Part V: Named sitters S–Z
- Part VI: Unidentified sitters etc.

Follow the hyperlinks for the remaining sections.

LIOTARD, Jean-Étienne

Geneva 1702–1789

Part III: Named sitters F–L

J.49.1442 Elizabeth FAGEL (1735–1759), pstl/pchm, 57x49.5, 1756 (The Hague, Gemeentemuseum, inv. C525. Desc. famille Fagel, The Hague; Van Limburg Stirum, 1947). Exh.: Liotard 1985, no. 49 repr., as of Johanna Catharina Fagel. Lit.: Staring 1947, pl. 18, as of Marie-Suzanne Fagel; L&R 200 repr., as of Johanna Catherina Fagel, Mevr. W. R. van Tuyl; Dubois & Dubois 1993, p. 328 repr.; Goes & de Meyere 1996, pp. 91f repr., as Elisabeth Fagel; Bolomey 2001, fig. 18; R&L 330, fig. 474 Φ



~cop., sd “EBD/1761” (*Slot Zuylen, inv. S69*), v. *Dierkens*

~pnt. Bolomey (Lausanne). Lit.: R&L p. 486, fig. 475

J.49.1446 Jeanne FARGUES (1737–1813), sœur de Mme Liotard, pstl, 1757 (Liotard 1778). Lit.: L&R 211 n.r.; Liotard 1985, no. 72 n.r.; R&L 337 n.r.

Fenelon FARQUES (London, Christie’s, 15.IV.1929), v. *English sch., Fénelon*

J.49.1448 Charles-Simon FAVART (1710–1792), auteur dramatique, pstl/ppr, 70x55, extended top, right and bottom, sd \nearrow “par J. E. Liotard/1757” (Charles-Nicolas Favart (1749–1806), fils du modèle, Paris; son fils Antoine-Pierre-Charles Favart (1780–1867). Mlle Favart 1874. Georges & Henri Pannier, Paris, 1909. Xavier Givaudan, Geneva; sa fille, Mme Lambotte, Geneva). Exh.: Paris 1874a, no. 625 n.r.; Paris 1885b; Paris 1908a, no. 65, pl. 52; Paris 1934a, no. 190; Paris 1948d, no. 12; Liotard 2015a, no. 65 repr.; Lausanne 2018, no. 17, repr. p. 36. Lit.: Portalis 1885, p. 443; Humbert, Revilliod & Tilanus 1897, no. 46 n.r.; Lemoisne 1907, repr.; Jullien 1908; Brieger 1921, p. 107; L&R 212 repr.; Goodman 2000, repr.; R&L 344, fig. 490; Baker 2023, fig. 34 $\Phi\sigma$



LARGER IMAGE

J.49.145 ~?version, pstl (François-Martial Marcille; Paris, Pillet, 4–7.III.1857, Lot 262, “portrait de Favart, pastel gravé”)

J.49.14501 =?Favart et sa femme, pastels de Madame Favart?, pstl (Marcille 1843). Lit.: Lacroix 1843

J.49.1451 =?pstl, 58x48 (Hippolyte Walferdin; vente p.m., Paris, Drouot, Escribe, 12–16.IV.1880, Lot 355 n.r., fr50; Haro)

~grav. Claude-Antoine Littret de Montigny (FD 1364), for Favart, *Théâtre*, Paris, 1763. Lit.: L&R 212¹; R&L p. 496, fig. 491

~grav. Nicolas Lejeune. Lit.: R&L p. 496 n.r.

J.49.1453 ~cop., pstl/pchm, 60x50.5 (Paris, Drouot, Oger-Dumont, 1.XII.2004, Lot 6 repr., pstl/ppr, est. €2–3000, €3600; La Rochelle, Lavoissiere Gueilhers, 11.VI.2005, repr., pstl/pchm, attr.; Paris, Sotheby’s, 19.VI.2006, Lot 48 repr., atrl de Liotard, est. €4–6000. Galerie Frédérick Chanoit 2008. Vienna, Dorotheum, 24.X.2013, Lot 139 repr., est. €4–6000; PC; Paris, Artcurial, 14.II.2017, Lot 484 repr., entourage de Liotard, est. €3–4000. Versailles, Osenat, 19.III.2022, Lot 232 repr., atelier, est. €2500–3000; Paris, Delorme & Collin du Bocage, 23.VI.2023, Lot 32 repr., atelier de l’artiste, est. €3–4,000). Lit.: *Gazette Drouot*, 3.VI.2005, p. 199 repr.; R&L p. 496, fig. 492 $\Phi\kappa\sigma$



J.49.1455 Mme Charles-Simon FAVART, née Marie-Justine Benoîte Cabaret Duronceray (1727–1772), pstl/pchm, 70x55, sd \nearrow “par J. E. Liotard/1757” (Winterthur, Museum Oskar Reinhart am Stadtgarten. Charles-Nicolas Favart (1749–1806), fils du modèle, Paris; son fils Antoine-Pierre-Charles Favart (1780–1867). Mlle Favart 1874. [comte C; Paris, Drouot, 30.IV.1898, fr240]. Henri Pannier, Paris, 1909; M. Kaganovitch, dealer, Paris.

Acqu. 1935). Exh.: Paris 1874a, no. 624 n.r.; Paris 1885; Paris 1908a, no. 64, pl. 53; Paris 1934a, no. 191; Berlin 1993a, no. 1 repr.; Liotard 2015a, no. 64 repr. [London only]. Lit.: Portalis 1885, p. 443; Lemoisne 1907, repr.; Jullien 1908; Brieger 1921, p. 106; Fosca 1956, pl. VII; L&R 213 repr. clr XI; Apgar 1995, p. 20 repr.; Goodman 2000, repr.; Koos 2007, fig. 8; R&L 345, fig. 489; Koos 2014, p. 178 repr.; Baetjer 2019, fig. 70.2 $\Phi\sigma$



LARGER IMAGE

Photo courtesy Museum Oskar Reinhart am Stadtgarten, Winterthur

~repl., pnt, 71x58, 1757 (La Chau-de-Fonds, musée des Beaux-Arts, inv. 1306-13. Comte Robert de Montesquiou, Paris; comte de Guy, Grasse; Galerie Moos, Geneva, 24.VI.1930, Lot 101 bis. René & Madeleine Junod; don 1986). Lit.: R&L p. 498 n.r.

J.49.1456 =?Favart et sa femme, pastels de Madame Favart?, pstl (Marcille 1843). Lit.: Lacroix 1843

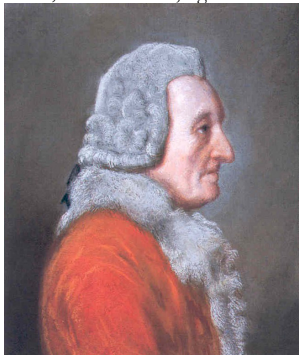
~cop., v. *Boissel; Duronceray*

J.49.146 [?]Mme Charles-Simon FAVART, née Marie-Justine Benoîte Cabaret Duronceray, cantatrice, pstl, 60.4x49.0, sd \leftarrow “liotard/17[53]”, the score inscr. “ne perir giammai potrà” (Galerie Moos, Geneva; acqu. Aimé Martinet, Geneva, .I.1937. Bern, Stuker, 1.III.1966, Swfr15,000; Bern, Stuker, 18.XI.1966, Lot 3825; Stuker; Bern, Stuker, 26.X.1989, Lot 5056 repr.; London, Christie’s, 11.XII.1990, Lot 120 repr., est. £20–30,000, b/i; Zurich, Koller, 17.XI.1994, Lot 3062 repr.; Zurich, Koller, 22.III.1995, Lot 64). Exh.: Geneva 1948, no. 2. Lit.: Humbert, Revilliod & Tilanus 1897, no. 47 n.r.; L&R 16 repr., as 1736; R&L 203, fig. 337, as of Mme Favart, 1753 $\Phi\delta\sigma$



J.49.1462 ~cop., as of Mme Soffreon, pstl. Lit.: R&L p. 412 n.r.

J.49.1463 Pierre FAVRE (1695–1788), pstl/ppr, 23x19, 1780 (Geneva, Villa La Grange, inv. LG 4920. Guillaume Favre (1770–1851); desc. William Favre 1886; don 1918). Exh.: Liotard 1886, no. 28; Geneva 1896, no. 414; Geneva 1906, no. 99; Liotard 1925; Geneva 1948, no. 58; Liotard 2002a, p. 103 repr. Lit.: Humbert, Revilliod & Tilanus 1897, no. 49 n.r.; L&R 327 repr.; Liotard 2006, p. 102 repr.; R&L 535, fig. 751; Liotard 2015a, fig. 56 Φ



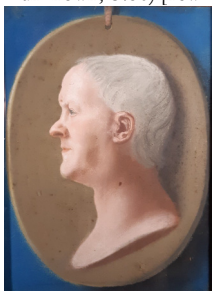
J.49.1464 ~cop., pstl, 21x17 (Geneva, Genève Enchères, 3.V.2023, Lot 1 repr., est. Swf400–600) φκ

J.49.1465 Sir Everard FAWKENER (1694–1758), silk merchant and ambassador to the Porte, pstl/pchm, 53x45 [formerly framed to 39x34 ov.], 1754 (London, V&A, inv. FA 500. Acqu. 1860). Exh.: Liotard 2015a, no. 40 repr. Lit.: Humbert, Revilliod & Tilanus 1897, no. 50 n.r.; L&R 160 repr.; Lambourne & Hamilton 1980, repr. in reverse; R&L 288, fig. 421 φσ



J.49.1467 ~cop. (olim Earl of Radnor, Longford Castle, cat. no. 50). Lit.: L&R s.no. 160 n.r.

J.49.14671 ~cop., pstl/ppr, 47x35.5 (Casa Delmonte Antiques, Palma de Mallorca, as unknown, €450) [new identification] φκν



J.49.1469 Lady FAWKENER, née Harriet Churchill (1725–1777), ∞ 1747 Sir Everard Fawkener, later Mrs Thomas Pownall, pstl/pchm, 74x59, c.1754 (Compton Verney, inv. CVCS 0288.B. [The sitter's son, William Augustus Fawkener (1747–1811); his daughter, Mary, Countess of Orford (1787–1860); Wolterton, drawing room, 1829; William Frederick, Earl Waldegrave (1851–1930); London, Christie's, 14.V.1920, Lot 100 n.r., as of Lady Mary Faulkner, the sitter's mother-in-law, 480 gns,

Sabin, for Marcus Samuel, 1st Viscount Bearsted; desc.: grandson, P. M. Samuel, 4th Viscount Bearsted, Farley Hall, Farley Hill, Berkshire; London, Sotheby's, 10.VII.2002, Lot 214 repr., est. £400–600,000, £660,000 [=£732,650]; acqu.). Exh.: London 1935, no. 39, as member of Foley family; Vienna 2006, no. 14 repr.; Liotard 2015a, no. 42 repr.; Liotard 2023, fig. 35. Lit.: John Chambers, *A general history of the county of Norfolk*, Norwich, 1829, I, p. 217, as of "Lady Fawkner", identified on same page as Harriet, dau. of general Churchill; Fosca 1956, pl. VI; Manners 1933, repr. opp. p. 301; Johnson 1976, pl. 15; L&R 161 repr.; R&L 284, fig. 417; Baker 2023, fig. 27 Φσ



LARGER IMAGE Zoomify

Photo courtesy Sotheby's

Jacques FÉNELON (Stockholm, Bukowskis, 14.XII.1929, Lot 569 repr., as by Liotard), v. *English sch.*

J.49.1473 Erzherzog FERDINAND KARL (1754–1806), ?dessin colorié. Lit.: R&L 517 n.r.

FERDINAND (Rijksmuseum), v. *Maximilian*

J.49.1475 Marie-Anne-Françoise Liotard, Mme Moïse de FERNEX, ?pstl, a.1784 (Pierre-Étienne Baron 1784). Lit.: R&L 538 n.r.

Marie-Anne-Françoise Liotard, Mme de FERNEX, v. *Marie-Thérèse Liotard*

J.49.1477 Mrs Brice FISHER (∞ 1732), née Ann de La Chambre (–p.1767), of Craig's Court, Charing Cross, ∞ MP for Boroughbridge, in bright blue satin cape, black hat over white lace cap, pstl, pstl, 54.5x42.5 (London, Christie's, 6.III.1914, Lot 42 n.r., 260 gns; Fisher)

J.49.1478 William, 3rd Earl FITZWILLIAM (1719–1756), pstl, 58x48, 1754–55 (desc.: Earl Fitzwilliam, Milton Hall, Peterborough; PC). Lit.: L&R 185 repr.; R&L 281, fig. 414 φ



~?cop. Lady Fitzwilliam, q.v.

Fleurien, v. Claret

J.49.1482 Bernard Le Bovier de FONTENELLE (1657–1757), écrivain, m/u. Lit.: Fosca 1928, m/u, 1748–52, n.r.; L&R, s.no. 13, n.r.; R&L s.no. 21

=?min., 1734 (Winterthur, Museum Briner und Kern). Lit.: L&R 13 n.r.; R&L 21; Jeffares 2015c [?1750, when Fontenelle mentions Sere

and Liotard in Paris, letter to Vernet, 7.XI.1750] ~grav. Liotard 1734, n.r. Lit.: L&R, s.no. 13, n.r.; R&L 22

Fox, v. Holland

Benjamin FRANKLIN (Paris, 8.III.1920, Lot 13, as Liotard) [v. *German sch.*]

J.49.1487 Kaiser FRANZ I. STEPHAN, Herzog von Lothringen (1708–1765), pstl/pchm, 66x53, 1744 (Weimar, Schloßmuseum, inv. G 66). Exh.: Karlsruhe 2015, no. 37, repr. p. 73. Lit.: Humbert, Revilliod & Tilanus 1897, no. 5 n.r.; Vienna 1980, fig. 146.4.II.11; L&R 60 repr.; R&L 112, fig. 189 φσ



Photo courtesy Stiftung Weimarer Klassik und Kunstsammlungen

~v. pendant, Maria Theresia

J.49.1488 ~repl., pstl/pchm, 66x53 (Leopold-Philippe, duc d'Arenberg (1690–1754), Bruxelles; son fils, Charles-Marie-Raymond, duc d'Arenberg (1721–1778); desc.: Engelbert-Charles, duc d'Arenberg (1899–1974), Monte Carlo; sa veuve, nee Mathilde Calley (1913–1989); don: member of staff; desc.: Vienna, Dorotheum, 25.X.2023, Lot 131 repr., with pendant J.49.2001, est. €8–12,000). Lit.: Edouard Laloire, *Seigneurie d'Engghien. Documents & notices concernant l'histoire de la seigneurie d'Engghien*, Engghien, 1914/22, p. 172 "tout gâtés", repaired Frédéric Dumesnil 1752 φ



J.49.1491 ~cop., 1880. Lit.: L&R, s.no. 60, n.r.

J.49.1492 ~version, pstl/pchm, 78x62 (Berne, Stuker, 14–21.XI.1955, Lot 1100/1099, with pendant; PC, Saint-Sulpice, Suisse). Lit.: L&R, s.no. 60, n.r.; R&L p. 309, fig. 177 φβ



J.49.1493 ~version, pstl, 71.4x64.2 (Graf Janos Pálffy, Königsheiden bei Pressburg; inv. B:27-1340, 1279, 73, est. 1500 koruny). Lit.: Peregriny 1909, no. 219 n.r., as autograph

J.49.1494 ~version, pstl (Sir Thomas Robinson, Lord Grantham). Lit.: L&R, s.no. 60, n.r.

J.49.1495 ~version, apparently reversed, but ?photographic error, pstl/pchm, 79x64 (Bratislava, Slovak National Gallery, K 106) Φβ



Photo courtesy Slovak National Gallery, Bratislava

J.49.1498 ~variant, without crown, pstl, 66x53 (Erzherzogin Rudolf (1858–1889), Schloß Mayerling; his widow Stephanie; Austrian PC; Zurich, Koller, 3.VI.1983, Lot 5042 repr., with pendant, b/i; London, Sotheby's, 4.IV.1984, Lot 184a repr., with pendant, est. £8–12,000). Exh.: Vienna 2017a, no. II.10 repr. Lit.: R&L, p. 308, fig. 175 Φβ



Photo courtesy Sotheby's

J.49.1501 ~version, pstl/pchm, 65x51 (London, Sotheby's, 20.X.1982, Lot 74 repr., with pendant; London, 30.X.1985, Lot 138, as studio, with pendant). Lit.: R&L p. 311 n.r. Φβ



Photo courtesy Sotheby's

J.49.1504 ~cop., pstl/ppr, 67x54 (South German aristocratic PC; Vienna, Dorotheum, 12.XII.2006, Lot 222 repr., workshop of Liotard, est. €4–7000, b/i; pendant, Lot 221). Lit.: R&L p. 311 n.r. φκ



J.49.1506 ~[?pastiche], à dr., les deux mains appuyées sur le sceptre, sans couronne, pstl/pchm, 82x64.5, 1743–45 (Dame de la cour de Liechtenstein? Lodron, Vienna, 1980, with pendant J.49.2046; Köln, Sotheby's, 11.X.2023, Lot 30 repr., with pendant, circle of Liotard, different hand, est. €15–25,000). Lit.: R&L p. 314 n.r. φτ

J.49.1507 FRANZ I. STEPHAN, pstl, 62.1x50 (Liotard; liste d'Angiviller 1785, no. 59). Lit.: Loche 1980, p. 198; R&L 113 n.r.

J.49.1508 FRANZ I. STEPHAN, with mantle and collar of Toison d'or, ?pstl/pchm, pendant to R&L 108 (known only through grav.). Lit.: R&L 108a n.r.

~grav. J. C. von Reinsperger 1744. Lit.: R&L 110, figs. 160, 169

~grav. Petit

J.49.1511 FRANZ I. STEPHAN, pstl, 72x58, 1745 (Braunschweig, Herzog Anton Ulrich-Museum, inv. GG 678. Schloß Salzdahlum 1776; transferred 1816). Exh.: Braunschweig 1975, no. 25 repr. Lit.: Merz 1979, p. 142; Vienna 1980, fig. 146.4.II.12; L&R 62 repr. clr pl. XII; Jacoby 1987, fig. 2; de Herdt 2003 repr.; R&L 115, fig. 191 φ



J.49.1513 ~version, pstl (Vienna, KHM). Lit.: Roethlisberger 2014, p. 190 n.r., ?Liotard ou Kobler

~cop., pnt., 31.5x27.1 (Fredensborg, inv. KMST429. Copenhagen, SMK, dep.). Lit.: L&R, s.no. 61 n.r.; R&L p. 312 n.r.

~cop., pnt., 72x58 (Tilanus, Amsterdam, 23.X.1934, Lot 1035, D/f100; Zwaal, négociant). Lit.: L&R, s.no. 61 n.r.; R&L p. 313 n.r.

J.49.1516 ~cop., robe blanche à fleurs, variantes dans le visage, pstl/ppr, 66x56 (Danish PC). Lit.: R&L p. 313 n.r.

~cop., min./ivory (Royal Collection). Lit.: Walker 1992, no. 732 repr.

J.49.1518 FRANZ I. STEPHAN, pstl/pchm, 66x56 (Slavkov u Brna, Zámek Slavkov–Austerlitz, inv. 135/SL35. Joseph II.; Wenzel Anton von Kaunitz-Rietberg; desc.). Lit.: R&L s.no. 112; pp. 303, 311, fig. 186, ~Meytens pnt. (Vienna, Österreichische Barockgalerie) φ



J.49.152 FRANZ I. STEPHAN, pstl, 62.8x47.1, 1744–45 (Georges Guillaume Bögner; vente p.m., Frankfurt, 28.IX.1778, Lot 238 with pendant, aux trois couronnes; lost). Lit.: L&R 67 n.r.; R&L p. 309 n.r.

J.49.1521 FRANZ I. STEPHAN, pstl/, 111.5x79.5, 1762 (Vienna, Albertina, inv. 35465. Le sujet; legs: Albert Kasimir Herzog von Sachsen-Teschen & Marie Christine; Vienna 1919; Erzherzog Friedrich, Magyarovar; acqu. Böhler, Luzern, 1931; Oskar Reinhart, Winterthur; Bern, Kornfeld & Klipstein, 14.VI.1967, Lot 210 repr., with pendant, Swf23,000). Exh.: Vienna 1968, no. 52/53; Vienna 1969, no. 26/27; Vienna 1980, no. 21,02; fig. 147.6. Lit.: L&R 251 repr.; Haberstatter 2002, p. 154 repr.; R&L 391, fig. 550; Liotard 2018, p. 26 repr. φ



~pendant, Maria Theresia, L&R 250

J.49.1524 ~variant, pstl, 54.5x42 (Rome, Christie's, 8.IV.1991, Lot 6 with pendant, atelier). Lit.: R&L p. 540 n.r.

J.49.1525 FRANZ I. STEPHAN, pstl/pchm, 83.5x66.5, 1762 (Vienna, Hofburg, inv.SB 2253, GG-8596). Lit.: Vienna 1980, fig. 147.8; L&R 252 repr.; R&L 394, fig. 566 φ



J.49.1527 ~dessin, 26.5x22.5 (Bucher, antiquaire à Saint-Gall, 1962. Benjamin Peronnet, cat. 2024, no. 10 repr.). Lit.: R&L p. 543, fig. 554
~grav. J. Schmutzer, 1769. Lit.: R&L p. 543, fig. 555

J.49.1529 ~cop., modifications, pstl, 92x72 (Schönbrunn). Lit.: R&L p. 544, fig. 556 φκ



J.49.1531 ~cop., with Maria Theresia Orden, pstl/ppr, 55x45 (Vienna, Dorotheum, 16.VI.2009, Lot 130 repr., as follower of Liotard, with pendant Maria Theresia, a/r Ducreux, est. €2–3000) φκ



J.49.1533 FRANZ I. STEPHAN, pstl, 65x52 (pdesc.: 8. Fürst von Thurn und Taxis, ∞ 1890 great-great-granddaughter of Maria Theresia] Fürst von Thurn u. Taxis, Castello di Duino; Duino, Beaussant Lefèvre, 11–14.VI.1997, Lot 305 repr., as of Charles Alexandre, duc de Lorraine, bottega di Liotard, est. It£15–24,000). Lit.: R&L, p. 303, fig. 202 φβ



J.49.1536 FRANZ I. STEPHAN

J.49.1537 ~cop., pstl/ppr, 59x49 (Salzburg, Dorotheum, 18.XI.2008, Lot 32 n.r., with pendant, follower of Liotard, est. €1200–1400)

J.49.1538 FREDERICK, Prince of Wales (1707–1751), pstl/pchm, 68x55, c.1754–55 (Royal Collection, Windsor, RCIN 400893. Buckingham House 1783). Lit.: Walpole 1928, p. 79; Trivas 1936b, pl. IB repr.; Millar 1963, no. 579 repr.; L&R 175 repr.; Rorschach 1989, p. 53, no. 30 n.r.; R&L 248, fig. 370. Source of this posthumous image not identified but dated c.1740 φ



~C. Dixon, min., c.1748 (Royal Collection RCIN 420177). Lit.: Walker 1992, no. 214 repr.

~cop., pnt., attr. Reynolds. Lit.: Mannings 2000, no. 689, fig. 453; R&L p. 434, ??Reynolds

~cop., David Lüders (c.1710–1759), pnt., 77x63.8, sd *verso* “Luders fecit” (Royal Collection RCIN 404609). Lit.: Liotard 2015a, fig. 47, as source [??]

~cop., attr. Clara Leigh, min. (Royal Collection). Lit.: Walker 1992, no. 247 repr.; R&L pp. 433f n.r.

J.49.1544 Prince FREDERICK William (1750–1765), pstl/pchm, 40x31, 1754 (Royal Collection, Windsor, RCIN 400898). Lit.: Trivas 1936b, pl. IIC repr.; Millar 1963, no. 587 repr.; L&R 183; Scott 1985, fig. 2; R&L 256, fig. 379; London 2023a, fig. 5.14 φ



J.49.1546 Mrs James FREMEAUX, née Margaret Cooke (1720–1801), pstl/ppr, 50.6x38.2, 1738 (Geneva, mAHI, inv. D 1997-14. Desc. sitter's granddaughter, Mrs Thomas Reeve Thornton, née Susannah Fremieux (1776–1846); desc.: Col. T. A. Thornton, Brockhall, Flore, Northamptonshire; New York, Sotheby's, 29.I.1997, Lot 79 repr., est. \$150–180,000, b/i; London, Sotheby's, 17.X.1997, Lot 283 repr., est. £80–100,000, £98,000; acqu.). Exh.: Liotard 2002a, p. 59 repr. Lit.: John Cornforth, *Country life*, 26.XI.1964, fig. 9; L&R 31 repr.; Liotard 2006, p. 57 repr.; R&L 56, fig. 54; Liotard 2015a, fig. 21 φσ



Photo courtesy Sotheby's

~dessin, 20.5x14 (Louvre RF 13831). Lit.: R&L fig. 59

~dessin, 20x12.6 (T...; Paris, 13.XII.1897, H60). Lit.: R&L fig. 60

J.49.1551 Elisabeth FRIEDRIKE Sophie Herzogin von Württemberg, née Prinzessin von Brandenburg-Bayreuth-Culmbach (1732–1780), pstl/pchm, incomplete, 49x38, 1745–46 (Bayreuth, Neues Schloß, inv. BayNS G 90. Friedrich Samuel Graf von Montmartin (1712–1778), Premierminister und Geheimrathspräsident, Württemberg, seal *verso*; German PC; art market 1961; Günther Scharnowski, Munich; acqu. 1971). Exh.: Bayreuth 1998, no. 8, repr. I, p. 55, fig. 54. Lit.: Scharnowski 1966; L&R 86 repr. clr pl. XVIII; R&L 143, fig. 242 [pattr.] φα



~v. pendant, Wilhelmine, Markgräfin von Brandenburg-Bayreuth, L&R 85

J.49.1554 FRIEDRICH II. von Preußen (London, 21.VI.1833, Lot 295 as by Liotard). Lit.: R&L R10 n.r. [in the absence of a photograph it is impossible to tell if the sitter or the attribution is wrong]

J.49.1555 FRIEDRICH Erbprinz von Sachsen-Gotha-Altenburg (1735–1756), pstl/pchm, 40x31, sd *verso* “Liotard à Genève 1746” (Gotha, Schloß Friedenstein, SG 118). Exh.: Gotha 1908, no. 16. Lit.: Dussieux 1878, p. 258, as of Ernst II. Ludwig von Sachsen-Gotha; Humbert, Revilliod & Tilanus 1897, no. 18 n.r.; L&R 94 repr.; R&L 144, fig. 243 φ



J.49.1557 ~repl., pstl/pchm, 40x32, s 1746 (Royal Collection RCIN 451612. Liotard; Augusta, Princess of Wales). Lit.: Cat. 1922, no. 564, as of Edward, Duke of York; L&R 95 repr.; R&L 145, fig. 244 φβ



Comte FRIESE, assise, tenant une plume (Arthur Sambon; Paris, Georges Petit, 25–28.V.1914, Lot 218 repr.) [v. Roslin]

J.49.156 Philippe GAILLARD DE PÉCHANDIER (1723–1780), négociant à Lyon, pstl/ppr, 10.5x8.5, 1770 (desc.; PC). Lit.: R&L 451, fig. 669 φ



~dessin (desc.; PC). Lit.: R&L p. 594, fig. 668

J.49.1563 David GARRICK (1717–1779), actor, pstl/ppr, 59x48, Paris, 1751 (Chatsworth. Don: ?Lady Burlington; seen Walpole, Chiswick House, 1760, “Mr & Mrs Garrick, by Liotard, Do [in crayons]”; desc.). Exh.: London 1891, no. 296, as by Miss Read; Birmingham 1959, no. 186; Liotard 2015a, no. 33 repr. Lit.: Walpole 1928, p. 23; Manners 1933, pl. VI; Highfill & al., VI, 1978, p. 84, no. 28; L&R 136 repr. clr pl. XXX; Bath 2003, p. 37f n.r.; Ingamells 2004, p. 186 repr.; R&L 199, fig. 332; Kenny 2013, p. 149, pl. 9; Laing 2016, fig. 83, preplica; Belsey 2019, p. 370 n.r., “the so-called Liotard... appears to be an image derived from Wilson’s portrait” [NPG 6249, c.1755, after Liotard] φσ



~grav. James MacArdell p.1751. Lit.: Heineken 1778, “dans une croisée”; Highfill & al., VI, 1978, p. 84, no. 28b; R&L p. 408, fig. 336

~cop., black, red chlk, 29.2x23.6 (Washington, Folger Shakespeare Library, inv. Hamnet ID 308497. George Daniel (1789–1864); acqu. .VII.1864 Angela Georgina, Lady Burdett-Coutts; London, Sotheby’s, 15.V.1922, Lot 245)

~grav. James MacArdell p.1751. Lit.: Heineken 1778, “dans une bordure carrée”

~grav. James MacArdell c.1752, extended and adapted, as Mr Garrick in the character of an auctioneer, as Peter Puff in Foote’s *Taste*. Lit.: Heineken 1778, “dans le role d’un Colporteur”

~grav. C. Barth. Lit.: Highfill & al., VI, 1978, p. 84, no. 28b

~cop., ?min. (Liotard; exh. Paris 1771, no. 99 part). Lit.: R&L p. 409

?David GARRICK, pnt. (olim Burghley). Lit.: Highfill & al., VI, 1978, p. 84, no. 29 [?confusion]

~cop., pnt.84.5x68 ov. (London, Theatre Royal, Drury Lane). Lit.: L&R 307, as Liotard, pstl; Ingamells 2004, p. 186, as a/r Liotard [?attr.; English sch., ?Gainsborough Dupont]; R&L R11 n.r.

J.49.1573 Mrs David GARRICK, née Eva Maria Veigel (1724–1822), dancer, “Mlle Violette”, pstl/ppr, 58x47, c.1754 (Chatsworth. Don: ?Lady Burlington; seen Walpole, Chiswick House, 1760, “Mr & Mrs Garrick, by Liotard, Do [in crayons]”; desc.). Exh.: London 1891, no. 296A, as by Miss Read; Birmingham 1959, no. 187; Liotard 2015a, no. 34 repr.; Liotard 2023, fig. 38. Lit.: Walpole 1928, p. 23; Manners 1933, pl. VII; Fosca 1956, pl. IX; Highfill & al., VI, 1978, no. 7; L&R 137 repr.; Devonshire 2002, p. 190 repr.; Ingamells 2004, p. 190 repr.; R&L 267, fig. 396; Kenny 2013, p. 149, pl. 10; Laing 2016, fig. 84; Baker 2023, fig. 26 φσ



J.49.1575 Mrs David GARRICK, née Eva Maria Veigel, in black silk cloak and hat, pstl (David Garrick, inv. p.m., 1.III.1779, no. 18; his widow; sale p.m., Hampton, Burrell, 21.VIII.1823 & seq., Lot 8). Lit.: [?Laetitia Matilda Hawkins, *Anecdotes*, London, 1822, I, p. 29: “There exists (perhaps little known) a very singular portrait of Mrs Garrick, in the

possession of a lady at Twickenham, in features and the expression of her countenance certainly very strongly resembling what I recollect her to have been about the year 1770; though, if the dress was the fashion of the time, painted long before. Mrs Anne Welch, the intimate friend of Johnson..., thought it probably not by Rosalba, but by Liotard, whose portrait is in the gallery at Strawberry-hill. It is in a dress not much differing from that of a quaker”; R&L 268 n.r.

J.49.1576 =?m/u (source n/k). Lit.: Percy Fitzgerald, *The life of David Garrick*, London, 1868, ii, grav. frontispiece, anon., as of Eva Maria Garrick [new attr., ?] φα



Frau August Gottlieb von GÄRTNER, Gräfin Jepszy (Luzern, Fischer, .VI.1960, Lot 2423 repr.) [v. Rotari]

Gaucher, v. Hérouville; Liotard

J.49.158 GEORGE III (1738–1820) as Prince of Wales, pstl/pchm, 40.6x29.8, 1754 (Royal Collection RCIN 400897. Comm. Augusta, Princess of Wales, 1754). Exh.: London 1982, no. 60; London 2002b, no. 386 repr.; London 2004, no. 1 repr.; London 2014b, no. 242; Liotard 2015a, no. 29 repr.; New Haven 2017, no. 9.06 repr. [London only]. Lit.: Trivas 1936b, pl. IIA repr.; Millar 1963, no. 581, pl. 215; Plumb & Weldon 1977, p. 193 repr.; L&R 177 repr.; Russell 1987, n.r.; Ingamells 2004, p. 195 n.r.; Roberts 2008, p. 246 repr.; R&L 250, fig. 372; Andrew Roberts, *George III*, 2021, pl. 1 φσ



J.49.1582 ~repl. (Herzog von Braunschweig). Lit.: Millar 1963, n.r.; R&L 435, not located

J.49.1583 =?pstl (PC 2015) φ

~repl., enamel, 5x4 ov., sd 1754 (Queen of The Netherlands). Lit.: Millar 1963; L&R 177 repr.; R&L 258, fig. 385

~repl., enamel (Royal Collection). Lit.: R&L 259, fig. 387

~repl., enamel (English PC). Lit.: R&L 260, fig. 388

J.49.1588 ~cop., pstl (Wykeham Abbey). Lit.: Millar 1963; Ingamells 2004, p. 195 n.r.

J.49.1589 ~cop., m/u, 58.5x48 ov. (London, Christie’s, 14.II.1964, Lot 142, Éc. fr., unknown subject). Lit.: R&L p. 435 n.r.

J.49.159 ~cop., m/u, 69x55 ov. (New York, Sotheby’s, 28.XI.1978, Lot 83, Éc. fr., unknown subject). Lit.: R&L p. 435 n.r.

~model for Reynolds pnt., 1759 (Royal Collection). Lit.: Mannings 2000, no. 715; R&L p. 435, fig. 384

GEORGE III as Prince of Wales (London, Sotheby's, 10.XII.1968, Lot 81 repr., as Liotard) [v. English sch.]

J.49.1593 Mme Paul GIRARDOT DE VERMENOUX, née Anne-Germaine Larrivée (1739–1783), pstl/ppr, 76x60.5, c.1760 (Aimé Martinet, Geneva, c.1960; desc.; London, Sotheby's, 8.VII.2004, Lot 133 repr., est. £150–200,000, b/i; PC). Lit.: R&L 366, fig. 519 Φσ



Photo courtesy Sotheby's

J.49.1596 ~cop., pstl, 75x60.5 (olim attr. Liotard, inconnue; reattr. Lenoir by Louis Gielly, Geneva, 1935; [=?Paris, Drouot Salle 10, 23.II.1956, Lot 32 n.r., as Lenoir, inconnue;] Geneva PC 2004). Lit.: R&L p. 522, fig. 527 Φκ



J.49.1598 Mme Paul GIRARDOT DE VERMENOUX, née Anne-Germaine Larrivée, pstl/pchm, 61x51.5, c.1764 (Geneva, mA, inv. 1984-107. Comm. Paul Moulton, Geneva; desc/don: Ernest Odier Martin du Pan (1883–1966), Geneva; desc.; acqu. 1984). Exh.: Lausanne 1921, no. 313; Geneva 1925; Geneva 1936; Paris 1948, no. 23; Geneva 1948, no. 39; Liotard 2002a, p. 99 repr. Lit.: Francis de Crue, *L'Ami de Rousseau et des Necker, Paul Moulton à Paris en 1778*, 1926, p. 18 n.r.; Fosca 1956, pl. XII; L&R 264 repr.; Cranston 1997, p. 22 n.r.; Buysens 1988, no. 197; Liotard 2006, p. 101 repr.; R&L 426, fig. 617; Liotard 2015a, fig. 14 φ



J.49.16 Mme Paul GIRARDOT DE VERMENOUX, née Anne-Germaine Larrivée, remerciant Apollon de sa guérison, pstl/pchm, 120x95, sd ↓ “J. E. Liotard/pinxit 1764”, inscr. on both socle and pedestal “NAMQ[UE] ERIT ILLE MIHI

SEMP[ER] DEUS” [Virgil, *Eclogue* i:7] (Karlsruhe, Staatliche Kunsthalle, inv. 2984. Le sujet; don: Théodore Tronchin; seen Zinzendorf, 9.X.1764; Henri Tronchin 1886; desc. famille Tronchin, 1950; André Givaudan, Geneva, 1950–78; PC; Derek Johns; acqu. 2018, €1.4 million). Exh.: Liotard 1886, no. 42; Liotard 1925; Liotard 2015a, no. 72 repr. [London only]; Lausanne 2018, no. 19, repr. p. 41. Lit.: Humbert, Revilliod & Tilanus 1897, no. 84 n.r.; Cronsier 1908, p. 52; Geneva 1974, p. 196 (iconographie), no. 22 repr.; L&R 263 repr. clr pl. I; Cranston 1997, p. 22 n.r.; R&L 427, fig. 619; *Antiques trade gazette*, 31.III.2018, p. 4 φσ



J.49.1602 William Henry, Duke of GLOUCESTER (1743–1805), in a pale blue-green coat over a red waistcoat, pstl/pchm, 40x31, 1754 (Royal Collection RCIN 400894). Lit.: Millar 1963, no. 584 repr.; L&R 180 repr.; R&L 253, fig. 375 φ



J.49.1604 Isaac GOSSET (1713–1799), sculptor and wax modeller, pstl, 75.5x62.5 ov., c.1772 (desc.: PC 1985). Exh.: London 1985b, no. 313 repr. Lit.: Mary H. Gosset, “A family of modellers in wax”, *Proceedings of the Huguenot Society*, III, 1888–91, p. 547; E. J. Pyke, *A biographical dictionary of wax modellers*, 1973, pp. 56–59; Tessa Murdoch, “The Gosset family”, *Country life*, CLXXVII, p. 1282f, fig. 1, attr.; Roethlisberger 2014, p. 187 n.r. φ



J.49.1606 John Manners, Marquess of GRANBY (1721–1770), pstl/ppr, 58x44.7, sd ← “Marquis de Granby/peint à Constantinople par/Liotard 1740” (Belvoir Castle, Duke of Rutland). Lit.: Kerslake 1977, II, pl. 277; L&R 46 repr.; R&L 81, fig. 100 Φ



Photo courtesy owner

=?John, Lord Manners, crayons, by Rosalba (Belvoir Castle 1792, Musgrave's lists)

~dessin, black chlk, sanguine, pstl, 18.5x14.5, sd 1740 (Belvoir Castle, Duke of Rutland). Lit.: L&R, s.no. 46, n.r.; R&L, s.no. 81, figs. 112, 113 ~enamel (Belvoir Castle 1792, Musgrave's lists). Lit.: John Nichols, *History and antiquities of the county of Leicester*, 1792; R&L 82, fig. 114

Lady Robinson, née Frances Worsley, later Lady GRANTHAM (Zurich, Schuler, 17.III.2000, Lot 3218 repr.; Zurich, Schuler, 7.XI.2000, Lot 1597 repr.). Lit.: L&R 56 n.r. [v. English sch.]

J.49.1613 Pierre-Nicolas GRASSOT (1722–1800), docteur en médecine de l'Académie royale de chirurgie de Paris, chirurgien à Lyon, pstl/pchm, ?1770. Lit.: Michel N. Benisovich, “Further notes on Wertmüller...”, *Art quarterly*, XXVI, 1963, p. 25, n.34, ambiguously referring to Liotard pastel of father or son; L&R 374 n.r.; R&L 454 n.r., citing letter of 17.VI.1777 from Grassot to Liotard reporting damage to pastel

J.49.1614 Jean-Antoine GUAINIER-GAUTIER (1716–1801), syndic, pstl/ppr, 64.5x53, 1758–65 (Geneva, mA, inv. 1941-10. Desc. famille Claparède; acqu. 1941). Exh.: Liotard 1886, no. 8; Liotard 1925, Geneva 1936, no. 1; Zurich 1939, no. 461; Geneva 1943, no. 852; Geneva 1948, no. 43; Liotard 1978, no. 15. Lit.: Humbert, Revilliod & Tilanus 1897, no. 67 n.r.; L&R 231 repr.; Buysens 1988, no. 190; Liotard 2006, p. 95 repr.; R&L 362, fig. 513 φσ

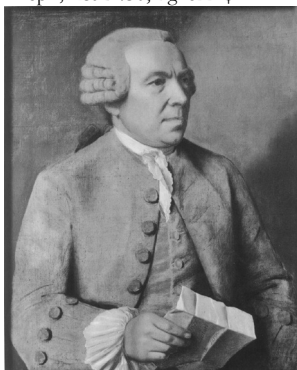


J.49.1616 Countess of GUILFORD, née Katherine Furnese, Dowager Countess of Rockingham, Countess (3rd wife of Francis, 1st Earl) of Guilford (1715–1766), pstl/pchm, 60x48.5, sd *verso* “1754 Liotard P.” (Bern, Kunstmuseum, Staat Bern, inv. G.1232. Comm. 25 gns; desc. North family, Wroxton Abbey; acqu. V. H. Langton Douglas; acqu. 1933, SwFr1800). Exh.: Bern 1936, no. 78; Paris 1948d, no. 22; Biel 1953, no. 43; Bern 1970; Liotard 2015a, no. 37 repr. [London only]. Lit.: Trivas 1937; L&R 163 repr.; Kuthy 1983, no. 179, repr. p. 67; Huber 1985, repr. p. 27; Liotard 1992, repr. p. 21; R&L 278, fig. 411 φσ



Photo courtesy Kunstmuseum, Bern

J.49.1619 Jean-Abraham HALDIMAND (1716–1786), banquier à Turin, pstl/soie, 65x52, sd ↓ “1766/Par Liotard/a Turin” (S. Lacroix-Grenier, Geneva, c.1920; PC). Lit.: L&R 268 repr.; R&L 430, fig. 622 φ



J.49.16192 ~cop., pstl/ppr, 60x50, 1783 (Fondation des Suisses dans le Monde; Geneva, Piguët, 21.IX.2022, Lot 4128 repr., as anon., ?Frédéric Haldimand, est. SwFr600–800) [new attr., identification] φικν



J.49.16195 ?Sir James HALL, 4th Bt of Dunglass (1761–1832), geologist and chemist, m/u (lost; existence inferred from unsigned inscription on a copy of Liotard’s small engraved self-portrait (San Francisco, FAM, Achenbach Foundation, inv. 1998.7), “This print was sent me by M. Liotard 1785 – he drew my likeness at 82!”

J.49.162 Philip Yorke, Lord Royston, later 2nd Earl of HARDWICKE (1720–1790), m/u [pminiature], (comm. Paris, 1749). Lit.: correspondence with wife, Bedfordshire and Luton Archives, L30/9/113/26,28,30

J.49.1621 ?William Stanhope, Viscount Petersham, 2nd Earl of HARRINGTON (1719–1779), general, pstl/pchm, 50x40, inscr. *verso* “herington” (E. Bucher 1985). Lit.: R&L R68, fig. 822, par Liotard?; Jeffares 2009 φ



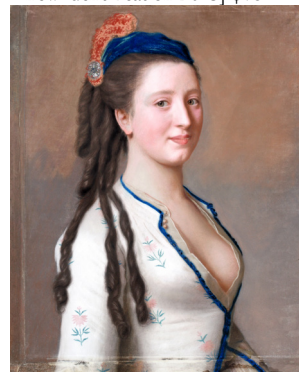
J.49.1623 Marchioness of HARTINGTON, née Lady Charlotte Elizabeth Boyle, Baroness Clifford *s.j.* (1731–1754), en pèlerine bleue, pstl/prepared ppr, 58x48, 1754 (Chatsworth). Exh.: Liotard 2015a, no. 38 repr., as on ppr; Liotard 2023, fig. 37. Lit.: L&R 173 repr. clr pl. XXXV, inconnue; R&L 285, fig. 418; Baker 2023, fig. 25 φσ



J.49.1625 ?Mrs HARTLEY, née Charlotte Champion, in a duck-egg blue cape and black bonnet, pstl/pchm, 56.5x44 (London, Phillips, 11.XII.1991, Lot 147 repr., est. £120–180,000, b/i; London, Phillips, 7.VII.1992, Lot 25 repr., £25,000; PC 2015). Lit.: R&L 283, fig. 416 φδσ



J.49.1627 Lady HAWKE, née [Catharine Brooke (1720–1756)], wife of Admiral Sir Edward Hawke, pstl/pchm, 57x46, [1753] (John Rhodes, Potternewton House, Leeds, 1894. PC 2013). Lit.: Williamson 1894, p. 79, 160 n.r., as of Lady Hawke, née Cassandra Turner (1746–1813), by Russell; Roethlisberger 2014; fig. 1, “superbe”; Jeffares 2015b, fig. 9 [new attr.; new identification 2013] φνσ



Zoomify

~version, v. Countess of Northampton

J.49.163 Frederica Maria van Reede-Athlone à 7 ans, future comtesse van HEIDEN (1748–1807), pstl/pchm, 57.2x47/53.5x43, sd ↗ “peint par/J E Liotard/1755 & 1756” (Los Angeles, J. Paul Getty Museum, inv. 83.PC.273. Comm. baronne van Reede; Jhr P. A. G. de Milly van Heiden Reinestein, Warnsveld, 1934; desc.; [London, Christie’s, 1983]; Samuel Nijstad Oude Kunst BV; acqu. 1983). Exh.: Amsterdam 1934, no. 27 repr.; Liotard 1985, no. 41 repr.; Liotard 2015b; Los Angeles 2022. Lit.: Moes 1897–1905, II, no. 6272; Humbert, Revilliod & Tilanus 1897, no. 51; Fosca 1928, p. 157; Trivas 1936a, no. 192; Staring 1947, pl. 10; Staring 1948, pl. XLVI; Johanna V. Chr. Bakker-Hefting, *Kinderportretten*, Rotterdam, 1969, no. 223 repr.; L&R 191 repr.; *The J. Paul Getty Museum journal*, XII, 1984, p. 315; Fredericksen 1985, fig. 104; Liotard 1985, pp. 37, 121ff; Roethlisberger 1985, p. 109; *Tableau*, 1985/6, repr. p. 78; Houston 1986, p. 60, *s.no.* 14; Reinewald 1987, p. 65f; *Tableau*, IX/4, .II.1987, p. 65 repr.; Fredericksen 1988, no. 47; Roethlisberger 1990, p. 98; Fredericksen & al. 1997, no. 61 repr.; de Herdt 2003 repr.; West 2004, p. 61, repr. clr; R&L 319, fig. 461; Oresko 2010, fig. 3; Burns & Saunier 2014, p. 102 repr.; Liotard 2015a, fig. 25; Jeffares 2015f; Baker 2023, fig. 33 φσ



Zoomify

Photo © J. Paul Getty Museum, Los Angeles

J.49.1633 ~cop. Freule van Lockhorst, pstl/pchm, 60x43 (Van Aldenburg Bentinck, Kasteel Amerongen). Exh.: Liotard 1985, no. 41a repr. Lit.: R&L pp. 479f n.r.

Heiden Reinestein, v. Jaussaud

J.49.1635 Madame HENRIETTE de France (1727–1752), en robe de cour drapée d'un manteau fleurdélié, pstl, gch./pchm, 62.5x48.5, 1749, ?Salon de Saint-Luc 1752, no. 60 (Stupinigi. *Olim* Castello di Colorno). Exh.: Stupinigi 1979, no. 127; Liotard 2015a, no. 53 repr., as on ppr [London only]. Lit.: duc de Luyne, x.1749; L&R 108 repr.; Hugues 2004, p. 69 repr.; R&L 170, fig. 281 φσ



J.49.1637 ~repl., pstl, ?1752–49. Lit.: R&L p. 379 n.r.

~cop., pnt., 60.2x50.1 (London, Phillips, 13.XII.1999, Lot 69. Shrewsbury, Halls, 21.III.2018, Lot 336; PC; Paris, Artcurial, 15.II.2022, Lot 6 repr.). Exh.: Versailles 2019, no. 6 repr.

~version, min., Carnet royal, right leaf, upper right. Lit.: Herdt 2003, p. 90 repr.; Hugues 2004, p. 70 n.r.; R&L 185, fig. 310

~cop., pnt., 51x44 ov. (Florence, Galleria Palatina, inv. 262–65, with dauphine and Mmes Adélaïde, Sophie) Lit.: R&L p. 379, fig. 300

~cop., pnt., 58x48.5 (Zurich, Koller, 19.IX.1997, Lot 85 repr., attr; PC). Lit.: R&L p. 379, fig. 297

~grav. F.-X. Vispré, *Mercur de France*, .vii.1750, p. 175. Lit.: R&L p. 379, fig. 292

~cop. [Louis-Michel] Le Brun, min., rect. (comm. famille royale, 300 livres, 21.IV.1751). Lit.: Vaillat 1912, p. 184, as of “Madame”; R&L p. 380 n.r.

~repl., min. Lit.: R&L p. 380 n.r.

J.49.1644 René HÉRAULT, sgr de Fontaine-l'Abbé et de Vaucresson (1691–1740), lieutenant général de police de Paris, m/u, c.1731. Lit.: L&R 6; R&L 12 n.r. [original thought to be pnt. because of the date but pstl possible]

~grav. Liotard 1731 (FD 1360). Lit.: L&R 6¹; Liotard 2002b, p. 2; R&L 13, fig. 12

~grav. Pierre Dupin; Johann Martin Bernigeroth

J.49.1647 La comtesse d'HÉROUVILLE, née Louise Gaucher, dite Lolotte (1724–1765), actrice, maîtresse du 2nd Earl of Albemarle, en turque, m/u (Lord Harrington by 1771; not in his sale p.m., Christie's, 30–31.III.1781; acqu. Earl of Sefton a.1782). Lit.: Walpole 1762, IV, p. 91 not described; Walpole 1782, IV, p. 196; Walpole 1876, III, p. 28; L&R 373 n.r.; R&L 233 n.r.

=?J.49.13 *Countess of Coventry*, q.v.

J.49.1649 Francis Seymour, 2nd Baron Conway, 1st Marquess of HERTFORD (1718–1794), lord lieutenant of Ireland, m/u (Ragley Hall, 1797, Musgrave's lists). Lit.: R&L 291 n.r.

~cop. John Astley, pnt. (Horace Walpole, 4th Earl of Orford; desc.: Earl Waldegrave; Strawberry Hill, George Robins, 17.V.1842, Lot 16 n.r.). Lit.: Walpole 1784, p. 444 n.r.; R&L s.no. 291, fig. 383

Hervey, v. Bristol

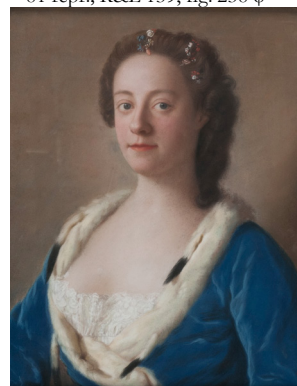
J.49.1651 La baronne de HOCEPIED, née Marie Dunant (1726–1801), Mrs Samuel Crawley, pstl/ppr, 36x61, c.1742 (desc.: Rev. ? Crawley, archdeacon of Monmouth, Bryngwyn; PC 2018) φασ



J.49.1652 Robert d'Arcy or Darcy, 4th Earl of HOLDERNESSE (1718–1778), British ambassador in Venice 1744–46, pstl/pchm, 41x30.5, 1745; & pendant: J.49.1653 Countess, née Maria Doublet van Groenestein (1720–1801), pstl/pchm, 41x30.5, 1745 (Berlin SMB KdZ 26352/26353. Desc.: sitters' daughter, Lady Amelia Darcy, Baroness Conyers *sj.*, Lady Carmarthen; her husband, Duke of Leeds; their daughter, Lady Mary Osborne, Countess of Chichester; their son John Thomas Pelham (1811–1894), Bishop of Norwich; his son Henry Francis Pelham (1846–1907), president of Trinity College, Oxford; his son Sir Edward Henry Pelham (1876–1949); his widow, Lady Pelham, née Irene Lubbock (1886–1961), London, daughter of Lord Avebury; Mrs Scharf, London; Herbert Bier, dealer, London; acqu. 1972). Exh.: Berlin 1973, no. 167/168. Lit.: L&R 79/80 repr. clr pl. XIV/XV; Grijzenhout 1985a, no. ?11, cop., Dückers 1994, VI.21 n.r./repr.; R&L 137/138, fig. 236/237; Salomon 2023, fig. 17/18 φσ



J.49.1656 ~repl. (*Countess*, with changes to hair), pstl/pchm, 41x32 (The Hague, Rijksdienst voor het Culturele Erfgoed, inv. C540. *Olim* The Hague, Gemeentemuseum, B262. François Fagel, grand-oncle du sujet, The Hague; desc.; legs 1957). Exh.: Liotard 1985, no. 11 repr.; Amsterdam 2018, h.c. Lit.: L&R 81 repr.; R&L 139, fig. 238 φ



J.49.1658 Henry Fox, 1st Baron HOLLAND (1705–1774), pstl/pchm, 70x52, 1754 (Horace Walpole, 4th Earl of Orford; desc.: Earl Waldgrave; [Strawberry Hill], George Robins, 25.IV.1842 & seq., 18.V.1842 [2nd ed. only], Lot 74* n.r., 4½ gns; Colnaghi; desc.; Lord Lilford c.1960; PC 2004). Lit.: Walpole 1784, p. 464 n.r.; L&R 162, as lost; R&L 273, fig. 401 φσ



Photo courtesy owner

~grav. James MacArdell. Lit.: L&R 162' repr.; R&L p. 445, fig. 404

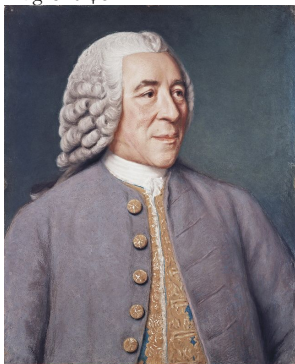
~grav. anon., for S. Harding, 1798. Lit.: Manners 1933, pl. VIII; R&L p. 445, fig. 405

~cop, with changes, pnt. (desc.: J. K. Wingfield Digby). Lit.: R&L p. 446, fig. 403

J.49.1664 Lady HOLLAND, née Lady Georgiana Caroline Lennox (1723–1774), pstl, 49.5x25.4 [sic] (Duke of Leinster; inv. 1885, as G. Caroline, Lady Holland, d.1774, by Rosalba; Dublin, Bennett & Son, 2–4.XII.1925, Lot 431 n.r., as Lady Georgina Holland, by Liotard). Lit.: Drumm 2003, pp. 221f n.r.

J.49.1665 Carl Fredrik, baron von HÖPKEN (1713–1778), envoyé de Suède à Constantinople, jouant de la basse de viole, dessin [not pstl], c.1740 (Liotard, exh. Paris 1771, dessins, no. 9). Lit.: L&R s.no. 80 n.r.

J.49.1667 Jean-Jacques HORNGACHER, sgr de Plonjon (1695–1778), banquier à Amsterdam, pstl/pchm, 58.5x48, 1757–60 (Geneva, MAH, inv. 1995-1. Desc.; Zurich, Christie's, 10.IV.1995, Lot 3 repr., est. SwFr160–200,000, SwFr120,000; acqu.). Exh.: Liotard 1886, no. 10; Liotard 1925; Liotard 2002a, p. 94 repr. Lit.: Humbert, Revilliod & Tilanus 1897, no.52 n.r.; L&R 238 repr.; *Chronique des arts*, 1996, no. 381 repr.; Liotard 2006, p. 94 repr.; R&L 359, fig. 510 φσ



J.49.1669 Henry Hyde, Viscount Cornbury, later Baron HYDE (1710–1753), pstl, a.1750 (Lord Royston, St James's Square, London, 1761). Lit.: Walpole 1928, p. 39; L&R 371 n.r.; Jeffares 2006, p. 341, col. A, n.r., s.n. Cornbury; R&L 304 n.r.

J.49.167 Miss Mary Anne IBBETSON, en costume suédois, pstl, 24x20 (London, Christie's, 10.IV.1911, Lot 59, £4/5/-; Leggatt. Sir Edward Coates; London, Sotheby's, 22.VI.1922, Lot 1 n.r., £30; Lee; London, Sotheby's, 25.VI.1930, £20; Vogel)

J.49.1671 Marie-Louise-Élisabeth de France, Madame INFANTE (1727–1759), pstl, 61x50, 1749, Salon de Saint-Luc 1752, no. 59 (5 versions; 2 appear in Menus Plaisirs accounts,

1752). Lit.: duc de Luynes, .x.1749; Loche 1980, p. 202, no. 69 n.r.; R&L s.no. 169

J.49.1672 ~repl., pstl, 61x50 (Liotard; seen Zinzendorf, 7.X.1764; 1785 liste d'Angiviller, no. 69). Lit.: Loche 1980, p. 202; R&L p. 378

~version, min., Carnet royal, right leaf, lower right. Lit.: Herdt 2003, p. 90 repr.; Hugues 2004, p. 69 n.r.; R&L 185, fig. 310, *olim* ??Madame Louise

J.49.1674 ~?repl., ?pstl, 1754 (comm. cardinal de Tencin, Lyon, 80 louis d'or; sent to Parma in 1755 but returned to Liotard for restoration; with Liotard 1759. =?marquise de Grolée 1761; sent to Parma 1762). Lit.: Henri Bédarida, *Parma e la Francia (1748–1789)*, Parma, 1986, p. 493; González-Palacios 1996, p. 381f; Perez 1997, p. 39, n.34; R&L p. 378 n.r.

~?cop. Nonotte, q.v.

J.49.1676 Maria ISABELLA de Bourbon-Parme (1741–1763), ∞ Joseph II., pstl, 59x49, 1749, ?Salon de Saint-Luc 1752, no. 63. Lit.: duc de Luynes, .x.1749; L&R 115 n.r.; R&L 174 n.r.

J.49.1677 ~repl., pstl fixé, 62.3x48.7 (Liotard; seen Zinzendorf, 7.X.1764; liste d'Angiviller 1785, no. 66). Lit.: Loche 1980, p. 201; R&L p. 383 n.r.

~ repl. pnt., 81x65, 1752. Lit.: R&L p. 383 n.r.

J.49.1679 Maria ISABELLA de Bourbon-Parme, m/u, 1762. Lit.: R&L 400 n.r.

J.49.168 =?Dame à Péventail, pstl, 78x60 (Parma, Galleria Nazionale, inv. 2069. Ducal collection; *olim* Milan). Lit.: Schianchi 2000, no. 700, repr. p. 93, *Éc. fr.*, close to Liotard, inconnue; Jeffares 2006, p. 353 n.r., inconnue φ



J.49.1682 ~version, pstl/pchm, 45.5x33.5 (Italian state property) [?cop., ?cf. Isabella] φ



~Meytens pnt., 363x175 (Innsbruck, Hofburg, inv. GG 007838)

~version, pnt., 16x12 (Schönbrunn, inv. GG 7535)

~cop., min. (Vienna, Hofburg, inv. E 20384-B). Lit.: Keil 1999, no. 103

~cop., min. (Vienna, Hofburg, inv. E 20267-B). Lit.: Keil 1999, no. 106, as of Maria Josefa von Bayern

~cop., min. (Vienna, Hofburg, inv. 28237). Lit.: Keil 1977, no. 270, attr. Liotard

J.49.1688 Deux portraits de S.A.R. l'Archiduchesse de Parme [Maria ISABELLA de Bourbon-

Parme], pstl, 48.7x40.6 (prince Charles de Lorraine; inv. p.m., 6.X.1780, no. 24) [new attr., ?; cf. Lion]

J.49.1689 Mlle Jaquet [Louise JACQUET (1722–p.1784), de l'Opéra], chanteuse, pstl/pchm, 1752, Académie de Saint-Luc 1752, no. 70 (le sujet, Aix, 1769, vu par François Tronchin; desc.: PC; Paris, Sotheby's, 21.VI.2012, Lot 57 repr., est. €300–400,000, €1,464,750; US PC; dep.: Los Angeles, Getty Museum, inv. L.2022.29). Exh.: Liotard 2015b; Los Angeles 2022. Lit.: L&R 146 n.r.; R&L 241 n.r.; Jeffares 2009; Roethlisberger 2014, fig. 6; Jeffares 2015f φσ



Zoomify

J.49.1691 JAMES Francis Edward Stuart, "James III" (1688–1766), pstl, 1737 (comm. with two other pastels and min., 54 zecchini; frame and gilding separately invoiced). Lit.: L&R 19 n.r.; R&L 39 n.r.; Corp 2011, p. 285

~repl., min., 1738

~cop. Blanchet, pnt.

J.49.1694 ~cop., m/u (pour le marquis de Villefrance, 50 livres). Lit.: Stuart Wortley 1948

Jaquet, v. Jaquet

J.49.1696 Mme Paul Scipion de JAUSSAUD (∞ 1779), née Dorothea Sophie van Heiden Reinestein (1742–1794), pstl, 60x50, s → "par Liotard/1756" (Assen, Drents Museum. Mme W. R. L. van Andringa de Kempnaer de Milly van Heiden Reinestein, The Hague, 1978; London, Christie's, 13.XII.1984, Lot 113, b/i; London, Sotheby's, 5.VII.1993, Lot 74 repr., b/i; dep.). Exh.: Liotard 1985, no. 48 repr. Lit.: L&R 207 repr., inconnue; R&L 333, fig. 478 φ



Photo courtesy Sotheby's

J.49.1699 Claude-Prosper JOLYOT DE CRÉBILLON (1707–1777), min., 1750–52 (Horace Walpole 1752). Lit.: L&R 131 n.r., as pstl; R&L 228, fig. 363

Erzherzog JOSEPH (Braunschweig, Herzog Anton Ulrich-Museum, inv. GG 679), v. *Éc. fr.*

Erzherzog JOSEPH (*olim* Weimar, SWKK, inv. G67). Lit.: R&L 122, v. a/r Meytens

J.49.1702 Kaiser JOSEPH II. (1741–1790), pstl, 74x58, sd = "J. E. Liotard/1762" (Fürst Karl Johann von Schwarzenberg, Vienna, inv. 476.

Peter von Galvagni (1797–1868), collectionneur, Vienna; Vienna, Künstlerhaus, 25.II.1869, Lot 53, Kr150; Plach. Schwarzenberg, Neuwaldegg, a.1869). Exh.: Vienna 1980, no. 29,01; fig. 147.11. Lit.: L&R 253 repr.; R&L 398, fig. 563 φ



J.49.1704 ~repl., pstl/pchm, 72x56, sd ← “J. E. Liotard/1762” (Jussy, château du Crest [Yves Michel]). Acqu. Vienna. Baron Preben Bille-Brahe-Selby, Steensgaard; Copenhagen, Winke & Magnussen, 20.X.1938, Lot 28, as of Joseph II.; Galerie Nathan; Jacques Gardiol, Geneva. Monaco, Sotheby's, 20.VI.1987, Lot 392. London, Phillips, 11.XII.1991, Lot 284 repr., est. £50–70,000; Geneva PC; acqu. Fondation Martin Bodmer, Geneva, 1998; acqu. a.2023). Lit.: L&R 254 repr.; R&L 399, fig. 564; Étienne Dumont, “Le château du Crest...”, *Le Bilan*, 12.VII.2023, repr.Φ



Photo courtesy Sotheby's

~cop. Pierre-Joseph Lion, pstl, 1766, q.v.

J.49.1708 ~cop., pstl, 83.5x61.2, sd ← “J. E. Liotard/1762” (Phoenix Art Museum, inv. 83.80. US PC 1983; Carl Bimson; don 1983). Lit.: *Chronique des arts*, 1984, no. 181 repr.; R&L pp. 548f, fig. 568 φ



~cop., pnt., 18x14 (Schloß Schönbrunn, with series of 19 Habsburg portraits). Lit.: R&L p. 549 n.r.

J.49.1711 ~cop., pstl, 18x14 [?] (St. Anton, Slovak Republic). Lit.: Angelika Schmitt-Vorster, “*Pro Deo et Populo: Die Porträts Josephs II. (1765 – 1790)*”, thesis, Ludwig-Maximilians-Universität München, 2006 Kat. 9B, p. 274 repr. φ



J.49.1713 JOSEPH II., bust, with order of St Stephen, pstl, 53x41, 1762 (Fürst Karl Johann von Schwarzenberg, Neuwaldegg, Vienna, a.1978). Lit.: L&R 255 n.r.

J.49.1714 JOSEPH II., black, white chlk, pstl/ppr bl., unfinished, 66.5x49, 1778, inscr. verso “Joseph II Empereur des Romains, Roi d’Hongroi et de Bohème, fils aîné de Marie Thérèse et de François 2 en 1776–7. Esquisse d’après nature par J. Et. Liotard” (Rijksmuseum SK-A-1198. Liotard; liste d’Angiviller, s.no.; inv. p.m. 1789, no. 123; Marie-Thérèse Liotard; J.-E. Liotard-Crommelin; Mme Tilanus-Liotard; legs 1885). Exh.: Liotard 2002b, no. 32 repr. Lit.: Humbert, Revilliod & Tilanus 1897, no. 7, repr. p. 31; Thiel 1976; L&R 321 repr.; Vienna 1980, fig. 147.9; Loche 1980, p. 202; R&L 515, fig. 725; Sauvage 2015, fig. 8 Φσ



Photo courtesy Rijksmuseum

~pendant, Maximilian, L&R 322

J.49.1718 ~repl., 1778. Lit.: Vienna 1980, fig. 147.10 φ



~dessin, pierre noire, sanguine (Geneva, mA)H

~grav. Liotard, mezzotint, repr. Liotard 2002b, no. 31

J.49.1722 JOSEPH WENZEL I. Lorenz Fürst von u. zu Liechtenstein 1748 (1696–1772), chevalier de la Toison d’or 1739, pstl, 88x69, 1762 (collection Liechtenstein, Vienna, 1767). Lit.: Vincenzo Fanti, *Descrizione completa di tutto...galleria di pittura...Liechtenstein*, 1767, no. 487 n.r.; L&R 258 n.r.; R&L 413 n.r.

~cop. Domenico Cerasoli, en mosaïque, 86.6x67.7. Lit.: *Description des tableaux...maison de Liechtenstein*, 1780, no. 38

KARL IV. (Philipp) Theodor Herzog von Pfalz-Zweibrücken [v. German sch.]

Karoline Luise, v. Caroline Luise

J.49.1726 Wenzel Anton Fürst von KAUNITZ-Rietberg (1711–1794), chevalier de la Toison d’or, pstl/pchm, 58.4x47, 1762 ([?comm. Maria Theresia 1762; inv. 1768.] Graf Pálffy. Famille Kaunitz; desc.: Graf Ludwig Karolyi; Berne, Stuker, 9.III.1951, Lot 2131, fig. 2; Rolf Trembley, Duillier, Switzerland, 1978; desc.: Jasmin S. Trembley; New York, Christie’s, 29.I.2009, Lot 61 repr., est. \$80–120,000, \$110,500). Lit.: L&R 256=257 repr.; R&L 412, fig. 562; Christopher Andrew, *The secret world*, 2018, fig. 31 φσ



~grav. Pietro Antonio Pazzi, in robes of Toison d’or, 1765. Exh.: Bruxelles 1987, p. 213

~~cop., pnt., 69.5x50.5 (Vienna, Dorotheum, 15.XII.2009, Lot 351. Bruxelles, Vanderkindere, 14.XI.2017, Lot 22 repr., attr. Lampi)

~grav. J. G. Haid, 1774. Lit.: Robbins Landon 1989, p. 81 repr.; Jeffares 2009

~cop. head, pnt. en pied. Lit.: R&L p. 553, fig. 569

~cop., min., gch./ivory, 4.5 rnd. (Schloss Gerzensee, Sammlung Jürg Stuker; Bern, 27.X.1989, Lot 5218. Berlin-Grünwald, Galerie Bassenge, 28–30.XI.2018, Lot 6877)

~grav., with different costume, Jakob Schmutzer a/r Johann Nepomuk Steiner

Kaunitz; v.g. *Richardieu*

J.49.1733 ??Reichsgraf von Kaunitz [Wenzel Anton Fürst von KAUNITZ-Rietberg], pstl, 69x56 (Luzern, Fischer, .XII.1954, Lot 1981, with pendant, attr. Luzern, Fischer, 21–22.V.1992, Lot 2446 repr., with pendant, manière de Liotard, Kaunitz, Swfr12,000. London, Sotheby's, 8.VII.2004, Lot 123 repr., Éc. fr., inconnu, est. £20–30,000, b/i; Galerie Alexis Bordes, cat. 2008, no. 7 repr., inconnu; Vienna, Dorotheum, 24.IV.2024, Lot 150 repr., est. €20–30,000). Lit.: R&L 132, fig. 218 [unfinished] Φ?δσ



Photo courtesy Sotheby's

~pendant: J.49.1737 ??Reichsgräfin von Kauniz [??Fürstin von KAUNITZ-Rietberg, née Maria Ernestine von Stahremberg], pstl/pchm, 69x56 [67.5x53.5] (Luzern, Fischer, .XI.1954, Lot 1981, with pendant, attr. Luzern, Fischer, 21–22.V.1992, Lot 2446 repr., with pendant, manière de Liotard, SwF12,000. New York, Sotheby's, 21.I.2004, Lot 103 repr., attr. Liotard, est. \$35–45,000, \$42,000; Giancarlo Baroni; New York, Sotheby's, 29–30.I.2013, Lot 23 repr., as autograph, est. \$45–65,000, b/i; Paris, Christie's, 25.III.2015, Lot 139 repr., est. €15–20,000, €12,500). Lit.: R&L 131, fig. 217 [unfinished] Φσ



Photo courtesy Sotheby's

~same subject, ¾ to left, min./pchm (PC). Lit.: R&L 133, fig. 133

J.49.1741 [??]Duchess of KINGSTON, née Elizabeth Chudleigh (1720–1788), as La Liseuse, pstl/pchm, 57.5x45, c.1755 (passed to sitter's distant cousin, sister of Sir George Chudleigh, 6th Bt, Susan Chudleigh, Mrs Nathan Haines; her daughter Jane (c.1770–1830), Mrs Charles Strangways; don: Henry Stephen, 3rd Earl of Ilchester; desc. PC 2012). Lit.: Fox Strangways 1883, no. 174; L&R 301 repr.; R&L 293, fig. 426, with errors in provenance Φδσ

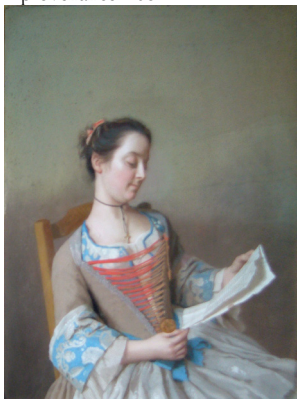


Photo courtesy owner

J.49.1745 Catherine de LA CORBIÈRE, commédienne à Nyon, pstl, 1787 (Liotard letter 10.II.1787). Lit.: L&R 360 n.r., as 1786; R&L 550 n.r.

J.49.1746 Mlle de LA CROIX, jeune & belle personne, vuë de profil; les cheveux tressés & rattachés sur la tête avec un ruban bleu, sur les épaules une draperie de satin bleu qu'elle tient d'une main sur son sein, pstl, 46x37.8 (François Tronchin, Geneva, cat. 1765, no. 99; Paris, Le Brun, 23.III.1801, Lot 93, If6.10; Boisel). Lit.: Geneva 1974, no. 349; L&R 372 n.r.; R&L 356

J.49.1747 Le maréchal D. L. F. [?Philippe-Charles de LA FARE (1685–1752), maréchal 1746], pstl, Académie de Saint-Luc 1752, no. 65. Lit.: L&R 142 n.r.; R&L 237 n.r.

La Live de July, v. Nettine

J.49.1748 Mme Denis-Joseph LA LIVE D'ÉPINAY, née Louise-Florence-Pétronelle de Tardieu d'Esclavelles (1726–1783), pstl/pchm, 69x55, c.1759 (Geneva, mAH, inv. 1826–7. Comm. Mme d'Épinay; don: Dr Théodore Tronchin, Geneva, 1759; seen Zinzendorf, 9.X.1764; desc. Charles-Richard Tronchin-Bernard; don 1826). Exh.: Liotard 1886, no. 45; Paris 1924b, no. 104; Liotard 1925; Geneva 1942; Geneva 1943, no. 854; Paris 1948d, no. 21; Geneva 1948, no. 33; Paris 1956d, no. 89 n.r.; Liotard 1978, no. 16; Liotard 2002a, p. 97 repr. Lit.: Voltaire, letter to Jean de Linant, 22.II.1760; Flaubert, *Notes de Voyages*, I, Paris, 1910, p. 56; Cat. musée Rath 1859, no. 66; Clouzot 1920, p. 164 repr.; Humbert, Revilliod & Tilanus 1897, no. 45, repr. p. 25; Fosca 1956, pl. X; V. & L. Adair 1971, p. 128 repr.; Geneva 1974, p. 194 (iconographie), no. 21 repr.; Gagnebin 1976, fig. 130; L&R 233 repr. clr XLV; Buysens 1988, no. 169; Plaut Weinreb 1995; Liotard 2006, p. 97 repr.; Buysens 2008, fig. 22; R&L 365, fig. 518; Liotard 2015a, fig. 16 φσ



J.49.175 ~cop. Charles Escot (1834–1902), pstl, XIX^e (Versailles). Exh.: Paris 1935b, no. 454. Lit.: René-Doumic 1935, p. 488 n.r. Salmon 2004a, p. 49, fig. 5 repr. clr; R&L p. 520 n.r.; Burns & Saunier 2014, repr.

~cop. Charles Gardon, email, Institut national genevois, exposition 1877, no. 149

J.49.1751 ~cop. Marie Vignier, pstl (Amsterdam). Lit.: R&L p. 405 n.r.

J.49.1752 ~cop. XIX^e, pstl/pchm, 73x57. Lit.: R&L p. 521 n.r.

~cop. Nellie Bean, min., fin XIX^e (Geneva, musée d'Horlogerie et d'Émaillerie). Lit.: R&L p. 521 n.r.

J.49.1753 ~cop. ?XX^e, pstl, small c.30x25 (PC 2014) φκσ

J.49.1754 ~cop. ?XX^e, pstl, 66x55 (Paris, Drouot, Crait & Müller, 19.XII.2016, Lot 124 repr., est. €300–400) φκ

J.49.1755 ~cop., pstl (H. B. Celle a.1913)

~grav.: Lit.: Buffenoir 1913, repr.; François 1915, p. 214 n.3 n.r.

??Mme LA LIVE D'ÉPINAY (Paris, Galliera, Ader, Picard, Tajan, 11.III.1975, Lot 4 repr.). Lit.: R&L p. 521 n.r., ??Liotard, ??Mme d'Épinay [v. Éc. fr.]

J.49.1756 Mr LAMBE, in blue coat, with red waistcoat, pstl, 62x44.5, in Chippendale frame with family arms (London, Christie's, 31.III.1916, Lot 60, 32 gns; Law)

J.49.17565 [olim J.103.133] ?M. de LA MORELLI, intendant du garde-meuble royal [ou ?Philippe Basset de La Marelle (1709–1779)], pstl/pchm, 114x86, c.1750 (San Francisco, FAM, inv. 1965.6. Mlle Loir, label verso. Adolphe Lion 1926, as La Tour. André Seligmann, Paris, 1928–29; Mrs Alexander Hamilton, née Grace Spreckels, San Francisco; Grace Hamilton Kelham; Leila Hamilton Lewis; don 1965). Exh.: San Francisco 2021, no. 7 repr., p. 14,

fig. 3, attr. Lit.: Hattis 1977, no. 22 repr., attr. Allais; Jeffares 2022e, fig. 2 [new attr. 2020, ?] φαδ



J.49.1757 Ami-Jean de LA RIVE (1725–1800), pstl/ppr, 82x64.5, c.1758 (Geneva, mAH, inv. 1936–7. Desc.; don 1936). Exh.: Liotard 1896, no. 432; Liotard 1925; Geneva 1942; Geneva 1943, no. 851; Geneva 1948, no. 36; Liotard 1978, no. 14; Liotard 2002a, p. 93 repr. Lit.: Loche 1976; L&R 223 repr. clr pl. XII; Buysens 1988, no. 187; de Herdt 2003 repr.; Liotard 2006, p. 93 repr.; R&L 355, fig. 508 φσ



L'arrivée, v. Girardot de Vermeux

J.49.176 General Francis LASCELLES (1744–1799), as lieutenant-colonel, 8th dragoons, pstl, c.68x56 ov. [c.1773] (desc.: PC 2010). Lit.: Roethlisberger 2014, p. 187 n.r. φνσ



J.49.1762 La nièce d'un intendant du comte de LAVAN, m/u. Lit.: R&L 23 n.r.

J.49.1763 [?]Jacques-Antoine LAVERGNE (1724–1781) [Pou Hugues Lavergne (1732–1768), son frère], neveu du peintre [?Pierre-Joseph Bernard], avec un laquais, ?son neveu Pierre Clarenç (1744–1803), dit L'Écriture, pstlppr, 81x107, sd / "peint par J E Liotard/1752" (Vienna, KHM, inv. AC 55013, GG-9851. Liotard; acqu. Maria Theresia 1762; Maria Theresia, appartements privés, inv. 1772, Zwei

große Überzwegstück; *olim* Belvedere, Vienna, 1783; Castello di Miramare). Exh.: Liotard 2015a, no. 76 repr. Lit.: Liotard, autobiographie de 1760, “un de ses principaux ouvrages...ses neveux”; Moücke 1762, IV, p. 276, “due quadri...de suoi nipoti”; lettre à Bessborough 28.VI.1763 (“un jeune homme qui écrit une lettre avec un laquais qui lui apporte une bougie”); Mechel 1784, p. 329, no. 20, as of Bernard, poète français, avec son livre *L'Art d'aimer*, Frimmel 1899, p. 209; L&R 138 repr. clr pl. XXXI; Vienna 1980, fig. 152; KHM Verzeichnis 1991, p. 76, T.673; Perez 1997; Haberstatter 2002, p. 155 repr.; R&L 200, fig. 333; Lyon 2012, p. 257, “tout imprégné de rêverie mélancolique”; [Jeffares 2019i](#); Liotard 2023, fig. 45; Baker 2023, fig. 28 φδσ



Zoomify

J.49.1765 Marie-Anne LAVERGNE (1734–1809), nièce de l'artiste, La belle liseuse, pstl/pchm, 54x43, sd “J. E. Liotard lion 1746”, inscr. *verso* “Mad.elle Lavergne de Lion peint par Liotard”, ?Salon de Saint-Luc 1751, no. 81 (Rijksmuseum inv. SK-A-228. Liotard; exh. Paris 1771, no. 17; London, Christie's, 16.IV.1774, Lot 52, est. £100, b/i at 19 gns; liste d'Angiviller, no. 42, as of “la lizeuze Marianne Lavergne sa niece” (“Detestable” – Pierre); inv. p.m. 1789, no. 118; Mme Jacques Guignonat, née Sara Liotard, petite-nièce de l'artiste, 1792; J.-E. Liotard-Crommelin; Mlle M. A. Liotard, Amsterdam; legs 1873). Exh.: Geneva 1792, no. 23 (“à M. Guignonat”); Paris 1948d, no. 11; Munich 1958, no. 117, fig. 80; Liotard 2002b, no. 13 repr. Lit.: Humbert, Revilliod & Tilanus 1897, no. 2 repr., as Mlle Lavergne; Thiel 1976; L&R 91 repr. clr pl. XXI; Loche 1980, p. 189, no. 42 n.r.; Bull 2008, fig. 25; Walczak 2010, fig. 18; R&L 159, fig. 263, as of Anne, dite Marianne, Lavergne (1717–1790), “âgée ici de 29 ans (on lui en donnerait moins)”; Burns & Saunier 2014, p. 93 repr.; Jeffares 2015c repr.; Liotard 2015a, fig. 54; Liotard 2023, fig. 44; Jeffares 2023c; Baker 2023, fig. 18; Капи 2024, p. 64 n.r., accepting new identification [new identification 2023] φδν



Photo courtesy Rijksmuseum

~grav. Daullé & Ravenet, retailed by Liotard and Thomas Major (FD 347). Exh.: Liotard 2018,

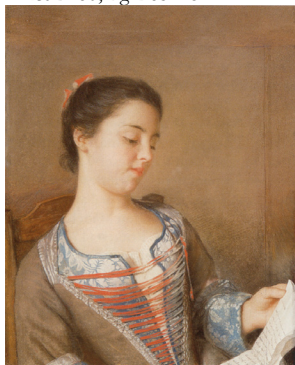
no. 70 repr. Lit.: Goncourt 1881, II, p. 142; R&L p. 363, fig. 264

~v.g. Lewis

~repl., enamel/copper, 7.2x5.5, sd “Pt par Liotard 1752” (Vienna, Federal Chancery. Franz Josef). Exh.: Vienna 1905, no. 86. Lit.: L&R 91¹ repr.; Keil 1999, no. 513 repr.; R&L 213, fig. 350

~repl., min./pchm (Holzscheiter; London, Sotheby's, 28.III.1977, Lot 78). Lit.: Foskett 1979, p. 174, fig. D; R&L 214, fig. 351

J.49.1772 ~repl., pstl/pchm, 37.5x30.5, 1746 (Dresden P162. ?Duc de Richelieu, acqu. à Lyon; “dans le chemin accident arrivé à la liseuse en passant une rivière”). Exh.: Liotard 2018, no. 69 repr. Lit.: Riedel & Wenzel 1765, p. 243; Hübner 1856, no. 1948; Posse 1929, no. P162 repr.; Trivas 1940, p. 91, L&R 92 repr.; Marx 1992, p. 439 repr.; Liotard 2002b, repr. p. 17; Marx 2005, I, p. 678, II, p. 624, no. 2280; Henning & Marx 2007, pp. 101ff repr.; R&L 160, fig. 265 φσ



J.49.1774 ~cop. J. Wells Champney, pstl/pchm, 26.7x18 (New York, American Art Galleries, 21–22.I.1904, Lot 123 n.r.)

J.49.1775 ~cop., pstl/ppr, 37.5x30.5, 1746 (Mlle M. A. Liotard, Amsterdam, 1867; J. W. R. Tilanus; acqu. 23.X.1934 Rodolphe Dunki; Bernard Naef, Geneva, 1978; US PC 2006). Exh.: Amsterdam 1867, no. 103; Liotard 2006, no. 10, repr. p. 113. Lit.: L&R 93 repr.; R&L p. 365 φκ

J.49.1777 => R&L p. 365, ?fig. 267 [numbering unclear] φκ



J.49.1779 ~? “die kleine Lionerin”, cop. Wilde, pstl, Dresden 1817. Lit.: *Leipziger Kunstblatt...*, I, 1817, p. 75 n.r., “war recht gut gerathen”

J.49.178 ~cop., pstl/pchm, 40x32 (Axel Wien, Borken, Germany; Harari & Johns, *Six centuries of old master paintings*, 1989, no. 54; Köln, Lempertz, 27.V.1991, Lot 69 repr., as autograph, est. DM 200,000; London, Bonhams 1992. Vienna, Dorotheum, 4–5.XI.1992, Lot 226, est. ÖSch. 2,100,000–2,500,000, b/i; Vienna, Dorotheum, 6.V.1993, Lot 629 repr., est. ÖSch. 700–900,000; London, Bonhams, 14.VI.1995, Lot 21, a/r Liotard, est. £400–600). Lit.: *Weltkunst*, 1991,

p. 1348 repr.; 1992, p. 1996 repr.; R&L p. 365 n.r. φκσ

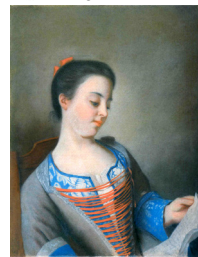


Photo courtesy Derek Johns

J.49.1783 ~version, pstl/pchm, 59.5x48 (Basel, Kunstmuseum, inv. 1124. Prof. J. J. Bachofen-Burckhardt-Stiftung; acqu. 1920). Lit.: L&R 302 repr., as 1774; Liotard 2002b, repr. p. 18, ??autograph; R&L 294, fig. 425 [although eyes follow Miss Lewis J.49.1783 the face is not hers] φβ



J.49.1785 ~?cop., pstl/pchm, 41x32.5 (*olim* Berlin, Hohenzollernmuseum Schloß Monbijou, GK I 41749; lost a.1945). Lit.: Rumpf 1823, I, p. 286

J.49.1786 ~cop., pstl, 38x32 (Laurent Rehfoos, Geneva. Gilliéron, Geneva, Paris, c.1980). Lit.: R&L p. 365 n.r.

J.49.1787 ~cop., pstl, 38x30.5 (R. Peltzer; Amsterdam, Muller, 26.V.1914, Lot 326 repr.). Lit.: R&L p. 365 n.r.

J.49.1788 ~cop., pstl/pchm, 37x30 (Herbert M. Gutmann, Berlin; Berlin, Graupe, 12.IV.1934, Lot 19 repr., attr. RM155; Dr Milan Maric, Zagreb; Lost Art-ID 594408). Lit.: Lossky, *Bulletin de la Société de l'histoire de l'art français*, 1938, p. 186; R&L p. 365 n.r. φκ



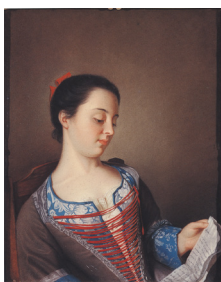
J.49.1789 ~cop., pstl/pchm, 41x33 (P. Fatio, Geneva, 1942; de Morsier, Geneva, 1977). Lit.: R&L p. 365 n.r.

~cop., pnt., 43x33 (Berthel, London, cat. c.1918, repr.). Lit.: R&L p. 365 n.r.

~cop., pnt., 35.3x29.3 (London, Phillips, 28.X.1986, Lot 76 repr.). Lit.: R&L p. 365 n.r.

~cop., pnt., 38x31 (Музей-заповедник «Амгитровский кремль», inv. 2481). Lit.: Капи 2023, p. 65 repr.

J.49.1792 ~cop., pstl/pchm, 40x31, inscr. *verso* “Duchess of Kingston/Collectie Tilanus” (Mrs J. S. Barnes, Devonshire, 1990. Derek Johns, London, 1993; cat. 1998, repr.; acqu. LS Art, Geneva [Simon Studer Art, Geneva]) Lit.: R&L p. 365, fig. 26 φκ



J.49.1793 ~cop., pstl, 27x30 (Magdeburg, Bieberle, 3.XII.2016, Lot 382 repr., anon., est. €250) [new attr.] φκ

J.49.17931 ~cop., pstl, 40x32 (Berlin, Dannenbeg, 8–10.XII.2022, Lot 3693 repr., anon., est. €100) [new attr.] φκ

v.q. Lewis; Kingston

J.49.1795 Le déjeuner LAVERGNE, ?Catherine Lavergne (1723–1757), [?Marguerite (1727–1795) ou Andrienne (1728–1768)], et sa nièce [??]Mlle Clarens (a.1745–) [Anne Delessert (1749–1802), plus tard Mme Louis Gleyre], pstl/ppr, 81x107, sd on music sheet ✓ “Liotard/a lion/1754” (London, National Gallery, inv. NG 6685. Acqu. Duncannon c.1755, 200 gns [200 pièces, Liotard 1760 autobiographie]; Roehampton, 1785, Musgrave’s lists, as “Liotard’s two nieces”; Earl of Bessborough, London, Christie’s, 7.II.1801, Lot 75*, 85 gns; ; b/i or sold to Bessborough’s son-in-law Aubrey Beauclerk, 5th Duke of St Albans (1740–1802); sale p.m., London, Christie’s, 27.III.1802, Lot 78, as “portraits of a young lady and gouvernante at breakfast”, as b/i at Bessborough sale [annotation], 37 gns; [?Roch Jaubert (1756–1813)]; acqu. 1805, as from Bessborough, Luke Foreman (1757–1814), of Upper Harley Street, London; his widow, née Mary Chandler (1763–1834); not mentioned in her will; London, Christie’s, 19–20.III.1835, 2nd day, Lot 51, as Le Dejeuné, b/i at 30 gns; Mrs Foreman’s nephew and residual legatee, Edward Greene (1795–1887), lieutenant, Royal Artillery, Farnborough Lodge, Hampshire; desc.: his niece, Mrs Thomas L’Estrange Ewan, née Mary Greene (1794–1875), Dedham; her daughter Mrs Henry Golding-Palmer, née Mary Isabella Ewen (1831–1916), Stratford St Mary and 36 Queen’s Gate; sale p.m., London, Christie’s, 28.VII.1916, Lot 5 n.r., as of lady and daughter, 1200 gns; Freeman, for Asher Wertheimer; ?sale p.m.[not verified, not in Lugt], 1.X.1918, £1450; Eugene Pinto (1854–1932); desc.: Major Richard James Pinto (1892–1969), London; his widow, Gladys Hirsch (1899–1985)their son George Richard Pinto (1929–2018); dep.: London, National Gallery, XI.2018, inv. L1246; acqu. acceptance in lieu of £8.76 million tax, 2019). Exh.: Liotard 2023, fig. 1. Lit.: Liotard, autobiographie de 1760, “un de ses principaux ouvrages...ses nièces”; Mücke 1762, IV, p. 276, “due quadri...de suoi nipoti, uno pagato dugento ghinee...d’un Cannon”; Liotard 1781, p. 57; Tilanus 1897, pp. 139, 209, “crayon d’une execution inimitable”, as of “Mlle Lavergne, fille de Pierre Lavergne et de Mme Lavergne, née Liotard, et sa nièce Clarence, fille de sa sœur”, as a/r pnt. as 1750; Margaret G. M. Williams, letter, *Country life*, 12.IX.1952, p. 770 repr.; Fosca 1956, pp. 64f; Previtali 1966, pl. III; Donald Adamson & Peter Beauclerk-Vere, *The house of Nell Gwyn*, 1974, p. 93; L&R 164 repr., as ?Royal Academy 1774 [?]; Loche 1980, no. 65; Anderson 1994, fig. 25; Perez 1997, fig. 2; Roethlisberger 2001b, fig. 1; R&L 299, fig. 435;

Kisluk-Grosheide & Munger 2010, fig. 60; Lyon 2012a, p. 257; Koos 2014, figs. 162, 163; Liotard 2015a, fig. 63; Loche 2015; Sebag-Montefiore 2016, pp. 151, 168, fig. 4; Liotard 2018, p. 24 repr.; Jeffares 2018n; *Cultural gifts scheme & acceptance in lieu report 2020*, no. 17 repr., pp. 32ff, as of mother and daughter [?]; *The times*, 21.XII.2020, p. 11 repr.; Paris 2023c, p. 63, fig. 3; Jeffares 2023c; Baker 2023, fig. 29 Φδσ



Zoomify

~repl., pnt., 81x103, , ✓ “Liotard/a londres/1773” (Liotard; London, Christie’s, 15.IV.1774, Lot 76, est. £100, b/i at 47 gns; liste d’Angiviller, no. 65; desc.: Mlle M. A. Liotard, Amsterdam; acqu. 1873, fr7500, Léon Gauchez; Edmond de Rothschild, Paris, 1897; James A. de Rothschild, Waddesdon; PC 2008). Exh.: Amsterdam 1872, no. 129, as “Het ontbijt”, geschilderd 1750 te Lyon; Liotard 2023, fig. 2. Lit.: Liotard 1781, pp. 48f, 57; Humbert, Revilliod & Tilanus 1897, no. 111, repr. p. 73; L&R 165 repr.; Loche 1980, p. 199f; Lippincott 1985, p. 128 n.r.; R&L 495, fig. 699; Koos 2014, figs. 163, 164

J.49.1798 Lady Cecily Margaret “Cecilia” LENNOX (1750–1769), pstl, 38x23 ov. (Duke of Leinster, Carton, cat. 1885, p. 36, unattr., annotated “by Liothard”.)

J.49.1799 LENORMAND [Charles-Guillaume Le Normant d’Étiolles (1717–1799), mari de Mme de Pompadour], m/u, c.1735. Lit.: L&R 14 n.r.

J.49.18 Miss Susanna LEWIS, later Mrs John Campbell of Dunoon (1728–1804), as La liseuse, pstl/pchm, 65.5x50.8, inscr. verso “M^{rs} Susanna Campbell/Wife of Col. John Campbell/of Blunham House Bedford Sh^{re}/and of Dunoon in Argyle Sh^{re}/Mother of Charlotte Julia/Countess of Rothes/Wife of 12th Earl//Painted by/Liotard in 1755/An Italian Artist”, 1754 ([?comm. sitter’s aunt, Mrs John Rayner, née Elizabeth Collyer (1714–1800); legs: sitter; legs:]; the sitter’s daughter, Charlotte Julia, Countess of Rothes (1769–1846), wife of the 13th Earl; her daughter, Lady Elizabeth Jane Wathen (–1861); desc. Clan Leslie Charitable Trust; London, Christie’s, 4.VII.1995, Lot 149 repr., est. £150–250,000, £300,000 [=£331,500]; Ann & Gordon Getty; New York, Christie’s, 20.X.2022, Lot 17 repr., est. \$1,500,000–2,500,000, \$1,500,000). Lit.: R&L 292, fig. 424; Jeffares 2023c Φσ



Photo courtesy Christie’s

~grav. James McArdell. Lit.: R&L p. 460, fig. 427

=?grav.: James McArdell. Lit.: Heineken 1778, I, p. 382; J. G. Stimmel, Winckler catalogue, 1810, p. 5, no. 10, as Mademoiselle Newhouse, jeune dame assise sur une chaise à long dos, réfléchissant sur une lettre qu’elle tient de deux mains, 1754

~grav. Charles Spooner, 1750s, as “Miss Lewis”. Lit.: R&L p. 460 n.r.

~grav. Richard Purcell (“Charles or Philip Corbutt”), as “Miss Lewis”. Lit.: R&L p. 460, fig. 428

v.q. Lavergne; Kingston

J.49.1808 La famille de l’artiste, projet inachevé, 1777. Lit.: R&L 513 n.r.

J.49.1809 Mme Jean-Étienne LIOTARD, née Marie Fargues (1728–1782), femme de l’artiste, pstl/?ppr/?pchm, 44.5x41, sd ✓ “peint par Liotard/1757” (La Chau-de-Fonds, mBA, inv. 1306.14. Famille Fargues; J.-E. Liotard-Crommelin; Mlle M. A. Liotard, Amsterdam; J. W. R. Tilanus; 23.X.1934, Lot 1040; P. Bottenweiser, antiquaire, Paris, 1938; W. S. Kundig, Geneva, 1940. René & Madeleine Junot, La Chau-de-Fonds, 1940; legs 1986). Exh.: Liotard 1885, no. 9; Liotard 2015a, no. 3 repr. [London only]; Lausanne 2018, no. 18, repr. p. 40. Lit.: ?Liotard, autobiographie de 1760, “un de ses principaux ouvrages...sa femme”; ?Mücke 1762, IV, p. 276, “quella di sua consorte”; Humbert, Revilliod & Tilanus 1897, no. 100, repr. p. 16; Liotard 1992; L&R 215 repr.; Bull 2008, fig. 26; R&L 336, fig. 481; Liotard 2023, fig. 14 φσ



v.q. Countess of Coventry

J.49.1812 Mme LIOTARD, pstl, 30x22, 1783 (Elspeet, C. Tilanus; Amsterdam. 23.X.1934, Lot 1041). Lit.: Humbert, Revilliod & Tilanus 1897, no. 101 n.r., as c.1768; L&R 335 repr.; R&L 547, fig. 757 φ



J.49.1814 ?Jean-Daniel LIOTARD (1764–p.1821)/?Jean-Étienne Liotard (1758–1822), pstl/ppr, 28x21, 1779 (Liotard; J. E. Liotard-Crommelin; Mlle M. A. Liotard, Amsterdam; J. W. R. Tilanus; C. B. Tilanus; Laurent Rehfoos 1933; Jacques Salmanowitz, Geneva; PC 2008). Lit.: Humbert, Revilliod & Tilanus 1897, no. 104 n.r.; L&R 324 repr.; R&L 536, fig. 752 φδ



J.49.1816 Jean-Étienne LIOTARD (1758–1822), fils de l'artiste, sanguine, pierre noire, reh. pstl, 28.1x21.4, 1777 (Geneva, mAH, inv. 1934-28. Liotard; J.-E. Liotard-Crommelin; Mlle M. A. Liotard, Amsterdam; J. W. R. & C. B. Tilanus; Amsterdam, 23.X.1934, Lot 1; acqu. Société des Amis du musée de Genève). Exh.: Geneva 1942; Geneva 1943, no. 845; Geneva 1948, no. 55; Munich 1958, no. 303; Liotard 1978, no. 59. Lit.: Fosca 1956, pl. XXVII; L&R 315 repr., as pstl; Liotard 2002a, p. 42 repr.; R&L 514, fig. 712

J.49.1817 ~cop. Liotard fils, crayon noir, aquarelle (PC). Lit.: R&L p. 638, fig. 722

J.49.1818 Jean-Étienne LIOTARD, fils de l'artiste, pstl/pchm, 43.5x35, 1784 (Liotard; le sujet; Mlle M. A. Liotard; J. W. R. & C. B. Tilanus, Amsterdam; L. Rehfoos, Geneva, 1934; Jacques Salmanowitz, Geneva, 1978; PC 2008). Lit.: Humbert, Revilliod & Tilanus 1897, no. 102 n.r.; L&R 357; R&L 545, fig. 755 φ



~repl., enamel. Lit.: L&R 357 n.r.; R&L p. 661 n.r.

??Jean-Étienne LIOTARD, fils de l'artiste (Geneva, mAH, inv. 1949-20). Lit.: L&R 278 repr.; Buysens 1988, no. 191 [v. Hamilton]

J.49.1822 ?Jean-Michel LIOTARD (1702–1796), olim ?autoportrait, pstl, gch./pchm, 55x38.5, a.1738 (Geneva, mAH, inv. 1865-1. Legs David Claparède 1865). Exh.: Paris 1924b; Liotard 1925; Paris 1948d. no. 11; Zurich 1978, no. 2. Lit.: Humbert, Revilliod & Tilanus 1897, no. 98 n.r., as auto; *Gazette des beaux-arts*, .IX.1924, p. 138 repr., as auto; Trivas 1936a; L&R 30 repr.; Buysens 1988, no. 173 repr.; Liotard 2006, p. 39 repr.; R&L 30, fig. 33 φδσ



J.49.1824 ?M. LIOTARD DE PLAINPALAIS, pstl/pchm, 60x48, c.1760 (Geneva, mAH, inv. 1865-2. Legs David Claparède 1865). Exh.: Liotard 1925; Paris 1948d, no. 28; Geneva 1948, no. 49; Liotard 1978, no. 20; Liotard 2002a, p. 51. Lit.: Humbert, Revilliod & Tilanus 1897, no. 107 n.r.; L&R 259 repr. clr pl. XLVIII; Buysens 1988, no. 174; Liotard 2006, p. 49 repr.; R&L 379, fig. 539 φδσ



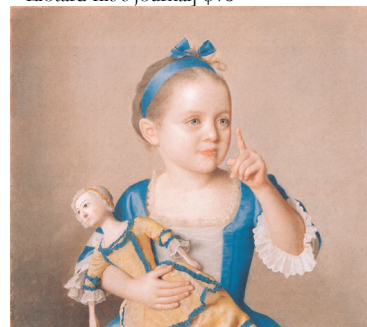
J.49.1826 Marc LIOTARD de La Servette (1717–1792), pstl/ppr, 65x53, sd ← “J. E. Liotard à 73 ans a/peint ce portrait/en 1775”; & pendant: J.49.1827 épouse, née Marianne Sarasin (1733–1827), pstl/ppr, 66.2x55.2, 1775 (Geneva, mAH, inv. 1865-4/3. Legs David Claparède). Exh.: Liotard 1896, no. 403/404; Liotard 1925; Paris 1948d, no. 29/30; Geneva 1948, no. 50/51; Liotard 1978, no. 26/27; Liotard 2002a, p. 53/52 repr.; Geneva 2007; Geneva 2019. Lit.: Humbert, Revilliod & Tilanus 1897, no. 108/109 n.r.; Fosca 1956, pl. -/XIII; V. & L. Adair 1971, p. 143 repr./-, Loche 1976, L&R 313 repr. clr pl. LV/314; Buysens 1988, no. 176/175; Liotard 2006, p. 51/50 repr.; R&L 507/508, fig. 715/714 φσ



~cop., v. Renée Sarasin

J.49.1831 Mme Marc LIOTARD de La Servette, née Marianne Sarasin, pstl, 36x32, s “Liotard”, 1780–82 (Edouard Humbert, Geneva, 1886; Mme veuve Humbert 1897; desc.: Dapples, Vevey, a.1978; PC 2024). Exh.: Liotard 1886, no. 17. Lit.: Humbert, Revilliod & Tilanus 1897, no. 109* n.r.; L&R 331 n.r.; R&L 509 n.r. φν

J.49.1832 [Marie-Thérèse LIOTARD (1763–1793)] [??]Marie-Anne-Françoise Liotard, future Mme Moïse de FERNEX (1767–1830) avec poupée, pstl/pchm, 46x51.5, [c.1767] (Vienna, Schönbrunn, inv. GG-9855. *Olim* Castello di Miramare). Exh.: Vienna 2010, no. 18 repr.; Liotard 2015a, no. 5 repr., both as of Marianne. Lit.: L&R 296 repr.; Iby & Koller 2000, p. 170, det. repr., as of Marie-Thérèse, c.1765; Ribeiro 2002, fig. 168; R&L 506, fig. 712, all as of Marianne; Jeffares 2016c, new identification; Roethlisberger 2017, p. 161; Baker 2023, fig. 31 [traditional identification as of Marianne is based on Trivas's misreading of Liotard fils's journal] φνσ



Liotard, v. Bassompierre; Fernex Countess of LONSDALE (Ranfarly; London, Christie's, 21.VI.1929, Lot 80 repr., as Liotard) [v. Lonsdale]

J.49.1836 Mme Rodolphe de LORIOL, née Catherine Tronchin (1730–1792), pstl/ppr, 50.5x41, 1760–61 (desc.: Loriol, Bois d'Ely; PC). Lit.: L&R 241 repr.; R&L 382, fig. 542; Nyon 2016, ill. 72, repr. avec cadre φ



J.49.1838 LOUIS XV (1710–1774), en habit rouge, 1750, ?Salon de Saint-Luc 1751, no. 75; 1752, no. 57

~cop., m/u [pnt.], 40.6x59.6 [sic] (Versailles, magasin, 1784, inv. 476). Lit.: Durameau 1784, III, p. 27, no. 81

J.49.1839 ~version, pstl/ppr bl.-gr., 63x46.5 (Stupinigi. *Olim* Castello di Colorno). Exh.: Liotard 2015a, no. 51 repr. [London only]. Lit.: L&R 105 repr.; Hugues 2004, p. 68 repr.; R&L 182, fig. 287; Salmon 2018, p. 178 n.r., as a/r La Tour, J.46.2082 Φνσ



~repl., enamel (Mrs V. Howden a.1978)
~repl. (château de Fléville). Lit.: Hugues 2004, p. 72 n.r.; R&L p. 390, as ~Vannes version
~cop., pnt., 79x64 (PC Touraine. Montbazou, Rouillac, 6.VI.2021, Lot 47)
~cop. Rouquet, enamel, 4.3x3.5 ov. (Louvre, inv. RF 189. Philippe Lenoir; don 1874)
~cop., min./ivory, Ø5.4 (London, Christie's, 17.XI.2009, Lot 76 repr.)

J.49.1845 LOUIS XV, m/u [?pstl] (Liotard; seen Zinzendorf, 7.X.1764) [?=Paris 1771, no. 88 *infra*]

J.49.1846 LOUIS XV, en armure (?lost; existence inferred) [similar to L&R 105 in pose, armour from L&R 106]

J.49.1847 ~cop., pstl (Vannes, musée, 886.1.1, as J.-B. Van Loo). Lit.: R&L p. 390, fig. 295, imitation anonyme contemporaine; Salmon 2018, p. 178 n.r. Φνσ



Photo courtesy musée Vannes

J.49.185 LOUIS XV, à vue perdue, pstl?, 1749–50. Lit.: L&R 106 n.r.

~(en armure) grav.: Petit. Lit.: Hugues 2004, p. 66 repr.

~(en habit) grav.: Vispré, , *Mercur de France*, .VII.1750, p. 175; L&R 106¹

J.49.1853 =?one of above, LOUIS XV, pstl
~version, min. (Liotard; exh. Paris 1771, no. 88; London, Christie's, 16.IV.1774, Lot 63, 6 gns; Godfrey). Lit.: L&R, s.no. 106 n.r.; R&L p. 390 n.r.

~various mins. Lit.: R&L pp. 390f n.r.
~cop., pnt., 81x64 (Paris, Ader, 18.XII.2020, Lot 231 repr., éc. fr. XIX^e, dans le goût de La Tour)

J.49.1856 LOUIS, duc de Bourgogne, dauphin (1729–1765), pstl/pchm, 59x49, 1749–50 (Stupinigi. *Olim* Castello di Colorno). Exh.: Liotard 2015a, no. 52 repr. [London only]. Lit.: L&R 116 repr.; Hugues 2004, p. 68 repr.; R&L 176, fig. 285; Baker 2023, fig. 20 φσ



J.49.1858 ~cop. Paul Vincent, 1763. Lit.: R&L p. 385 n.r.

~cop. pnt., 60x50 (Paris, Lombrail & Teuquum, 25.VI.1998, Lot 96; New York, Sotheby's, 17.X.1997, Lot 120; Zurich, Sotheby's, 29.III.2000, Lot 28). Lit.: R&L p. 385 n.r.

J.49.186 ~cop., pstl/pchm, 55.5x46, 1761 (Jacques Duval, antiquaire, Paris, c.1990). Lit.: R&L p. 385 n.r.

J.49.1861 LOUIS le dauphin, pstl/ppr, 60x49, 1750 (Rijksmuseum 2932; SK-A-235. Liotard; seen Zinzendorf, 7.X.1764; exh. Paris 1771, no. 28; liste d'Angiviller, no. 50 ("Cecy a pu réussir: Collet a bien réussi" – Pierre); inv. p.m. 1789, no. 125, 153 livres; J.-E. Liotard-Crommelin; Mlle M. A. Liotard, Amsterdam; legs 1873). Exh.: Liotard 2002b, fig. 16. Lit.: Humbert, Revilliod & Tilanus 1897, no. 15, repr. p. 108; Thiel 1976; L&R 117 repr.; Loche 1980, p. 196; R&L 177, fig. 290 Φσ



Photo courtesy Rijksmuseum

~grav. F.-X. Vispré, *Mercur de France*, .VII.1750, p. 175. Lit.: R&L p. 386, fig. 309

~version, min., Carnet royal, left leaf, upper right. Lit.: M. Roethlisberger, "Un bijou royal de Liotard", *L'Œil*, 368, .III.1986, pp. 30–36; Herdt 2003, p. 90 repr.; Hugues 2004, p. 72, n.13 n.r.; R&L 185, fig. 310

~min. (Geneva, Sotheby's, 21.V.1992, Lot 33, with pendant)

J.49.1867 Madame LOUISE de France (1737–1787), pstl/ppr, 66.5x53.5 (Stupinigi). Lit.: V. & L. Adair 1971, p. 137 repr., as of Madame Infante, L&R 114 repr. clr pl. XXV; R&L 180, fig. 288 φ



~cop., m/u [pnt.], 59.6x48.7 (Versailles, magasin, 1784, inv. 597). Lit.: Durameau 1784, III, p. 29, no. 82

~cop., m/u [pnt.], 59.6x48.7 (Versailles, magasin, 1784, inv. 598). Lit.: Durameau 1784, III, p. 29, no. 83

~repl., pnt., 62.3x48.8 (Liotard; liste d'Angiviller 1785, no. 64; Liotard; inv. p.m. 1789, no. 132). Lit.: R&L p. 388 n.r.

~cop., pnt., 60x50 (Parma, Galleria Nazionale). Lit.: R&L p. 388 n.r.

~cop., pnt., 64x50 (Parma, Palazzo dell'Amministrazione Provinciale). Lit.: R&L p. 388 n.r.

~cop., pnt., 60x50 (Parma, Galleria Nazionale). Lit.: R&L p. 388 n.r.

~cop., pnt., 60x50, 1755 (for l'abbesse de Fontevault). Lit.: R&L p. 388 n.r.

~cop., pnt., 60x50, 1755 (for Mlle de Braque). Lit.: R&L p. 389 n.r.

~cop., pnt., inscr. "Madame Sophie" (château de Breteuil). Lit.: Hugues 2004, p. 70; R&L p. 389 n.r.

~cop., pnt., 63.5x52 (Paris, Drouot, Rémy Le Fur, 27.XI.2015, Lot 63 repr., as éc. fr., ?Élisabeth de Bourbon-Condé, Mademoiselle de Sens)

~version, min., Carnet royal, right leaf, lower left. Lit.: Herdt 2003, p. 90 repr.; Hugues 2004, p. 70 n.r.; R&L 185, fig. 310

~cop., miniature/ivory, 3.0x2.5 ov. (Vienna, Österreichische Nationalbibliothek, Sammlung Habsburg, inv. E 20442-B; dep.: Miniaturenkabinett, Hofburg). Exh.: Vienna 1905, no. 357. Lit.: Keil 1999, no. 100 repr., as of Maria Isabella

~cop. Dailly, min./tabatière (Baltimore, Walters Art Museum). Lit.: Hugues 2004, p. 70 repr.

~Madame LOUISE, *Mérelle le jeune la tête a/r Liotard (duc de Gesvres, château de Saint-Ouen) [v. Mérelle]*

J.49.188 LOUISA ANNE, Princess of England (1749–1768), sister of George III, pstl/pchm, 40x31, 1754 (Royal Collection RCIN 400900. Comm. Augusta, Princess of Wales, 1754). Exh.: London 2002b, no. 387 repr.; London 2014b, no. 244 repr.; Liotard 2015a, no. 31 repr.; New Haven 2017, no. 9.09 repr. [London only]. Lit.: Cust 1909, p. 219 n.r., as Knapton or Liotard; Millar 1963, no. 586 repr.; Plumb & Weldon 1977, p. 193 repr.; L&R 182 repr.; Scott 1985, fig. 1; Roberts 2008, p. 246 repr.; R&L 255, fig. 378; Liotard 2023, fig. 42; Baker 2023, fig. 23 φσ



~grav. R. Houston. Lit.: R&L p. 437, fig. 381
 J.49.1883 Frederike LOUISE Wilhelmine
 Erbprinzessin von Braunschweig-
 Wolfenbüttel, née Prinses van Oranje Nassau
 (1770–1819), ∞ Erbrinz Karl Georg August,
 pstl/pchm, 68x58, sd v “J. E. Liotard/1772”
 (Moscow, Pushkin Museum. Comm.1772,
 D/3128, including 3 cop.; Prussian ruling
 family, a.1845; Berlin, Hohenzollernmuseum
 Schloß Monbijou, GK I 2918; taken a.1945;
 Lost Art-ID 004677). Exh.: Liotard 1985, no.
 36 repr. Lit.: Humbert, Revilliod & Tilanus
 1897, no. 17 n.r.; Brieger 1921, repr. p. 112, as
 of Erbprinz Wilhelm von Oranjen; L&R 287
 n.r.; R&L 481, fig. 681; Kapu 2024, p. 56 repr.
 φ



~grav. Jacob Houbraken & Aert Schouman,
 1759



~dessin (Geneva, mAHL). Lit.: L&R 287¹ repr.;
 R&L p. 610, fig. 685
 J.49.1886 ~?3 repl. (according to comm.)
 J.49.1887 LUDWIG ERNST Herzog von
 Braunschweig-Wolfenbüttel (1718–1788),
 chev. Orla Biallego 1741, generalkapitän der
 Niederlande, gouverneur van Den Bosch;
 persoonlijk gouverneur van Willem V 1759,
 pstl, 64.5x54, sd v “par/J.E. Liotard/1755”
 (comm. Prinses Anna van Oranje-Nassau,
 D/577½ with pendant, Bentinck; W. G. F.
 Bentinck van Rhoon (1762–1835); baronne
 van Nagell, née Ottoline Frederika Louise
 Bentinck (1793–1860); Mevr. Willem Johann
 Cornelis Huysen van Kattendyke, née
 Gustavine Ottoline Frederique Sophie van
 Nagell, The Hague; desc.: Huysen van
 Kattendyke, The Hague; PC 2008). Exh.: The
 Hague 1903, no. 73; Rotterdam 1946, no. 34
 n.r.; Liotard 1985, no. 38, p. 115. Lit.: Staring
 1947, pl. 9; L&R 188 repr.; R&L 311, fig. 448
 φ