

Neil Jeffares, *Dictionary of pastellists before 1800*

Online edition

FORSSLUND, Jonas

Fors 19.XI.1754 – Stockholm 9.III.1809

He seems to have signed Forslund. Painter, pastellist and sculptor. He began his career in Uppsala, but a portrait of Gustaf III attracted the attention of Duke Karl, who brought him to Stockholm. Here he worked closely with Lundberg (*q.v.*) and also studied oil painting, under Pasch. He was appointed a member (1784) and then professor (1800) in the Stockholm Konstakademien. He was married twice: to Anna Maria Westerling, in 1779, and then to Hedvig Beata Amberg.

Bibliography

Bénézit; *Nordisk familjebok*, 1908, VIII, p. 908; Sabrina Norlander, "Jonas Forsslund: företrädare för en genuin svensk porträttkonst", *Valör*, 1995/1, pp. 14–19; Uppsala, 1986; Saur; Gunnar Svensson, *Jonas Forsslund 1754–1809: Carl Th. Staaff 1816–1880: två kungamålare*, Östersund, 1963

Pastels

J.321.091 Officier suédois, de la famille BERONIUS, pstl, 49x41 ov. (Stockholm, Bukowskis, 7–8.VI.2018, Lot 443 repr., attr., est. SwKr15–18,000) φαδ



J.321.101 Fru Niklas Peter BJÖRNMARCK, née Maria Sofia Juliana von Blixen (1748–1785), pstl, 29x23 (Helsinki, Finnish National Gallery, inv. S18, as by Lundberg. Legs Sinebrychoff 1921) [new attr.] φν



Blixen, v. Björnmarck

J.321.104 Carl BOMAN (1729–1814), kammartjänare; & pendant: J.321.105 spouse, née Margareta Nelin, pstl/ppr, 58x48 ov., sd "Forsslund 92", 1792 (Stockholm, Auktionsverk, 5.XII.2002, Lot 1608 repr., est.

SKr25–30,000, b/i. Stockholm, Bukowskis, 27–30.V.2008, Lot 389, est. SKr25–30,000) φ



J.321.108 Beata Catharina Lovisa CEDERSTRÖM (1771–1862), pstl, 58.5x50 ov. (desc.: Cederström, Beatelunds; Rikstens; Södermanland; Stockholm, Bukowskis, 8–10.VI.2016, Lot 814 repr., est. SKr12–15,000). Lit.: Strömbom 1935–43, I, p. 153 φ



J.321.11 Charlotta Ulrica CEDERSTRÖM (1768–1833), pstl, 60x50 ov. (desc.: Cederström, Beatelunds; Rikstens; Södermanland; Stockholm, Bukowskis, 8–10.VI.2016, Lot 816 repr., attr., est. SKr12–15,000) φ



J.321.111 Gustafva Juliana CEDERSTRÖM (1746–1801), pstl, 59x50 ov., (desc.: Cederström, Beatelunds; Rikstens; Södermanland; Stockholm, Bukowskis, 7.XII.2023, Lot 711 repr., est. SKr20–25,000) φν



J.321.112 Henrietta Elisabeth CEDERSTRÖM (1770–1854), pstl, 57.5x49.5 ov. (desc.: Cederström, Beatelunds; Rikstens; Södermanland; Stockholm, Bukowskis, 8–10.VI.2016, Lot 815 repr., attr., est. SKr12–15,000) φα



J.321.114 Friherinna DE GEER av Leufsta, née Catharina Charlotta Ribbing (1720–1787), pstl, ov. (Stockholm, Nordiska Museet, inv. NM.0239353. Don Jean-Jacques De Geer af Finspång 1949) φ



J.321.116 Adam Ferdinand DRUFVA (1779–1838), stallmästare, pstl, 56x49 ov. (Stockholm, Nationalmuseum, inv. NMGrh 1893. Don 1917) φ



J.321.118 Jacob Adolf FLEETWOOD (1747–), kaptän, pstl, 66x51, sd 1798 (Stockholm, Bukowskis, 7.IV.1976, Lot 242 n.r., SKr10,500)

J.321.119 Claes de FRIETZCKY (1727–1803), jurist, politiker, pstl (Stockholm, Nationalmuseum, inv. 3588, attr.) [not located 2010 database]

J.321.12 Peter GÖDECKE, brukspatron; & pendant: J.321.121 spouse, pstl/ppr, 67x53/65x52, sd “Forsslund 1800” (Stockholm, Nationalmuseum, inv. NMB 231/56. Acqu. 1870)

J.321.122 Kommerseradet Lorents GÖRGES (1722–1803), pstl, 70x54; & pendant: J.321.123 spouse, née Hedvig Elisabeth Broman (1730–), pstl, 70x54 (Freiherr Hugo Rehbinder; Stockholm, Bukowskis, 28–29.IV.1913; O. M. Strömberg; Stockholm, Bukowskis, 14.V.1991, Lot 11; Stockholm, Bukowskis, 5.XII.2000, Lot 363 repr., attr., est. SKr50–60,000). Lit.: Georg Göthe, *Ett svenskt porträttsgalleri, samlat av Hugo Rehbinder*, Stockholm, 1913, no. 180/182 [?attr.] φ



Photos courtesy Bukowskis

J.321.127 GUSTAV III (1746–1792), pstl, 45x56, s v “Forsslund”, c.1783 (Inez Möller (–1979); Eva Goldman; PC 2009) φ



J.321.129 =?m/u, Stockholm, Konstakademie, 1799

J.321.13 GUSTAV III, pstl, 66x53 ov. (Stockholm, Nationalmuseum, inv. NMB 26, attr.)

J.321.131 Greve Johan Henning GYLLENBORG (1756–1830), lagman i Blekinge, pstl, 59x39 (Göteborg, Bukowskis, 14.II.2016, Lot 749004 repr., est. SEK10,000) φ



J.321.133 ~version, pstl, 32x25 [c.1780] (Stockholm, Nationalmuseum, inv. NMGrh 1586, as circle of Lundberg) [new attr.] φ



J.321.135 Grevinna GYLLENBORG, née Friherrinnan Albertina von Axelsson (1771–1832), pstl, 61x49 ov. (Göteborg, Bukowskis, 14.II.2016, Lot 749038 repr., est. SEK15,000) φ



J.321.137 Greve Nils [Göran Nilsson] GYLLENSTIERNA af Björksund (1724–1799), riksmarskalk; & pendant: J.321.138 grevinna (∞ 1754), née [Eva Maria] Ribbing [(1730–1812)], pstl (Björksund, Södermanland). Lit.: *Nordisk familjebok*, 1908, VIII, p. 908 n.r.

J.321.139 Greve Carl Henric von HERMANSSON (1756–1824), Lätta Livdragonemas uniform, pstl/ppr, 56x46 ov., sd v 1788 (Stockholm, Norden, 25.V.1998, Lot 165 repr., est. SKr25–30,000, SKr33,000) φ

J.321.141 Maria Charlotte HOLTERMAN (1768–1841), pstl, 56x46 ov. (Jernström, Nora; Stockholm, Bukowskis, 27.V.2009, Lot 258 repr., est. SKr15–20,000) φ



J.321.143 KARL XIII, Hertig av Södermanland, sedermera Konung av Sverige 1809 (1748–1818), pstl/ppr, 80x65 (Stockholm, Nationalmuseum, inv. NMB 15). A/r Lundberg

J.321.1435 Gabriel Werner KOSCHELL (1780–1828), enfant, pstl, 30x23.5 ov., inscr. *verso* “Detta lilla söta Portait af lilla Gabriel Werner Koschell, 1782. Komm de...”; & pendant: J.321.1436 sœur, Mme Gustaf Wilhelm Conradi, née Eleonore Koschell, enfant, pstl, 30x23.5 ov. (Stockholm, Auktionsverk, 26.V.2005, Lot 1970/1969 repr., as Lundberg, est. SKr10–12,000, SKr70,000/37,000) [new attr., ?] φ





J.321.144 Flickorna LEFEBURE och Deras guvernant Mlle Plank, pstl/ppr, 67x91, sd 1791 (Stockholm, Lilla Bukowskis, 17.V.1993, Lot 153 repr., est. SKr30–35,000, SKr30,000)

J.321.1445 Grevinna (Jean) LE FEBURE, née Margaretha Charlotta Lilienberg (1753–1829), pstl, 67x50 (Stockholm, Bukowskis, 8–9.V.1890, Lot 228. Stockholm, Bukowskis, 11–13.X.1950, Lot 892. Stockholm, Bukowskis, 7.XII.2023, Lot 826 repr., est. SKr12–15,000) φav



J.321.145 Klädesfabrikör LINDH, pstl, 58x48; & pendant: J.321.146 spouse, pstl, 58x48 (Stockholm, Bukowskis, 29.XI.–2.XII.1991, Lot 816 repr., est. SKr25–30,000) φ



Photos courtesy Bukowskis

J.321.15 LOVISA ULRIKE, drottning av Sverige (1720–1782), pstl/ppr, 62x43 (Stockholm, Nationalmuseum, inv. NMB 16). A/r Lundberg

J.321.151 LOVISA ULRIKE, pstl/ppr, 65x50 (Stockholm, Nationalmuseum, inv. NMDrh 38). A/r Lundberg, attr. φ



J.321.153 Grevinna LÖWENHJELM, née Kristina Augusta von Fersen [(1754–1846)], pstl, 61x51 ov. (Stockholm, Lilla Bukowskis, 22.V.1995, Lot 279, attr., SKr14,000)

J.321.154 Eva Ulrica MÖRNER af Morlanda (1780–1796), pstl/ppr, sd 1797 (Stockholm, Bukowskis, 5.XII.2000, Lot 362 repr., est. SKr25–30,000, SKr22,000) φ



Photo courtesy Bukowskis

J.321.157 Greve Karl Gustaf PIPER (1737–1803), pstl, 65x52, sd “Forslund 1794” (Stola herrgård, Kållands socken, Skaraborgs län. Stockholms Auktionsverk, 3.VI.2010, Lot 2126 repr., est. SKr20–25,000; Stockholm, Auktionsverket, 8.XII.2010, Lot 2582 repr., est. SKr15–18,000, SKr10,000) φ



J.321.159 Fru Klas RÅLAMB, née Charlotta Augusta Adlerfelt (1765–1791), pstl/ppr, 59x48 ov., sd “Forslund” (Gustaf Murrays morföräldrar, Österby; desc.: Stockholm, Bukowskis, 15.VI.2011, Lot 318 repr., est. SKr15–18,000). Lit.: Strömborn 1935–43, I, p. 7 φ



J.321.162 Sophia Charlotta REUTERCRONA (1770–1842), pstl, 58x47 ov., sd “Forslund 1788” (Stockholm, Bukowskis, 7.XII.2011, Lot 220 repr., est. SKr12–15,000, SKr26,000) φ



J.321.164 Fru Axel Kristian REUTERHOLM, née Lovisa Charlotta Malm (1768–1845), pstl, 73x61 ov. (Stockholm, Nationalmuseum, inv. NMGrh 2123) φ



J.321.165 Gustaf Adolf REUTERHOLM (1756–1813), pstl, 80x63 (Stockholm, Nationalmuseum, inv. NMGrh 2667. Legs Nils Ädelgren 1959) φ



J.321.166 Fru Johan Daniel RICHNAU, née Charlotta Lovisa Öhrstöm (1776–1837), pstl, ov., c.1795. Lit.: Uggla & Lamm 1935, II, repr. ϕ



J.321.168 Pehr Alexander RUDBECK; & pendant: J.321.169 spouse, née Anna Elisabeth von Axelson, pstl/ppr, 56x46 ov., sd 1789 (Stockholm, Auktionsverk, 5.VI.2003, Lot 2249 repr., est. SKr12–15,000, SKr17,000) ϕ



J.321.172 Gustaf Erik RUTH, pstl, 63x51; & pendant: J.321.173 Hedda Eleonora Ruth, pstl, 63x51 (Stockholm, 30.X.1984, SKr16,000)
J.321.174 David af SANDEBERG (1726–1788), direktör i Svenska Ostindiska Kompaniet; & pendant: J.321.175 spouse [(∞ 1756), née Mary Chambers (1731–1774)], pstl, 28x25.5 ov.

(Stockholm, Bukowskis, 1–4.VI.2010, Lot 232 repr., est. SKr15–20,000) ϕ



??SOFLA ALBERTINA, *prinsessa av Sverige, tenant une lettre* (Helsinki, Finnish National Gallery, inv. S23, attr. Forsslund) [v. *Éc. fr.*]

J.321.177 Friherrinna SPRENGPORTEN, née grevinnan Sofia Lovisa Mörner af Morlanda (1762–1821), pstl/ppr, 70x56, sd “Forsslund 1794” (Överkammarherre Gustaf Celsing, Ulriksdal. Stockholm, Auktionsverk, 8.XII.2016, Lot 3055 repr., est. SKr25–30,000, SKr60,000). Lit.: Strömbom 1939, III, attr. Lundberg ϕ



J.321.179 Pehr A. STROMBERG, pstl, 58x47 ov. (Uppsala, Auktionskammare, 28.III.1992, Lot 308 repr., SKr15,000)

J.321.18 Fru Petter TÖRNGREN (∞ 1811), née Charlotta Elisabeth Koschell (1791–1815), pstl, ov., sd 1793 [?] (Stockholm, Nordiska Museet, inv. NM.0183541. Don Lotten Ewert Sjöberg 1930) ϕ



J.321.182 Grevinna ULFSPARRE af Broxvik, née Anna Charlotta Falkenberg af Bälby, pstl/ppr, 60x47.5 ov., sd 1792 (Stockholm, Bukowskis, 5.XII.2000, Lot 361 repr., est. SKr20–25,000, SKr16,000) ϕ



J.321.184 Fru Olof WALLQVIST, née Adolfina Lovisa Schützerantz (1759–1822), pstl, 41x35 ov. (Stockholm, Nationalmuseum, inv. NMGrh 1901. Acqu. 1917) ϕ



J.321.186 Man, pstl/ppr, 65x54 ov., sd Forsslund 1791 (Wrangel af Sauss, Ellinge, Skane, Stockholm, Bukowskis, 1–3.XII.2015, Lot 2022 repr., est. SwKr20–25,000, b/i) ϕ



J.321.188 Officier suédois, pstl, 57x46 ov. (Christian Hammer; vente, Stockholm 1905, Lot 105. Fritz Ottergren. Stockholm, Auktionsverk, 2.XII.2004, Lot 2275 repr., est. SEK 8–10,000, b/i; Helsinki, Bukowskis, 14–

15.V.2005, Lot 340 repr., est. €2000–2500, €2600) φ



J.321.19 Deux enfants, pstl, 58x43 (Stockholm, Bukowskis, 24–26.XI.1993, Lot 35 repr., est. SKr10,000) φ



Photo courtesy Bukowskis

J.321.193 Dam, pstl, ov., sd 1792 (Stockholm, Nordiska Museet, inv. NM.0230234. Don Idolf Rosengren 1944) φ



J.321.195 Ung kvinna, pstl/ppr, 48x40 ov., sd 1792 (Stockholm, Auktionsverk, 28.XI.2001, Lot 1255 repr., est. SKr15–18,000, SKr10,000) φ

J.321.197 Dam, pstl/ppr, 60x49, sd 1793 (Stockholm, Lilla Bukowskis, 20.V.1996, Lot 167 n.r., est. SKr8000, SKr7200)

J.321.198 Lady, pstl, ov. (Stockholm, Konstakademien)

J.321.199 Dam, pstl/ppr, 58.5x48 (Stockholm, Bukowskis, 24.XI.1999, Lot 360A repr., attr.) φ



J.321.201 Dam, pstl/ppr, 56.5x44.5 ov. (Stockholm, Lilla Bukowskis, 26.VIII.2002, Lot 452 n.r., est. SKr15–18,000, SKr12,000)

J.321.202 Ung kvinna, pstl/ppr, 60x40 ov. (Helsinki, Bukowskis-Hörhammer, 1.XII.2002, Lot 244 repr., est. €1500–1600, €3000) φ



J.321.204 Dam, pstl, 67.5x58 ov. (Stockholm, Auktionsverk, 5.XII.2002, Lot 1609 repr., attr., est. SKr15–20,000. SwKr12,000; Stockholm, Auktionsverket, 27–29.V.2009, Lot 2196 repr., est. SKr15–18,000, b/i) φ



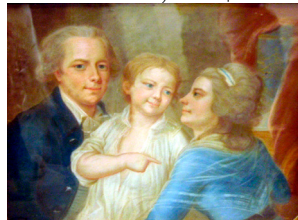
J.321.206 Adelsdam i grön klänning, pstl, 60x49 ov. (Göteborg, Bukowskis; 31.I.2016, attr., est. SKr15,000) φ



J.321.208 Man; & pendant: J.321.209 woman, pstl, 62x51 ov., sd 1800 (Stockholm, Bukowskis, 25–28.XI.2008, Lot 556 repr., est. SKr25–30,000, b/i; Stockholm, Bukowskis, 27.V.2009, Lot 258 repr., est. SKr20–30,000) φ



J.321.213 A family, pstl (Stockholm, Konstakademien). Attr. φa



J.321.215 Three pastels, ov. (Sturhof slot) [new attr.] φ

