

VLEUGHEL, Nicolas

Paris 11.XII.1668 – Rome 10.XII.1737

A member of a family of painters (his father Philippe was a painter from Antwerp, his mother, Catherine, was sister of Nicolas de Platte-Montagne). Vleughels was in Rome from 1703 (where he resided at the Farnese palace), and travelled to Venice in 1707 and c.1711 and to Modena c.1712. He was involved in the sale of the Duke of Mantua's collection, which included Cagnacci's *Martha and the repentant Magdalen* (now in Pasadena), a painting he copied while Rosalba Carriera copied one of the heads in profile; Vleughels's letter to her of 16.XI.1712 (from Modena) evidences their friendship (he sends her a painting, self-deprecatingly noting its deficiencies and adding "vous savez assez peindre à huile pour corriger de pareils ouvrages" (a remark which has since been over-interpreted). He also notes that he expects to receive pastel supplies from France which he will share. On his return to Paris he was *agrégé* in 1715 and *reçu* in 1716. A protégé of the comtesse de Verrue, he was well connected within the French art world: he had known Pierre Crozat in Italy, while Jullienne owned Pesne's portrait of Vleughels, and he is thought to have introduced the connoisseur to Watteau. After Carriera's visit to Paris he arranged for a frame to be made for her *morceau de réception* at the Académie; he assisted her in obtaining pastel crayons there to send to her after her return (letter from Mariette, 22.X.1722); and they remained frequent correspondents. Vleughels acquired a number of her pastels. In 1724 he became directeur de l'École de France in Rome, where he remained until his death twelve years later. In Rome, 20.XII.1731, he married a Marie-Thérèse Gosset (1703–1756). He taught Jeaurat and Subleyras. Mariette was sceptical: "A peine savoit-il dessiner; il ne peignoit guère mieux." He occasionally made pastel studies, and a group of these, formerly belonging to the comte d'Orsay, are now in the Louvre. They relate to paintings made as early as c.1710, predating Rosalba's visit.

Bibliography

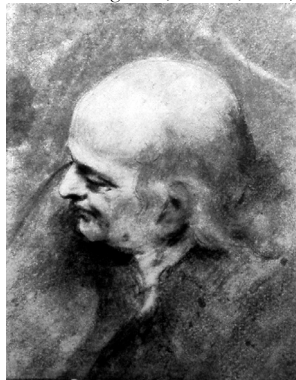
Bataille 1928; Bellier de La Chavignerie & Auvray; Bénézit; Bowron 1980; Burns 2007; Martin Eidelberg, "Vleughels' circle of friends in the early eighteenth century", 2011, watteauandhiscircle.org/vleughels.htm, consulted 17.XII.2014; Füllbi 1826; Gerson 1942; Hercenberg 1975; Mariette 1851–60; Paris 1987c; Paris 2005b; Sanchez 2004; Sani 1985; Thieme & Becker; Tillerot 2010; Toledo 1975; Toutain-Quittelier 2017b

Pastels

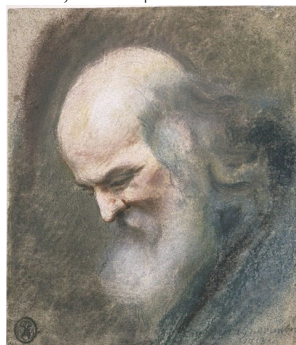
1.771.101 **AUTO PORTRAIT**, pstl, pierre noire, sanguine/ppr chamois, 27.1x21.1 (Louvre inv. 33297. Comte d'Orsay; saisi 1793; Versailles). Exh.: Paris 1987c, no. 62 repr. Lit.: Hercenberg 1975, no. 317; Eidelberg, *op. cit.*, fig. 1; Toutain-Quittelier 2017b, fig. 207 Φσ



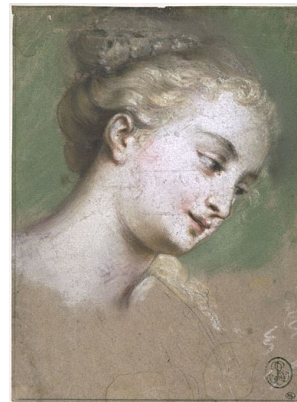
1.771.103 **Tête d'homme à demi-chauve**, pstl/ppr, 26x20.7 (Dijon, mBA, inv. TS 1928. Anthelme & Edma Trimolet; legs Trimolet 1878). Lit.: Hercenberg 1975, no. 306, attr. Φα



1.771.105 **Tête de vieillard**, pstl, pierre noire/ppr gr., 22x21.5, inscr. √ "moden 19 novembre 1713" (Louvre inv. 33296. Comte d'Orsay). Exh.: Paris 1983b, no. 714. Lit.: Hercenberg 1975, no. 305 φ



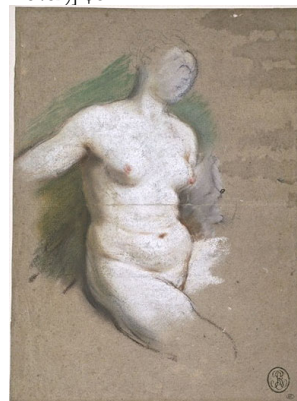
1.771.107 **Tête de femme coiffée de perles**, pstl sur traits de pierre noire et de sanguine/ppr chamois, 23.7x17.5 (Louvre inv. 33296. Comte d'Orsay). Exh.: Paris 1983b. Lit.: *Figaro illustré*, .XII.1906, p. 5; Bataille 1928, I, pl. LXIV; Hercenberg 1975, no. 307. Étude pour la tête de Campaspe dans *Apelle peignant le portrait de Campaspe maîtresse d'Alexandre*, pnt., 1716, *morceau de réception* (Louvre inv. 8482) φσ



1.771.109 **Homme vu de dos et étude de jambes**, pstl, pierre noire, sanguine/ppr chamois, 27.6x22.0 (Louvre inv. 33300. Comte d'Orsay). Exh.: Paris 1983b, no. 724. Étude pour pnt. *Pélerins d'Emmaüs*, c.1716 φ



1.771.111 **Femme nue assise**, pstl, pierre noire, sanguine/ppr chamois, 29.1x20.9 (Louvre inv. 33303. Comte d'Orsay). Exh.: Paris 1983b. Lit.: Hercenberg 1975, no. 308 [Étude pour *Apelle peignant Campaspe*, pnt., 1716 (Louvre inv. 8482)] φσ



1.771.113 **Tête de Minerve**, pstl, pierre noire, sanguine/ppr chamois, 24.8x23.6 (Louvre inv. 33295. Comte d'Orsay). Exh.: Paris 1983b. Lit.: Hercenberg 1975, no. 315 φ



1.771.115 Femme, pstl, pierre noire, sanguine/ppr chamois, 23.4x17 (Louvre inv. 33298. Comte d'Orsay). Exh.: Paris 1963b; Paris 1983b. Lit.: Hercenberg 1975, no. 316 φ



1.771.117 Tête de fillette, pstl/ppr bl., 16.7x14.6 (Louvre inv. 34996. Comte d'Orsay). Exh.: Paris 1983b. Lit.: Hercenberg 1975, no. 412. Attr. φα



1.771.119 Femme à demi-nue sur un nuage, vue de face, tête de profil, les bras étendus, pstl, sanguine/ppr chamois, 31.5x21 (Louvre inv. 34993. Comte d'Orsay). Exh.: Paris 1983b. Lit.: Hercenberg 1975 φ



1.771.121 Tête de jeune fille, fleurs aux cheveux, pstl/ppr, 31x24.5 ([?Armand-François-Louis] de Mestral de Saint-Saphorin [(1738–1805),

diplomate]; desc.; London, Christie's, 10.IV.1985, Lot 84 repr., as Carriera, £2400; Adolphe Stein (1913–2002), cat. 1986, repr., cvr; [his collector's mark, verso, ?L.5019; London, Christie's, 4.VII.2000, Lot 27 repr., as Carriera, est. £15–20,000, b/i; Paris, Christie's, 22.III.2007, Lot 245 repr., circle of Carriera, est. €10–15,000, €9000). Lit.: Paris 2006d, p. 165 repr.; Toutain-Quittelier 2017b, fig. 216. Attr. Φασ

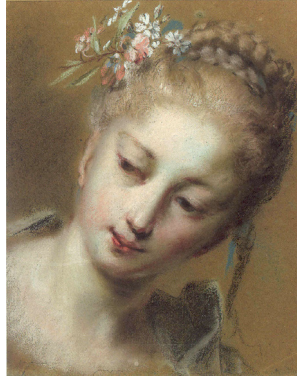
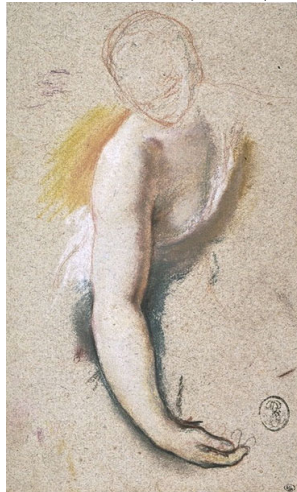


Photo courtesy Christie's
~version (New York, Sotheby's, 10.I.1995, Lot 177 repr.), v. Éc. fr.

1.771.125 Études des jambes, pstl/ppr chamois, 19.4x29.5 (Louvre inv. 33299. Comte d'Orsay; Versailles). Exh.: Paris 1983b; Paris 1987c, no. 63 repr. Lit.: Hercenberg 1975, no. 309; Prat 2017, fig. 102 [Étude pour *Apelle peignant Campaspe*, pnt., 1716 (Louvre inv. 8482)] φσ



1.771.127 Tête et bras de femme, pstl, pierre noire, sanguine, 26.2x15.8 (Louvre inv. 33306. Comte d'Orsay). Exh.: Paris 1983b; Paris 1987c, no. 64 repr. Lit.: Hercenberg 1975, no. 310, as Étude pour la fille de Loth dans pnt. *Loth et ses filles*, 1718; Toutain-Quittelier 2017b, fig. 201, as étude du bras pour la servante de Campaspe dans pnt. *Apelle peignant Campaspe*, 1716; Jeffers 2018a. Étude pour la servante dans pnt. *L'Enlèvement d'Hélène*, c.1710 φ



1.771.129 Deux jambes d'un homme marchant vers la g., pstl, pierre noire, sanguine/ppr chamois, 27.4x21.8 (Louvre inv. 33303. Comte d'Orsay). Exh.: Paris 1983b. Lit.: Hercenberg 1975, no. 311

1.771.13 Femme assise, pstl, pierre noire, sanguine/ppr chamois, 26.2x23.3 (Louvre inv. 33305. Comte d'Orsay). Exh.: Paris 1983b; Paris 2018b. Lit.: Hercenberg 1975, no. 313 φ



1.771.132 Pied nu, pstl/ppr gr., 21.3x32.5 (Louvre inv. 33301. Comte d'Orsay). Lit.: Hercenberg 1975, no. 314 φ



1.771.134 Jambe de femme reposant sur une draperie, pstl sur traits de pierre noire et de sanguine/ppr chamois, 21.3x27.9 (Louvre inv. 33302. Comte d'Orsay). Exh.: Paris 1983b. Lit.: Hercenberg 1975, no. 321 φ



1.771.136 Figure féminine, pstl sur traits de pierre noire et de sanguine/ppr chamois, 31.7x20.8 (Louvre inv. 34993. Comte d'Orsay). Lit.: Hercenberg 1975, no. 338

1.771.137 Vénus servie par les Graces, pstl/ppr; 19.0x27.1 (Paignon Dijonval 1810). Lit.: Bénard 1810, no. 3087

1.771.138 Deux feuilles d'étude: une femme, un bras; & pendant: 1.771.139 une femme, pstl, 52x31/43x31 (J. Masson; Paris, Georges petit, Lair-Dubreuil, 7–8.V.1923, Lot 240/241 n.r., Fr13,800)

Child's hand grasping a visored helmet; & The hands of a child holding a helmet (New York, Christie's, 28.I.2000, Lot 54 repr./n.r., atr. Vleughels) [v. Van Schuppen]

Anon. related pastels

1.771.141 Un repas de buveur, pstl, a/r Vleughels (Jean Valade; inv. p.m., 17.XII.1787, it. 23, 60 livres with others). Lit.: Valade 1993, p. 151