

# Neil Jeffares, *Dictionary of pastellists before 1800*

Online edition

## **TOZELLI, Francesco**

Imola 1749 – Amsterdam 1822

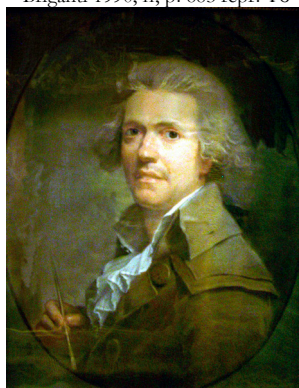
Tozelli, also spelt Toselli, from Imola, moved to Bologna and then settled in Amsterdam around 1793. Apart from the pastel self-portrait (a *morceau de réception* for his admission to the Felix Meritis society), the Rijksmuseum also has a miniature by this little-known artist; several other miniatures are recorded in the rKD database. There are confusions with the work of his son, Felippo Tozelli (1794–p.1835), whose name appears in the baptismal register of the French church in Amsterdam as the son of Philippe-Jacques-Antoine Tozelli and his wife Theresia Ricci. Felippo, also a pastellist, was a pupil of Charles Howard Hodges (*q.v.*), but his work is too late to be catalogued here.

### **Bibliography**

Amsterdam 2018, p. 38f; Bénézit; Briganti 1990, II, p. 883; *Bulletin van het Rijksmuseum*, 1988/3, pp. 177, 258; van der Feltz 1982, pp. 41ff, 346f, s.nos. T13, T14; RKD database; Staring 1948; Thieme & Becker

### **Pastels**

J.725.101 AUTO PORTRAIT, pstl/pchm, 61x48, sd ✓  
“F. Tozelli F./1794” (Rijksmuseum inv. SK-C-543. Felix Meritis society; city of Amsterdam; dep. 1889). Lit.: Thiel 1976; Briganti 1990, II, p. 883 repr. Φσ



*Photo courtesy Rijksmuseum*

J.725.104 Mevr. Jan Pieter van Wickevoort CROMMELIN, née Catharina van Lennep (1766–1847), pstl, 30x25 (Haarlem, Hollandse Maatschappij der Wetenschappen). Lit.: Feltz 1982, no. T22, n.r. (repr. is of Cornelia Willink); rKD n.r.

J.725.105 Johanna Maria NUTGES (1784–1858), pstl, 30x24 (Loenen ad Waal PC). Lit.: rKD n.r.

J.725.106 Maria STAATMANS (1786–1824), pstl, 33.5x28 (Dutch PC). Lit.: rKD n.r.

J.725.107 Arnoud David WILLINK (1783–1854), pstl, 30x24 (Loenen ad Waal PC). Lit.: rKD n.r.

J.725.108 Lady, seated half-length, wearing a green silk dress, pstl, 24x18.5, sd 1822 (Amsterdam, Christie's, 11.XI.1996, Lot 219, est. Df1500–2000, Df2200) [Francesco or Felippo?]

J.725.109 Lady, seated half-length, pstl, 24x18.5 (Amsterdam, Christie's, 11.XI.1996, Lot 218, est. Df1500–2000, Df1200) [Francesco or Felippo?]