

Neil Jeffares, *Dictionary of pastellists before 1800*

Online edition

TOMKINS, Peltro William

London 10.X.1759–22.IV.1840

Prolific engraver and draughtsman. The son of a landscape painter, he enrolled at the Royal Academy Schools on 6.III.1775 at the age of 15 ("10th Oct last"), and was awarded a silver medal in 1777. He was a pupil of Bartolozzi, whose portrait by Russell (*q.v.*) he owned along with that of Tomkins's wife Lucy Jones, whom he married in 1787. His brothers and his daughter Emma, Mrs Samuel Smith, were also engravers. He also engraved several other Russell portraits and a pastel by Downman. He taught the royal princesses, and engraved their designs; he was appointed historical engraver to Queen Charlotte in 1793. The known examples are in mixed media, including coloured chalks and watercolour, and are probably not to be regarded as pastels.

Bibliography

Alexander 2021; Bénézit; Oxford DNB

Pastels

J.721.101 CAROLINE Amalie Elisabeth, Queen of England, née Prinzessin von Braunschweig (1768–1821), pencil, charcoal, pstl/ppr, 24.5x20 (London, Bonhams Knightsbridge, 23.XI.2011, Lot 129 repr., as English sch., est. £600–800; London, Bonhams Knightsbridge, 7.II.2012, Lot 310 repr., as a/r Tomkins., est. £400–600) [new attr.] φνσ



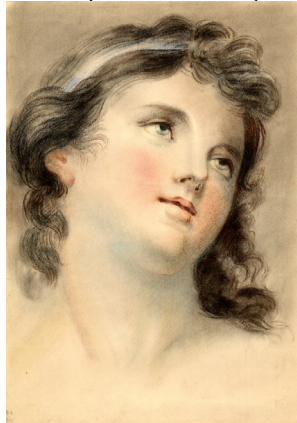
J.721.103 CHARLOTTE Augusta, Princess Royal, later Königin von Württemberg (1766–1828), cr. clr/ 19.4x15.7, [c.1796] (The Maas Gallery, London; acqu. Walter Brandt 1968; desc.: London, Sotheby's, 7–8.VII.2011, Lot 240 repr.; Lowell Libson Ltd 2012) φ



J.721.105 CHARLOTTE Augusta, Princess Royal, later Königin von Württemberg, cr. clr/ppr, 27.1x18.8, c.1796 (British Museum inv. 1890.0512.141. Dr John Percy; London, Christie's, 15.IV.–12.V.1890; J. Hogarth & Sons; acqu. 1890). Exh.: London 1974, no. 314; Edinburgh 2008, no. 177. Lit.: Binyon 1898–1907, IV, p. 198, no. 4 n.r. φ



J.721.107 Head of a girl, looking up, cr. clr, 37.8x26.7 (British Museum inv. 1879.1011.1519. J. Palser & Sons; acqu. 1879). Lit.: Binyon 1898–1907, IV, p. 198, no. 3 n.r. φ



J.721.109 Woman's head in profile, cr. clr, 20x14.2 (British Museum inv. 1879.0712.8. J. Palser & Sons; acqu. 1879) φ



J.721.111 Woman's head, cr. clr, brush and black ink/ppr, 17.4x16.9 ov. (British Museum inv. 1970.0916.1. Dr John Percy; Edward Croft-Murray; don 1970) φ

1970.0916.1. Dr John Percy; Edward Croft-Murray; don 1970) φ

