

# Neil Jeffares, *Dictionary of pastellists before 1800*

## Online edition

### THRUMPTON, T.

*f.l.* London 1662–73

Thrumpton, or Thrumton; little is known about this pupil of Lely. The signed Ashmolean sheet, although widely described as a pastel, has only small touches of colour (as with his master's drawings), but the British Museum drawing dated 5 years later spreads the pastel more evenly.

#### Bibliography

Bell 1915, pp. 6–8; Brown 1982; Croft-Murray & Hulton 1960; London 1987a; Waterhouse 1978; Woodward 1951

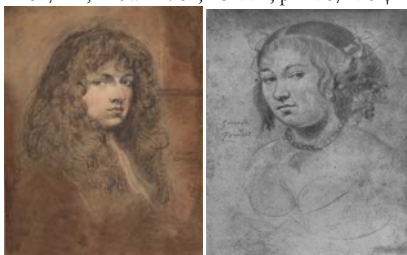
#### Portraits

Young man, black chlk, pstl/buff ppr, 23.5x19, sd “T. Thrumpton fecit/Londini 1667”; *verso*, a portrait of Mrs CARLETON, née Mary Moders (c.1642–1673), bigamist and imposter (Oxford, Ashmolean. Legs Francis Douce 1834). Exh.: London 1934a, no. 1119, no. 545 cat.; London 1938b, no. 130. Lit.: Bell 1915, frontispiece/pl. 1b; Woodward 1951, pl. 52/n.r.; Brown 1982, no. 221, pl. 125/126 φ



*Photo courtesy Sotheby's*

Lady with a pearl necklace, crayons, black wash, pencil, 27.7x22.7, sd ✓ “Trumpton Fe/Londini 1672” (British Museum 1936.0072.1. E. Denney; acqu. 1916). Lit.: Croft-Murray & Hulton 1960, no. 1, pl. 261 φ



MARIA Beatrice d'Este, Mary of Modena (1658–1718), pstl/ppr, 27.7x22.1, s “Trumpton Fecit/Lely Pinxt.” (Dublin, NGI, inv. 6024. Colnaghi; acqu. 1903). Lit.: Le Harivel 1983, repr. A/r pnt. attr. Lely (Suffolk Collection, English Heritage) φ



Unknown man, bl., white chlk, pstl/buff ppr, 22.9x16.6 (Oxford, Ashmolean. Hope; acqu. 1934). Exh.: London 1938b, no. 132. Lit.: Woodward 1951, p. 52 n.r., possibly same hand; Brown 1982, no. 222 n.r., attr.

A clergyman, pstl, 25.5x19.5, sd ?“Thrumpton/.../16...?” (J. Isaacs 1951; T. E. Lowinsky; J. M. E. Lowinsky; London, Sotheby's, 22.XII.1965, Lot 119. Colin Hunter; London, Sotheby's, 11.VII.1991, Lot 24 repr., est. £1500–2000). Lit.: Woodward 1951, p. 52 n.r.; Brown 1982, p. 126, no. 221 φ