

Neil Jeffares, *Dictionary of pastellists before 1800*

Online edition

TEMPESTI, Domenico Marchi

Rovezzano, near Florence c.1655 – Florence
21.III.1737

Domenico Marchi, known as Tempesti (or Tempesta, Tempestino), was a history, landscape and portrait painter. He became the protégé of Cosimo III de' Medici, who initially provided him with the funds to study with Volterrano (*q.v.*), and then sent him to Paris in 1676 to learn engraving and pastel from Nanteuil (*q.v.*). Over the next two years Nanteuil happily imparted many of his secrets to the pupil, who left an account of his master's methods. Tempesti also made a number of copies of his portraits of the French court, several of which are now in the Uffizi but have caused considerable confusions of attribution (the "beliss.mo" portrait of Cardinal Bonzi, the Tuscan representative in Paris, is referred to in a contemporary letter, while d'Aligre and the Louis XIV copy are apparently by the same hand). Following Nanteuil's death, Cosimo III acquired a number of Nanteuil's pastels to serve as models for Tempesti, who went on to produce "bellissimi ritratti al natural e col pastelli" of members of the court from his studio in the granduca's palace. A number of these have been lost, but four remaining from a group of eight in the collection of granduchessa Vittoria at the villa del Poggio Imperiale were identified in 1991. Nanteuil was not the only artist whose works Tempesti copied (e.g. the portraits of Fernando II and Vivarini derive from Sustermans), a fact which impedes the identification of his œuvre. Tempesti's residence in Florence was interrupted from the end of 1689 by a long stay in Rome where he worked with Carlo Maratti. Later, according to Gabburri, the first biographer of the artist, Tempesti travelled widely among the courts of Europe, including London, with Lord Exeter, as well as Ireland, Holland, Düsseldorf (where he made portraits of the Electors, which were well paid; Giorgio Maria Rapparini reported to Rosalba Carriera, in a letter from Düsseldorf of 24.IV.1712, that a "peintre florentin" had arrived at court from England, and that he "fait des portraits au pastel"), Flanders and Paris, before definitively returning to Florence in 1715. He had first been elected to the Accademia there on 9.V.1683, and became console in 1719. Among his pupils was Giovanna Fratellini (*q.v.*); their pastels were exhibited at SS Annunziata in Florence on St Luke's day each year.

Bibliography

Adamczak 2011; Balducci 1691–1728, additions by A. F. Marmi, cited Sani 1985, pp. 17f; Bénézit, *s.v.* Marchi; Borroni Salvadori 1974, pp. 86, 127; Bowron 1980; Briganti 1990; Burns 2007, pp. 44ff; Chiarini 1976; Corsini 1918; *Dizionario biografico degli Italiani*; Furio de Denaro, *Domenico Tempesti: i discorsi sopra l'intaglio*, Florence, 1994; Florence 1977, pp. 175f; Gabburri, *Vite di pittori*, p. 687-II-C095R; Maugeri 1995; Nagler 1835–52; Maxime Préaud, review of de Denaro, *Print quarterly*, XIII/4, 1995, pp. 408f; Ratouis de Limay 1946; Spinelli 1991

Pastels

J.709.101 Cardinale Niccola ACCIAIUOLI (1630–1719), pstl (Marchese Acciaiuoli, Florence, 18th century inv.)

J.709.102 Monsignor ACCIAIUOLI, pstl (Marchese Acciaiuoli, Florence, 18th century inv.)

J.709.103 Étienne d'ALIGRE (1592–1677), chancelier de France, pstl a/r Nanteuil, 54x41 (Uffizi, inv. 1890, no. 2566). Exh.: Florence 1977, p. 175, 223, no. LVI, as a/r Nanteuil. Lit.: Spinelli 1991 n.r.; Jeffares 2006, p.384Ci, as by Nanteuil; Adamczak 2011, p. 234 n.r. ☐



Photo su concessione del Ministero dei Beni e le Attività Culturali; reproduction forbidden

J.709.106 ANNA MARIA LUISA, principessa di Toscana (1667–1743), ∞ Johann Wilhelm von der Pfalz, pstl, 21x15, c.1690 (Florence, villa del Poggio Imperiale). Lit.: Spinelli 1991, fig. 48b ☐



J.709.108 ANNA MARIA LUISA, principessa di Toscana, pstl/ppr, 63x53, 1712 (Uffizi, inv. 1890, no. 4415). Lit.: Langedijk 1981, I, p. 279, no. 60; Spinelli 1991, p. 33 n.r. ☐



J.709.111 Francesco Maria BARTOLINI [Baldelli, senatore, gran contestabile cavaliere di San Stefano, generale delle poste, segretario del Granduca di Toscana Cosimo II], pstl, 59x46, sd verso "Domenico Tempesto Fecit Anno 1700"/"Signor Senator Francesco Bartolini" (Giovanni & Gabriella Barilla; London, Sotheby's, 14.III.2012, Lot 357 repr., with pseudo-pendant, est. £2500–3500, b/i; London, 25 Blythe Road, 17.XII.2012, Lot 1 repr., with pseudo-pendant, est. £400–600. Battle, Burstow & Hewett, 27.II.2013, Lot 111 repr., attr. Liotard, without pseudo-pendant, est. £400–500, b/i; Bourne End Auction Rooms, 7.VIII.2013, Lot 81 repr., anon., unknown, est. £220–280, £220). Lit.: Riccardo Spinelli, "Nuove considerazioni su un pastello di Domenico Tempesti", *Paragone arte*, 127, 2016 ☐



~pseudo-pendant, v. Italian sch.

J.709.114 Pierre de BONZI (1631–1703), cardinal de Saint-Onuphre, archevêque de Narbonne, commandeur du Saint-Esprit 1688, pstl, a/r Nanteuil, 55x42 (Uffizi, inv. 1890, no. 2545). Exh.: Florence 1977, p. 175, 223, no. LV, as a/r Nanteuil. Lit.: Spinelli 1991, fig. 41b, as by Tempesti; Adamczak 2011, p. 234, fig. 18 ☐



Photo su concessione del Ministero dei Beni e le Attività Culturali; reproduction forbidden

J.709.117 Sig.ra CAMPANA (lost). Lit.: Corsini 1918, p. 159

J.709.118 Il conte Lodovico Girolamo CAPRARA, m/u

~grav. Tempesti. Lit.: Spinelli 1991, fig. 46

J.709.12 Il marchese CERBONE DEL MONTE, m/u

~grav. Tempesti. Lit.: Spinelli 1991, fig. 45b

J.709.122 Antonio COCCHI (1695–1758), medico e filosofo, pstl, 1728 (letter Cocchi to Gaetano Berenstadt, 17.VIII.1728, "Il Tempesti finì il

mio ritratto che è riuscito bellissimo”; Raimondo Cocchi). Lit.: Corsini 1918, repr. opp. p. 130 φ



~grav. Gaetano Vascellini (1745–1805). Lit.: Burgess 1973, p. 74

~cop., pnt. (Uffizi, inv. 1890, no. 5192). Lit.: Bertì 1979, P1677 repr.; Maugeri 1995, fig. 7

J.709.126 Le prince de CONDÉ, m/u (Palermo, lost). Lit.: S. Bandera, “Le relazioni artistiche tra Firenze e la Francia...”, *Antichità viva*, XVII, 1978/1, pp. 15, 22, n.64, attr.; Spinelli 1991, p. 47, ?attr.

J.709.127 Abate marchese Neri Maria CORSINI (1685–1770), cardinale 1730, collector, in the full armour of a capitano della guardia dei trabanti, pstl/ppr, 53x43, c.1723 (Palazzo Corsini, Florence). Lit.: Maria Maugeri, “Un ritratto a pastello di Domenico Tempesti della galleria Corsini a Firenze”, *Antichità viva*, XXXIV, 1995, pp. 65–69, as 1723 [?attr.; cf. Fratellini] φ



~cop. *Birouchon, q.v.*

J.709.13 COSIMO III de’ Medici, Granduca di Toscana (1642–1723), half-length, wearing armour and an ermine mantle, 1717

~grav. John Simon

J.709.131 COSIMO de’ Medici, Granduca di Toscana (1642–1723), pstl/ppr, 67.5x53 (Uffizi, inv. 1890, no. 5191, anon.) [new attr., ?] φαβ



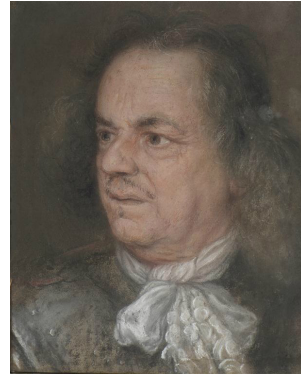
J.709.132 ?~pstl, 62x48 (Narford, inv. 1753, as “Cosmo the 3rd Grand Duke of Tuscany, Crayons, done at Florence. Norfolk; a UK heritage asset). Lit.: Norwich 1985, p. 97

J.709.133 COSIMO III de’ Medici, Granduca di Toscana, pstl, c.1690 (lost). Lit.: Spinelli 1991, n.r.

J.709.134 ?COSIMO III de’ Medici, Granduca di Toscana, en buste, portant l’armure, pstl/ppr, 53x44 (Paris, Drouot, Jean-Louis Picard, 14.X.1992, Lot 45 repr., as Nanteuil, inconnu, H18,500). Lit.: Adamczak 2011, no. R.88, repr. p. 288, as by Tempesti, ?Cosimo φδ



J.709.136 ?COSIMO de Medici; & another gentlemen of the Florentine court, pstl, 34x27.5 (PC 2014; Paris, Drouot, Oger, Blanchet, 27.V.2015, Lot 15 repr., est. €1500–2000, €1600) [new attr.] φδν



J.709.139 Senatore Antonio DEL ROSSO, pstl (Antonio del Rosso, Florence, 18th century inv.)

J.709.14 FERDINANDO II, granduca di Toscana (1610–1670), pstl a/r Sustermans, 21x15, c.1690 (Florence, villa del Poggio Imperiale). Lit.: Spinelli 1991, fig. 47a; Maugeri 1995, fig. 5 φ



J.709.142 FERDINANDO II, 3 pstls, a.1715 (inv. Cosimo III; lost). Lit.: Spinelli 1991, p. 47 n.r.

J.709.143 Gran’Principe FERDINANDO de’ Medici (1663–1713), pstl/ppl, 59x45 (Uffizi, inv. 1890, no. 2521) φ



J.709.145 ~version, pstl/ppl, 56x42 (Uffizi, inv. 1890, no. 2536. Poggio Imperiale 1836, no. 214) φβ



1.709.147 FRANCESCO MARIA de' Medici, cardinal, pstl, 21x15, c.1690 (Florence, villa del Poggio Imperiale). Lit.: Spinelli 1991, fig. 48a φ



1.709.149 Il sacerdote Filippo FRANCI (-1694), fondatore dello Spedale di San Filippo Neri, m/u Lit.: Spinelli 1991, p. 48 n.r.

1.709.15 GIAN GASTONE de' Medici, granduca di Toscana (1671-1737), pstl, c.1690 (lost). Lit.: Spinelli 1991, n.r.

1.709.1501 =pstl, 66.5x50 (Copenhagen, SMK, inv. KMSB 82, as by Rosalba Carriera. Acqu. 1736 [new attr., ?] φα



1.709.151 Maria GIOVANNA Battista di Savoia-Nemours (1644-1724), pstl/ppr, 76.5x52 (Uffizi, inv. 1890, no. 2571=no. 2546, corridoio Vasariano). Lit.: Jeffares 2006, p. 385Bi, attr. Nanteuil [??]; nothing is known of the du Sour named in Nanteuil's engraving; *olim* attr. Fratellini [??]; attr., ?] φα



Photo su concessione del Ministero dei Beni e le Attività Culturali; reproduction forbidden

~grav. Nanteuil a/r Laurent du Sour [Laurent Dufour (-1679), court artist to Carlo Emanuele di Savoia], to right, frontispiece to *Theatrum statuum regiae celsitudinis sabaudiae ducis*, Amsterdam, 1682. (FD 1855; PW 205; Adamczak 2011, no. 256)

1.709.155 Il abate Carlo Antonio GONDI, pstl. Lit.: Spinelli 1991, p. 38 n.r.

1.709.156 Niccolò GUALTIERI (1688-1744), natural historian, pstl (Giuseppe Gualtieri). Lit.: Spinelli 1991, p. 40 n.r., ?attr.

~drawing. Lit.: Spinelli 1991, fig. 50a, attr.

~grav. Carlo Faucci a/r Giuliano Trabellesi. Lit.: Spinelli 1991, fig. 50b

1.709.159 JOHANN WILHELM Herzog von Pfalz-Zweibrücken, Kurfürst von der Pfalz 1690 (1658-1716), pstl, 62x52 (Uffizi, inv. 1890, no. 1697, attr.) φ



1.709.161 [KARL XII] Konung av Sverige [(1682-1718)], a.1715 (inv. Cosimo III; lost). Lit.: Spinelli 1991, p. 47 n.r.

1.709.162 LOUIS XIV, pstl a/r Nanteuil, 54x42 (Uffizi, inv. 1890, no. 2540). Exh.: Florence 1977, p. 175, 223, no. LVII, as a/r Nanteuil. Lit.: Spinelli 1991; Jeffares 2006, p. 385Ci, as by Nanteuil; Adamczak 2011, p. 234 n.r., attr. Tempesti φα



Photo su concessione del Ministero dei Beni e le Attività Culturali; reproduction forbidden

1.709.165 LOUIS XIV, a/r Nanteuil (Uffizi [not verified]). Lit.: Corsini 1918, p. 159; Adamczak 2011, p. 234 n.r., as inv. 1890, no. 3506 [??]

1.709.166 LOUIS XIV, a/r Nanteuil (Uffizi [not verified]). Lit.: Adamczak 2011, p. 234 n.r., attr., as inv. 1890, no. 2011 [??]

1.709.167 LOUIS le Grand Dauphin (1661-1711), pstl, a.1692 (*olim* Florence, Guardaroba Medicea, inv. 1692). Lit.: Florence 1985, p. 49, n.15; Spinelli 1991, p. 33, 43 .25, a/r Mignard

1.709.1675 John Churchill, Duke of MARLBOROUGH (1650-1722), m/u, a.1706 (sent to Cosimo III, letter 9.V.1706; Duke of Marlborough 1706). Lit.: Corsini 1918, p. 159; Spinelli 1991, p. 47 n.r.; De Denaro 1994, p. 37

1.709.168 ?Giovanni Maria PAGLIARDI (1637-1702), sacerdote genovese, maestro di cappella alla corte medicea, sepolto in San Lorenzo, pstl/ppr, 58x43, c.1690 (Uffizi, inv. 1890, no. 2537. Pitti a.1710; Poggio Imperiale 1845; Uffizi). Lit.: *Paragone*, CCCIII, 1975; Chiarini 1976; Berti 1979, Ic578 repr. φδ



Photo su concessione del Ministero dei Beni e le Attività Culturali; reproduction forbidden

1.709.171 Signora Campani PANCIATICHI, pstl/ppr, 59x45 (Florence, state collection, ?Uffizi; inv. 1697) φ



1.709.173 Francesco REDI, medico, m/u ~grav. Lit.: Hangler 1835-52, n.r.; Spinelli 1991, fig. 42a/b

1.709.175 Pieter Paul RUBENS (1577-1640), pstl/ppr, 50x37 (Uffizi; inv. 1890, no. 5317). A/r self-portrait, pnt., 1623 (RCIN 400156) φ



J.709.177 Benedetto SILVA, nègre albinos d'Angola, pstl/ppr, 64x50, inscr. verso "Benedetto Silva d'Angrà moro bianco fatto da Domenico Tempesti Fiorentino" (Uffizi, inv. 1890, no. 2522. Cosimo III de' Medici; Castello 1718; Guardaroba p.1761; Uffizi 1861). Lit.: Corsini 1918; Berti 1979, Ic600 repr.; Bénézit, n.r. Φ



Photo su concessione del Ministero dei Beni e le Attività Culturali; reproduction forbidden

J.709.18 Valerio SPADA (-1688), incisore, pstl, a.1688 (Simone & Francesco Ricoveri 1688). Lit.: Spinelli 1991, p. 38 n.r.

J.709.181 Jacopo Robusti, Il TINTORETTO (c.1518–1594), pstl/ppr, 56x38 [?], c.1690 (Uffizi, inv. 1890, no. 4385. Apollonio Bassetti; Cosimo III de' Medici 1699; Castello 1699; Uffizi). Lit.: Corsini 1918; Berti 1979, A928 repr. Φ

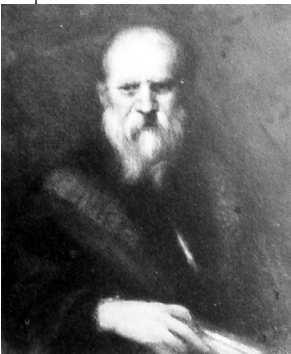


Photo su concessione del Ministero dei Beni e le Attività Culturali; reproduction forbidden

J.709.184 Gesuita TOMMASINI con zimarra, pstl/ppr, 64x53 (Uffizi, inv. 1890, no. 7082) Φ



J.709.186 TITIAN (c.1488–1576), pstl/ppr, 64x53 (Uffizi, inv. 1890, no. 5162). A/r Titian, self-portrait, pnt. (Berlin) Φ



J.709.188 VIOLANTA BEATRIX von Bayern (1673–1731), ∞ Ferdinando de' Medici, pstl, 21x15, c.1690 (Florence, villa del Poggio Imperiale). Lit.: Spinelli 1991, fig. 47b Φ



J.709.19 VITTORIA, granduchessa de' Medici, née della Rovere (1622–1694), pstl, c.1690 (lost). Lit.: Spinelli 1991, n.r.

J.709.191 Vincenzo VIVIANI (1622–1703), matematico della corte medicea, pstl/ppr, a/r Sustermans, 59.5x44, c.1690 (Uffizi, inv. 825). Lit.: Corsini 1918; *Paragone*, CCCIII, 1975; Berti 1979, Ic609 repr.; Spinelli 1991, n.r.; Sani 2007, p. 12, fig. 3 Φ



Photo su concessione del Ministero dei Beni e le Attività Culturali; reproduction forbidden

~grav. Alasson, 33.3x24.0 image, 1690. Lit.: Burgess 1973, no. 3071.1

~grav. Tempesti. Lit.: Spinelli 1991, fig. 44a
Simon VOUET, pstl (Uffizi, inv. 1890, no. 4298, attr. Tempesti), v. L.-R. Vouet

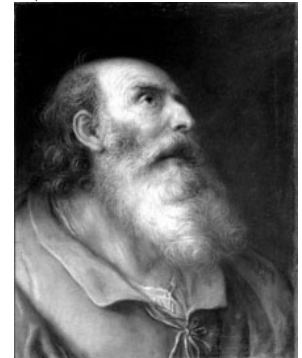
J.709.197 Duchess of YORK, née Anne Hyde (1637–1671), wife of James II, m/u ~grav. Lit.: Nagler 1835–52, n.r.

J.709.199 Uomo francese, pstl/ppr, 54x42, c.1675–80 (Uffizi, inv. 1890, no. 2569). Lit.: Berti 1979, Ic1059 repr., olim attr. Nanteuil; attr. Φ



Photo su concessione del Ministero dei Beni e le Attività Culturali; reproduction forbidden

J.709.202 Vecchio con barba bianca, pstl, 58x45 (Florence, state collection, ?Uffizi; inv. 1697) Φ



J.709.204 Un prelado e un cardinale, Florence 1729 (marchese Ottaviano Acciaiuoli 1729). Lit.: Spinelli 1991, p. 47 n.r.

J.709.205 Un prelado, pstl/ppr, 65x52 (Uffizi, inv. 1890, no. 2531) Φ



J.709.2053 Uomo, pstl/ppr, 61x46 (PC Mexico 1980) Φ



J.709.206 Un magistrat, pstl/ppr, 46x37 (Paris, Drouot, Eric Caudron, 30.IX.2022, Lot 60 repr., éc. fr., est. €80–100) [new attr., ?] φαν



J.709.207 Signora, pstl, 59x44 (Florence, state collection, ?Uffizi; inv. 1697) φ



J.709.209 Una forestiera (*olim* Palazzo Pitti). Lit.: Corsini 1918, p. 159; Spinelli 1991, p. 47 n.r.

J.709.21 Numerous pstls, a/r Nanteuil, a.1679 (Gallerie fiorentine). Lit.: Silvia Meloni Trkulja, *La pittura in Italia. Il settecento*, Milan, 1990, p. 877; Spinelli 1991, p. 48 n.r.

J.709.212 Ritratto, pstl, Florence 1729 (abate Moniglia 1729)

J.709.213 Ritratto, pstl, Florence 1729 (Antonio del Rosso 1729)

J.709.214 Due ritratti, m/u, Florence 1737 (Ranieri Mattei 1737)

J.709.215 Ritratto, m/u, Florence 1737 (Gabburri 1737)