

Neil Jeffares, *Dictionary of pastellists before 1800*

Online edition

Swedish and Norwegian School

Named sitters

J.98.1001 Dame de la famille BRAUN en chapeau de paille, pstl, 66x52 (Stockholm, Bukowskis, 25–28.V.2004, Lot 532 repr., circle of Lundberg, est. SKr30–35,000; Stockholm, Bukowskis, 7–8.VI.2017, Lot 341 repr., est. SKr25–30,000) ☐



Photo courtesy Bukowskis
Busch, v. Stålhandske

J.98.1005 James COLLETT (1655–1727), Kjøpmann og Kommerceråd i Christiania; & pendant:
J.98.1006 spouse, née Karne Leuch (1666–1745), 45x38.5 ov., c.1700 (Oslo Museum, Kat. E.B. 1951) ☐



J.98.1009 ?Mme CRONSTEDT, née Ulrika Christina Löwen (1756–1841), en enfant avec oiseau, pstl, 49.5x40 (Stockholm, Bukowskis, 3–6.XII.2002, Lot 532, Swedish sch., Enfant au oiseau; Stockholm, Bukowskis, 2–5.XII.2003, Lot 445A repr., Swedish sch., *olim* attr. Hall, SKr15–20,000) ☐



Photo courtesy Bukowskis

J.98.1012 GUSTAV III, konung av Sverige (1746–1792), pstl, 59x49, c.1785 (inv.☐)



J.98.1013 Gustf KIERMAN (1702–1766), grosshandlare, pstl/ppr, 64x54, c.1785 (Stockholm, Nationalmuseum, inv. NMGrh 1039) ☐



J.98.1014 Fru Samuel Christoffer Duse, née Sophia von LINNÉ (1757–1830), fourth daughter of Carl Linnæus, pstl/ppr (Hammarby, Uppsala) ☐



J.98.1016 Fru Hans Henric Duse, née Sara Christina von LINNÉ (1751–1835) third daughter of Carl Linnæus, pstl (Gränby, Uppsala Universitets samlingar) ☐



J.98.1018 Syskonen RUTH, Greve Gustaf Erik Ruth (1769–1841); Grevinna Fröhlich née Christina Charlotta Ruth (1771–1825); & Grevinna Falkenberg, née Fredrica Ruth (1774–1829), pstl, c.1785 (inv.☐)



J.98.102 Fru Johan Fredrik SCHÉELE, née Ulrika Geringius, dotter till Anders Geringius (1732–1804), pstl, ov., c.1785 (inv.☐)



J.98.1022 Mme Axel Didrik STÅLHANDSKE (∞ 2°), (∞ 1°) Mme James Maule, née Lorna Busch (1718–1796), pstl, 58x47 ov. (Uppsala Auktions, 9.XII.2001, Lot 54 repr., est. SKr18–22,000) ☐

J.98.1024 Emanuel SWEDENBORG (1688–1772), filosof, teosof, pstl (inv.☐)

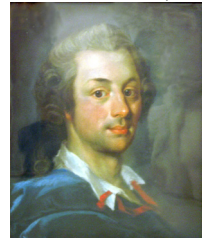


Unknown men – museums

J.98.1027 Man in a red coat, pstl, 53x43 (Oslo, Norsk Folkemuseum. Acqu. 1927) ☐



J.98.1029 Jeune homme, pstl (Stockholm, Konstakademien, Swedish sch., c.1730) ☐



Unknown men – order of appearance

J.98.1032 Tête de vieillard, pstl (Adolf Fredrik; valued 50 dalers). Lit.: Lespinasse 1911, p. 306, no. 23 n.r.

J.98.1033 Man i rød frakke, pstl, 45x36 (Copenhagen, Bruun Rasmussen, 23.II.1999, Lot 224 repr., Swedish sch., est. DKr8000) ☐

Unknown women – museums

J.98.1036 Inconnue, assise, pstl, 53x43 ov. (Stockholm, Nationalmuseum, inv. NMGrh 2306, as circle of Lundberg) φ



Unknown women – order of appearance

J.98.1039 Lady, bust length, in a pale blue dress with the star of an order, in a feigned oval cartouche, pstl, 27.3x22.5 (London, Christie's, 14.IV.1992, Lot 73 n.r., est. £3–500). Swedish sch., c.1780

J.98.104 Jeune femme avec roses aux cheveux, pstl, 38.5x33.5 ov. (Stockholm, Bukowskis, 2–5.XII.2003, Lot 445 repr., as Carriera, SKr20–25,000; Stockholm, Bukowskis, 30.XI–3.XII.2004, Lot 466A repr., est. SKr18–20,000, SKr22,000) φ



Photo courtesy Bukowskis

J.98.1043 Young woman in blue dress, pstl, 45x36 (Uppsala Auction, 27.V.2005, Lot 23 repr., attr. Jonas Forsslund, est. SwKr10–12,000) φ

J.98.1045 Lady in blue dress, pstl, 39.5x32 (Uppsala Auction, 27.V.2005, Lot 24 repr., est. SwKr6–8000) φ

J.98.1047 Dame, pstl, ov. (Schumans Konsthandel, Helsinki, 2009) φ



J.98.1049 Junges Mädchen als Diana, in blauem Corsagenkleid mit Halsband und Pfeil und Bogen, weiß gepuderten Haar blaue Blümchen, Hintergrund weite Landschaft, pstl/ppr, 47x61 (Vienna, Dorotheum, 16.VI.2011, Lot 98 repr., as circle of Liotard, est. €5–7000. Berlin. Leo Spik, 27.III.2014, Lot 266 repr., attr. Liotard, est. €9000) φ



Unknown pendant couples

J.98.1052 Man; & pendant: J.98.1053 Dam, pstl (inv.φ)



J.98.1056 Man, pstl; & pendant: J.98.1057 woman, pstl (Stockholm, Bukowskis, 26.V.2003) φ



J.98.106 Man; & pendant: J.98.1061 woman, pstl/ppr, 66x52 (Stockholm, Auktionsverk, 5.VI.2003, Lot 2250 repr., est. SKr30–35,000) φ

Miscellaneous

J.98.1065 Two pendant landscapes, pstl, 32.5x48.5 (Stockholm, Bukowskis, 30.V.–2.V.2006, Lot 1346 repr., Swedish sch., SKr10–12,000) φ

