

**STANISŁAW I Leszczyński, król polski**

Lviv 20.X.1677 – Lunéville 23.II.1766

Stanislaw Leszczyński (Stanislas Leszczyński) was made king of Poland in 1704 but deposed in 1709; his unsuccessful efforts to recover the throne from 1733 were brought to an end by the Treaty of Vienna in 1738. A generous pension from his son-in-law, Louis XV, permitted a comfortable retirement at Lunéville, where he was duc de Bar et de Lorraine. Here he could pursue his enthusiasms as an amateur author, architect and artist. An account by an anonymous traveller in Lorraine in 1753 gives a description of the king's studio in the château de Chanteheux as well as some of the works displayed at his other residence, Jolivet. He continued painting throughout his life, taking lessons from Lundberg, who no doubt guided the king in making a number of pastels in addition to the miniatures and oils he left. He presented his works to his friends, including Ossoliński, whose inventory of 2.VII.1756 is of interest. His daughter also had his pastel of Démocrite et Héraclite in her apartments at Versailles in 1768; was this a copy of the pendants of L'enjoué Démocrite and Le triste Héraclite by her favourite artist Coypel?

The varying quality of the works and the degree of assistance he received make attributions rather hazardous. Portraits such as that of Charlotte de Bassompierre (sister of his mistress, the marquise de Boufflers) are copied from a print after one of La Tour's pastels, with a new face superimposed. It seems possible that the anonymous portrait of the king wearing armour, which is in a typical Lundberg composition but with execution on a par with Stanislaw's other works, can be attributed to him. The influence of the baroque Italian school is also evident. Voreaux (2003) suggests that the king's better works (e.g. the prince de Hénin) were improved by painters such as Léopold Roxin, Jean Girardet and André Joly.

**Monographic exhibitions**

Stanislaw 2004: *Stanislas: un roi de Pologne en Lorraine*, Nancy, musée Lorrain, 17.XII.2004 – 21.III.2005; as *Stanislaw Leszczyński. Król Polski księciem Lotaryngii*, Warsaw, Zamek królewski, 25.IV.–10.VII.2005. Cat. Andrzej Rottermund, Martine Mathias & al.

**Bibliography**

Beau 1986; Bénézit; Charles-Gaffiot 2003; Grove; Jacquot 1899, p. 493; Marie Leszczyńska 2011; Monnier; Ostrowski 1972; Voreaux 2003; Voreaux 2004

**Pastels**

J.6924.101 AUTOPORTRAIT, pstl, 65x55 ov., c.1760 (Lunéville, musée du château, collections municipales, détruit lors de l'incendie du 1.I.2003). Lit.: *Apollo*, II.1960, fig. 21, as anon.; Charles-Gaffiot & al. 2003, repr. p. 149 as Autoportrait? Φ?α



Photo courtesy musée du château de Lunéville

~cop., miniature, 4x3.2 (Louvre RF 3466, Éc. fr.) [new attr.]

J.6924.105 AUTOPORTRAIT, pstl (PC 2003). Lit.: Charles-Gaffiot & al. 2003, p. 143 repr., Éc. fr. [new attr., ?] φα



J.6924.107 Le père capucin Perret AGATANGE, aumônier du roi, avec un enfant tirant sa barbe, pstl/ppr/toile/châssis, 68x49, 1733, inscr. *verso* "Perfecta haec Imago/Reverendissimi Patris Agatangi Poloniae/Regis Eleemosinarii ab ipso Rege/Stanslao picta, ipsi Patri dono data/ab eodem fratri suo sororibusque suis/concessa fuit anno 1733" (Nancy, musée Lorrain, inv. III.67. Dieuze PC 1860. Legs L. Landart 1909). Exh.: Stanislaw 2004, p. 189 repr. cl. Lit.: *Journal de la Société d'archéologie et du comité du musée Lorrain*, 1861, pp. 61ff; Ostrowski 1972, repr.; Voreaux 2004, no. 11 Φ

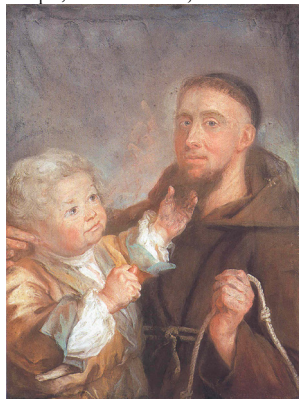


Photo © musée Lorrain, Nancy/photo. C. Philippot

J.6924.108 Le père capucin Perret AGATANGE, pstl, gch., aquarelle (PC 1877–1906). Lit.: Voreaux 2004, no. 13 n.r.

J.6924.111 Charlotte-Nicole de Beauvau-Craon, marquise de BASSOMPIERRE (1717–1787), pstl/ppr, a/r La Tour, 50x35, inscr. *verso* 1757 (Nancy, musée Lorrain, inv. 85-2-1. Rothschild; Torpadie-Bratt 1910; Swedish PC; acqu. 1985). Exh.: Stanislaw 2004, p. 190f, repr. cl. Lit.: Ostrowski 1972, no. 13; *Chronique des arts*, 1986, no. 20 repr.; Beau 1986; Voreaux 2004, no. 19, p. 190f repr. cl. [A/r La Tour, marquise de Semailons, pstl, altérations de visage, à l'envers] Φ



Photo © musée Lorrain, Nancy/photo. P. Mignot

~grav. Petit (FD 1898)

J.6924.115 =? (château de Jolivet 1753). Lit.: Voreaux 2004, no. 19 *bis*  
*Catherine, v. Katarzyna*

J.6924.117 ?Le révérend père Jean-Marie CYPRIEN, pstl, 50x36, inscr. *verso* "Portrait de R. P. Jean-Marie Cyprien (?) sous la figure de Saint François, peint par Stanislas premier, Roy de Pologne, ... donné au couvent des Récollets de Versailles par Marie, Reine de France, sa fille le 30 mars 1767" (Louvre inv. 32865. Château de Jolivet 1753. Marie Leszczyńska, inv. p.m. Versailles, 1768; Louvre inv. 1824, no. 50, as of saint François). Lit.: Nolhac 1928, p. 334; Monnier 1972, no. 81; Voreaux 2004, no. 8, repr. p. 185; Marie Leszczyńska 2011, p. 20 n.r.; Salmon 2018, no. 135 repr.; [Jeffares 2018g](#); Jeffares 2018m φσ



J.6924.119 Nicolas FERRY (1741–1764), dit Bébé, pstl (Nancy, musée Lorrain, inv.95-482. Don baronne Jankowitz). Lit.: Ostrowski, p. 191 attr.; Voreaux 2004, no. 21, repr. p. 187; Jean Granat & évelyne Peyre, "Bébé le nain de la

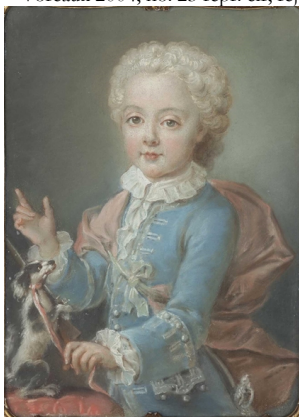
cour de Stanislas Leczinski à Lunéville (XVIII<sup>e</sup> siècle). Son histoire et celle de ses dents”, *Actes de la Société française de l'histoire de l'art dentaire*, XI, 2006, pp. 10–15 repr. A/r pnt. Jean Girardet (Lunéville; détruit 2003)

J.6924.12 =? (inv. Ossoliński, f<sup>o</sup> 244) Φ



Photo © musée Lorrain, Nancy/photo. G. Mangin

J.6924.123 Le prince d'HENIN en enfant [Thomas-Alexandre-Marc, prince de Hénin (1732–1759) ou Charles-Joseph (1744–1794)?], pstl, 39.5x29 (château de Bourlément, Neufchâteau, 1899; desc.: Paris, Christie's, 30.XI.–1.XII.2016, Lot 355 repr., attr., ?Charles-Joseph, est. €6–8000). Lit.: Ostrowski 1972, no. 8; Beau 1986; Voreaux 2003, p. 177, as Stanislaw Leszczyński; Voreaux 2004, no. 23 repr. clr, rejected φα



J.6924.125 KATARZYNA OPALINSKA, królowa Polski (1680–1747), m/u (Paris PC 1974). Lit.: Paris 1974, p. 183 n.r.; Voreaux 2004, no. 9

J.6924.126 La marquise de LA BAUME DE MONTREVEL, née Élisabeth-Charlotte de Beauvau (1705–1787), pstl, 45x37 (PC 2004). Lit.: Nancy 1966; Voreaux 2004, no. 20 n.r.

MARIE LESZCZYŃSKA (1703–1768) en vestale, pnt. (Nancy, musée Lorrain)

J.6924.128 ~version, pstl (Stupinigi, as by Liotard) [new attr., ?] φα



Opalinska, v. Katarzyna

J.6924.131 Antoni OSSOLINSKI (–p.1788), staroste sulejowskiego, kaszteel sandomierski, pstl, sd

1746 (M. L. Gorski, Poland, 1898; lost 1939–45). Lit.: Ostrowski 1972, no. 5 repr.; Voreaux 2004, no. 15 n.r. Φ



J.6924.133 La duchesse OSSOLINSKA [née Katarzyna Jablonowska] en vestale, m/u (inv. Ossoliński, f<sup>o</sup> 245). Lit.: Voreaux 2004, no. 14 n.r.

J.6924.134 Le comte de TALLEMENT, m/u (inv. Ossoliński, f<sup>o</sup> 247). Lit.: Voreaux 2004, no. 17 n.r.

J.6924.135 La princesse de TALMONT, née Marie-Anne-Louise Jablonowska, duchesse de Châtellerault (1701–1773), cousine de Stanislaw Leszczyński, pstl (château de Jolivet 1753). Lit.: Ostrowski 1972, no. 14; Voreaux 2004, no. 18 n.r.

J.6924.136 Le grand bailli de Tihange [THIANGES?], m/u (inv. Ossoliński, f<sup>o</sup> 97). Lit.: Voreaux 2004, no. 16 n.r.

J.6924.137 Ecce Homo, m/u (Polish PC c.1851). Lit.: Ostrowski 1972, no. 15; Voreaux 2004, no. 6 n.r.

J.6924.138 Démocrite et Héraclite, peint par le roi de Pologne, pstl (Marie Leszczyńska, inv. p.m. Versailles, 1768). Lit.: Nollhac 1928, p. 332; Voreaux 2004, no. 3 n.r.; Marie Leszczyńska 2011, p. 20 n.r. [cf. Coypel]

J.6924.139 La Vierge et l'Enfant, pstl/ppr gr-bl./toile/châssis, a/r Van Dyck, 43x33, inscr. verso “Originalny malowany/obraz własna reka M. Króla Jci Polskiego Stanislaw I w prezencje dany J. O. Jmci z Teczyna Ossolińskiemu w Lunéville/24 8<sup>bis</sup> 1741”; “Tableau donné par la Reine [aux dames] de la Congrégation” (Louvre inv. 35058. Stanislaw; Ossoliński; don: 1741. Marie Leszczyńska, inv. p.m. Versailles, 1768; Louvre inv. 1824, no. 21, as anonyme). Lit.: Nollhac 1928, p. 334; Monnier 1972, no. 82; Voreaux 2004, no. 4, repr. p. 184; Marie Leszczyńska 2011, p. 20 n.r.; Salmon 2018, no. 134 repr.; [Jeffares 2018g](#); Jeffares 2018m. A/r pnt. Van Dyck: versions, Munich, Cambridge, Dulwich φσ



J.6924.141 Famille de la Vierge, m/u (inv. Ossoliński, f<sup>o</sup> 245). Lit.: Voreaux 2004, n.r.