

# Neil Jeffares, *Dictionary of pastellists before 1800*

## Online edition

### RUSSELL, John

Guildford 1745 – Hull 1806

#### Part VI: Unidentified sitters &c.

##### Unidentified men – dated

J.64.3077 Gentleman, pstl, 71.1x55.9, sd 1769 (London, Sotheby's, 25.IV.1989, Lot 264, £500)

J.64.308 Old man's head, crayons, Royal Academy 1772, no. 226

J.64.3081 =? (artist's sale; London, Christie's, 14.II.1807, Lot 5, b/i)

J.64.3082 Child in the character of Cupid, pstl, ov., 1773, Royal Academy 1776, no. 269 (artist's sale; London, Christie's, 14.II.1807, Lot 33, as Cupid Feeling his Dart, "this picture was been painted 34 years", £2; Downer. Arthur Powell (1812–1894), glass maker, Milton Heath, Dorning, 1884–94; his son, James Crofts Powell (1847–1914), 13 Charles Street, Grosvenor Place 1913; his son James Jervoise Powell (1888–1955)). Exh.: Guildford 1884, no. 5 n.r.; Russell 1894, no. 65 n.r. Lit.: Williamson 1894, p. 159 n.r. φ



J.64.3084 ~[?cop.], pstl, 46x36 ov. (Dorchester, Duke's, 15.IV.2010, Lot 99 repr., est. £1500–3000, £1900) φκ



J.64.3086 Gentleman in masquerade dress, crayon, Royal Academy 1774, no. 250

J.64.3087 Young gentleman, crayon, Royal Academy 1774, no. 251

J.64.3088 Gentleman, crayons, Royal Academy 1775, no. 260

J.64.3089 Young gentleman reading, crayons, Royal Academy 1775, no. 266

J.64.309 Young gentleman, crayons, Royal Academy 1776, no. 266

J.64.3091 Gentleman, crayons, Royal Academy 1776, no. 268

J.64.3092 J.64.3286 = Young boy, full length, seated wearing a white dress and holding a lamb, pstl, 74x61.5, sd v "J Russell pinxit 1776" (John Gunn, FGS; sale p.m., London, Christie's, 26.IV.1912, Lot 27, 38 gns; Wertheimer; desc.: PC 2019). Exh.: London 1988a, no. 74 repr. φ



J.64.3096 Gentleman, crayons, ov., Royal Academy 1777, no. 308

J.64.30962 Man, pstl, 59.7x44.4, sd 1777 (New York, Sotheby's Arcade, 19.VII.1990, Lot 247 n.r., est. \$3–5000, withdrawn)

J.64.3097 Gentleman, crayons, ov., Royal Academy 1778, no. 260

J.64.3098 Gentleman, crayons, Royal Academy 1778, no. 267

J.64.3099 Young gentleman, crayons, Royal Academy 1779, no. 280

J.64.31 Gentleman in blue coat, pstl, 56x40.6, sd 1782 (London, Sotheby's, 11.VII.1985, Lot 223, £350) [=?Sir Joseph Banks, J.64.1108 *supra*]

J.64.3102 Gentleman, m/u, Royal Academy 1783, no. 1

J.64.3103 Gentleman, m/u, Royal Academy 1783, no. 49

J.64.3104 Gentleman, m/u, Royal Academy 1783, no. 127

J.64.3105 A nobleman, profile, crayons, ov., Royal Academy 1784, no. 97. Lit.: Graves 1905, "visible in Ramberg's drawing"

J.64.3106 Gentleman, crayons, Royal Academy 1785, no. 440

J.64.3107 Young boy in a blue coat, holding a book, pstl/ppr, 60x44.5 ov., inscr. → "J R pt/1785" (London, Sotheby's, 13.VII.1989, Lot 72 repr., est. £1000–1500, £1540. New York, Stair Galleries, 30.IV.–1.V.2016, Lot 305 repr., attr., est. \$1200–1800; Townley Hall, Co. Louth, Adams, 11.X.2016, Lot 542 repr., as by Russell, est. €1500–2500, €1400; English PC 2023) [?attr.] φ?α



Photo courtesy Sotheby's

J.64.311 A nobleman, crayons, Royal Academy 1786, no. 150

J.64.3111 Gentleman in blue coat with brass buttons, black and white stock, powdered hair, pstl, 59x44.5 ov., sd 1786 (London, Christie's, 15.IV.1912, Lot 23, 34 gns; Grant)

Gentleman in a brown coat, pstl, 44.5x33.6, inscr. JR 1786 (Carlisle, Thomson Roddick & Medcalf, 25.VIII.2016, Lot 12 repr., est. £200–300) [?attr.: v. English sch.]

J.64.3112 A mahomet summy, pstl, 61x41 [?76.2x61.0], Royal Academy 1787, no. 450 (Guildford House. Artist's sale; London, Christie's, 14.II.1807, Lot 73, "beautifully executed", 3 gns; Charles Jones; desc.: his great-grandson, Rev. Charles Percy Jones (1868–1942), Willesden, 1894; his cohabitee, Mrs Lottie Smeed (1869–1955); her daughter, Mrs Alfred Edwin Jackson, née Marion Gwendoline Smeed (1893–1983); offered to museum, and acquired on its behalf by Lawrence Powell 1955). Exh.: London 1906, upper gallery, no. 54; Paris 1911, no. 139; Russell 2006. Lit.: Anon. 1787d, as of Mahomet Summy, proper name; Williamson 1894, p. 149 n.r., as a foreign ambassador φσ

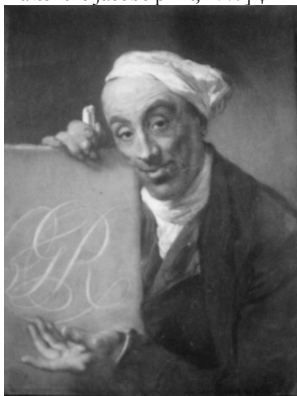


Photo courtesy Guildford House Gallery

J.64.3115 An officer of the 1st Bolton Volunteers, in scarlet coat with blue facings, white stock, powdered hair, pstl, 59x44.5 ov., sd 1787 (London, Christie's, 15.IV.1912, Lot 22, 34 gns; Grant)

J.64.3116 The [famous] chalk writer [of the Piazza, Covent Garden], pstl, 61x46, sd 1788, ?Royal Academy 1789, no. 154 (artist's sale; London, Christie's, 14.II.1807, Lot 72, "the character and effect uncommonly fine", b/i; desc.: H. Webb 1894; don: his son Leonard George

Webb; acqu. his brother F. H. Webb, £100; acqu. Asher Wertheimer 1909, with Felina, £190). Lit.: Williamson 1894, p. 170 n.r. [composition repeats Romney's portrait of William Hayley, c.1777 (Kidson 635), probably after the Jacobé print, 1779] φ



J.64.3118 ~cop, pstl, gch./ppr, 45.5x39.5 (London, Courtauld Institute, D.1945.XX.3. Dr, later Dame, Joan Evans (1893–1977); don 1945). Exh.: London 2015a. Lit.: Kit Wedd & al., *Artists' London: Holbein to Hirst*, 2001, fig. 66; Treadwell 2009, p. 417 repr., noting similarity with pnt. erroneously identified as Zoffany's portrait of Edward Townsend; Francesca Whitlum-Cooper, "The chalk writer", unpublished manuscript, Courtauld Institute, 2009; all as autograph [?] φσ



~grav., mezzotint. Lit.: W. H. Pyne, *The world in miniature: England, Scotland, and Ireland*, London, 1827, iv, p. 240ff n.r.; not in Chaloner-Smith ~?cop. W. Patten, min., "The Chalk-writer", Royal Academy 1791, no. 368

J.64.3121 Gentleman in a blue coat, holding a book, red curtain background, pstl, 60x43, sd 1799 or "J Russell RA 1789" (Houghton; a UK heritage asset. =?Sir Philip Sassoon; London, Christie's, 27.IV.1934, Lot 98 n.r., 45 gns; Wightman)

J.64.3122 Gentleman in a blue coat, pstl, 61x45.7, sd 1789 (Guildford House). Exh.: Russell 2006 φσ



J.64.3124 Man [?Godfrey Thornton (1737–1805)], pstl/ppr, sd → "J. Russell Pict/1789" (UK Government Art Collection GAC 2296; dep.: UK Mission to United Nations, Geneva, 2011. Claude D. Rotch; don 1953) φ



J.64.3126 Portrait of a gentleman, m/u, Royal Academy 1789, no. 421

J.64.3127 Portrait of a gentleman, m/u, Royal Academy 1789, no. 426

J.64.3128 A Dutch beggar, Royal Academy 1789, no. 256

J.64.3129 Gentleman, m/u, Royal Academy 1790, no. 453

J.64.313 Gentleman, m/u, Royal Academy 1790, no. 465

J.64.3131 Gentleman in a blue coat with red waistcoat, pstl, 61x45.7, sd ↖ "J Russell RA/1790" (Haslemere, John Nicholson, 9.III.2016, Lot 244 repr., est. £1500–2000; Haslemere, John Nicholson, 15.VI.2016, Lot 239 repr., est. £800–1200; Bourne End Auctions, 2.XI.2016, Lot 202, est. £700–750; Watlington, Jones & Jacob, 14.XII.2106, Lot 457 repr., est. £700–900) φ



J.64.3133 A naval officer, m/u, Royal Academy 1791, no. 51. Lit.: Williamson/Webb, p. 114, =? Admiral Affleck

J.64.3134 A grateful Turk merchant, m/u, Royal Academy 1791, no. 183

J.64.3135 An English boor, m/u, Royal Academy 1792, no. 381

~cop. W. Russell, q.v.

J.64.3136 American captured by the Algerines, m/u, Royal Academy 1792, no. 387

J.64.3137 =?The Algerine prisoner [?from Royall Tyler's *The Algerine captive*, 1797] (artist's sale; London, Christie's, 14.II.1807, Lot 119, 2½ gns; Smart)

*Gentleman in a blue coat, inscr.* ← "J Russell RA/1793" (London, Bonhams, 25.VI.2002, Lot 112 repr., as by Russell; London, Bonhams, 29.I.2007, Lot 682 repr.) [v. English sch.]

J.64.3139 Love songs and matches, pstl/ppr, 90.2x68.6, Royal Academy 1793, no. 321 (Bath, Holburne Museum, A366. Rev. F. A. Bowles

1894. [?Henry Graves & Co., London, according to label, verso.] J. Wentworth Smith; London, Christie's, 14.XII.1928, Lot 69 repr., 620 gns, Gooden & Fox for Ernest Edward Cook; legs). Exh.: Bath 1977, no. 111 n.r.; Bath 1991, no. 31; Nottingham 1998, no. 65 repr.; Bath 2016. Lit.: Williamson 1894, p. 137 n.r.; *Apollo*, v.1991, repr. p. 352; Philippa Bishop & Barley Roscoe, *Holburne of Menstrie Museum and Crafts Study Centre Bath: A guide to the collections*, pp. 18f φσ



Zoomify

Photo courtesy The Trustees of the Holburne Museum of Art, Bath

J.64.31391 ~cop., pstl, 70x57 (J. Davy & Sons label verso. Cheshire, Adam Partridge, 20–21.IX.2018, Lot 1617 repr., manner of Russell, est. £200–400, £160. Stansted Mountfitchet, Sworders, 22–23.IX.2020, Lot 571 repr., est. £600–800, £3200; English PC 2023) φσ



J.64.3142 Gentleman, m/u, Royal Academy 1794, no. 108

J.64.3143 Gentleman, m/u, Royal Academy 1794, no. 216

J.64.3144 Gentleman, m/u, Royal Academy 1794, no. 415

J.64.3145 Young man [?of the Sydenham family] in a blue coat, pstl/ppr, 74x61, sd ↖ "J. Russell R.A./1794" (D. C. Yule; sale p.m., London, Christie's, 7.VI.1912, Lot 54, 100 gns; Asher Wertheimer; desc. Mrs Joan Conway; London, Sotheby's, 22.III.2000, Lot 95 repr., est. £4–6000, £5200 [=£5980]; PC; London, Sotheby's, 4.XII.2008, Lot 110 repr., est. £4–6000, b/i) φσ



Photo courtesy Sotheby's

J.64.3148 Gentleman in brown, m/u, 59.7x44.5, 1794 (London, Christie's, 30.VI.1906, Lot 66, 210 gns; Agnew)

J.64.3149 Gentleman, m/u, Royal Academy 1795, no. 354

J.64.315 Gentleman in a brown coat, pstl, 1795 (Guildford House. Acqu. 1983). Exh.: Russell 2006 φσ



J.64.3152 [=J.64.3462] Charles with his cat, pstl, 61x46, sd 1797, Royal Academy 1797, no. 526 (artist's sale, London, Christie's, 14.II.1807, Lot 87, "capital", b/i. Sir William Lawrence, 75 Lancaster Gate, 1894. London, Christie's, 15.XI.1946, Lot 4 with pendant, the sisters; Dale). Lit.: Williamson 1894, p. 151; Whatley 1928, II, p. 394, improbably identified as ?Charles Cranmer, "a portrait of honest Charles, the porter at the Academy, and formerly one of the living models from whose anatomy we have often drawn", according to the *Morning post* φ



Photo courtesy Christie's

J.64.3153 Gentleman, crayons (William Kempe, Esq.; London, Christie's, 9–11.V.1798, Lot 55, as by Russell, 5 gns; Iredale)

J.64.3155 'The loiterer, Royal Academy 1799, no. 199 (artist's sale; London, Christie's, 14.II.1807, Lot 105, 7 gns; Russell)

J.64.3156 ~sketch, watercolour. Lit.: Webb 1910, repr.

J.64.3157 [=J.64.3158] The warren's boy with a ferret, painted with a glow of health, and designed in the genuine simplicity of nature, pstl, 59.5x44.5, sd ✓ "JRussell RA/pinx 1799", Royal Academy 1799, no. 377 (artist's sale, London, Christie's, 14.II.1807, Lot 121, 11½ gns; Baron Thompson [?Sir Alexander Thompson (1745–1817), Lord Chief Baron of the Exchequer]. London, Christie's, 14.III.1978, Lot 121 repr., £500. Lady Duveen; sale p.m., London, Christie's, 20.III.1984, Lot 66 repr., est. £2–3000; desc.: London, Sotheby's, 29.VII.2020, Lot 259 repr., est. £2–3000, £30,000). Lit.: Williamson 1894, p. 116, 122, erroneously as with Mrs Holesgrove 1894 (p. J.6352.101) φ



~cop. Henrietta Russell, q.v. J.6352.101

~grav. Parcy

J.64.3159 ~cop. XX<sup>s</sup>, pstl/ppr, 60.5x44.5 (Engiennes-Bains, Goxe, Beläisch, 15.X.2022, Lot 119 repr., with pendant J.64.3386, as autograph, est. €1500–2000, withdrawn) φκν



J.64.3163 Gentleman in a blue coat, holding a book, pstl, 75.5x62, 1802 (London, Sotheby's, 16.VII.1981, Lot 71 repr., £500; PC; Folkestone, Grand Auctions, 21.II.2022, Lot 80 repr., est. £2–3000; Folkestone, Grand Auctions, 19.IX.2022, Lot 225 repr., est. £1–2000; Hythe, Hogben, 3.XI.2022, Lot 23 repr.) φ



J.64.31635 Gentleman in a dark brown coat with yellow waistcoat, pstl/ppr, 75x62, sd ✓ "JRussell RA pinxit/1805" (PC; New York, Christie's, 28.I.2021, Lot 79 repr., est. \$7–10,000, \$10,000) φ

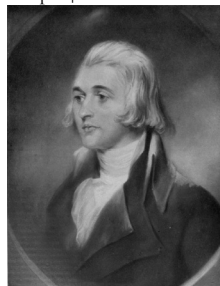


J.64.3164 'The sailor's orphan, whose father was blown up in the *Queen Charlotte*, Royal Academy 1806 (artist's sale, London,

Christie's, 14.II.1807, Lot 88, "the last fancy picture painted by Mr Russell", 1½ gns; Spackman)

### Unidentified, undated men – museums

J.64.3166 Young gentleman, pstl, 60x45 (Brighton & Hove Museums & Art Gallery, inv. 101807, as a/r John Russell. Willett; acqu. a.1911). Exh.: Paris 1911, no. 131. Lit.: See 1911b, p. 25 repr. φπ



J.64.3168 Jeune berger, pstl, 45x35 (Chalais, abbaye royale, fondation Jacquemart-André, inv. 2203, \$1394. Earl Delaware, Buckhurst; Wertheimer; 31.V.1899, H1200). Exh.: Chantilly 2004b, no. 104. Lit.: Dorange 2010, no. 63 repr. φσ



Photo courtesy Institut de France

J.64.3172 Man in blue coat with red collar, pstl, 61x48.3 (Guildford House. Acqu. 1988). Exh.: Russell 2006 φσ



Chorister at Stoke Church, near Guildford, wearing surplice and holding hymnal, pnt., 100.3x63.5, sd 1781 (Sir John Foley Grey, Bt; London, Christie's, 15.VI.1928, Lot 98; 85 gns; Abrahams)

J.64.3174 ~version, pstl, 61x46, sd 1781, [?]Royal Academy 1782, no. 47 (Guildford House. London, Christie's, 14.XI.1989, Lot 56 repr., £480 [=£528]. London, Sotheby's Colonnade, 3.II.1993, Lot 132, £420; acqu. 1993 with funds from Friends of Guildford House and Beecroft bequest). Exh.: Russell 2006 φβσ



~version, min., Royal Academy 1781, no. 436  
~grav. Webb 1910 repr.

J.64.3179 Man in a blue coat, pstl, 60.3x45.1 ov. (Leeds, Temple Newsam House, inv.8.3/34. Legs Miss M. Urquhart 1934) [attr.] φ?α



J.64.318 Barrister, pstl, 62x46 (London, V&A, P.56-1962. Claude D. Rotch; legs 1962). Lit.: Lambourne & Hamilton 1980, n.r. φσ



J.64.3182 Man in a blue coat, pstl, 73.8x63.5 (London, V&A, P.33-1952. Don Claude D. Rotch through NACF 1952). Lit.: Lambourne & Hamilton 1980, n.r.; Michael Snodin & John Styles, *Design & the decorative arts: Georgian Britain 1714–1837*, London, 2004, p. 133 repr.. One of Russell's slick productions, impressive but rapidly executed] φσ



J.64.3184 Man wearing wig, crayon, 26.8x22.9 (London, V&A, 113-1890. Don Sir Edwin Durning-Lawrence, Bt). Lit.: Lambourne & Hamilton 1980, n.r.φσ



J.64.3186 Man, crayon, 31.8x25.4 (London, V&A, 115-1890. Don Sir Edwin Durning-Lawrence, Bt). Lit.: Lambourne & Hamilton 1980, n.r. φσ



J.64.3188 Gentleman, pstl, 34.8x28.2 (Oxford, Ashmolean, inv. WA 1958.57.13. London, Christie's, 12.II.1932, Lot 41 part; Archibald George Blomefield Russell; legs 1958). Lit.: Brown 1982, no. 1644 φσ



**Unidentified, undated men – order of appearance**

J.64.3191 Peasant (artist's sale, London, Christie's, 14.II.1807, Lot 8, b/i)

J.64.3192 Boy's head (artist's sale, London, Christie's, 14.II.1807, Lot 12, £1/10/-; Russell)

J.64.3193 Narcissus, ov. (artist's sale; London, Christie's, 14.II.1807, Lot 60, "treated with elegant taste", 4 gns; Thompson)

J.64.3194 Boy with a letter (artist's sale; London, Christie's, 14.II.1807, Lot 82, "fine effect in the chiaroscuro", £2/10/-; Revely)

J.64.3195 Porter at Leeds Cloth Hall, admirably painted from life (London, Christie's, 14.II.1807, Lot 47, 2 gns; Bellamy)

J.64.3196 The infant St John, pstl sketch (John Hooke, 1884–94). Exh.: Guildford 1884, no. 30 n.r. Lit.: Williamson 1894, p. 148 n.r.

*Head of a young man, pstl, unfinished* (Sir William Jenner, 1894). Lit.: Williamson 1894, p. 149 n.r. [v. Liotard]

J.64.3198 Two boys, pstls (Mrs Cochrane, Swakeley-by-Uxridge, 1894). Lit.: Williamson 1894, p. 139 n.r.

J.64.3199 Head of an unknown man, pstl, ov. (Upperton Lear, Littlehampton, 1894). Lit.: Williamson 1894, p. 152 n.r.

J.64.3201 Young gentleman, pstl, ov. (Maria Tippinge 1894). Lit.: Williamson 1894, p. 167 n.r.

J.64.3202 Child holding a beaver hat over a large dog, pstl, 1797 (Duke of Leinster, Carton, Maynooth, 1894). Lit.: Williamson 1894, p. 152 n.r. φ



J.64.3203 Man in a brown velvet coat and grey wig, pstl (George D. Gould, Bellefield House, Sandal, Wakefield 1894). Lit.: Williamson 1894, p. 145 n.r.; Williamson/Webb

J.64.3204 Officer in a scarlet uniform, pstl, 61x46 (Jeffery Whitehead, Southwood, Bickley, Hampshire, 1894. PC 2020). Exh.: London 1889b, no. 206 n.r.; Russell 1894, no. 112, as ?Capt. William Harvey [?; eye colour differs]. Lit.: Williamson 1894, p. 171 n.r. φ



J.64.3206 Soldier of the Westminster Cavalry, in blue coatee with red facings, bearskin/shako, Windsor Castle in background. Lit.: undated handcoloured photo in Royal Collection (RCIN 760376)

J.64.3207 Officer, head, pstl, study (Sir Edwin Durning-Lawrence). Lit.: Webb 1910, repr. φ



J.64.3209 Boy, head, pstl, study (Sir Edwin Durning-Lawrence 1894). Lit.: Webb 1910, repr. φ



J.64.3211 Boy, head, pstl, 21x19 ([?Ludwig] Neumann [collector and racehorse owner] c.1910 Billingshurst, Bellmans, 5–7.IX.2012, Lot 412 repr., as follower of Russell, est. £120–180, £100). Lit.: Webb 1910, repr. φ



*Officer in armour, with a blue sash and baton, (Jeffery Whitehead, Southwood, Bickley, Hampshire). Lit.: Williamson 1894, p. 171 n.r. [v. a/r Tocqué, Charles Edward Stuart]*

J.64.32143 Boy with oak leaves, pstl (County Court, Oxford, 1894, in re *Mallam and Lucas v. Russell*; London, Christie's, 9.III.1895, Lot 76 n.r., 12 gns; E. M. Hodgkins)

*Gentleman in wig, pstl, 33x26 ov. (Berlin, 22.I.1908, Lot 32 repr.) [v. German sch.]*

*Gentleman in hat, pstl, 33x26 ov. (Berlin, 22.I.1908, Lot 34 repr.) [v. German sch.]*

J.64.3219 Head of a saint reading, pstl, 63.5x51 (London, Christie's, 20.II.1909, Lot 78, 2½ gns; Mace; London, Christie's, 5.IV.1909, Lot 18, 10/6; Goode)

J.64.322 Man (Bishop Thicknesse 1909). Exh.: Russell 1909, no. 29

J.64.3221 Man (Bishop Thicknesse 1909). Exh.: Russell 1909, no. 31

J.64.3222 Little boy (Mrs T. H. Mason 1909). Exh.: Russell 1909, no. 38

J.64.3223 Gentleman (Captain A. Pepys 1909). Exh.: Russell 1909, no. 50

J.64.3224 The country doctor, 59x43 (don: Charles Jones; desc. C. P. Jones 1894–1911; London, Christie's, 23.VII.1915, 81 gns). Exh.: Paris 1911, no. 138. Lit.: Williamson 1894, p. 149 n.r.

*Homme en habit bleu barbot, lisant (Pierre Decourcelle; Paris, Georges Petit, 29–30.V.1911, Lot 155 n.r.) [v. British sch.]*

J.64.3227 The dog's first sight of himself, pstl, a.1797 (Schiavonetti; London, Christie's, 22–23.VII.1814, with pendant, Betsey in trouble; Carton, Maynooth, 1918). Lit.: Williamson 1894, p. 152, repr. opp. p. 88; Sée 1918 φ



~grav. Niccolo Schiavonetti, stipple, 31.5x38, 1797. Exh.: Nottingham 1998, no. 31 repr.

J.64.323 Gentleman in blue with powdered hair, pstl, 91.5x71 (Ernest Schwabacher; London, Christie's, 7.V.1906, Lot 84, 95 gns; Colnaghi)

J.64.32305 Halbfigur eines Hirtenknaben mit seinem Hunde. Er bläst die Schalmel, pstl, 63x53 (Berlin, Lepke, 22.III.1910, Lot 63 n.r.)

J.64.3231 Gentleman in blue coat, white vest and stock, powdered hair, pstl, 59x43 ov. (London, Christie's, 15.IV.1912, Lot 24, 10 gns; Ellis)

J.64.32315 Gentleman in a plum-coloured coat, white stock, powdered hair, pstl, 59x43 ov. (William Lowther; sale p.m., London, Christie's, 10.V.1912, Lot 4 n.r.)

J.64.3232 Gentleman in grey coat with black cocked hat and white wig, pstl, 60x44.5 (Rev. T. Russell; London, Christie's, 25.VII.1913, Lot 7, 27 gns; Robinson & Farr)

J.64.3233 Gentleman in blue coat, pstl (London, Christie's, 28–30.VII.1913, Lot 462, £6; Berkin)

J.64.3234 Boy in blue coat, white fichu, pstl, 57x43 (Jeffery Whitehead; London, Christie's, 6.VIII.1915, Lot 55, 8 gns; Renton)

J.64.3235 Several unidentified male heads (Sir Edwin Durning-Lawrence 1894). Lit.: Sée 1920, p. 165 repr.

J.64.32352 ~one of these, man in red coat, striped waistcoat, pstl/ppr, 35.2x27.3 (New Haven, Yale Center for British Art, inv. B1979.27. Sir Edwin Durning-Lawrence 1894. Acqu. 1979). Lit.: Sée 1920, p. 165 repr. top left φ



J.64.3236 ~one, lower right

J.64.3237 ~pstl, 25.4x11.4, irregular (Squire Gallery; acqu. .VII.1939 Sir Brinsley Ford). Lit.: *Walpole Society*, LX, 1998, p. 237, no. RBF356 n.r., as head of an officer

J.64.32375 The faggot gatherer, pstl, 66x51 (London, Sotheby's, 26.II.1919 & seq., Lot 179 n.r.)

J.64.32377 Gentleman in a blue coat, red vest and white cravat, pstl, 63.5x51 (Isaac Lewis; Bedgebury, near Goudhurst, Kent, Knight, Frank & Rutley, 12.V.1919 & seq., Lot 30 n.r.)

J.64.3238 Gentleman in a brown coat with gold buttons, white stock, powdered hair, pstl, 58.5x44.5 ov. (??London, Christie's, 24.II.1922, Lot 19, 75 gns; Mason)

*Homme en habit bleu, pstl, 62.5x51 (Paris, Georges Petit, 13.III.1922, Lot 18 repr., as by Russell) [v. Humphry]*

J.64.3241 Gentleman in a blue coat, pstl, 65x51 (London, Sotheby's, 14.VI.1922, Lot 2, £3; Gray)

J.64.3242 Gentleman in a blue coat, pstl, 61x46 (Sir Edward Coates; London, Sotheby's, 22.VI.1922, Lot 3 n.r., £50)

J.64.3243 Two boys in crimson coats, with a dog, pstl, 58.5x46 (London, Christie's, 28.VII.1922, Lot 65, 11 gns; Belhaven)

J.64.32435 Gentleman in red coat, with tall black hat, pstl, 57x49.5 (London, Christie's, 30.VI.1924, Lot 8 n.r., 2½ gns; Maitland)

*Gentleman, in pink coat, yellow vest, white stock, pstl (London, Christie's, 25.VII.1924, Lot 28) [v. English sch.]*

J.64.3244 Gentleman in blue coat, with powdered hair, pstl, 60x49.5 (London, Christie's, 29.VI.1928, Lot 4 n.r., 23 gns; Wall)

J.64.3245 Gentleman in brown coat, half-length, turned to left, pstl, 61x44.5 (London, Sotheby's, 7.II.1929, Lot 76B n.r., £22; Dodd)

J.64.3246 A divine in gown and bands, pstl (London, Willis's, 7.II.1929, 6 gns; R. Warner) *Man, turned to left, pstl, 63.5x43 (J. Leger, London). Lit.: Connoisseur, LXXXIII, .II.1929, p. 330 repr., as by Russell, v. Humphry J.41.3525*

J.64.3247 Gentleman in brown coat, white stock, pstl, 61x44.5 (London, Christie's, 1.VIII.1929, Lot 80 n.r., 21 gns; Parsons) [?=*J.64.3245*]

J.64.32475 Young man, study, pstl, 28x22 (London, Sotheby's, 19.II.1930, Lot 87 n.r., £2; Meatyard)

J.64.3248 Man's head, ¾ to left, charcoal, pstl, 28.5x25.5 (Lady Holford, London, 1934). Exh.: London 1934a, no. 814

J.64.325 Gentleman in brown coat, white stock, pstl, 58.5x44.5 (T. S. Pearson-Gregory; sale p.m., London, Christie's, 18.VI.1937, Lot 3 n.r., 20 gns; Gooden & Fox)

J.64.3251 Gentleman (New York, 21.X.1937, \$370)

J.64.3253 Gentleman (New York, 14–16.I.1943, \$450)

J.64.3254 Gentleman, dark coat, red collar, white stock, pstl, 59.7x42 ov. (London, Christie's, 17.XI.1944, 28 gns; Weingraf)

J.64.3255 Head of a man, pstl, 33.0x25.4, c.1790 (Sir Edwin Durning-Lawrence. Sir Leonard Twiston-Davies, Rockfield Park, 1951; W. A. Twiston-Davies, Llangunville, Llanrothal, Monmouthshire, 1957). Exh.: Cardiff 1951, no. 75 n.r. Lit.: Steegman 1962, p. 148 n.r. φ



1.64.3256 Jeune garçon lisant une lettre, pstl, 64x50, inscr. "Yorkshire" (Paris, Galliera, Rheims, 21.VI.1963, Lot 29 n.r., H1900). Lit.: Dorange 2010, no. 40 n.r.

1.64.3257 Young boy, pstl, 36x28.5 (London, Sotheby's, 5.III.1970, £45)

1.64.3258 Officer of fencible cavalry standing in landscape, pstl, 58.4x43.2 (London, Christie's, 8.VI.1976, Lot 84, £450)

1.64.3259 Boy [George King or G. A. Aufrère] holding a cricket ball, pstl, 61x46 (London, Sotheby's, 30.XI.1978, Lot 162, £1400)

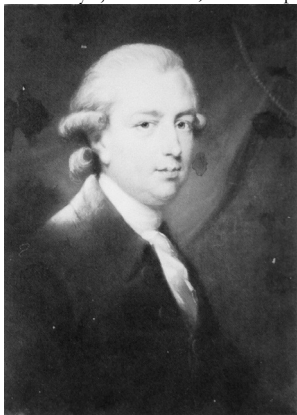
Student in gown and mortar board, pstl/pbm, 28.5x23 ov. (London, Sotheby's, 16.X.1980, Lot 145 repr., as by Russell) [?attr.; v. Vaslet]

1.64.3261 Man, pstl, 61x51 (London, Sotheby's, 21.I.1982, Lot 75 repr., London, Sotheby's, 22.IV.1982, Lot 95, £280) Φ



Photo courtesy Sotheby's

1.64.3264 Gentleman, pstl/ppr, 60.5x46 (London, Sotheby's, 11.XI.1982, Lot 84 repr., b/i) Φ



1.64.3266 Gentleman, pstl, 61x45.7 (London, Sotheby's, 14.III.1985, Lot 258, £320)

1.64.3267 Clergyman, pstl, 75x62.5 (London, Sotheby's, 13.III.1986, Lot 146, £950)

1.64.3268 Gentleman, pstl, 61x43.2 (London, Phillips, 22.IX.1986, Lot 105, £360)

1.64.3269 Gentleman, pstl, 58.4x48.3 (London, Sotheby's, 27.IV.1988, Lot 37, £400)

1.64.327 Man with powdered wig, pstl, 28x22.9, sd (Vienna, Dorotheum, 8.XI.1988, Lot 1148, ÖSch.16,000)

Two beggar boys (London, Sotheby's, 15.III.1990, Lot 56 repr., as by Russell, b/i), v. a/r Gainsborough

1.64.32705 Young boy, pstl, 58.4x43.4 (New York, Christie's East, 3.IV.1990, Lot 166 n.r., est. \$3–5000, \$7000 [= \$7700])

1.64.3271 Young boy in a blue coat, pstl, 60x44 (London, Phillips, 23.IV.1990, Lot 3, £3761)

1.64.32722 Young naval officer, pstl, 23.5x17.5 (London, Christie's South Kensington, 30.V.1990, Lot 142, est. £300–500, b/i) [Attr.; cf. Gardner]

1.64.32725 Man in a red coat, pstl (New York, Doyle's, 19.X.1994, Lot 19 n.r., attr. est. \$1500–2000, \$1380)

1.64.3273 Young boy, half-length, in a red coat, pstl, 46x38 ov. (London, Christie's, 30.III.1993, Lot 7 n.r., est. £700–1000, b/i. London, Christie's South Kensington, 9.VIII.1995, Lot 180 repr., est. £400–600, £765; Castlecomer, Mealy's, 27.XI.1995, Lot 419, Ir£1000) φ



1.64.3275 Young officer of 16<sup>th</sup> or queen's regiment of light dragoons, pstl, 30.5x23 ov. (Edinburgh, Phillips, 22.V.1996, Lot 339, attr., £2200)

1.64.3276 Gentleman in blue coat, white breeches, white waistcoat, seated, pstl, 24x21 (London, Bonhams Knightsbridge, 18.XI.1992, Lot 38 n.r., attr., est. £80–120, £200. London, Phillips, 12.VII.1999, Lot 25 n.r., attr. Russell, est. £300–500; London, Phillips, 9.XI.1999, Lot 25 n.r., attr., est. £300–500, £280)

Boy with toy gun (London, Sotheby's, 12.VII.1984, Lot 72. London, Sotheby's, 4.VII.2001, Lot 165 repr., both as by Russell) [v. Read, 1.612.5033]

1.64.328 Young boy, half-length, in a red coat and white collar, with a spaniel, pstl/ppr, 59.7x44.5 (London, Christie's, 21.XI.2002, Lot 9 repr., est. £4–6000, £3600 [= £4302]. London, Bonhams Knightsbridge, 4.X.2017, Lot 185 repr., est. £3–5000, b/i; Billingshurst, Bellmans, 3–8.III.2018, Lot 1060 repr., est. £600–1000; Townley Hall, Ireland, Adams, 16.X.2018, Lot 190 repr., est. €2500–3500, €3600; English PC 2023) Φσ



Photo courtesy Christie's

Gentleman, half-length, in a blue coat, holding a cane in his right hand, pstl, 74.6x57.2, s < 'J. Russell' (New York, Parke-Bernet, 3.VI.1981, Lot 92 repr.; dep.: Fogg 1981–; New York, Christie's, 30.V.2003, Lot 46 repr., both as by Russell) [v. Scouler

1.64.3287 Gentleman in a blue coat, pstl, 59.1x43.8 ov. (London, Christie's, 3.XII.2003, Lot 1 repr., est. £800–1200, b/i; London, Christie's, 25.III.2004, Lot 9 repr., est. £500–700, £450 [= £537]) Φσ



Photo courtesy Christie's

1.64.329 A Turk, pstl, 59x48 (London, Sotheby's, 21.III.2002, Lot 135 repr., est. £2–3000, £1500 [= £1800]; London, Sotheby's, 1.VII.2004, Lot 132 repr., est. £2–3000, £2000 [= £2400]) Φσ



Photo courtesy Sotheby's

1.64.3293 Gentleman in a blue coat, seated by a window, pstl, c.91x71 (Timonium, Maryland, Richard Opfer, 1.V.2011, Lot 146A repr., anon., est. \$300–500, \$1500; US PC 2013) φ



#### Unidentified women – dated

1.64.33 Lady, crayons, Royal Academy 1771, no. 171

1.64.3304 Lady of quality, crayon, Royal Academy 1774, no. 249

1.64.3305 Lady in the character of Diana, crayon, Royal Academy 1774, no. 252 (=Horace Walpole, 4<sup>th</sup> Earl of Orford; desc.: Earl Waldgrave; Strawberry Hill, George Robins,

25.IV.1842 & seq., p. 223, Lot 56 n.r., 5 gns; Rev. W. Jeremy)

J.64.3306 A Vestal, crayon, Royal Academy 1774, no. 253 (for sale)

J.64.3309 Lady, large ov., crayons, Royal Academy 1775, no. 259

J.64.331 =?pstl, 88x70 ov., sd √ "J. Russell/1775" (London, Sotheby's, 7.VI.2006, Lot 318 repr., est. £6–8000, £6000 [=£7200]) φσ



J.64.3312 Lady, crayons, Royal Academy 1775, no. 261

J.64.3313 Lady, crayons, Royal Academy 1775, no. 262

J.64.3314 Lady with Hervey's *Meditations on the flower-garden*, crayons, Royal Academy 1775, no. 263

J.64.3315 Young lady with a fox dog, crayons, Royal Academy 1775, no. 265

J.64.3318 Lady, reading, crayons, Royal Academy 1776, no. 265

J.64.3319 Lady, crayons, ov., Royal Academy 1777, no. 306

J.64.332 Lady, crayons, ov., Royal Academy 1777, no. 307

J.64.3321 Lady, crayons, ov., Royal Academy 1777, no. 309

J.64.3322 Lady, crayons, ov., Royal Academy 1777, no. 311

J.64.3323 An actress (?Mrs George Canning, née Amry Anne Costello (1747–1827), later Mrs Samuel Reddish, Mrs Richard Hunn, Mrs Richard Yates, née Mary Ann Graham (1728–1787) or Mrs Hartley) as Jane Shore, holding a candle, doing penance, m/u

~grav. J. Watson 1777



J.64.3326 Lady in a white muslin dress, pstl, 75x62, 1777 (Rev. C. G. Wodehouse, Lechdale, 1894). Exh.: London 1889b, no. 203. Lit.: Williamson 1894, p. 172 n.r. φ



J.64.3328 Lady, crayons, ov., Royal Academy 1778, no. 261

J.64.3329 Lady in a Turkish habit, crayons, Royal Academy 1778, no. 262

J.64.333 Lady, crayons, Royal Academy 1778, no. 263

J.64.3331 Lady, crayons, Royal Academy 1778, no. 264

J.64.3332 Lady, crayons, ov., Royal Academy 1779, no. 279

J.64.3333 A candle-light, crayons, Royal Academy 1780, no. 317. Lit.: *A candid review*, 1780, "his best picture"

J.64.3334 The harvest girl, 1780, Royal Academy 1781, no. 128 (artist's sale; London, Christie's, 14.II.1807, Lot 44, as a gleaner, 2 gns; Downer)

J.64.3335 ~cop., pstl/ppr, 61x46, n.s. n.d. (Guildford House, inv. 685. Arthur Powell (1812–1894), glass maker, Milton Heath, Dorking, 1884–94; his son, James Crofts Powell (1847–1914), 13 Charles Street, Grosvenor Place 1913; his son James Jervoise Powell (1888–1955). London, Sotheby's, 17.XI.1983, Lot 111 repr., est. £1000–1500, £1300). Exh.: Guildford 1884, no. 29 n.r.; Russell 1894, no. 66 n.r.; Russell 2006; Russell 2022. Lit.: Williamson 1894, pp. 55, 111, 159, n.r., as 1773 Φκσ



Photo courtesy Guildford Heritage Services

J.64.3337 ~study, cr. clr, 53x42 (desc.: artist's great-grandson, Archibald Arthur Guy Lea (1857–1916), 1909; English PC 2023). Exh.: Russell 1909, no. 28 φ



J.64.3338 Girl with cherries, pstl, Royal Academy 1781, no. 372 (Artist's sale; London, Christie's, 14.II.1807, Lot 27, b/i)

≠Mary Hall, *la petite fille aux cerises*, v. *supra* J.64.172

J.64.3339 Girl with eggs, pstl, Royal Academy 1781, no. 381 (artist's sale; London, Christie's, 14.II.1807, Lot 28, 2 gns; Downer)

J.64.3341 [olim J.64.3301] ~?version, pstl, gch./strained ppr with no canvas, 61x46, inscr. "I Russell pinxt/1781" (Guildford House, inv. 686. Arthur Powell (1812–1894), glass maker, Milton Heath, Dorking, 1884–94; his son, James Crofts Powell (1847–1914), 13 Charles Street, Grosvenor Place 1913; his son James Jervoise Powell (1888–1955). London, Sotheby's, 17.XI.1983, Lot 110, £1200). Exh.: Guildford 1884, no. 41 n.r.; Russell 1894, no. 67 n.r.; Russell 2006; Russell 2022. Lit.: Williamson 1894, pp. 55, 111, 159, n.r., as 1773, as from Royal Academy 1781 Φβσ



Photo courtesy Guildford Heritage Services

J.64.3363 Sandrina nell'opera *La Contalina in Corte*, Royal Academy 1782. Lit.: Williamson 1894, p. 130, missing

J.64.3364 Lady in a Rubens dress, m/u, Royal Academy 1783, no. 60

J.64.3365 Lady, m/u, Royal Academy 1783, no. 147

J.64.3366 Lady in white dress, pstl, 58.5x44.5, sd JR 1783 (London, Sotheby's, 30.VI.1948, £20; W. Sabin) [attr.]

J.64.3367 Lady, crayons, Royal Academy 1785, no. 152

J.64.3368 Lady, crayons, Royal Academy 1785, no. 154

J.64.3369 Lady, crayons, Royal Academy 1785, no. 156

J.64.337 Lady, crayons, Royal Academy 1785, no. 157

J.64.3371 Lady, crayons, Royal Academy 1785, no. 441

J.64.3372 The Sibyl, from Ovid's *Metamorphosis*, Book 14, Royal Academy 1785, no. 334 (artist's sale; London, Christie's, 14.II.1807, Lot 103, b/i) [although included in miniatures

section of 1785 exhibition, 1807 sale included only oils and crayons]

~grav. Collyer 1791

J.64.3374 Lady, crayons, Royal Academy 1786, no. 146

J.64.3375 Lady, crayons, Royal Academy 1786, no. 151

J.64.33752 Lady in a white muslin dress, pstl, 58x44 ov., sd 1786 (Cirencester, Moore Allen & Innocent, 10.XII.2021, Lot 444 repr., est. £3–5000) φ

J.64.3376 A Bacchante, holding a wine-goblet, crayons, 61x46, Royal Academy 1787, no. 155, visible in Martini grav.



J.64.3377 =?crayons (Edward Poore; London, William Richardson, 19.IV.1805, Lot 45, “Head of a Bacchante, in Crayons”, 14/-)

J.64.33772 =?Lady Hamilton as a Baccante, crayons, a/r Romney (Lord de Tabley; London, Christie’s, 7.VII.1827, Lot 1 n.r., 10 gns)

J.64.33775 [= J.64.3569] =?pstl (Mrs L. Hughes 1909). Exh.: Russell 1909, no. 43. Lit.: Williamson/Webb, p. 127

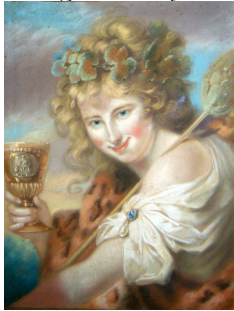
J.64.3378 =?pstl, 66x52 (London, Christie’s, 15.XII.1933, Lot 53 n.r., 9 gns; Deane)

~grav. W. Pether 1791

J.64.3379 ~cop., engraving coloured in pstl by Russell or one of his daughters (F. H. Webb 1894). Lit.: Williamson 1894, p. 169

J.64.338 ~version, pstl, 39.5x31.5 (London, Phillips, 12.VII.1999, Lot 4 n.r., est. £500–700, £400)

J.64.3381 ~cop., pstl, 39x32 (Greenwich, National Maritime Museum, inv. PAJ 2858, as of Emma, Lady Hamilton. Lady Wilmot, [∞ 1795 Sir Robert Wilmot, née Marianne Howard (– 1862)] Rosebank, [Malvern]) [new attr., ?] φκσ



J.64.3382 ~cop., pstl (PC 2018, as of Emma, Lady Hamilton) [new attr., ?] φ



~cop., pnt. (Vienna, Dorotheum, 16.VI.2011, Lot 428 repr., circle of Greuze)

J.64.3383 Lady, m/u, Royal Academy 1787, no. 449

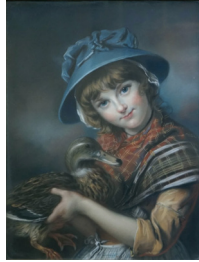
J.64.3384 Jeune femme poudrée, la chevelure ornée de rubans bleus, corsage blanc à galon noir, fond de ciel, pstl, 60x45, s 1787. Russell pinx 1787” (Paris, Drouot, Bellier, 30.III.1942, Lot 91. n.r., ff32,500)

J.64.3385 Market girl holding a mallard, pstl, 61x45, sd 1787, Royal Academy 1788, no. 427 (Lady Duveen; sale p.m., London, Christie’s, 20.III.1984, Lot 64 repr., est. £3–5000, £3200) φ



Photo courtesy Christie’s

J.64.3386 ~cop. XXc, pstl/ppr, 60.5x44.5 (Engiennes-Bains, Goxe, Belaisch, 15.X.2022, Lot 119 repr., with pendant J.64.3159, as autograph, est. €1500–2000, withdrawn) φκν



J.64.3388 ~sketch, black chlk. Lit.: Webb 1910, repr.

J.64.3389 The peasant’s little maid, m/u, Royal Academy 1788, no. 143

J.64.339 Lady, m/u, Royal Academy 1788, no. 371

J.64.3391 Lady reading, m/u, Royal Academy 1788, no. 425

J.64.3392 Young woman, bust length, pstl, 58.5x43.5 ov., sd 1788 (London, Sotheby’s, 30.XI.1978, Lot 163 repr., £900; William Drummond, Covent Garden Gallery 1979; PC 2005). Lit.: *Connoisseur*, CCI, 1979, p. 214 φ



Photo courtesy owner

~pastiche, v. J.64.2385 “Mrs Raikes”, supra

J.64.3394 Girl in white dress, white muslin bonnet, blue ribbons, pstl, 59.7x44.5 ov., sd ← “JRussel RA p/1789” (desc.: PC 2024) φ



J.64.3395 Portrait of a lady, m/u, Royal Academy 1789, nos. 168, 169, 427 (Lady Brabourne 1894). Lit.: Williamson 1894, p. 147 n.r. [Lady Banks, *q.v.*; the others ?relatives]

J.64.3396 Girl with milk, m/u, Royal Academy 1789, no. 362

J.64.3397 Portrait of a lady, m/u, Royal Academy 1789, no. 422

J.64.3398 Girl with tambourine, in a white and blue dress, pstl, Ø61 rnd., sd → “JRussel RA p/1797”, Royal Academy 1797, no. 431 (Russell; London, Christie’s, 14.II.1807, Lot 122, £6/15/-, [John James] Vallotton [(– 1828), haberdasher]; desc.: granddaughter, Miss [Eliza] Vallotton (1818–1902), London, 1894. Acq. Asher Wertheimer 1903; Lady Duveen; sale p.m., London, Christie’s, 20.III.1984, Lot 63 repr., est. £3–5000, £3200). Lit.: Williamson 1894, p. 168, repr. opp. p. 122 φ



J.64.34 ~version, pstl, 61x46 ov., [?]sd 1789 (Archdeacon Wilson, Rochdale, 1894; acq. Asher Wertheimer 1899. J. Lassalle; vente p.m., Paris, Drouot, Lair-Dubreuil, 16–19.XII.1901, Lot 28 repr., ff12,000; Wildenstein; London, Christie’s, 28.IV.1902, Lot 19, 260 gns; Haythorn; London, Christie’s, 14.III.1903, Lot 143 n.r., 90 gns; Lawrence). Lit.: Williamson 1894, p. 172 n.r.; *Connoisseur*, II, 1902, pp. 141, 136 repr.; Dorange 2010, no. 12 repr. φβ



J.64.3401 ~cop., pstl, 60x44.5 rect. (PC 2024) φκν



- 1.64.3402 Lady, pstl, 76.2x99.1, sd 1789 (London, Sotheby's, 13.VII.1966, Lot 34, £200)
- 1.64.3403 Young lady of quality, m/u, Royal Academy 1790, no. 104
- 1.64.3404 Young lady of quality, m/u, Royal Academy 1790, no. 118
- 1.64.3405 The Persian Sibyl, pstl, 74x60 ov., sd ?1787, Royal Academy 1790, no. 164 (artist's sale; London, Christie's, 14.II.1807, Lot 104, "charming specimen of the excellent taste of the artist", 10 gns; Samuel Russell, the artist's son. Miss Douglas, Dunally, Halliford, Shepperton on Thames 1894; London, Christie's, 1.VII.1899, Lot 99, 1100 gns; Charles Wertheimer 1908; J. Wentworth Smith; London, Christie's, 14.XII.1928, Lot 70 repr., 780 gns; Emile Wertheimer; London, Sotheby's, 20.V.1953, £27; Yeoman. London, Sotheby's, 30.VI.1954, £26; W. Sabin. London, Christie's, 8.IV.1997, Lot 16 repr., est. £4–6000, £8500 [=£9775]). Exh.: Paris 1908a, no. 108, no pl. Lit.: Williamson 1894, p. 141 n.r.; Dorange 2010, no. 27 repr. Φ



LARGER IMAGE

Photo courtesy Christie's

- ~grav. John Ogborne 1793
- 1.64.3409 ~cop. XX<sup>c</sup>, pstl/ppr, 73.5x61 (PC 2015; Paris, Artcurial, 3.VI.2015, Lot 295 repr., as cop, XIX<sup>c</sup>, est. €800–1200, €2275; PC; Paris, Artcurial, 20.I.2016, Lot 19 repr., est. €800–1200, €3250) φκ
- 1.64.3411 A cottage girl in the sunshine, m/u, Royal Academy 1790, no. 274
- ~cop., watercolour. Lit.: Webb 1790, repr.
- 1.64.3413 The tired little wanderer, Royal Academy 1790, no. 276
- 1.64.3414 ~version. Lit.: Webb 1910, as cop. by Miss Russell a/r Russell original; Sée 1918, repr., as by Russell Φ



- 1.64.3416 ~sketch, London, V&A, Russell volumes, vol. 2, p. 12
- 1.64.3417 Girl with goldfish, m/u, Royal Academy 1790, no. 431
- 1.64.3418 =?girl with a vase of goldfish (artist's sale; London, Christie's, 14.II.1807, Lot 83, 2½ gns; Vallotton. Acqu. Mrs H. M. Sée 1918)

- 1.64.3419 =?Goldfish, pstl (T. M. McLean, 7 Haymarket, London; sale p.m., London, Christie's, 30.I.1909, Lot 30, with pendant, Miss Linwood, 3½ gns; Smith)
- 1.64.34195 =?Girl, in white dress, holding a bowl of goldfish, pstl, 58.5x44.5 (London, Christie's, 22.XII.1938, Lot 26 n.r.)
- ~sketch, watercolour. Lit.: Webb 1910, repr.
- 1.64.3421 Lady, pstl, 75x62.5, sd 1790 (London, Christie's, 16.XI.1982, Lot 74, £600)
- 1.64.34215 Lady reading, crayons (Charles & Nathaniel Chauncey; London, Greenwood, 18.V.1790, Lot 66, £5/15/-; Pendergrass)
- 1.64.34216 Young lady, crayons, ov. (Charles & Nathaniel Chauncey; London, Greenwood, 18.V.1790, Lot 70, £4/15/-; Sumner)
- 1.64.34217 Young lady, crayons, ov. (Charles & Nathaniel Chauncey; London, Greenwood, 18.V.1790, Lot 71, £7/15/-; Hanmen)
- 1.64.3422 Lady, m/u, Royal Academy 1791, no. 13
- 1.64.3423 Lady, m/u, Royal Academy 1791, no. 20
- 1.64.3424 Girl with basket, m/u, Royal Academy 1791, no. 141
- 1.64.3425 Girl feeding rabbits, m/u, Royal Academy 1791, no. 157
- 1.64.3426 Cleopatra, pstl, 90x70 ov., Royal Academy 1792, no. 524 (artist's sale; London, Christie's, 14.II.1807, Lot 110, "fine"; 10 gns; Samuel Russell; desc.: Rev. Sydenham F. Russell 1894. London, Sotheby's, 7–8.VII.2011, Lot 300 repr., est. £4–6000, b/i; Prinknash Abbey Park, Chorley's, 10–11.XI.2011, Lot 57 repr., est. £2–3000). Exh.: London 1806, no. 35 [as with Rev. S. Russell]. Lit.: Williamson 1894, p. 141 n.r. φσ



1.64.3428, v. 1.64.2006

- 1.64.343 Lady, pstl/ppr, 60x44.5, sd ♂ "J.Russell R.A. p<sup>t</sup> 1792" (London, Sotheby's, 24.XI.2005, Lot 114 repr., est. £2500–3500, b/i; London, Sotheby's Olympia, 14.IX.2006, Lot 81 repr., est. £1000–1500, £1500 [=£1800]). Lit.: Jeffares 2006, p. 473Ciii, as ?sd 1794 Φ



Photo courtesy Sotheby's

- 1.64.3433 Lady in a white muslin dress, seated, playing the harp, pstl, 109x84, sd 1792 (Lord Howe. London, Christie's, 20.XII.1934, Lot 25

- n.r., 68 gns; F. Partridge; London, Christie's, 29.XI.1946, 20 gns; Lane)
- 1.64.3434 Young lady, m/u, Royal Academy 1793, no. 133
- 1.64.3435 Lady, m/u, Royal Academy 1793, no. 310
- 1.64.3436 Lady in white muslin dress, pstl, 59x43 ov., 1793 (Capt. Bettelheim; London, Christie's, 22.V.1914, Lot 5, 8½ gns; Rothschild)
- Lady in classical pose (Cunliffe; London, Robinson & Fisher, 16.XII.1926, Lot 35 repr., as sd Russell 1793), v. a/r Cosway, 1.242.201*

- 1.64.3439 Lady in white, pstl, 91.4x71.1 (Paris, Laurin Guilloux Buffetaud Tailleur, 19.VI.1973, Lot 15S, f3200)
- 1.64.344 Young lady, half-length, in a white dress with a spray of lilies-of-the-valley in her décolletage, seated on a sofa, pstl, 90x69.5, sd 1793 (Lady Duveen; sale p.m., London, Christie's, 20.III.1984, Lot 69 repr., est. £1000–1500; London, Christie's, 9.VII.1985, Lot 103, £850) φα



- 1.64.3442 Lady with dog, pstl, 56x45.7, sd 1793 (Troy, Frank H. Boos, 30.VIII.1987, Lot 953, \$4500)

*Lady, sd 1794, v. 1792*

- 1.64.3444 Lady, pstl, 51x38, sd 1794 (London, Phillips Son & Neale, 14–18.XII.1908, £300)
- 1.64.3445 =?Lady, pstl, 53x42, inscr. "J. Russell/[?]Paint 1794" (Arthur Tooth; New York, 19.II.1925, Lot 14, \$210; John West Horner, New York) [?]attr.] φπ



- 1.64.3447 Lady, in profile, reading, pstl, 60x44.5, sd "J.Russell/1794" (London, Sotheby's, 21.III.2001, Lot 105 repr., est. £2–3000, b/i; Swindon, Dominic Winter Book Auctions, 22.VII.2004, Lot 163, est. £700–1000; Oxford, Mallams, 8.X.2004, Lot 449 repr., est. £800–1200, £1500) Φ



Photo courtesy Sotheby's

J.64.345 Market girl with pigs in Exeter market, pstl, 91.5x71, s r, Royal Academy 1794, no. 319 (Rev. John Sanford; cat. raisonné 1847, no. 4; Cecil Miles, Lord Methuen, Corsham Court, 1894; London, Christie's, 13.V.1899, Lot 89D, as "a pig in a poke", 750 gns, Asher Wertheimer. Lionel Wormser Harris; sale p.m., London, Christie's, 21.III.1941, Lot 31 n.r., 26 gns; Cooling Galleries). Lit.: Williamson 1894, p. 155; Mireur; Bénézit, as "incredulity" Φ



J.64.3451 [=J.64.3501] ~cop., pstl, 59.5x45.5 (Guildford House inv. 970. London, Sotheby's, 15.VII.1993, Lot 62 repr., as by Russell, est. £800–1200, b/i; London, Bonhams Knightsbridge, 15.VI.1994, Lot 42 repr., est. £800–1200, b/i; London, Sotheby's, 9.XI.1995, Lot 71 n.r., est. £800–1200, £805). Exh.: Russell 2006; Russell 2022 φκσ



Photo courtesy Guildford Heritage Services

J.64.3452 Lady, m/u, Royal Academy 1794, no. 182  
 J.64.3453 Lady, m/u, Royal Academy 1794, no. 211  
 J.64.3454 Young lady, m/u, Royal Academy 1795, no. 149  
 J.64.3455 Young lady, m/u, Royal Academy 1795, no. 258  
 J.64.3456 Lady, m/u, Royal Academy 1795, no. 410  
 Lady as *Sigismunda* (London, Christie's, 9.V.1910, Lot 72, as sd Russell 1795), v. a/r Cosway, J.242.201  
 J.64.3458 Lady, m/u, Royal Academy 1796, no. 296  
 J.64.3459 Lady with a white headdress, seated by a ledge with a landscape, pstl/ppr, 90x70.5, sd r "J. Russell RA pinxit 1796" [?1796] (London, Christie's, 26.IV.1977, Lot 56, £95. San Francisco, Butterfield & Butterfield, 26.V.1999, Lot 1135 repr., est. \$3–5000, \$3000 [= \$3450].

London, Christie's, 4.VII.2023, Lot 122 repr., est. £8–12,000, b/i) φσ



J.64.3461 The St Giles's Beauty, crayons, a.1797. Exh.: London 1797

J.64.3462 Child and cat, pstl, 61x46, 1797 (Sir William Lawrence 1894). Lit.: Williamson 1894, p. 151 n.r.

J.64.3463 Arethusa, m/u ~grav. J. R. Smith 1798

J.64.3467 Lady holding a book, pstl, 61x45, sd 1801 (London, Sotheby's Olympia, 14.VII.2004, Lot 34 repr., est. £1000–1500, b/i; London, Sotheby's Olympia, 13.X.2004, Lot 33 repr., est. £500–700, £500) Φσ



Photo courtesy Sotheby's

J.64.347 Young lady in a bonnet with a candle, pstl/ppr, 61x45, sd 1801 (London, Sotheby's Olympia, 14.VII.2004, Lot 36 repr., est. £3–5000, £6500; Historical Portraits, cat. 2005, no. 28 repr.) Φσ



Photo courtesy Sotheby's

J.64.3473 =?girl with a candle (artist's sale; London, Christie's, 14.II.1807, Lot 71, "the effect of the candle-light is expressed with great beauty and truth", £3; Pearson)

J.64.3474 Ballad girl, a St Giles's songstress, with the spire of St Giles-in-the-Fields in the background, pstl, Royal Academy 1803, no. 386, citing verses "O call me not lazy-back, beggar, and bold-enough...", from H. Piercy's

ballad *The Beggar Girl* of 1802 (artist's sale; London, Christie's, 14.II.1807, Lot 91, b/i [4s. to Cropley]). Lit.: Anon. 1803; Graves; Williamson 1894, p. 117 n.r.

J.64.3475 =?repl., pstl, 63.5x47, 1802 (Rev. Thomas Sheepshanks, Harrogate, 1894). Lit.: Williamson 1894, p. 164 n.r., as RA version

J.64.3476 ~repl., pstl, 60x45 [sight 58x43], s v "J Russell RA pinxit/1802" (Maria Russell; her nephew, Rev. S. H. Russell; Henry Webb 1894; don: F. H. Webb; acqu. Asher Wertheimer 1902, 300 gns; Charles J. Wertheimer 1908; London, Christie's, 30.V.1912, Lot 57, 210 gns; Asher Wertheimer; desc.: Mrs Joan Conway c.1982. London; a UK heritage asset). Exh.: Russell 1894, no. 102 b.r., as 1803, 61x46, with H. Webb; Paris 1908a, no. 112, pl. 95. Lit.: Williamson 1894, p. 170 n.r.; Webb 1910, repr. Φσ



LARGER IMAGE

J.64.3477 ~repl., pstl, 60x44.5, sd v "J Russell RA pinxit/1803" (Sabin; London, Christie's, 16.XII.1938, Lot 2, 9½ gns, Reitlinger; desc.: London, Sotheby's, 20.XI.1986, Lot 45 repr., as ex Webb, est. £3–5000, b/i or withdrawn) φσ



Photo courtesy Sotheby's

J.64.3478 ~cop., pstl/ppr, 60x45, inscr. v "J Russell RA .../1802" (Simon Carter Gallery, Woodbridge, 1976; acqu. John Ross; London, Christie's, 14.XI.2019, Lot 17 repr., a/r Russell, as ex Sheepshanks [?], est. £700–1000) φκσ



J.64.3479 Lady, standing, facing front, half length, pstl/ppr, 1802 (Cambridge, Fitzwilliam

Museum, inv. PD.46-2010. Legs Harold Barkley 2010)

1.64.348 A cry of London, pstl/ppr, 60.7x45.0, sd v "J. Russell R.A. pinxit/1803" (Cambridge, Fitzwilliam Museum, inv. PD.113-1991. Legs Henry Reitlinger 1991)

1.64.3481 Young woman reading a book in a landscape, pstl, 100.2x75, sd v "John Russell R.A. p.1804" (Captain Stewart Foster. London, Sotheby's, 11.XI.1982, Lot 88 repr., £1800. London, Christie's South Kensington, 31.V.2009, Lot 97 repr., est. £4-6000, £4500 [=£5625]) φσ



Photo courtesy Sotheby's

**Unidentified, undated women – museums**

1.64.3485 Young woman with a locket, pstl/ppr, 60.5x45.0 (Cambridge, Fitzwilliam Museum, inv. PD. 114-1991. Legs Henry Reitlinger 1991)

1.64.3482 =?Lady in a white dress holding a miniature, pstl, 60x44.5 ov. (London, Christie's, 27.IV.1907, Lot 41 n.r., 20 gns; Royal)

1.64.3486 The age of bliss, pstl (Carton, Maynooth). Lit.: Williamson 1894, p. 152, repr. opp. p. 135 φ



1.64.3488 ~variant?, pstl, 57x44.5, sd 1787/88 (Cook; London, Christie's, 24.V.1929, Lot 54, with pendant, The Cake in Danger, 1050 gns; A. Mitchell) φ



~grav. Edmund Scott 1790

1.64.3491 Lady in a white dress with blue ribbons, with chalk-holder and a drawing, pstl, 59x44.4 (Guildford House, inv. 1057. London, Christie's, 8.VI.2000, Lot 48 repr., est. £6-8000, b/i). Exh.: Russell 2006; Russell 2022. Lit.: Jeffares 2006, p. 475Bii; *R4 Magazine*, Summer 2006, p. 74 repr. φσ



Photo courtesy Guildford Heritage Services

1.64.3494 =?a lady drawing, painted with great delicacy and taste (artist's sale; London, Christie's, 14.II.1807, Lot 50, b/i)

1.64.3497 Bacchante, pstl, 67x56 (Guildford House, inv. 983, as by Russell. Acqu. V&A/MGC grant 1994). Exh.: Russell 2006; Russell 2022 [??attr.] φ??ασφ

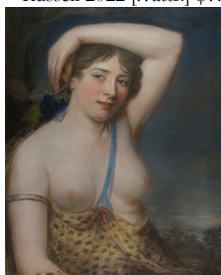


Photo courtesy Guildford Heritage Services

1.64.3499 [=1.64.3647] Girl with a basket of flowers, pstl, 59x47 (Guildford House inv. 890. London, Sotheby's, 25.I.1989, Lot 66, £600; acqu. 1989, V&A/MGC grant). Exh.: Russell 2006; Russell 2022 φπσ



Photo courtesy Guildford Heritage Services

1.64.3503 Lady, pstl, 49.5x40.5 (Leeds, Temple Newsam House, inv. 22/83. Legs M. Ellender 1982)

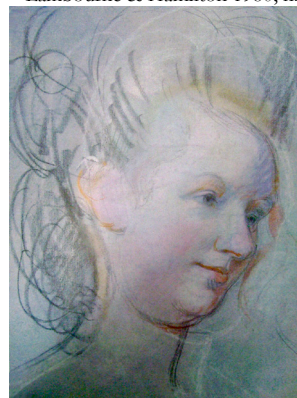
1.64.3504 Head of a young woman, crayon, unfinished (London, V&A, P.114-1890. Sir Edwin Durning-Lawrence, Bt; don 1890). Lit.: Williamson 1894, p. 151 n.r.; Lambourne & Hamilton 1980, repr. φσ



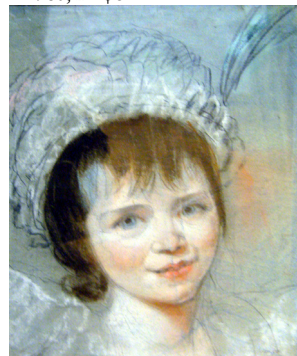
1.64.3506 Head of a young woman (London, V&A, P.120-1890. Sir Edwin Durning-Lawrence, Bt; don 1890). Lit.: Williamson 1894, p. 151 n.r.; *Connoisseur*, 1928 repr. φσ



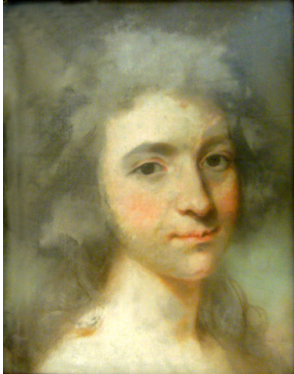
1.64.3508 Head of a young woman (London, V&A, 117-1890. Sir Edwin Durning-Lawrence, Bt; don 1890). Lit.: Williamson 1894, p. 151 n.r.; *Connoisseur*, XC, 1932, repr. opp. p. 308, as with Ralph Edwards; *Connoisseur*, XCV, 1935 repr.; Lambourne & Hamilton 1980, n.r. φσ



1.64.351 Head of a young woman, pstl (London, V&A, P.118-1890. Sir Edwin Durning-Lawrence, Bt; don 1890). Lit.: Williamson 1894, p. 151 n.r.; Lambourne & Hamilton 1980, n.r. φσ



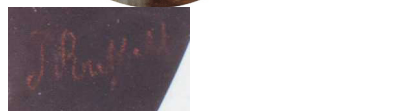
J.64.3512 Head of a young woman with powdered hair and brown eyes, pstl (London, V&A, 121-1890. Don Sir Edwin Durning-Lawrence, Bt; don 1890). Lit.: Williamson 1894, p. 151 n.r.; Lambourne & Hamilton 1980, n.r. φ



J.64.3514 Head of a young woman, cr. clr/bl. ppr, 31.7x26.7 (New Haven, Yale Center for British Art, B1977.14.5468. Edwin Lawrence 1894–p.1920; Sir Edwin Durning-Lawrence, Bt; Squire Gallery, London, 1949; Leonard G. Duke 1949–61). Exh.: New Haven 1979, no. 78 repr. φ



J.64.3517 Dame au bonnet, pstl/ppr, 72x55 ov., inscr. v. "J. Russell" (Hermitage, inv. OP-27314. [P.A. Z. Khitrovo]; acqu. 1925). Exh.: St Petersburg 2001, no. 43 repr.; St Petersburg 2003a, no. 25. Lit.: Каменская 1960, no. 90 repr.; Dukelskaya 1979, no. 252 repr.; Renne 2011, no. 104 repr. [??attr.] φ



J.64.352 Girl in white in large hat, pstl, 61x46, 1797 (Truro, Royal Cornwall Museum, inv. 1948.14.2. Sir William Lawrence, 75 Lancaster Gate, London, 1894; his [niece], Theodora Durning Lawrence (1889–1971); acqu. 1948). Lit.: Williamson 1894, p. 151 n.r.; =?Webb 1910 φ



**Unidentified, undated women – order of appearance**

J.64.3523 Lady (artist's sale; London, Christie's, 14.II.1807, Lot 3, b/i)

J.64.3524 Lady (artist's sale; London, Christie's, 14.II.1807, Lot 30, b/i)

J.64.3525 Lady (artist's sale; London, Christie's, 14.II.1807, Lot 31, b/i)

J.64.3526 The Recording Angel, from Sterne [*Tristram Shandy*] (artist's sale; London, Christie's, 14.II.1807, Lot 32, b/i. W. J. McCoy & Sons, antiques dealers, Belfast; cessation of business, sale, Belfast, 6–8.XI.1929)

J.64.3527 Girl with a basket of flowers (artist's sale; London, Christie's, 14.II.1807, Lot 34, 2 gns; Vallotton)

J.64.3528 Lady in a landscape (artist's sale; London, Christie's, 14.II.1807, Lot 45, b/i)

J.64.3529 Girl and loaf, a pleasing subject from rustic life (artist's sale; London, Christie's, 14.II.1807, Lot 48, 3 gns; Sir W[illiam] Skeffington, [Bt (1742–1815)])

~cop. Miss Linwood, needlework, 117x94 (Leicester, New Walk Museum and Art Gallery.. Exhibitions Miss Linwood's embroidered pictures, Saville House; London, Christie's, 23.IV.1846; Lot 37, as "Frugal fare", £8/5/- London, Sotheby's, 1956)

J.64.3531 Lady (artist's sale; London, Christie's, 14.II.1807, Lot 52, b/i)

J.64.3532 Lady, in profile (artist's sale; London, Christie's, 14.II.1807, Lot 53, b/i)

J.64.3533 Girl with a cricket (artist's sale; London, Christie's, 14.II.1807, Lot 55, b/i)

J.64.3534 Veronica (artist's sale; London, Christie's, 14.II.1807, Lot 66, £1/4/-; Fitch)

J.64.3535 Girl with a crab (artist's sale; London, Christie's, 14.II.1807, Lot 75, "truly original, the expression natural and pleasing", b/i)

J.64.3536 ~sketch, watercolour. Lit.: Webb 1910, repr.

J.64.35265 Lady (artist's sale; London, Christie's, 14.II.1807, Lot \*76 [manuscript addition to catalogue], 1 gn; Cormac)

J.64.3537 Girls feeding poultry in a landscape, m/u (artist's sale; London, Christie's, 14.II.1807, Lot 89, "small and highly esteemed picture", 14½ gns; Walter)

J.64.3538 The Butter Girl (artist's sale; London, Christie's, 14.II.1807, Lot 94, 3 gns; Birch)

J.64.3539 The Milk Girl – rustic beauty and nature are here sweetly united (artist's sale; London, Christie's, 14.II.1807, Lot 96, £5/10/-; Todd)

J.64.35395 =?Milk girl, crayons (London, Greenwoods, 24.V.1793, Lot 64 n.r., anon., "fine") [new attr.; other anon. items fit descriptions of Russell works)

J.64.354 The Match-Girl, companion to The Beggar-Woman and Child, and of equal merit, pnt., 84x65, sd 1786 (artist's sale; London,

Christie's, 14.II.1807, Lot 112, 7 gns; Maitland). Lit.: Webb 1910, repr.

~pendant: *beggar woman and child*

J.64.3543 Girl feeding poultry, m/u (artist's sale; London, Christie's, 14.II.1807, Lot 114, "possessing all Mr Russell's excellence", 14½ gns; C. Russell). Lit.: Williamson 1894, p. 122, 162, as pnt. belonging to Champion Russell

J.64.3544 Betsy Thoughtless (artist's sale; London, Christie's, 14.II.1807, Lot 117, b/i)

J.64.3545 =?Betsy in trouble, child with a dead canary, pstl (Schiavonetti; London, Christie's, 22–23.VII.1814, with pendant, The dog's first sight)

~grav. Niccolo Schiavonetti

J.64.3546 J.64.35461 J.64.35462 Little girl, m/u (desc.: artist's great-nieces, Elizabeth Anne and Bertha Marianne Russell, Guildford, 1884). Exh.: Guildford 1884, no. 26, 27 or 38 n.r.

J.64.3547 Girl, pstl, ov. (Sumner family. Lord Wolseley, Dublin, 1894). Lit.: Williamson 1894, p. 172 n.r.

J.64.3548 A girl in the sun; true specimen of Nature, m/u (artist's sale; London, Christie's, 14.II.1807, Lot 108, £3/16/-; Vallotton)

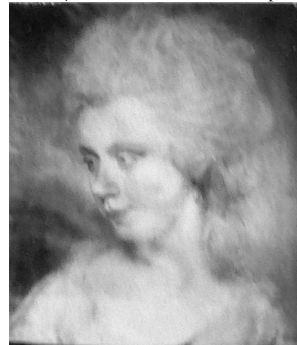
J.64.3549 Lady, pstl, 27x21.5 ov. (Dr Capadose, Guildford, 1894). Exh.: Guildford 1884, no. 39 n.r.; Russell 1894, no. 13 n.r. Lit.: Williamson 1894, p. 138 n.r.; Williamson/Webb p. 138, not by Russell

J.64.355 Lady, pstl, 27.5x21.5 ov. (Dr Capadose, Guildford, 1894). Exh.: Guildford 1884, no. 53 n.r.; Russell 1894, no. 12 n.r. Lit.: Williamson 1894, p. 138 n.r.; Williamson/Webb p. 138, not by Russell

J.64.3551 Lady, pstl, 61x46 (W. J. Evans, Haverhill, 1894). Lit.: Williamson 1894, p. 142 n.r. φ



J.64.3553 Lady, pstl, 61x46 (W. J. Evans, Haverhill, 1894). Lit.: Williamson 1894, p. 142 n.r.



J.64.3555 Lady, pstl, ov. (Dr Forschall [Francis Hyde Forschall, forensic surgeon, son of the secretary of the British Museum], 12 Southwood Lane, 1894). Exh.: Russell 1894, no. 24 n.r. Lit.: Williamson 1894, p. 143 n.r. φ



J.64.3557 The daughter of Herodias, pstl, 76x97 (George Hilditch, Edithstow, Waldegrave Park, Strawberry Hill 1894). Exh.: Russell 1894, no. 31 n.r. Lit.: Williamson 1894, p. 147 n.r.; Webb 1910, repr., "doubtful" [?]; ?19<sup>th</sup> century anon.] φπ

J.64.3558 Lady of about 40 in white satin dress, pstl (George D. Gould, Bellefield House, Sandal, Wakefield 1894). Lit.: Williamson 1894, p. 145 n.r.

J.64.3559 Lady's head, pstl (Champion B. Russell 1894). Lit.: Williamson 1894, p. 151 n.r.

J.64.356 Head of an unknown girl, pstl, 41x33 ov. (Rev. Sydenham F. Russell 1894). Lit.: Williamson 1894, p. 163 n.r. φ



J.64.3562 Felina with a kitten, pstl, a/r Reynolds, 74x62 (Francis H. Webb, Leatherhead, 1894 acqu. Asher Wertheimer; Oxfordshire; a UK heritage asset). Lit.: Williamson 1894, p. 169 n.r. A/r Reynolds pnt., 1786, Royal Academy 1788, no. 378 (Detroit, inv. F71.68). Lit.: Mannings 2086; grav. Collyer 1790

*Jeune femme assise (Mme Bernstein 1897)*. Exh.: Paris 1897, no. 198 n.r.; Tournoux 1897, p. 449 repr. [v. Humphry]

J.64.3563 St Cecilia in green, with music, pstl, 61x48 (London, Christie's, 15.VII.1899, Lot 80, 10 gns)

J.64.3564 Child in white dress and blue sash, m/u, 61x44.5 (Col. Offley Crewe Read; London, Christie's, 22.III.1902, Lot 129, 260 gns; Colnaghi)

J.64.35645 Lady holding rabbit, pstl (Hodgkins; acqu. VII.1902, £125/5/-, Duveen Bros, stockbook no. 24346; sold 13.IX.1902)

J.64.35647 Girl in white dress, pstl, 58.5x43 (London, Christie's, 23.II.1907, Lot 91 n.r., 60 gns)

*Lady in a bonnet, pstl, 33x26 ov. (Berlin, 22.I.1908, Lot 33 repr.)* [v. German sch.]

J.64.3567 Head of a girl in a white cap, pstl (T. M. McLean, 7 Haymarket, London; sale p.m., London, Christie's, 30.I.1909, Lot 31, with pendant, lady and son, 2 gns; Renton)

J.64.3568 Two girls in mob caps, one weeping, the other consoling her, pstl (John Lane 1909). Exh.: Russell 1909, no. 41

J.64.357 Woman, the artist's cook, breaking sticks, pstl (desc.: artist's great-grandson, Archibald

Arthur Guy Lea (1857–1916), 1909). Exh.: Russell 1909, no. 48

J.64.3571 Lady (Mrs T. H. Mason 1909). Exh.: Russell 1909, no. 52

J.64.3572 Lady (Captain A. Pepys 1909). Exh.: Russell 1909, no. 53

J.64.3573 Child with peaches, pstl. Lit.: Webb 1910, repr. φ



J.64.3575 Une grande dame, robe bleue, corsage décolleté, ruche blanche, regardant presque de face, coiffée à la poudre, pstl (Paris, Drouot, Lair-Dubreuil, 15.II.1911, Lot 38 n.r., Fr1100)

J.64.3576 La jeune artiste, pstl, 60x45 (Paris, Georges Petit, 22.V.1911, Lot 3 repr., est. Fr20,000, Fr15,500). Lit.: Dorange 2010, no. 39 repr. φ



J.64.3577 Weibliches Brustbild in ausgeschnittener, blauer Taille und gepudertem Lockenhaar, pstl, 57x44 (J.F.D.; Berlin, Lepke, 28.XI.1911, Lot 24 n.r., attr.)

J.64.3578 Lady, esquisse, 22x23 (Russell family 1911). Exh.: Paris 1911, no. 122

J.64.3579 Mère et enfant, esquisse, 72x57 (Mrs William Clarke 1911). Exh.: Paris 1911, no. 127

J.64.358 Young girl resting her arms on a table, pstl, 66x54.5 ov. (London, Christie's, 16.III.1912, Lot 12, 8 gns; Amor)

J.64.3581 Head of a child, pstl, 28.5x24 (London, Christie's, 18.III.1912, Lot 9, 4½ gns; Neale)

J.64.3583 Lady in white dress, resting her head upon her right hand, pstl, 60x44.5 ov. (Sir Lionel Phillips, Bt, of Tylney Hall, Winchfield; London, Christie's, 25.IV.1913, Lot 25, 8 gns; G. Howard)

*Two young girls in white muslin frocks and lace caps, pstl, 39.5x46 ov. (Rev. T. Russell; London, Christie's, 25.VII.1913, Lot 6 n.r., as by John Russell, 260 gns; Colnaghi & Obach), v. Ann Russell*

*Two nymphs: Autumn; & pendant: Winter, pstl, a/r Rosalba, 60x44.5 (Rev. T. Russell; London, Christie's, 25.VII.1913, Lot 9 n.r., as by John Russell, 70 gns; Asher Wertheimer), v. Ann Russell*

J.64.3586 Lady in blue dress, with white mob-cap, pstl, 66x52 (London, Christie's, 3.III.1916, Lot 34, 7 gns; Moyes)

J.64.3587 Lady, pstl, rect. (Max Rothschild, Sackville Gallery, repr. adv. *Burlington magazine*, .IV.1916) φ



J.64.3588 Little girl, in blue and white drapery, resting her head on her arm, pstl, 59x44.5 (Joseph Wilkinson; Red Cross sale, London, Christie's, 20.IV.1918, Lot 1840 n.r., 50 gns; Leggatt)

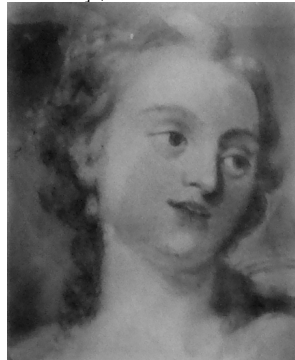
J.64.3589 Girl in white muslin dress with brown scarf, pstl, 60x44.5 (London, Christie's, 31.I.1919, Lot 38, 265 gns)

J.64.35891 Lady in a white dress embroidered with flowers, blue sash, pstl (London, Christie's, 21.III.1919, Lot 112, £168; Agnew's, drawing stock no. 9184)

J.64.35892 Lady in white muslin dress with white bonnet trimmed with blue ribbon, tied in a bow under her chin; seated; red curtained background, pstl, 91.5x70 (Captain B. C. Vernon-Wentworth, Wentworth Castle, Barnsley; London, Christie's, 13.XI.1919, Lot 5 n.r.) [?=Mrs FitzHerbert, v. supra J.64.1539]

J.64.359 The coquette, half-length, viewed full, black décolleté bodice, two pink bows, white skirt and fichu; blond curly hair in white lawn mob-cap tied under chin, pink bow over forehead, pstl/ppr, 39x32 ov., a/r Reynolds (Francis Wellesley, Woking; cat. no. 228; London, Sotheby's, 28.VI.1920, Lot 686 n.r.)

J.64.3591 Girl's head (Sir Edward Durning-Lawrence). Lit.: Sée 1920, p. 163 repr. [a/r Rosalba, Diane, possibly copy in Blenheim, J.21.1858] φ



J.64.3593 Several unidentified female heads (Sir Edwin Durning-Lawrence 1894). Lit.: Sée 1920, p. 163 repr. φ

J.64.3594 ~one of these, pstl/ppr, 24x20 (Mme M...; Paris, Drouot, Pierre Bergé, 12.VI.2015, Lot 68 repr., éc. anglaise, fin XVIII<sup>e</sup>, est. €400–600. Saint-Germain-en-Laye, 15.III.2023, Lot 15 repr., éc. XIX<sup>e</sup>, est. €20–30). Lit.: Sée 1920, p. 163 repr., col. C, photo i φ



J.64.3595 Lady, profile to left, loose white gown, yellow flower and bluish-green tartan pattern sash, slightly powdered dark brown hair falling in locks over neck and back, blue background, pstl (Duveen Brothers 1911). Exh.: Russell 1911, no. 7

J.64.3596 Lady, in white muslin dress, with her child, seated, holding a cat, m/u, 72.5x58.5 (London, Christie's, 24.III.1922, Lot 104, 16 gns; Eden)

J.64.3597 Girl with dog, pstl, 70x56 (London, Christie's, 21.VII.1924, Lot 19 n.r., 3½ gns; Ewitt)

J.64.35975 Head of a lady in pink dress, pstl, 46x30.5 (London, Christie's, 30.VI.1924, Lot 1 n.r., 1½ gns; E. Wertheimer)

J.64.3598 Child in white frock with blue scarf, pstl, 42x39 (London, Christie's, 13.II.1925, Lot 33 n.r., 42 gns; West)

J.64.3599 Lady in white dress with brown scarf, pstl, 60x43 (London, Christie's, 13.II.1925, Lot 35 n.r., 28 gns; Marshall)

J.64.36 Miranda, bust, facing front, white décolleté dress with green draperies, brown hair tied with green ribbon, pstl/ppr, 60.5x42 (H. F. Webb; Xavier Haas; New York, Anderson, 20–21.I.1927, Lot 130 n.r.)

J.64.36005 A child holding grapes, pstl, 58.5x46 (Lady Holford; London, Christie's, 17–18.V.1928, Lot 159 n.r., 12 gns; Edwards)

J.64.3601 Lady in black and white dress with large feathered hat, pstl, 65x54.5 ov. (Robert Nesham, of Utrecht House, Poynders Road, Clapham Park; sale p.m., London, Christie's, 23.VII.1928, Lot 29 n.r., attr. Russell, 6 gns; Sampson) [?attr.; cf. J.64.1506]

J.64.36015 Dame mit dunkeln Locken und weissem Kleid. Hüftbild en face, pstl, 74.5x61.5 (Luzern, Fischer, 23–25.VIII.1928, Lot 473 n.r.)

J.64.3603 Lady in white drapery, pstl, 61x45.8 (London, Christie's, 8.VII.1929, Lot 30, 200 gns)

J.64.3604 Lady, in white muslin dress with blue sash, powdered hair, seated, red curtains and architectural background, pstl, 75x62 (London, Christie's, 22.XI.1929, Lot 71 n.r., 42 gns; Deacon)

*Servant (Kessler; New York, Rains, 23–25.I.1930, Lot 314 repr.; A. Seligmann, Paris, 1934, repr. cat.) [v. Morland]*

J.64.3606 Jeune femme, yeux bleus, corsage bleu, pstl, 60x45 (Charles Mannheim; vente p.m., Paris, Georges Petit, 14.III.1913, Lot 25 repr., est. £25,000, £14,500; Jules Féral. M. S...; Paris, Jean Charpentier, Ader, 19.VI.1934, Lot 13 repr., as autograph, £8000). Lit.: Dorange 2010, no. 48 repr. [?attr.] Φ?α



J.64.3608 Child, ¾ length, seated to right, facing white, white muslin dress, blue sash, white lace bonnet, cradling a black spaniel; landscape background, pstl, 60x44.5, s (S. B. Joel, 2 Great Stanhope Street, London; London, Christie's, 31.V.1935, Lot 4 n.r., 52 gns; Lowy)

J.64.3609 Lady in a light blue dress, pstl, 74x61 (London, Christie's, 5.VII.1935, Lot 58 n.r., 14 gns; Gurr, Johns)

J.64.361 Girl with blue sash, pstl, 62x49.5 (London, Christie's, 28.II.1936, Lot 4 n.r., 4 gns; J. Mitchell)

J.64.3611 Lady as Ceres, pstl, 60x44.5 (London, Christie's, 12.III.1937, Lot 16 n.r., 6½ gns; Baker)

J.64.3612 Young girl holding some flowers, pstl, 56x46 (London, Christie's, 23.VII.1937, 8 gns; Spiller)

J.64.3613 Lady in a white dress, pink bow, white mob cap, pstl, 74x61 (London, Christie's, 22.XII.1938, Lot 27 n.r., attr., 10½ gns; W. Sabin)

J.64.36131 Girl with a basket of fruit, pstl, 66x54 (London, Christie's, 22.XII.1938, Lot 29 n.r., attr.)

J.64.36135 Young girl with a bird cage, pstl (Arthur N. Gilbey; sale p.m., London, Christie's, 25–26.IV.1940, Lot 192 part, n.r.)

J.64.3615 L'enfant au bonnet, pstl, 30x25 (Paris, Drouot, Ader, 9.VI.1944, Lot 19 n.r., £35,000)

J.64.3616 Damenbildnis, pstl/ppr, 60x52.5 (Bundesamt für zentrale Dienste und offene Vermögensfragen, Referat C 2; inv. Al 1616). Lost Art-ID 264435)

J.64.3617 Lady (New York, Sotheby Parke Bernet, 25–27.IV.1946, \$200)

J.64.3619 Girl, half-length, facing, pstl, 58.5x43 (London, Sotheby's, 27.VI.1945, £31; W. Sabin)

J.64.362 Girl with a dog, pstl (London, Christie's, 3.V.1946, £31)

J.64.3621 Girl with candle, 59x44 (Jacques Seligmann, Paris; seized ERR, inv. Sel. 83; German Embassy, Paris, Louvre; .XI.1940; Neuschwanstein; Lager Peter, Munich CCP, Mü-Nr 548/3; repatriated 19.VI.1946; restituted) [?attr.; cf. H. R. Morland] φα



J.64.3622 =?enfant tenant une chandelle, pstl. Exh.: Paris 1919a, no. 220 n.r.

J.64.3623 Jeune fille assise au pied d'un arbre (Paris, 11.III.1949, attr., £9500)

J.64.36235 Titian's daughter, pstl, 88x68.5, a/r Titian [pnt., Berlin] (London, Christie's, 15.VII.1949, Lot 6 n.r., 3 gns; Omell)

J.64.36238 Jeune fille à la rose, m/u. Exh.: Paris 1950a, no. 87 n.r.

J.64.3624 Jeune femme, pstl, 75x62 (Camille Groult; Paris, Charpentier, 27.IV.1951, Lot 49, £450,000). Lit.: Bénézit, as by William Russell; Dorange 2010, no. 53 n.r., as by John Russell

J.64.3625 Fillette tenant un bouquet, pstl, 60x44 (Charles Wertheimer; Paris, Drouot, 7.XII.1955, Lot 9 repr. cvr)

J.64.3626 Fillette tenant un panier de fleurs, pstl, 60x44 (Charles Wertheimer; Paris, Drouot, 7.XII.1955, Lot 10 repr. cvr)

*Lady with a pearl necklace (Guildford c.1900; PC; legs; F. M. Shea, Margate, 1957). Lit.: Country life, 18.IV.1957. p. 759 repr., attr. Russell [v. English sch.]*

J.64.3627 Jeune femme en robe blanche, ceinture bleue, pstl, 60x45 (Dauvillet; Paris, Georges Petit, 27.IV.1932, Lot 37 repr., est. £30,000, £33,000; Paris, Galliera, 14.XII.1960, Lot 13 repr.). Lit.: Dorange 2010, no. 45 n.r. φ



J.64.3629 Dame de qualité, pstl, 77x64 (Versailles, palais des Congrès, 25.XI.1969, Lot 13 n.r.). Lit.: Dorange 2010, no. 43 n.r.

A Match Girl, with a view of Old Northumberland House in background, statue of Charles I, pnt., 91.5x71, Royal Academy 1786, no. 42 (artist's sale, London, Christie's, 14.II.1807, Lot 112, 7 gns; Maitland [b/i]. London, Christie's, 18.VII.1924, Lot 56 n.r., 440 gns. Sir John Foley Grey, Bt; Enville Hall; London, Christie's, 15.VI.1928, Lot 97 repr., 480 gns. Knoedler, stock no. CA1217; acqu. Parish Watson & Co., \$3500. London, Christie's, 13.III.1970, Lot 121 repr., 420 gns; Parsons; London, Christie's, 19.XI.1970, Lot 88; 400 gns; Strutt). Lit.: *The times*, 26.V.1928, repr., as pstl [??]

J.64.3631 Lady, pstl, 68.5x43 [sic] (London, Sotheby's, 3.V.1973, Lot 51)

J.64.3632 Dame de qualité, pstl, 59x44 ov. (Versailles, Palais des congrès, Martin, 13.V.1973, £6000)

J.64.3633 Young woman, pstl, 60x43.5 (London, Christie's, 8.VI.1976, £180)

J.64.3634 Lady, pstl, 58.4x43.2, s (London, Phillips, 18.X.1976, Lot 72, £260)

J.64.3635 Girl in white bonnet carrying a basket, pstl, 61x45.7 (London, Christie's, 14.VI.1977, Lot 219, £450) [?attr.; later pastiche, on George Rowney & Co. pastel paper] φπv

J.64.36355 Sleeping baby, pstl, 30x44 (George H. Gabb. London, Sotheby's, 16.III.1978, Lot 150) φ



J.64.3636 Lady seated beside a balcony, pstl, 73.7x61 (London, Sotheby's, 22.III.1979, Lot 138, £520. Richard & Georgina Ivor, Fine English Watercolours, London; St Charles Art Gallery, New Orleans; PC; New Orleans Auction Galleries, 6.VI.2021, Lot 758 repr., attr., est. \$2–4000) φ



J.64.3637 Lady, pstl, 73.7x61 (Crewkerne, Lawrences, 1.IV.1982, Lot 6, £340)  
 J.64.3638 Lady, pstl, 73.7x61 (South Yarra, Leonard Joel, 2.IV.1982, Lot 1361, A\$2000)  
 J.64.3639 Young woman, pstl/ppr, 78.7x63.5 (New York, Doyle, 26.I.1983, Lot 28, \$1500)  
 J.64.364 Girl with turnips, pstl/ppr, 64x47.5 (artist's sale; London, Christie's, 14.II.1807, Lot 100, "girl with turnips, sweetly painted from Nature", £5; [John James] Vallotton; desc.: granddaughter, Miss [Eliza] Vallotton, London, 1894. Lady Duveen; sale p.m., London, Christie's, 20.III.1984, Lot 65 repr., est. £700–1000, £3000). Lit.: Williamson 1894, p. 168 n.r. φ



Photo courtesy Christie's  
 J.64.3641 Hebe, a young lady in a white dress with blue ribbons holding an embossed silver chalice, pstl/ppr, 61x45.7 (artist's sale; London, Christie's, 14.II.1807, Lot 85, "delicate and highly finished", £2/5/-; [John James] Vallotton; desc.: granddaughter, Miss [Eliza] Vallotton, London, 1894. Asher Wertheimer 1904. Lady Duveen; sale p.m., London, Christie's, 20.III.1984, Lot 68 repr., est. £1500–2000, £7000. PC 2021). Lit.: Williamson 1894, p. 168 n.r.; Webb 1910, as lady with tankard φ



~sketch, watercolour. Lit.: Webb 1910 repr.  
 J.64.3642 Lady, pstl, 76.2x56 ov. (Exeter, Phillips, 21.III.1985, Lot 249, £310)  
 J.64.3643 Lady, pstl, 88.9x66 (London, Sotheby's, 21.XI.1985, Lot 220, £720)  
 J.64.3644 Jeune femme, pstl, 61x45.7 ov. (Paris, Nouveau Drouot, Ader, Picard, Tajan, 24.II.1987, Lot 71, attr., F20,000)  
 J.64.3645 Girl, pstl, 62x49 ov. (Troyes, Pomez & Boisseau, 16.X.1988, Lot 5, F15,000)  
 J.64.3646 Woman with veil, pstl, 28x22.9, s (Vienna, Dorotheum, 8.XI.1988, Lot 1147, ÖSch.16,000)  
 J.64.3648 Peasant girl with baby, pstl/ppr, 55.9x48.3 (London, Christie's, 21.III.1989, Lot 74, attr., £600. Crewkerne, Lawrences, 13.X.2021, Lot 626 repr., attr., est. £300–500) φα



J.64.3649 Girl in bonnet, pstl, 55.9x40.6 (London, Christie's, 21.III.1989, Lot 75, £800) Young lady (London, Christie's, 14.XI.1989, Lot 55), n. English sch.  
 J.64.365 Young child, full length, in white petticoats and yellow shoes, pstl, 63x55.5 (Billingshurst, Sotheby's, 20.V.1991, Lot 403 n.r., attr., est. £400–600, £400 [=£440])  
 J.64.3651 Lady in a bonnet with a blue ribbon, pstl/ppr, 90x68.5, s ✓ "J. Russel ft." (Frankel; New York, Parke-Bernet, 24.V.1944, Lot 46 repr., \$225; J. R. Rohe; New York, Sotheby's, 5.IV.1990, Lot 215 repr., est. \$6–8000, b/i; New York, Sotheby's Arcade, 19.VII.1990, Lot 225 repr. est. \$3–4000, \$1900 [= \$2090]; Vienna, Dorotheum, 9.III.1993, Lot 138 repr., est. ÖSch60–80,000, ÖSch55,000) [Pattr.] φα



Photo courtesy Sotheby's  
 Young girl wearing a white bonnet (London, Christie's, 12.IV.1994, Lot 23 repr.), v. Hoare, Mrs Giffard  
 J.64.3652 Young girl, pstl, 61x43 (London, Bonhams Chelsea, 11.VIII.1994, Lot 30, £1000)  
 J.64.3653 Lady in a lace bonnet with gloves, pstl, 59.6x44.4 (G. Oxley; London, Bonhams Knightsbridge, 15.III.1995, Lot 27 repr., est. £1000–1500, £900. Aylsham, Norwich, Keys, 13.III.2015, Lot 22 repr., anon. 19<sup>th</sup> century, est. £200–300) φ



J.64.3654 Jeune fille en bleu, pstl/ppr, 38x30 (Paris, Pescheteau Badin Godeau Leroy, 22.III.1995, Lot 84 n.r., attr., est. F8–10,000, F11,500). Lit.: Dorange 2010, no. 50 n.r.  
 J.64.36545 Lady in a blue and white dress, pstl, 72x59 (London, Phillips, 29.I.1996, Lot 7 n.r., est. £1000–1500, b/i)  
 J.64.3655 Lady in a blue and white dress, pstl, 59.7x49.5 (Richard Naworth, Blackburn. Mrs G. E. M. Lewis; legs: King's College Cambridge; London, Phillips, 28.IV.1986, Lot 29 repr., £5800. London, Christie's, 11.XI.1997, Lot 13 repr., est. £5–7000, withdrawn) [Pattr.] φπν  
 J.64.3656 Jeune femme, pstl, 59x43.5 (Rouen, d'Anjou, 29.VI.1999, repr., Éc. anglaise XIX<sup>e</sup>) [new attr.] φν  
 J.64.3657 Woman, bust length, wearing a hat, pstl, 70x53 (olim Detroit Institute of Arts, deaccessioned: New York, Christie's East, 26.XI.2001, Lot 56 n.r., attr., est. \$1500–2000, b/i; New York, Christie's East, 26.XI.2001, Lot 115 n.r., attr., est. \$500–700, no reserve, \$550)  
 J.64.3658 Lady, pstl/ppr, 61x45.5 (London, 25.VI.2000, Lot 116, sch. of Russell; London, Bonhams, 25.VI.2002, Lot 116 repr., attr., est. £1800–2200, b/i. London, Christie's South Kensington, 8.VI.2010, Lot 358 repr., circle of Russell, est. £1200–1800) [Pcop./follower of Russell] φασ



J.64.3666 Jeune femme, pstl, 59x44 ov. (Paris, Drouot, Couturier–Nicolay, 19.VI.1987, Lot 8 attr.; Paris, Drouot, Delvaux, 25.IV.2007, Lot 127 repr., attr., est. €3500–5000, b/i). Lit.: Dorange 2010, no. 51 repr. [??attr.] φπ



J.64.3663 Young woman, pstl, 30x25 (desc.: artist's granddaughter, Mrs Holesgrove, c.1894; legs: Captain C. Shurlock; [desc.: Olive Shurlock Sjölander, Skara, Sweden, 1966.] Stockholm, Bukowskis, 16–17.II.2009, Lot 117 repr., follower of Russell, est. SKr4–5000). Lit.: Webb 1910, repr. φ

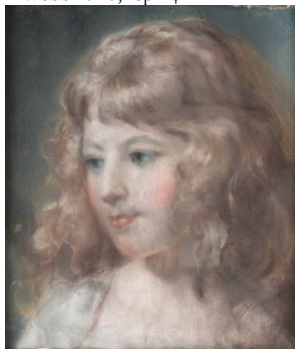
Rosebery's, 10.IX.2013, Lot 537 repr., as by Russell, est. £3–4000, b/i; Shaftesbury, Dorset, Semley Auctioneers, 12.VII.2014, Lot 123 repr., est. £2–3000; Ian Stewart, Beal House, Yorkshire; Edinburgh, Lyon & Turnbull, 14–15.X.2020, Lot 445 repr., attr., est. £500–700 [new attr.] φσ



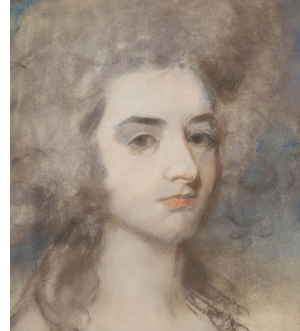
J.64.36681 Small girl's head, pstl (PC 2019) J.64.36682 Head of a woman, ?Marchioness of Worcester, née Charlotte Sophia Granville i.e. Duchess of Beaufort, née Charlotte Sophia Leveson-Gower (1771–1854), unfinished, pstl, 32x28 (Lewes, Gorrings, 7.VI.2021, Lot 614 repr., attr., est. £300–500) [no resemblance with future Duchess of Beaufort] φ



J.64.3661 Girl with a blue ribbon, pstl, 59x47.7 ov., inscr. ✓ "J. Russell R.A." (Monaco, Sotheby's, 29–30.XI.1986, Lot 62 repr., est. F10–15,000. Paris, Drouot, Beaussant Lefèvre, 20.VI.2008, Lot 20 repr., English sch., early XIX<sup>e</sup>, est. €400–600. Deauville, Artcurial, 15.XII.2007, Lot 221 repr., est. €1000–1500, b/i). Lit.: Jeffares 2006, p. 475Bi φπ



J.64.3664 Girl in a white dress, blue sash, large straw hat, with her dog, pstl, 69.8x57.1 (Leominster, Brightwells, 9.III.2011, Lot 43 repr., est. \$4–6000) [?attr.] φα



J.64.36683 Lady in a blue dress, white jacket, pstl/ppr, 60x45.5 (Dorchester, Duke's, 5.IV.2023, Lot 56 repr., attr. Francis Cotes, est. £500–1000) [new attr., ?] φαν



J.64.3662 Young woman, pstl (Sir Edwin Durning-Lawrence 1894. UK art market a.2008, as by Russell). Lit.: Sée 1920, p. 163 repr. φ



J.64.3665 Lady in a white dress, pstl, 56x44 (Donnington Priory, Dreweatt, 22.VI.2011, Lot 2 repr., English sch. c.1800, est. £200–300) [new attr., ?] φαν



J.64.3667 Lady in a white dress, pstl, 60x45 (Knutsford, Frank Marshall, 21–22.V.2013, Lot 838 repr., anon. 19<sup>th</sup> century; PC; London,

**Pendant couples – dated**

J.64.3669 Gentleman, seated, three-quarter length, in blue coat, holding a tricorne hat and cane, in a landscape, pstl, 63.5x59.5 ov., sd ← "J Russell pinx'/1777"; & pendant: J.64.3667 Lady, seated, half-length, white dress, blue sash and headdress, pstl, 63.5x59.5 ov., sd → "J Russell pinx'/1777" (London, Christie's, 14.XI.1989, Lot 53 repr., est. £4–6000, b/i; London, Christie's, 10.VII.1990, Lot 110 n.r./repr., est. £2–3000, £1800 [=£1980]. New York, Christie's, 30.I.2018, Lot 81 repr., est. \$5–8,000, b/i) φ





- J.64.3671** Gentleman, facing, with powdered hair, brilliant blue coat, frilled jabot, cloudy sky background; & pendant: **J.64.3672** Young woman in white muslin gown, blue sash, curly brown hair dressed high, strands falling to shoulders, head turned, blue eyes gazing to right, cloudy sky background, pstl, 59.7x46 ov., sd ← “J. Russell, pt. 1786” (New York, Anderson’s Galleries, 29.IV.1932, \$200/\$250)
- J.64.3673** Gentleman in a brown coat, pstl, 61x45, sd ↗ “J Russell R.A. Pinxt/1790”; & pendant: **J.64.3674** elderly lady, pstl, 61x45 (London, Sotheby’s, 7.VI.2006, Lot 314 repr., est. £3–5000, b/i. London, Christie’s South Kensington, 22.II.2011, Lot 247 repr./n.r., circle of Russell, est. £2–3000, £2250) φσ



**Pendant couples – undated, order of appearance**

- J.64.3675** Gentleman; & pendant: **J.64.3676** lady, pstl, 51x40.7 ov. (London, Christies, 5.IV.1909, Lot 23, 5 gns; Hale)
- J.64.3677** Gentleman in plum-coloured coat; & pendant: **J.64.3678** lady, pstl, 60x45 (London, Christie’s, 8.IV.1911, Lot 32, 370 gns; Sabin)
- J.64.36783** Gentleman in blue coat; & pendant: **J.64.36784** lady in a blue dress, pstl (London, Christie’s, 16.V.1918, Lot 20 n.r., 36 gns; Smith)
- J.64.3679** Gentleman in blue coat; & pendant: **J.64.368** lady in brown dress, white cap, pstl, ov. (London, Christie’s, 1.XII.1922, Lot 254, 10 gns; Saunders)
- J.64.3681** Gentleman in blue coat, gold buttons, white lace stock, powdered hair; & pendant: **J.64.3682** lady in pink dress, white fichu, blue sash, powdered hair, pstl, 59.5x44.5 (London, Christie’s, 24.V.1929, Lot 49 n.r., 290 gns; Vicars)
- Man; & pendant: Dame [?Henriette Friederike von Hertefeld] (Paris, Drouot, 20.XI.1961, Lot 8/7 repr., as attr. Russell) [v. Schröder]*

**Groups, other items – dated**

- J.64.3696** Aquarius, pstl or chalk, a/r Michelangelo, 61x46, Royal Academy gold medal 1770 (desc. Russell family). Lit.: Webb 1910, repr. φ



- J.64.3697** Child with a cat, crayons, Royal Academy 1772, no. 224
- J.64.3698** Child with a dog, crayons, Royal Academy 1772, no. 225
- J.64.3699** Flora and Zephyr, Royal Academy 1773
- J.64.370** Lady and child, crayons, Royal Academy 1775, no. 264
- J.64.3701** Child, crayons, Royal Academy 1776, no. 267
- J.64.3702** Two young gentlemen with the sensitive plant, crayons, ov., Royal Academy 1777, no. 305
- J.64.3706** Girl with baby sister, pstl, 58.4x43.2, sd 1777 (London, Christie’s, 16.III.1982, Lot 54, £260)
- J.64.3707** Cottage children, pstl, 59x44, sd ↙ “J Russell pinxit 1777” , Royal Academy 1778, no. 265 (London, Christie’s, 16.III.1982, Lot 54, subjects unknown. Exeter, Bearnes Hampton & Littlewood, 9.III.1994, Lot 679, unidentified, est. £400–600, b/i; London, Bonhams Knightsbridge, 16.XI.1994, Lot 44 repr., est. £400–600, b/i. Cambridge, Cheffins, 24.IX.2009, Lot 728 repr., as Elizabeth W. and Frances Lydie Cuthbert Earle children, est. £2–3000, b/i; Cambridge, Cheffins, 24–25.III.2010, Lot 554 repr., est. £600–800, b/i; Stansted Mountfitchet, Sworders, 10.VII.2012, Lot 388 repr., as unknown sitters, est. £1500–2500; Diss, T. W. Gaze, 1.II.2014, Lot 6071 repr., as ?artists’ daughters, est. £600–900; Diss, T. W. Gaze, 21.X.2014, Lot 126 repr., as

unknown children, est. £600–900; Oxford, Mallam’s, 27.II.2019, Lot 368 repr., attr. Russell, unknown sitters, est. £600–800) [sitters’ identity proposed recently; inconsistent with date] φαδ



- ~grav. in reverse, White
- J.64.3709** Lady and child, crayons, ov., Royal Academy 1779, no. 279
- J.64.371** Woman and two children, 1779. Lit.: *Connoisseur*, LVII, 1920, p. 128 repr. [attr.] φα



- J.64.3712** The Wanderers, m/u, c.1781 (artist’s sale; London, Christie’s, 14.II.1807, Lot 1, “painted 26 years; it was preserved its original colour and freshness, and was never glazed”, b/i)
- J.64.3713** Filial piety, filial affection, or the blind beggar, pstl, 97x74, 1786 (artist’s sale; London, Christie’s, 14.II.1807, Lot 115, as Filial Piety pendant to Lace Makers, “combine all the charms of colour and effect, and perfect Nature”, b/i at £7. [London, Christie’s, ?13.II.1875, as ex Duke of York, £15; ?William Shurlock, note in Williamson/Webb, pp. 32x33.] Viscount Galway, Serlby Hall, 1894; Serlby Hall sale, 24.X.1948, Lot 134 repr.). Lit.: Williamson 1894, [?]repr. opp. p. 32 φ



- ~grav. Caroline Watson
- J.64.3716** ~version, pstl, 89x69 (Jeffery Whitehead, Southwood, Bickley, Hampshire). Lit.: Williamson 1894, p. 171 n.r., as pstl, girl’s head

autograph, rest perhaps by William Russell; Webb 1910, repr., as oil. ?William Russell  $\phi$   
 J.64.3717 =?pstl, 87x70 (London, Christie's, 8.IV.1932, Lot 8 n.r., 6 gns; Clark)  
 J.64.3718 =?Blind beggar of Bethnal Green, pstl, 87.5x68.5 (E. M. Hodgkins; London, Christie's, 29.VI.1934, Lot 16 n.r., 6 gns; Waters)  
 J.64.3719 =?Filial piety, m/u [?pnt.], Royal Academy 1786, no. 427 (? J. E. H. Gordon 1894). Lit.: Williamson 1894, p. 145 n.r.  
 =?pnt., 90.6x70.3 (Bowes Museum, inv. BM 1029)

~?cop. John Norris Hewett, q.v.

J.64.37195 [olim J.64.3668] ~cop. (girl), in a red cape tied with a bow, black bonnet, pstl, 56x41 (London, Christie's, 12.VII.1988, Lot 144 repr., as autograph, est. £3–4000; London, Christie's, 15.XI.1988, Lot 68 repr., as autograph, est. £1500–2000. Salisbury, Woolley & Wallis, 4.III.2020, Lot 63 repr., as autograph, est. £1500–2500)  $\phi\kappa\nu$



J.64.3723 A telescopic appearance of the southern limb of the Moon on 7<sup>th</sup> August 1787 at 3 o'clock in the morning, ink, watercolour [?], sd "John Russell, Oct<sup>r</sup> 25<sup>th</sup> 1796", included in the Liber amicorum of Rev. James Stanier Clarke (London, Christie's, 8.VI.2011, Lot 12, b/i)  $\phi$



J.64.3725 Lady, full face, and child, m/u, ov., Royal Academy 1788, no. 168, visible in Ramberg's drawing

J.64.3726 Ruth and Naomi, pstl, 104x77.5 ov., Royal Academy diploma piece, 1789 (London, Royal Academy, inv. 03/662). Lit.: Williamson 1894, p. 161, repr. opp. p. 28  $\phi$

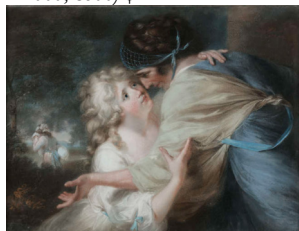


J.64.3728 ~repl., pstl, 60x79 (artist's sale; London, Christie's, 14.II.1807, Lot 99, "great artifice concealed with great judgement; one of the most striking excellencies of this great artist", b/i. Desc.: Maria Russell (1783–1861); Legs: her nephew Manwaring Shurlock, Chertsey, 1884–94; legs: F. H. Webb 1911. London, Sotheby's, 27.XI.2003, Lot 220 repr., est. £5–7000, b/i; London, Sotheby's Olympia, 12.X.2005, Lot 66 repr., est. £1200–1800, b/i; London, Sotheby's Olympia, 19.I.2006, Lot 16 repr., est. £3–5000, b/i). Exh.: Guildford 1884, no. 42 n.r.; Paris 1911, no. 125. Lit.: Williamson 1894, p. 164 n.r.; Williamson/Webb, reduced in size to the Margravine of Anspach's frame  $\Phi\sigma$



Photo courtesy Sotheby's

J.64.3729 ~cop., pstl, 75x99 (Rathscar House, Co. Louth. Drogheda, Townley Hall, Adams, 10.X.2017, Lot 290 repr., a/r Russell, early 19<sup>th</sup> century, inscr. by artist [copyist?], est. €500–1000, €600)  $\phi\kappa$



J.64.3731 Cymon and Iphigenia, Royal Academy 1789, no. 359 (artist's sale; London, Christie's, 14.II.1807, Lot 98, "painted with great force and spirit, and finely coloured", b/i)

J.64.3732 Finding of Moses, with ?Lady Hawke as Pharaoh's daughter, pstl, 76x99, Royal Academy 1789, no. 420 (Countess of Rosse, née Cassandra Hawke-Harvey (1851–1921), 1909. Desc.: PC 2012). Exh.: Russell 1909, no. 17 Lit.: Jeffares 2015b, fig. 10  $\phi$



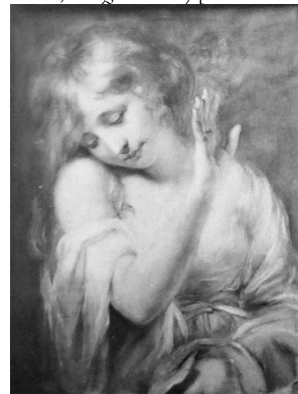
~study, pencil. Lit.: Webb 1910

J.64.3735 Callisto reproved, pstl, 61x46, Royal Academy 1790, no. 203 (artist's sale; London,

Christie's, 14.II.1807, Lot 70, as Diana and Callista, "very elegant", b/i. Mrs Cross, granddaughter of the artist, 1894). Exh.: Russell 1894, no. 14/15. Lit.: Williamson 1894, p. 140 n.r.; Webb 1910, picture divided into two by Ann Russell  $\phi$

J.64.3736 (Callisto):

J.64.3737 (Hera) Prudence, pstl/ppr, 57.1x42.5 (London, Christie's South Kensington, 19.IX.2002, Lot 11 repr., attr. Russell, as of Prudence, est. £1000–1500, £800. Harrogate, Morphets, 6.VI.2013, Lot 408 repr., as autograph unknown lady, est. £700–1000; Ian Stewart, Beal House, Yorkshire; Edinburgh, Lyon & Turnbull, 14–15.X.2020, Lot 79 repr., attr., est. £500–700) [new identification]  $\phi\nu\sigma$



J.64.374 The fortune-teller, a gypsy with a girl, Royal Academy 1790, no. 242 (lost). Lit.: Williamson 1894, pp. 113, 163 n.r., erroneously as = 1795 version

J.64.3741 ~?version, pstl, 90x70, sd 1795 (artist's sale; London, Christie's, 14.II.1807, Lot 79, 6½ gns; William Russell, younger brother of the artist; desc. Rev. E. J. Russell of Todmorden; acqu. Asher Wertheimer. Mrs Fleischman 1911; Mrs William Ashcroft; 3<sup>rd</sup> Red Cross sale, London, Christie's, 31.III.1917, Lot 1278, 1050 gns; Loder. London, Christie's, 14.IV.1950, 30 gns; George. London, Sotheby's, 30.XI.1955, as sd 1795, £35; Hayes. London, Christie's, 16.VII.1974, Lot 86 n.r., 360 gns; London, Christie's, 17.VI.1975, Lot 51, 270 gns; London, Christie's, 16.III.1982, Lot 53, £2600; Clarendon Gallery). Exh.: Paris 1911, no. 108. Lit.: Williamson 1894, pp. 113, 163 n.r.; Williamson/Webb pp. 113, 163, Rev. E. J. Russell's pstl sd 1795; Sée 1911, repr. p. 31  $\Phi$



J.64.3743 ~cop. Patricia Langmead (1945–) (*head of gypsy on/h*), pstl, 46x35.5 (Aylsham, Keys, 3.X.2014, Lot 559 repr.; Aylsham, Keys, 6.II.2015, Lot 560 repr London, Chiswick Auctions, 24.III.2020, Lot 482 n.r., est. £100–150) φκ

J.64.3745 The little lace-makers, m/u, Royal Academy 1790, no. 248

J.64.3746 =?The little lace-makers, pstl, 90x70, sd 1797[?] (artist's sale; London, Christie's, 14.II.1807, Lot 116, "the originality of these two pictures [pendant, Filial piety, Lot 115] is not the least striking part of their merit. They combine all the charm of colour and effect, and perfect taste", £5; Birch. Rev. F. A. Bowles 1894. J. Wentworth Smith; London, Christie's, 14.XII.1928, Lot 68, 250 gns, White. London, Christie's, 19.III.1968, 55 gns). Lit.: Williamson 1894, p. 137 n.r. φ



J.64.3748 A view of Guildford, pstl, Royal Academy 1790, no. 407

J.64.3753 St Catharine's Hill by moonlight, pstl, Royal Academy 1790, no. 418 (artist's sale; London, Christie's, 14.II.1807, Lot 57; b/i)

J.64.3754 Head of a dog, pstl, 61x46, 1791 (A. F. Jeffreys 1894). Lit.: Williamson 1894, p. 140 n.r.

J.64.3755 Cottage felicity, m/u, Royal Academy 1792, no. 384

J.64.3756 =?The Cottage family, 91.5x68.5 (artist's sale; London, Christie's, 14.II.1807, Lot 123, "a peasant with his two female children, one on his knee, the easy attitude and contentment of the father are happily conceived, the children sweetly disposed, as was usual with this artist in treating subjects of this kind", 13 gns; Dr Duvall. Rev. Provost Northcote, DD, Stoke-upon-Trent c.1920)

J.64.3757 Moon, part, pstl, 20.3x15.2, sd 1794 (London, Christie's, 12.XI.1968, Lot 164, £300)

J.64.3758 Great drawing of the moon, pstl, 145x145, sd √ "John Russell RA pin. 1795" (Oxford, Museum of the History of Science, inv. 39338. Mrs Bell; acqu. Dr Rigaud for Radcliffe Observatory 1824; water damage during journey repaired by Russell's daughter; transferred by Radcliffe Trustees 1935). Lit.:

Gibbes Rigaud, *Notes & queries*, 18.VIII.1877, p. 134, damaged in transport, restored by Miss Russell; Williamson 1894, p. 156 n.r.; Stone 1896, repr. p. 90, discussing damage and restoration; W. F. Ryan, "John Russell, R.A., and early lunar mapping", *Smithsonian journal of history*, 1, 1966, pp. 27–48; *Graphic magazine*, 1922; Christopher Hussey, letter, *Country life*, 14.VI.1930, p. 884 repr.; *Illustrated London news*, 18.X.1930, p. 1 repr., crater Copernicus at right-hand lower edge of illuminated surface suffered from 1824 damage; Tom Lubbock, *Independent arts and books review*, 25.II.2008; Hindmarsh 2018, fig. 5.3; Owens 2024, fig. 58 φ



J.64.376 The face of the moon, pstl/board, 64.2x47, s ↓ "Painted from Nature by John Russell RA", c.1795 (Birmingham Museum and Art Gallery, inv. 1957 P 23, dep.: Soho House Museum, Handsworth. Radcliffe Observatory a.1922. Acqu. 1957). Exh.: Birmingham 2006, no. 14; Birmingham 2009, no. 55 repr. Lit.: *Graphic magazine*, 1922; Ellis & al., *Birmingham Museum & Art Gallery*, 1999, no. 56 repr.; Uglow 2002, repr.; Richard Green, exh. rev., *Burlington magazine*, CXLVIII/1237, .IV.2006, p. 286, fig. 52; Burns & Saunier 2014, p. 134 repr.; Jonathan Jones, *Sensations*, London, 2018, p. 154 repr. φ



J.64.3762 Artifice and Credulity, an old fortune teller and a young maiden, pstl/ppr, 91.4x70.5, s √ "J. Russell, R.A. pinx!", Royal Academy 1795, no. 295 (Tate N05249. Rev. John Sanford; cat. raisonné 1847, no. 5; Lord Methuen, Corsham Court, 1895; London, Christie's, 13.V.1899, Lot 89E, no title, 490 gns; Asher Wertheimer. Lionel Wormser Harris, legs 1940). Exh.: Nottingham 1998, no. 79, det. repr.; London 2014a, as the Fortune Teller, 1790. Lit.: Williamson 1894, pp. 115, 155 n.r.; V. & L. Adair 1971, p. 173 repr.; Burns & Saunier 2014, p. 141 repr., as Le diseur de bonne aventure, c.1790 φσ



J.64.3764 Frontispiece to Dr Thornton's *Illustrations of the sexual system of Linnaeus*, m/u, Royal Academy 1795, no. 294

J.64.3765 The nocturnal Cereus presented to Hymen, for Dr Thornton's *Temple of Flora*, m/u, Royal Academy 1796, no. 207

J.64.3766 The moon, pstl, 61x46, 1796 (London, Science Museum, inv. 1922.34)



J.64.3767 [olim J.64.3827] The fortune teller, pstl, 78x98, , sd ← "J Russell RA p/1797", inscr. verso "J Russell RA/1797" "Mrs H B Ogles' Portrait /the property of/Mrs E. Walpole Browne 1847" (?Mrs Robert Ogle, née Hannah Compton (1760–1821); her daughter, Hannah Ogle (1790–1879) ∞ 1845 Admiral Edward Walpole Browne (1766–1846). J. H. J. Mellaart, Holland, a.1949. German PC; Köln, Lempertz, 17.V.2025, Lot 1074 repr. est. €3–4000) φ



J.64.3768 The sisters, sd 1797 (Sir William Lawrence; London, Christie's, 15.XI.1946, Lot 4 with pendant Charles and his cat; Dale) φ



Photo courtesy Christie's

J.64.3771 ~The whisperers, or the secret, pstl, 76x61, Royal Academy 1799, no. 421 (artist's sale; London, Christie's, 14.II.1807, Lot 109, "the expression admirable, painted with great freedom", 5 gns; Russell; desc.: Mrs Cross, granddaughter of the artist, 1894). Lit.: Williamson 1894, p. 140 n.r. φ



J.64.3773 Folly interrupting Meditation, Royal Academy 1801, no. 418 (artist's sale; London, Christie's, 14.II.1807, Lot 69, b/i)

J.64.3774 Peace and Plenty, portrait of a lady, Royal Academy 1803, no. 431

J.64.3775 Slumber of the aunt permits the clandestine marriage, Royal Academy 1805, no. 241

J.64.3776 Æsculapius, Flora, Ceres and Cupid honouring the bust of Linnæus, m/u, by John Russell and John Opie

~grav. John Caldwell, 1806, for *The temple of Flora*

**Undated, unidentified groups &c. – museums**

J.64.3781 The face of the moon, pstl/ppr, 49.7x35, c.1787 (Greenwich, National Maritime Museum, inv. PAJ 3148) 83.5x66 σφ



J.64.3783 Full moon, pstl/ppr, 46x38 (London, Royal Astronomical Society, Add MS 223/1. Desc.: Rev. S. H. Russell; his widow; Charlbury, 25.IX.1883, Lot 191, b/i; County Court, Oxford, in re *Mallam and Lucas v. Russell*, 1894; London, Christie's, 9.III.1895, Lot 78 n.r., with pendants, 3½ gns; [Rev. Malcolm M. P.] McClean [rector of West Raynham, Norfolk]; don). Lit.: Williamson 1894, p. 140 n.r. σ

J.64.3784 Gibbous moon, pstl/ppr, 46x38 (London, Royal Astronomical Society, Add MS 223/2. Desc.: Rev. S. H. Russell; his widow; Charlbury, 25.IX.1883, Lot 191, b/i; County Court, Oxford, in re *Mallam and Lucas v. Russell*, 1894; London, Christie's, 9.III.1895, Lot 78 n.r., with pendants, 3½ gns; McClean; don). Lit.: Williamson 1894, p. 140 n.r. σ

J.64.3785 Two crescent phases of the moon, pstl/ppr, 46x38 (London, Royal Astronomical Society, Add MS 223/3. Desc.: Rev. S. H.

Russell; his widow; Charlbury, 25.IX.1883, Lot 191, b/i; County Court, Oxford, in re *Mallam and Lucas v. Russell*, 1894; London, Christie's, 9.III.1895, Lot 78 n.r., with pendants, 3½ gns; McClean; don). Lit.: Williamson 1894, p. 140 n.r. σ

**Undated, unidentified groups &c. – order of appearance**

J.64.3787 The Snake in the Grass, pstl (Cunningham Graham of Gartmore; Mr Vernon, Edinburgh; sale p.m., .II.1804). Lit.: *Caledonian Mercury*, 11.II.1804, "a beautiful drawing in crayons, by Russel, being a copy of Sir Joshua Reynolds' celebrated painting...for which Mr Cunningham Graham mentioned having refused an hundred guineas some time before he parted with it to the late possessor". A/r Reynolds pnt., Royal Academy 1784, no. 177 (Tate); ~grav. J. R. Smith 1787

J.64.3788 Laughing and Crying, both from one face (artist's sale, London, Christie's, 14.II.1807, Lot 15, £1/15/-; Vallotton)

J.64.3789 Roman Charity (artist's sale, London, Christie's, 14.II.1807, Lot 16, b/i)

J.64.37892 =?Charity, pstl, 48x39 (?desc.: artist's great-nieces, Elizabeth Anne and Bertha Marianne Russell)

J.64.379 A dog and a butterfly (artist's sale, London, Christie's, 14.II.1807, Lot 20, "highly finished", b/i)

J.64.3791 Flora (artist's sale; London, Christie's, 14.II.1807, Lot 43, b/i)

J.64.3792 View of the Old Sheet Bridge on the Portsmouth Road by Moolt. A beautiful specimen of Mr Russell's talent in landscape, m/u (artist's sale; London, Christie's, 14.II.1807, Lot 64, £4/10/-; Downer)

J.64.3793 Child asleep (artist's sale; London, Christie's, 14.II.1807, Lot 67, b/i)

J.64.3794 =?pstl, 46x61 (Mrs Russell, Guildford c.1910). Lit.: Webb 1910, repr. φ



~study, red chalk (English PC 2023)

J.64.3796 Beggar woman with child, m/u (artist's sale; London, Christie's, 14.II.1807, Lot 111, "painted with peculiar richness and sweet colour", 8 gns; Maitland). Lit.: Williamson 1894, p. 122, as with Lord Galway, ?confused with pendant, Filial piety =?/repl., pnt. (PC 2010)

~cop., watercolour. Lit.: Webb 1910, repr.

J.64.3799 Child reclining in a landscape (artist's sale; London, Christie's, 14.II.1807, Lot 120, "a little lovely specimen; for breadth and sweetness truly Correggioesque", b/i)

J.64.3802 Child with a dog, pstl (Mrs George Keate (1730–1800); legs: Martyn Fonnereau, a.1894). Lit.: Williamson 1894, p. 143 n.r.

J.64.3803 Child, pstl, small ov. (Earl of Ilchester, Holland House, 1894). Exh.: Russell 1894, no. 34 n.r. Lit.: Williamson 1894, p. 148 n.r., Russell "prevailed upon to do a drawing at Holland House, but not liking my company, left early", artist's diary φ



J.64.3805 Head of an unknown child, pstl (Manwaring Shurlock, Chertsey, 1894). Lit.: Williamson 1894, p. 165 n.r.

J.64.3806 Child's head with wings, pstl, 30x25 (Miss Winifred M. Webb, Wimbledon, 1894). Lit.: Williamson 1894, p. 170 n.r.

J.64.3807 Child's head, in white, blue eyes and golden hair, pstl sketch, 16x13 (W. F. Coates, Headingley, 1894). Lit.: Williamson 1894, p. 139 n.r.

J.64.38075 Girl and boy with a basket (County Court, Oxford, 1894, in re *Mallam and Lucas v. Russell*; London, Christie's, 9.III.1895, Lot 75 n.r., 22 gns; E. M. Hodgkins)

J.64.3808 Child, pstl (Gimpel; acqu. Ernest Cronier 1899). Lit.: Gimpel 1963, p. 310

J.64.3809 Hors du jardin (Julius Oehme; New York, Ehrlich Galleires, 12.III.1908, \$480)

J.64.381 Lady and son, pstl (I. M. McLean, 7 Haymarket, London; sale p.m., London, Christie's, 30.I.1909, Lot 31, with pendant, girl, 2 gns; Renton)

J.64.3813 Two children, sketch (desc.: artist's great-grandson, Archibald Arthur Guy Lea (1857–1916), 1909). Exh.: Russell 1909, no. 32

J.64.3816 Satyres, a/r Jordaens, 67x82 (Renton 1911). Exh.: Paris 1911, no. 115

J.64.3817 Bacchantes, a/r Jordaens, 67x82 (Renton 1911). Exh.: Paris 1911, no. 116

J.64.3818 Summer, a landscape, pstl (Asher Wertheimer; acqu. £300, 7.VII.1916, Knoedler, stock book 6, no. 13898, \$1440; sold .XI.1927: Harry Bamberger, New York)

J.64.3823 Two children, pstl (property at 20 Harrington Gardens, London; Knight, Frank & Rutley, 25.XI.1929, 10 gns)

J.64.3824 The two sisters (New York, 2.IV.1931, \$275)

J.64.3825 The surprise, pstl, 75x62 ov. (London, Christie's, 16.II.1934, Lot 31 n.r., 6 gns; Leafe)

J.64.3826 Cottage interior: a young peasant woman in orange dress and blue apron, bending forward to break a stick against her knee before an oven; a window with a candle on the sill at right, pstl, 60x44 (Haas. André J. Seligmann, Paris, acqu. 1925; New York PC; New York, Parke-Bernet, 24.V.1944, Lot 9 n.r., \$100). Exh.: Paris 1919a, no. 218, as *Servante allumant le feu*

J.64.3829 Young woman with child (London, Sotheby's, 23.III.1949, Lot 44; Sabin) φ



*Photo courtesy Sotheby's*

J.64.3837 Rosy, the pet dog of Margaret  
Maskelyne, pstl, 45.7x61 (Crewkerne,  
Lawrence's, 10.X.1996, Lot 355, attr., £2800)