

Neil Jeffares, *Dictionary of pastellists before 1800*

Online edition

REYNOLDS, Sir Joshua

Plympton 16.VII.1723 – London 23.II.1792

Reynolds was a founder and first president of the Royal Academy of Arts in 1768. He was the pre-eminent British portraitist of his generation. Unlike his principal rival Gainsborough (*q.v.*) he does not seem to have worked in pastel, and his disapproval of the medium is well known, notably in his comments on Liotard (*q.v.*). Perhaps surprisingly Reynolds owned a number of pastels (*n.* Index of collectors), among them many sheets by Barocci and Lely which evidently influenced the study of his great-niece where the artist used black, white and red chalk with stump to achieve a very similar effect to pastel.

Reynolds's influence on copyists and followers (from Gardner and Read to amateurs such as Mrs Pickard, *qq.v.*) was immense. This has led to a certain number of errors (presumably those listed below) and confusions (e.g. a chalk self-portrait by Reynolds in the British Museum formerly attributed to John Astley, a fellow-pupil in Hudson's workshop in Rome in 1750, erroneously listed as a pastel).

Bibliography

Bénézit; Edinburgh 2008; Grove; Hallett 2014; Mannings 2000; McIntyre 2003; James Northcote, *Life of Reynolds*, 1819; Waterhouse 1941; Waterhouse 1981; Wright 2006

Monographic exhibitions

Reynolds 1980: *Reynolds*, Paris, Grand Palais, 9.X.–10.XII.1985; London, Royal Academy, 16.I.–31.III.1986. Cat. Nicholas Penny & al.

Reynolds 2005: *Sir Joshua Reynolds: the acquisition of genius*, Plymouth City Museum & Art Gallery, 21.XI.2009 – 21.II.2010. Cat. Donato Esposito & al.

Pastels

J.6174.101 Lady CATESBY, vue de profil à g., pstl/ppr br., 45x36, inscr. "Josua Reynolds 1780" (Eudoxe Marcille 1879–85). Exh.: Paris 1879, no. 672 n.r.; Paris 1885a, no. 81 n.r., as of Milady Cattesby [??]

J.6174.102 Mrs Robert Lowe, née Theophila GWATKIN (1782–1844), the artist's niece, red, white, black chlk, 45.8x3, c.1788 (British Museum, inv. 1902.0212.1). Study for Lesbia

J.6174.103 Emma SNYDE as a little girl, holding a puppy, chlks, 22x18 ov. (Sir Hugo Boothby, Bt, Fonmon Castle, Rhoose, Glamorgan, 1757). Exh.: Cardiff 1948. Lit.: Steegman 1962, p. 99 n.r., traditional attr.

Marchioness TOWNSHEND (comte Louis Caben d'Anvers 1908). Exh.: Paris 1906a, no. 402; Paris 1908a, no. 104, n.r. Lit.: Williamson 1921, p. 91, as Gardner, *q.v.*

J.6174.104 Femme, pstl (Signol 1874). Exh.: Paris 1874b, p. 105 n.r.

J.6174.105 Buste de femme, vue de ¾ à dr.; poitrine découverte, écharpe rouge brun sur les épaules, cheveux frisés tombant sur le front, pstl, cr. noir, 37.6x32 oct. (Diaz. Mme Charras 1879). Exh.: Paris 1879, no. 673 n.r. [??]

Anon. related pastels

J.6174.106 SELF-PORTRAIT in spectacles, crayons, 35.5x28 (Darrill; Christie's, 7.VII.1894, Lot 93, as autograph, 75 gns; Agnew)

J.6174.107 =?self-portrait in crayons [?chlk], 1799 (don: Mr Cribb, the artist's framer, framed with Reynolds's palette; London, Christie's, 1871, Lot 1, 200 gns; Mr Addington)

J.6174.108 ~cop., pstl, 35.5x31 (PC)

J.6174.109 SELF-PORTRAIT, pstl (Fritz Reiss 1906). Exh.: London 1906, upper gallery, no. 22 n.r., as autograph

Duchess of ARGYLL, née Elizabeth Gunning (1733–1790), pnt. (Port Sunlight). Lit.: Mannings 2000, no. 810

J.6174.11 ~cop., pstl, 61x47 (Morony; London, Sotheby's, 14.XII.1927, Lot 53 repr., as Cotes, £10; Keeling) [cf. Read] Φκ



Photo courtesy Sotheby's

Miss [Jane] BOWLES [later Mrs Richard Palmer (1772–1812)] holding a puppy, pnt. (Wallace Collection). Lit.: Mannings 2000, no. 231

J.6174.114 ~cop., pstl, 58.5x44.5 (Lord Ronald Gower, Hammerfield, Peshurst; London, Christie's, 28.I.1911, Lot 6, 46 gns; Amor)

J.6174.115 ~cop., pstl, a/r Reynolds, 61x51 (London, Sotheby's Olympia, 2.VII.2003, Lot 166 repr., with 3 other pstls) 56 Φκ



Photo courtesy Sotheby's

Mrs Wilson Gale BRADDYLL, née Jane Gale (– 1819), pnt. (Wallace Collection, inv. P47)

J.6174.119 ~cop., pstl, 53.5x38.5 ov., s & monogram G (London, Phillips, 9.VII.2001, Lot 73 repr., with another portrait undescribed, est. £800–1200) φπ



J.6174.1191 ~cop., 19th century, pstl, 80x68 (London, Bonhams Knightsbridge, 7.III.2018, Lot 1 repr., est. £1500–2000) φκ

Countess of CHATHAM, née Mary Elizabeth Townshend, v. Townshend

Lady CREWE, née Frances Anne Greville (1744–1818), full length, as St Genevieve, pnt., 1769–72 (PC). Lit.: Mannings 2000, no. 444

J.6174.121 ~version, crayons (Robertson; London, Christie's, 2.VI.1866, Lot 183, b/i; 23.VI.1884, Lot 60, £12; Lord Crewe). Lit.: Algernon Graves, *History of the works of Sir Joshua Reynolds*, 1899, I, p. 208 n.r.

Viscountess CROSBIE, née Diana Sackville (1756–1814), pnt., 1777 (San Marino, Huntington Art Gallery). Lit.: Mannings 2000, no. 1564

J.6174.122 ~cop., pstl/ppr, 1798 (Hillsborough, North Carolina, Leland Little, 6–7.XII.2008, Lot 533 repr., est. £410–620) φ



Countess of DARLINGTON, née Lady Katherine Powlett (1766–1807), ∞ 3rd Earl, later 1st Duke of Cleveland, pnt. (Raby Castle)

~cop., pstl, v. J. R. Smith

William, 5th Duke of DEVONSHIRE (1748–1811)

~cop. W. Lane, *q.v.*

Georgiana, Duchess of DEVONSHIRE (1757–1806)

~cop. W. Lane, *q.v.*

Duchess of DEVONSHIRE, Lady Elisabeth Foster, née Hervey (1757–1824), pnt., 1787 (Chatsworth). Lit.: Mannings 2000, no. 668

J.6174.131 ~cop., pstl (Ickworth, National Trust, ICK/P/151) φκν



Lady Gertrude FITZPATRICK (1774–1841) with a bunch of grapes, pnt. (Port Sunlight). Lit.: Mannings 2000, no. 631, fig. 1242

J.6174.134 ~cop., crayons (Holland House 1820). Lit.: Thomas Faulkner, *History and antiquities of Kensington*, London, 1820, p. 111 n.r.

~cop. Samuel Cotes, *q.v.*

Charles James FOX (1749–1806), pnt., 1782 (Holkham). Lit.: Mannings 2000, no. 674; Ingamells 2004, p. 166f

~cop. Samuel Cotes, *q.v.*

~cop. William Lane, *q.v.*

David GARRICK (1717–1779) between Tragedy and Comedy, pnt., 1761 (Waddesdon). Lit.: Mannings 2000, no. 700, pl. 42

~cop., Daniel Dodd, *q.v.*

~Comedy, pnt. (PC 2000). Lit.: Mannings 2000, no. 702, fig. 532

J.6174.142 ~cop., pstl, 58.4x45.7 (Martin Sheepshanks, London, 1995). Lit.: Mannings 2000, no. 702a

Duchess of GORDON, née Jane Maxwell (1748–1812), with open ruff, pnt. (Goodwood). Lit.: Mannings 2000, no. 744

J.6174.144 ~cop., pstl, crayons, 28x21.5 (F. Gye 1868). Exh.: London 1868, no. 4, as by Reynolds

Mrs Robert Lovell GWATKIN, née Theophila Palmer (1757–1848)

J.6174.145 ~?study, pstl (desc.: Reynolds family, Miss Steele; acqu. Francis Harvey, St James's Street, a.1899) Lit.: Algernon Graves, *History of the works of Sir Joshua Reynolds*, 1899, I, p. 409 n.r.

Sir Frederick HALDIMAND (1718–1791), general, pnt., 1778 (London, NPG). Lit.: Mannings 2000, no. 799, versions

~cop., *Piot, q.v.*

Alexander, 10th Duke of HAMILTON (1767–1852), pnt. (Edinburgh, NGS, inv. 2183). Lit.: Mannings 2000, no. 807

J.6174.146 ~cop., pstl (Chester, Bonhams, 16.VIII.2008, Lot 256 n.r., est. £80–120)

Lady HOLLAND, née Lady Mary Fitzpatrick (1746–1778), in pink dress and blue wrap, pnt., c.1768 (PC). Lit.: Mannings 2000, no. 681

J.6174.149 ~cop., pstl, 51x46 ov. (PC 2012). Attr. Gardner [?; cf. Frances Reynolds] φκ



Photo courtesy owner

J.6174.152 =? anon. pstl (R. Vernon Smith, MP)

~grav. S. Freeman for Walpole, *Letters*, ed. Cunningham, 1866, VI, repr. opp. p. 469

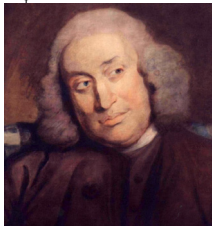
Mrs Williams HOPE, née Anne Godard, pnt. Lit.: Mannings 2000, no. 931

~grav. Hodges 1788

J.6174.154 ~cop., pstl, 85x63 (Henri Lacroix; vente p.m., Paris, Drouot, Chevallier, Paris, 18–23.III.1901, Lot 335 n.r.)

Dr Samuel JOHNSON (1709–1784), author, in a full wig and light brown coat, head, to l., looking up, to r., pnt. (London, NPG). Lit.: Mannings 2000, no. 1011

J.6174.155 ~cop., head, pstl (Lichfield, Samuel Johnson Birthplace Museum). Lit.: Graham A. Wilson, "Blinking Sam. The ocular afflictions of Dr Samuel Johnson", *Archives of ophthalmology*, CXXII/9, 2004, pp. 1370ff repr. φκ



Dr Samuel JOHNSON, in a full wig and light brown coat, ½ length, to left, almost profile, m/u [original not in Mannings]

~grav. F. Bartolozzi, for Johnson's *Dictionary*, 7th ed., 1785

J.6174.159 ~cop., pstl (Lichfield, Samuel Johnson Birthplace Museum. Acqu. Birthplace

Committee 1929). Lit.: *Boswell's life of Johnson*, ed. George Birkbeck Norman Hill & al., 1950, IV, p. 457 n.r.; Percy Laithwaite, *Dr Samuel Johnson and his birthplace*, 1955, p. 24 repr., as Hoare [new attr.; cf. Lamborn] φκ



~grav. Peter Spindelw Lamborn, "from an original drawing"

Angelica KAUFFMAN (1741–1807), holding a sketch of "Fame", pnt., 75.6x62.8 (*olim* Althorp). Lit.: Mannings 2000, no. 1026, fig. 1251

~cop., pstl (*Amsterdam, Christie's*, 7.V.2013, Lot 148 repr., attr. *Bartolozzi*). v. *Bartolozzi*

Duchess of NORTHUMBERLAND, née Lady Elizabeth Percy (1716–1766), full length, pnt. (Syon)

J.6174.166 ~cop., pstl, 38x29 (Alnwick)

J.6174.167 Mrs Thomas ROBINSON, née Mary Elisabeth Darby (1758–1800), actress, waist length, with a muff, crayon, 32x23 (Daniel Parsons 1868). Exh.: London 1868, no. 6, as by Reynolds [?; cf. a/r Romney]

Mrs ROBINSON as Perdita, pnt. (Wallace Collection). Lit.: Mannings 2000, no. 1532

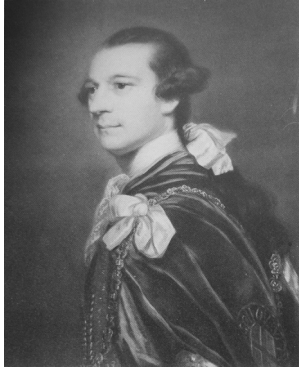
J.6174.169 ~version, cr. vlr/br. ppr, 15.2x12.5 (British Museum 1887.0722.19. W. J. Brooks; acqu. 1887). Exh.: London 1978, no. 91 φ



Charles Watson-Wentworth, 2nd Marquess of ROCKINGHAM (1730–1782), prime minister, FRS 1751, in the robes of a knight of the Garter, pnt. (St Osyth's Priory). Lit.: Mannings 2000, no. 1858

~cop. pnt. (NPG 406); others

J.6174.17 [*olim* J.243.591] ~cop., pstl, 61x49.5 (Rockingham Castle; London, Christie's, 3.II.1922, Lot 11, as by Hoare, 45 gns; Goodison. Montague Meyer family collection; London, Christie's, 18.VI.1980, Lot 67 repr., £1000; London, 14.VI.1983, £400). Lit.: Ingamells 2004, p. 404 attr. Cotes [??attr.] φακ



J.6174.171 ~cop., pstl, 65x44 (Frome, Cooper & Tanner, 18.X.2017, Lot 252 repr., as 19th century, anon., unknown, with copy of

George White, est. £70–100. Salisbury, Woolley & Wallis, 11–12.VIII.2021, Lot 112 repr., est. £400–600) [new attr. 2017, identification] φκν



Hon. Charles TOWNSHEND (1725–1767), chancellor of the exchequer, in a murray velvet robe over a yellow waistcoat, pnt., 72.4x60, c.1767 (PC). Lit.: Mannings 2000, no. 1760, fig. 1740

J.6174.174 ~cop., pstl (W. A. Twiston-Davies, Llangunville, Llanrothal, 1957, 1977). Exh.: Cotes 1971, no. 28 n.r. Lit.: Steegman 1962, p. 148 n.r., as Cotes; Johnson 1972, ?attr.; Kerslake 1977, II, pl. 802, attr.; Jeffares 2006, p. 139Bii, attr. Cotes. A/r Reynolds pnt. [?attr. Cotes; cf. Read; F. Reynolds] φκ

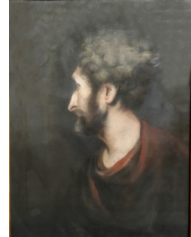


Mary TOWNSHEND, pnt., 1757 (London, Christie's, 22.XI.2006, Lot 26, ??as of Countess of Chatham). Lit.: Mannings no. 1768, fig. 292

~cop., *Pond, q.v.*

George WHITE, as St Peter pnt. (Tate). Lit.: Mannings 2000, no. 2134, fig. 1676

J.6174.175 ~cop., pstl, 61x46 (Frome, Cooper & Tanner, 18.X.2017, Lot 268 repr., as 19th century, anon., est. £70–100) [new attr., identification; comes with copy of Rockingham in same frame] φκ



Mrs Philip WODEHOUSE, née Apollonia Nourse (1751–1817), in a white dress with gold flowers, pnt., c.1772 (London, Christie's, 1.VI.1934, Lot 21). Lit.: Mannings 2000, no. 1921

J.6174.177 ~cop., pstl/ppr, 57x44.5 (pdesc.: sitter's great-grandson, Sir Pelham Grenville Wodehouse a/c to Freeman's; London, Sotheby's, 22.X.1981, Lot 84; Paula Peyraud; New York, Bloomsbury, 6.V.2009, Lot 90 repr., attr., est. \$4–6000, \$3000. Billingshurst, Bellmans, 6–8.IX.2016, Lot 1508 repr., attr. Katherine Read, with two copies of grav., est. £200–300; Philadelphia, Freeman's, 14.VII.2022, Lot 71 repr., est. \$600–1000, \$756, as ex Sir Pelham Grenville Wodehouse; East Dennis, MA, Eldred's, 6.IV.2023, Lot 7005 repr., est. \$2500–3500, b/i; Marlborough, Massachusetts, Bonhams,

4.XI.2024, Lot 21 repr., attr. Read, est. \$1000–1500) φκ



~grav. Charles Turner a.1823

Shepherd boy piping, pnt., 83.8x69.2 (PC). Lit.: Mannings 2000, no. 2156, fig. 1697

J.6174.181 ~cop., pstl/ppr, 62.5x53 (Sir Thomas Lawrence sale, according to label. Copenhagen, Havnen, Bruun Rasmussen, 27.VI.2022, Lot 198 repr., est. DKr3–4000) φκ



The Infant Jupiter, pnt., Royal Academy 1774, no. 225 (Duke of Rutland). Lit.: Mannings 2000, no. 2098

~cop., Margaret Cunliffe, q.v.

J.6174.182 Samuel, crayons, a/r Reynolds (Turner; London, Christie's, 21–23.V.1796, Lot 86, 5 gns; Edwards) [unclear if a/r Calling of Samuel or The Infant Samuel]

J.6174.183 Girl with a muff; & pendant: J.6174.184 The infant Samuel, pstl, 41x33 ov. (Earl of Hardwick; sale p.m., London, Christie's, 27.VI.1924, as autograph, 21 gns; Yorke) [??attr.]

The Infant Samuel, pnt. (London, National Gallery, NG 162, dep.: Tate, inv. N00162. Acq. 1828)

J.6174.186 ~cop. J. Wells Champney, pstl, 48x35.5 (New York, American Art Galleries, 21–22.I.1904, Lot 90 repr.)

Infant Samuel & Angels' head, v. Ann Russell

J.6174.188 Lady in a red dress with blue sash, leaning on a pedestal, full length, pstl, 66x46 (Sir Edward Coates; London, Sotheby's, 22.VI.1922, Lot 35 n.r., a/r Reynolds)

?Robinetta or Lesbia, pnt. (Tate). Lit.: Mannings 2000, no. 2146/2102.

J.6174.19 ~cop., with elements from both pnts., pstl, 77x63 (Earls of Stradbroke –1985; London, Sotheby's, 30.XI.2000, Lot 194 repr., as Robinetta, circle of Russell, traditional attr. to Anna Maria Stradbroke, est. £2500–3500, b/i). Lit.: Jeffares 2006, p. 475B n.r. φπ



J.6174.192 ~cop. J. Wells Champney, pstl, 70x57 (New York, American Art Galleries, 21–22.I.1904, Lot 91 n.r.)

The age of innocence, pnt. (Tate). Lit.: Mannings 2000, no. 2008

J.6174.194 ~cop., pstl, 75x62 (Miss Agnew Laing, 25 Craven Hill, Bayswater; sale p.m., London,

Christie's, 5.II.1910, Lot 116, 2½ gns with another; Lister)

J.6174.195 ~cop., pstl, 63x49 (Cornwall PC 2000).

Lit.: Mannings 2000, no. 2008f n.r.

J.6174.196 ~cop., pstl, 76x63 (London, Bonham's, 7.X.1997, Lot 400). Lit.: Mannings 2000, no. 2008h n.r.

J.6174.197 ~cop., pstl, 73x60 (Edinburgh, Bonham's, 24.X.2010, Lot 547 repr., est. £300–500, £137) φκ



The snake in the grass, pnt.

~cop., Gardner, Russell, qq.v.

J.6174.201 ~cop., pstl, 67x56 ov. (John Muir Hetherington, 19 Upper Grosvenor Street, London; sale p.m., London, Christie's, 1.V.1908, Lot 111 n.r., 40 gns; Leggatt)

The laughing girl; & pendant: J.6174.203 the sleeping girl, pnt. Lit.: Mannings 2000, no. 2072/2077

~cop., Mrs Wright, q.v.

Boy holding a pen, pnt. (PC). Lit.: Mannings 2000, no. 2022, fig. 1584

~grav. Keating 1784

J.6174.207 ~cop., pstl/green ppr, 31.2x26.2 (Austrian art market 1920s; Austrian PC 1971). Lit.:Mannings 2000, no. 2022c n.r., as thought by Waterhouse to resemble work of Daniel Gardner [?green ppr unusual for 18th century work]

Child with Guardian Angels, pnt., Royal Academy 1786 (Duke of Leeds; PC). Lit.: Mannings 2000, no. 2043, fig. 1746

~grav. Hodges 1786. Lit.: van der Feltz 1982, no. 610

J.6174.21 ~cop., pstl, 56x62 (Banbury, JS Fine Art, 28.III.2015, Lot 617 repr., as anon., of Cupid and two children) [new attr.] φκν



J.6174.212 ~cop., pstl, 58x66 ov., inscr. verso 1792 (PC 2021; Wotton-Under-Edge, Auction Rooms, 10–11.VI.2025, Lot 1923 repr., anon., est. £60–100) [new attr. 2021] φκν



J.6174.221 Cupid as a link-boy; & J.6174.222 Mercury as a pickpocket, pstl (E. M. Hodgkins 1910). Exh.: London 1910, no. 109/110 n.r., as by Reynolds