

Neil Jeffares, *Dictionary of pastelists before 1800*

Online edition

PERKINS, Sarah Bushnell, Mrs Lemuel Grosvenor

Plainfield, Connecticut 1771–1831

During the 1790s a series of pastels were executed by Sarah Perkins, mostly of members of her family. One (that of Rev. Nathan Perkins) has a label added by the subject's granddaughter, identifying the artist. Her father was Dr Elisha Perkins of Plainfield, and she may have attended the Plainfield Academy of which he was one of the proprietors. She does not seem to have continued after her marriage to General Lemuel Grosvenor in 1801 – unless she is to be identified with the anonymous Beardsley Limner, active 1785–1805, but stylistic differences cast doubt on this. The work is frankly primitive. Sarah Perkins worked with a very limited palette, using small amounts of colour only for flesh tones.

Bibliography

Bolton 1923; Hartford 1959; Heslip & Kellogg 1984; Rubinstein 1982, p. 43

Pastels

J.5804.101 Betsy Calkins COIT, bust, pstl, 41x27 (Kennedy Galleries, New York, *Kennedy Quarterly*, XI/3, J.1972)

J.5804.102 James BURRILL, Jr (1772–1820), pstl/ppr, 53.5x40 (Rhode Island Historical Society 1980.70.1). Attr.?

J.5804.103 Alpheus HATCH (1750–1797); & pendant: J.5804.104 spouse, née Mehitable Jones, pstl, 55.2x46.4, c.1791 (Norfolk, Chrysler Museum of Art, inv. 80.264.9/10. Edgar William & Bernice Chrysler Garbisch, New York 1961; don 1980). Lit.: Hartford 1959, p. 107 n.r.; *Antiques*, VI.1961, p. 555 repr. φ



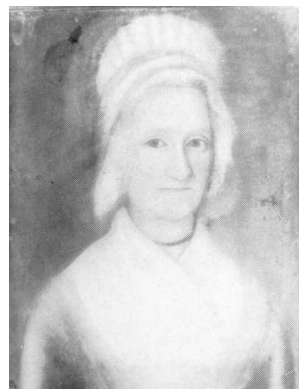
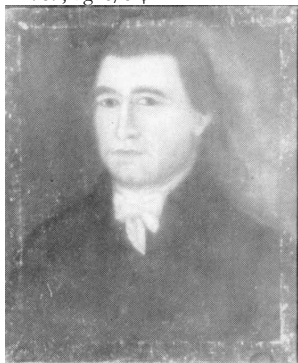
J.5804.107 Andrew PERKINS (1743–1822), merchant, pstl/ppr, 48x38, c.1791; & pendant: J.5804.108 spouse, née Elizabeth Taylor (1761–

1819), pstl/ppr, 48.2x38, ?1791 (New London County Historical Society 1940.19.3/4). Lit.: Hartford 1959, p. 107 n.r.; *Antiques*, VI.1961, p. 554 repr.

J.5804.109 Caleb PERKINS (1749–1819), physician, pstl/ppr, 51.2x39.6, c.1790; & pendant: J.5804.11 spouse, née Sarah Trumbull (1745–1827), pstl/ppr, 51.2x39.6, c.1790 (Hartford, Connecticut Historical Society, 1901-2-1). Exh.: Hartford 1959, fig. 9/10 φ φ



J.5804.113 Elisha PERKINS Jr (1741–1799); & pendant: J.5804.114 spouse, née Sarah Douglas (1744–1795), in a grey dress, white collar, white bonnet, pstl/ppr, 48x40, c.1790 (Hartford, Connecticut Historical Society. Charles Armistead Coit 1959). Exh.: Hartford 1959, fig. 6/5 φ



J.5804.117 Elisha PERKINS Jr (1763–1840), pstl/ppr, 48x40, c.1790 (Hartford, Connecticut Historical Society. Charles Armistead Coit 1959). Exh.: Hartford 1959, fig. 8 φ



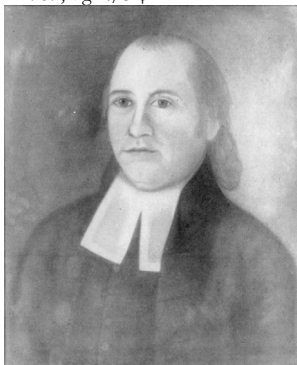
J.5804.119 Joseph PERKINS (1704–1794), physician, pstl/ppr, 45.8x38.3, c.1790; & pendant: J.5804.12 spouse, née Mary Bushnell (1707–1795), pstl/ppr, 46.3x38.5, c.1790 (Historic Deerfield 1367.1/2. Acqu. 1950)

J.5804.121 =?Mrs Joseph PERKINS, née Mary Bushnell, pstl/ppr, 65.4x57.8, c.1790 (Historic Deerfield, inv. 2010.16. Mr & Mrs Charles Armistead Coit 1959. Richardson's, Bourne Auction Rooms). Exh.: Hartford 1959, fig. 7 φ



J.5804.123 Rev. Nathan PERKINS (1748–1838); & pendant: J.5804.124 spouse, née Katherine Pitkin (1757–1837), pstl, 51x42 (the sitters' daughter, Mrs Charles Seymour, née Katherine Perkins (1782–1848); her niece, Mrs Joseph Cook Jackson, née Catherine Perkins Day; her daughter, Mrs Percy Hamilton Goodsell, née Catherine Seymour Jackson; her son Percy

Hamilton Goodsell, Jr 1959). Exh.: Hartford 1959, fig. 4/3 φ



J.5804.133 Lady, pstl/ppr (PC 2016). Attr. φ



J.5804.127 Mrs Bevil SEYMOUR, née Lucy Perkins (1783–1820), pstl/ppr, 48.9x38.3, c.1790 (Hartford, Connecticut Historical Society 1901-2-3). Exh.: Hartford 1959, fig. 11 φ



J.5804.135 Boy, pstl/ppr, 48.9x38.7, c.1790; & pendant: J.5804.136 Girl, pstl/ppr, 49x38.8, c.1790 (Norwich CT, Faith Trumbull Chapter, CT180037/38). Exh.: Hartford 1959, fig. 14/15 φ



J.5804.129 Little boy, whittling a stick, pstl/ppr, 49x41, c.1786–88 (Historic Deerfield 2000.2. Mr & Mrs Charles Armistead Coit 1959. Don Ruth & Douglas Sackman). Exh.: Hartford 1959, fig. 13 φ



J.5804.131 Girl, pstl/ppr, 49x41, c.1790 (Mr & Mrs Charles Armistead Coit 1959). Exh.: Hartford 1959, fig. 12 φ



J.5804.139 Boy with large dog, pstl, 49.5x38.1; & pendant: J.5804.14 Girl with rose, pstl, 49.5x38.1 (New York, Sotheby's, 16–19.I.2003, Lot 698 repr., attr., \$39,000) φ