

# Neil Jeffares, *Dictionary of pastellists before 1800*

## Online edition

### NATOIRE, Charles-Joseph

Nîmes 3.III.1700 – Castel Gandolfo 23.VIII.1777  
Born in Nîmes, the son of Florent Natoire, a sculptor, and Catherine Maurie. A pupil of François Lemoine (*q.v.*), prix de Rome 1721, Natoire became an important history painter on his return to Paris (*agrégé* 1730, *reçu* 1734). In 1751 he returned to Rome as directeur of the Académie de France, succeeding Jean-François de Troy. A sale of pictures took place before his departure, Paris, 11.IX.1751, and included a number of pastels (mostly unattributed, it is tempting to infer that Natoire's output in the medium has been underestimated; in contrast, however, only one pastel seems to have been included in his posthumous sale, Paris, 14.XII.1778). In Rome, Natoire's painting became rather conventional; nor does he seem to have been a particularly efficient administrator. In 1775 Noël Hallé took charge, and Natoire retired to Castel Gandolfo.

Natoire was a prolific draughtsman. Although he exhibited a pastel tête de fantaisie in the Salon of 1743, he seems to have used pastel mainly for studies for other works. However among the drawings he made in various media was a "dessin coloré" which he sent to d'Angiviller 25.I.1775. There may well be confusions between these coloured drawings (which may refer to watercolour, a medium he used for his highly regarded views of Rome), his pastels and those of his sister Jeanne (*q.v.*); others may be by Lemoine.

### Monographic exhibitions

Natoire 1977a: *Charles-Joseph Natoire: peintures, dessins, estampes et tapisseries des collections publiques françaises*, Troyes, musée des Beaux-Arts, .III.–.VI.1977

Natoire 1977b: *Don Quichotte vu par un peintre du XVIII<sup>e</sup> siècle: Natoire*, Compiègne, musée national du château; 14.V.–10.VII.1977. Cat. O. P. Sebastiani & M.-H. Krotoff

### Bibliography

Bellier de La Chavignerie & Auvray; Bénézit; Boyer 1949; Cambridge 1999; Caviglia-Brunel 2012; Duclaux 1991; Grove 1996; Guiffrey 1876; Hanover 1997; Mariette 1851–60; New York 1999a; New York 1999c; Parrocel 1890, II, p. 290ff; Philadelphia 2000a, pp. 535ff; Ratouis de Limay 1946; Sanchez 2004; Toledo 1975; Warsaw 2009; Wright 1992

### Salons critiques

Anon., "Catalogue abrégé des ouvrages de Mrs les peintres... de l'Académie royale de Peinture...", *Mercur de France*, septembre, 1743, pp. 2043–60: [p. 2046] De M. NATOIRE, Adjoint à Professeur. ... 5. Autre petit Tableau au Pastel, représentant une tête de fantaisie.

### Pastels

AUTO PORTRAIT, v. *Mlle Natoire*

1.553.101 Apothéose de Louis de BOULLONGNE, premier peintre du roi, 39x30 (Charles Magne 1897. Paris, Drouot, 25.I.1902, Lot 34. Bourgairel; Paris, Drouot, 15–16.VI.1922, Lot 156. Versailles, Blache, 2.IV.1977, Lot 85 n.r., as Apothéose de Mariette, F7500, all as by Natoire. Paris, Drouot, Castor Hara, 1.VII.2016, Lot 624 bis, entourage de Natoire,

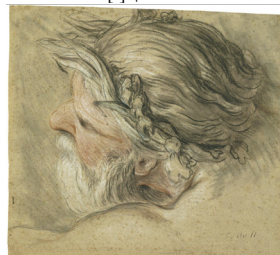
est. €800–1200). Lit.: Perrier 1897, p. 297 n.r., as Apothéose de Mariette; Boyer 1949, no. 496; Caviglia-Brunel 2012, no. D.96 n.r., ??Natoire [?] Φ?αδν



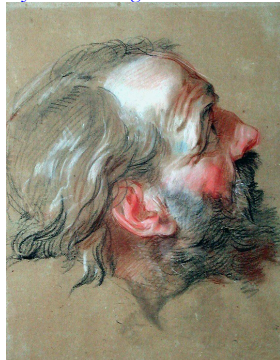
Mariette, v. Boullongne

Louis-Joseph de Montcalm, marquis de MONTCALM, v. Nattier

1.553.105 Head of a sea god, pstl/ppr gr.-br., 26.2x28.6, c.1730–40 (Chicago, Art Institute, inv. 1989.194. Jacques Petit-Hory, Paris. British Rail Pension Fund; Lexbourne Limited, London, acqu. 1989, Regenstein Collection). Exh.: Chicago 1989; New York 1991, no. 22. Lit.: McCullagh 2000, no. 18 repr., attr.; Caviglia-Brunel 2012, no. DR.33 repr., ??Natoire [?] φ



1.553.107 Tête de vieillard, pierre noire, sanguine, pstl/ppr chamois, 38.5x29.1 (Louvre inv. 31384. Pierre-Jean Mariette; vente p.m., Paris, Basan, 15.XI.1775 & seq., Lot 1302, 29 livres 19; Lempereur pour le Cabinet du roi). Lit.: L. Duclaux, *Inv. général*, XII, 1975, Natoire, no. 67; Bordeaux 1984, p. 142, fig. 128, attr. Lemoine; Paris 1991b, as Natoire; Rosenberg 2011, no. F2537, as Natoire; Caviglia-Brunel 2012, no. D.443 repr.; Salmon 2018, no. 109 repr.; Jeffares 2018g. *Olim* attr. Deshayes Φσ



1.553.109 ~cop., pierre noire, sanguine, pstl/ppr bl., 36.8x31.4 (London, Sotheby's, 30.IV.1990, Lot 250 repr., Éc. fr., est. £300–400. Cailleux

1991). Exh.: Paris 1991b, no. 21 repr., attr. Lemoine (J.-L. Bordeaux) Φκσ



Photo courtesy Sotheby's

1.553.112 Amour avec une flèche, pstl, cr. clr, pstl, 27.0x35.1, incr. ↓ 1745 (Didier Aaron 2009) φ



1.553.114 Buste d'un homme, pstl (Davila; Paris, 12.XI.1767 & seq., Lot 587 part). Lit.: Caviglia-Brunel 2012, no. D.933 n.r.

1.553.115 Tête de saint Pierre forte comme nature, pstl (Huquier; Paris, 1–23.VII.1771, Lot 49, 14 livres 19 sols). Lit.: Caviglia-Brunel 2012, no. D.852 n.r.

1.553.116 Jésus enfant, dessin, pstl (Lempereur; Paris, Chariot, Joullain/Boileau, 24.V.–28.VI.1773, Lot 569, 28 livres 19 sols; Montval). Lit.: Caviglia-Brunel 2012, no. D.858 n.r.

1.553.117 Deux têtes de vieillards, pstl/ppr bl. (Lempereur; Paris, Chariot, Joullain/Boileau, 24.V.–28.VI.1773, Lot 578 part, 7 livres 4 sols; Joullain). Lit.: Caviglia-Brunel 2012, no. D.938/939 n.r.

1.553.118 Boy in pink dress, holding a scroll and ring, pstl, 72x53 (Francis Wellesley; London, Christie's, 26.V.1922, Lot 125, 9½ gns; Bell) [Attr.]

1.553.119 Saint Jean-Baptiste enfant, assis à terre, tenant d'une main sa croix, et de l'autre une couronne de fleurs; son mouton est à ses pieds, pstl, 23.6x31.9, s "C. natoire f" (Paignon Dijonval 1810. London, Sotheby's, 23.III.1983, Lot 285 repr.). Lit.: Bénard 1810, no. 3337; Caviglia-Brunel 2012, no. D.444 repr. φ



1.553.1193 Tête de vieillard, pstl, 10x8 (Le Brun Dalbanne, conservateur du musée de Troyes; vente p.m., Troyes, Plivard, 29–31.V.1884, Lot 82 n.r.)

1.553.1194 Tête de jeune homme, pstl, 10x8, s → (Le Brun Dalbanne, conservateur du musée de Troyes; vente p.m., Troyes, Plivard, 29–31.V.1884, Lot 83 n.r.)

1.553.121 Belle tête de femme, pstl (Babault; vente p.m., Paris, Picard, Glomy, 24.I.1763 & seq., Lot 398 part, 7 livres). Lit.: Caviglia-Brunel 2012, no. D.943 n.r., =?Fournelle; Paris, 14.X.1776 & seq., Lot 201

1.553.122 Femme jouant de la vielle, pstl, Salon de Toulouse 1769, no. 19. Lit.: Caviglia-Brunel 2012, no. D.927 n.r.

1.553.125 Tête de femme, pstl (Fournelle; Paris, Joullain, 14.X.1776 & seq., Lot 201 n.r.)

1.553.123 Tête de jeune fille, un ruban bleu aux cheveux, pstl/ppr bl.-gr, 28.2x22.8, inscr. v “C. Natoire f.” (British Museum, inv. 1901,0417.24; PDO 3955. Acqu. Colnaghi 1901). Exh.: London 1968a, no. 492. Lit.: Boyer 1949, no. 587; Caviglia-Brunel 2012, no. DR.68 repr., ??Natoire [??attr.; ?later copy or pastiche] φ?ασ



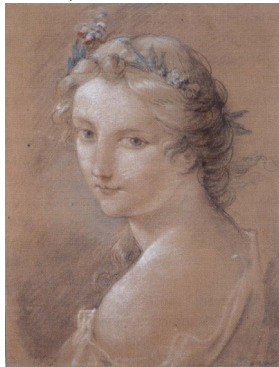
1.553.125 Tête de jeune femme se retournant, c.1740, ink, sanguine, pstl/br. ppr, 32.8x23.5 (Los Angeles, J. Paul Getty Museum, inv. 2003.85, as Natoire. Tonnerre, hôtel des ventes, Devilleneuve, 31.III.2002, as Natoire; Michel-Witold Gierzod; acqu. 2003). Lit.: *Gazette Drouot*, 22.III.2002, p. 163 repr.; S. Caviglia-Brunel, “des finalités du dessin chez Charles-Joseph Natoire”, *Revue de l'art*, 2004/1, 143, pp. 35–48, ill. 9; Auricchio 2009, fig. 14; Caviglia-Brunel 2012, no. D.327 repr., as study for Femme tenant un tambourin, dessin (Louvre inv. 31427) [??; ?attr.] Φσ



1.553.127 Tête de femme, pierre noire, pstl, cr. blanche/ppr bl., 24.7x22.2 (Rennes, mBA, inv. 794.1.2813. Christophe-Paul Gautron, marquis de Robien (1698–1756), Lugt 2137; saisie révolutionnaire 1794). Lit.: Cat. 1884 C 134 no 6; Caviglia-Brunel 2012, no. D.441 repr. Attr. φα



1.553.129 Tête de jeune femme couronnée de fleurs, pstl/ppr, 31.1x24.7, inscr. v “C. Natoire” (Rennes, mBA, inv. 794.1.2599. Christophe-Paul Gautron, marquis de Robien, Lugt 2137; saisie révolutionnaire 1794). Lit.: Cat. 1884 C 136 no. 2; cat. 1972 no. 99; Duclaux 1991, no. 7; Caviglia-Brunel 2012, no. D.439 repr.; Prat 2017, fig. 196. Étude pour Junon dans *L'Histoire des dieux*, pnt. (Troyes). Attr. φ



1.553.131 Vierge, étude pour la Chapelle des enfants trouvés, pstl/ppr bl. (Natoire; vente p.m., Paris, Chariot, Paillet, 14.XII.1778 & seq., Lot 101, 52 livres; Clérisseau). Lit.: Caviglia-Brunel 2012, no. D.424 n.r., Saint-Aubin sketch

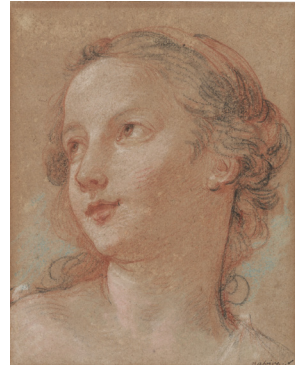
1.553.132 Tête de femme, pstl (de Joubert; Paris, Poulthier, Constantin, 21.I.1793 & seq., Lot 25)

1.553.133 Tête de jeune fille, fleurs aux cheveux, un sein découvert, pstl (Henry Didier; vente p.m., Paris, Drouot, Pillet, 15–17.VI.1868, Lot 139 n.r., H390)

1.553.134 Tête de femme, pstl (M. Fournelle; Paris Joullain, 14.X.1776 & seq., Lot 201, 8 livres 3 sols avec le lot 202; Joullain). Lit.: Caviglia-Brunel 2012, s.no. D.943 n.r., as ?Fournelle/Cournelle

1.553.135 Jeune fille en buste, les épaules nues, les cheveux blonds serrés par un ruban rose, une écharpe l'entoure légèrement. Gracieux pastel, d'une remarquable finesse d'exécution, 55x45 (Arsène Houssaye; vente p.m., Paris, Drouot, Chevallier, 22–23.V.1896, Lot 185, H1250)

1.553.136 Tête de jeune fille, cr. clr/ppr, 17.4x14, s “natoire f.” (Douglas Gordon, US, 1965–84. New York, Christie's, 9.I.1991, Lot 53 repr., \$9000. London, Christie's, 26.I.2022, Lot 187 repr., est. £10–15,000. Geneva, Genève Enchères, 22.IX.2022, Lot 317 repr., est. Swf5–7000). Exh.: Baltimore 1984b. Lit.: Douglas Gordon, “Recollections of a collector”, *Apollo*, 1965, p. 39; Caviglia-Brunel 2012, no. D.441 repr. φ



1.553.14 Tête de fantaisie, Salon de 1743, no. 28. Lit.: Caviglia-Brunel 2012, no. D.336 n.r.

1.553.141 Deux sujets, pstl (Paris, 11.IX.1751, Lot 221, 562 livres 1 sol)

1.553.142 Une jolie tête d'enfant, piquante, & d'un beau coloris, pstl (Carl Heinrich Baron von Heineken; Paris, Remy, 12.XII.1757, 13–18.II.1758, Lot 449 part, 25 livres 5; Remy). Lit.: *Catalogue des tableaux et estampes du cabinet de M. Le B\*\*\**, Paris, 1757, no. 449, “je ne crois pas qu'on trouve mieux de ce Maître”

1.553.143 Deux têtes, pstl (Carl Heinrich Baron von Heineken; Paris, Remy, 12.XII.1757, 13–18.II.1758, Lot 449, Lot 451 part, 8 livres). Lit.: *Catalogue des tableaux et estampes du cabinet de M. Le B\*\*\**, Paris, 1757, no. 451. Lit.: Caviglia-Brunel 2012, no. D.937 n.r.

1.553.144 Tête, pstl (Babault; Paris, Picard, Glomy, 24.I.1763 & seq., Lot 455, 6 livres)

1.553.145 Vénus sur les eaux; & pendant: 1.553.146 Diane au retour de la chasse, pstl, 29x41.2 (Jean de Jullienne; Paris, Martin, Remy, 30.III.–22.V.1767, Lot 959, 96 livres 1; Drouais). Lit.: London 2011a, p. 53; Caviglia-Brunel 2012, no. D.888/889 n.r.

1.553.147 =?Diane (Tournier; Paris, 14.IV.1773 & seq., Lot 319 part)

1.553.148 Deux têtes en regard, pstl (Jean-Baptiste Massé; inv. p.m., AN MC xcvi, 422, 31.X.1767, no. 83, 15 livres). Lit.: Marandet 2003b, p. 298 n.r.

*L'Hiver, & le Printemps* (Jean-Baptiste-François de Montullé; Paris, Le Brun, 22–30.XII.1783, Lot 111, as by Charles Natoire, d'après Rosa Alba) [v. Jeanne Natoire]

1.553.15 Dessin de deux d'enfants, pstl (Blondel d'Azincourt; Paris, 18.IV.1770 & seq., Lot 63, avec dessin de Boucher, 8 livres; Remy). Lit.: Caviglia-Brunel 2012, no. D.936 n.r.

1.553.151 Pastels (Paris, 11.V.1772 & seq., Lot 2 part)

1.553.152 Une très belle tête d'enfant, pstl (Paris, 30.VI.1772 & seq., Lot 60 part, 6 livres 5 sols). Lit.: Caviglia-Brunel 2012, =?no. D.937 n.r.

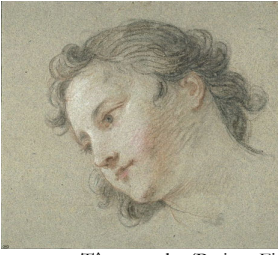
1.553.153 La sainte Vierge avec l'Enfant Jesus, pstl, 48.7x33.8 (Cayeux; Paris, 11–23.XII.1769, Lot 389, 7 livres 19; Cayeux). Lit.: Caviglia-Brunel 2012, no. D.850 n.r.

1.553.154 Deux femmes très-agréables, dont l'une tient une lyre, & l'autre tient une couronne de laurier, pstl, a/r Carriera (Claude-Henri Watelet; Paris, Hayot de Longpré, Paillet, 12.VI.1786 & seq., Lot 57, 192 livres; Galand)

1.553.155 L'alliance de la Peinture & du Dessin, pstl, a/r Carriera (Claude-Henri Watelet; Paris, Hayot de Longpré, Paillet, 12.VI.1786 & seq., Lot 166 part, 82 livres; Paillet)

1.553.156 Tête d'ange, étude, demi pastel (Collet de Langlois-Chere; Paris, 24.IV.1775, Lot 524)

1.553.157 Tête d'ange, reh. de blanc, sanguine, pierre noire, pstl/ppr gr., 23x25.7 (Louvre inv. RF 31406. Saint-Morys; acqu. 1796). Lit.: Caviglia-Brunel 2012, no. D.431 repr. φ



J.553.159 Tête, pstl (Paris, Fichon, Joullain, 8.III.1779 & seq., Lot 96 part)

J.553.16 Tête ou portrait, pstl (Paris, Girardin, Basan, 12.XI.1781 & seq., Lot 274 part, 5 livres 2)

J.553.161 Bacchanale; & pendant: J.553.162 Triomphe de Bacchus, dessins coloriés (vente Natoire 1776; Mesnard de Clesle; vente p.m., Paris, rue Saint-Étienne, coin du Boulevard Poissonnière, 1.I.1804 & seq., Lot 18 n.r.)

J.553.163 Deux têtes, pstl, 27.1x16.2 (Paignon Dijonval 1810). Lit.: Bénard 1810, no. 3354 part

J.553.164 Tête, étude, pstl (Nicolas-Charles Silvestre; inv. p.m., 25.V.1767, item 170 [part]; son fils, Jacques-Augustin de Silvestre; vente p.m., Paris, Regnault-Delalande, Geoffroy, 28.II.–25.III.1811, Lot 429 n.r.)

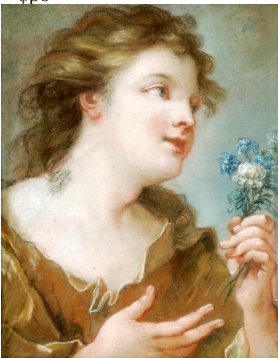
J.553.165 La Musique, dessin et pstl, 29x37 (Charles-Philippe, marquis de Chennevières (1820–1899); Paris, Drouot, Chevallier, Féral, 5–6.V.1898, Lot 115 n.r., Fr400)

J.553.166 Bacchante et Amour, pierre noire, pstl, 27x38 (Calando; Paris, 1899, Fr665)

J.553.167 Maternité, pstl, 55x63 (Versailles, Cheval-Légers, Chapelle, 24.XI.1963, Fr3000) ?Flore, pnt. (São Paulo); & ?Zéphyre, pnt. (*olim* Louvre)

J.553.169 ~?version (*boy*), Tête de Zéphyre, pstl/ppr bl. (Mme Lancret; Paris, Frémin, Remy, 5–16.IV.1782, Lot 180, 4 livres 16)

J.553.17 ~cop. (*boy*), pstl/ppr bl., 40.5x32 (Vienna, Dorotheum, 5.III.2009, Lot 169, circle of Carriera, with pendant, est. €6–8000, b/i. Donnington, Dreweatts, 14.XII.2010, Lot 1016 repr., as of Flora, follower of Luti, 38.5x31, £1200–1800, £900; Galerie de Bayser, Salon du dessin, 2011, as by Natoire; PC; Paris, Artcurial, 9.VI.2021, Lot 6 repr., as autograph, est. €50–80,000). Lit.: Caviglia-Brunel 2012, no. D.223, repr. p. 36, as autograph, c.1735–36 φβσ



J.553.172 ~cop. (*girl*), pstl/ppr, 40.5x32 (Vienna, Dorotheum, 5.III.2009, Lot 169, circle of Carriera, with pendant, est. €6–8000, b/i. PC 2009; Donnington, Dreweatts, 14.VII.2010, Lot 53 repr., follower of Carriera, £1200–1800, £1200 [=£1440]. London, Christie's South Kensington, 9.XII.2010, Lot 1142 repr., follower of Natoire, est. £2–3000, £2250; Galerie Alexis Bordes, Paris; cat. 2011, no. 12 repr., as by François Lemoine; Paris, Artcurial, 9.VI.2021, as by Natoire). Lit.: Caviglia-Brunel

2012, no. D.224, repr. p. 264, as autograph, c.1735–36 φβσ



J.553.174 ~cop. (*girl*), Jeune fille, fleurs aux cheveux, pstl, 44x37, c.1780 (Geneva, Blavignac, 26.X.2006, Lot 359 repr., éc. de Boucher, est. SwFr400–500; Geneva, Hôtel des ventes, 9.III.2011, Lot 1152 repr., anon.XIX<sup>e</sup>, est. SwFr600–800) φκν



#### Anon. related pastels

LOUIS, duc de Bourgogne, dauphin (1729–1765), pnt., 1747 (Versailles, MV 3791). Lit.: La Tour 2004, p. 25 repr.

~*La Tour*; pstl, *Salon de 1746*, no. 124, q.v.

J.553.181 Deux figures de femmes, vues à mi-corps, pstl (Aubert; Paris, Hugues, Paillet, 2.III.1786 & seq., Lot 133, manière de Natoire, Lot 133, 87 livres; Paillet)