

# Neil Jeffares, *Dictionary of pastellists before 1800*

## Online edition

### MOREAU le jeune, Jean-Michel

Paris 26.III.1741–30.XI.1814

Younger brother of the landscape and genre painter Louis-Gabriel Moreau (they were the sons of Gabriel Moreau, maître perruquier, and Marie-Catherine Villemot). He travelled to St Petersburg with his teacher Louis-Joseph Le Lorrain, where at the age of 17 he was appointed professeur at the Académie impériale. On his return he was active as an engraver in Le Bas's studio. Among the subjects he engraved were pastels by Greuze, of Mme Greuze, and Méréelle, of the printer Prault's son-in-law Dominique Pineau, whose daughter Françoise-Nicole (known from Nattier's pastel) Moreau married on 1.IX.1765. He was appointed dessinateur du cabinet du roi in 1770. According to the *Almanach des peintres* of 1776: "Cet artiste, d'un talent très distingué, est actuellement occupé des dessins pour le sacre du Roi, dont il a été chargé par la Cour... Il grave aussi à l'eau-forte avec succès."

A report published in the *Journal de Paris*, 1.V.1780, pp. 503f noted that Moreau had presented some of his works to the Académie royale 29.IV.1780 (not recorded in the Procès-Verbaux). In addition to the "compositions immenses" of various ceremonials, he added a large number of drawings and engravings, "& même quelques têtes peintes en pastel de grandeur naturelle." He was however not agréé by the Académie royale as an engraver until a year later, 29.IV.1781, and not reçu until 1789. In 1797 was made professeur at the École centrale. His daughter married Carle Vernet in 1787.

Moreau's skill as a draughtsman is today well known (he left some 2000 drawings), but his pastels are rare.

#### Bibliography

Bénézit; Cambridge 1999; Grove 2000; Guiffrey 1915, p. 398f; Heller-Greenman 2002; Lemoine-Bouchard 2008; Mahéroult 1880; New York 1999a; Sanchez 2004

GENEALOGIES [Pineau](#)

#### Salons critiques

Anon., Exposition de la place Dauphine, *L'Avant-Coureur*, 16.VI.1760, p. 347:

Les tableaux de MM. Moreau, Lenoir & Lantara, & de M<sup>les</sup> Hallet & Girouard, sont ceux qui ont paru mériter, préféablement aux autres, l'attention des connoisseurs....

Anon., Exposition de la place Dauphine, *L'Avant-Coureur*, 1.VI.1761, pp. 345ff:

Mrs Moreau freres se sont distingués tous les deux dans des genres differents, ils possèdent l'un & l'autre le dessin à un degré qui n'est pas ordinaire...

#### Pastels

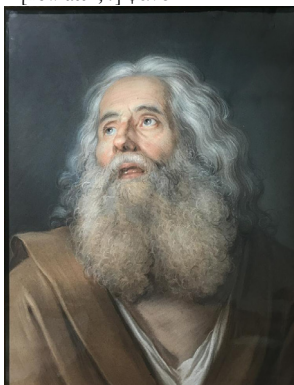
J.544.101 John Paul JONES (1747–1792), naval officer, pstl, white chlk/ppr, 26x20.6, sd v "JM Moreau Le Jeune 1780 an mois de May", Salon de 1781, no. 303 (New Orleans, Louisiana State Museum, inv. 9657A). Exh.: Detroit 1851, no. 283; Toronto 1972. Lit.: Ingamells 2004, p. 297 repr. φ



JOHN PAUL JONES.  
Tels hommes rarement le peuvent presenter,  
Et quand le ciel les donne, il faut en profiter.

~grav. Moreau & J.-B. Fosseyeux 1781. Lit.: Bocher 1883, no. 18 n.r.

J.544.104 Tête de saint Pierre, pstl/ppr, 55.8x46 (Geneva, mA, inv. 1855-0006. Don Jean-Marc du Pan: Bibliothèque 1838). Lit.: Cat. musée Rath 1859, no. 68 n.r., as by Liotard; Humbert, Revilliod & Tilanus 1897, no. 94 n.r.; R&L R83, éc. fr. XVIII<sup>e</sup>; Jeffares 2009 [new attr., ?] φανσ



J.544.106 Tête d'un apôtre, pstl/ppr, 57.5x47.5, sd "M. Moreau L. Jeune 1773" (Moscow, Pushkin Museum, inv. Ж-1032. Paris, Féral, 4.VI.1878, h.c.; F168. D. I. Zhikin, Moscow, – 1918; acqu. 1924). Lit.: Mahéroult 1880, no. 586 n.r.; Данилова 1995, p. 283 repr. φ



J.544.108 Tête d'un apôtre, 60x49.5, sd "J. M. Moreau. 1773" (Hermitage, inv. OP-42138. Paris, Féral, 4.VI.1878, h.c. D. I. Zhikin, Moscow, –1918. Acqu. 1934). Exh.: St Petersburg 2001, no. 40 repr. Lit.: Mahéroult 1880, no. 587 n.r.; Каменская 1960, no. 82 repr. φ



J.544.11 Deux études de vieillards, pstl, Salon de 1781, no. 302. Lit.: Mahéroult 1880, no. 585

J.544.111 Femme, étude, pstl, Salon de 1781, no. 302. Lit.: Mahéroult 1880, no. 585