

Neil Jeffares, *Dictionary of pastellists before 1800*

Online edition

MARTIN, James

fl. New York 1794–1820

From England, Martin arrived in New York c.1794, and produced portraits in “Oil, Water, or Crayon from \$1 to \$50” according to his advertisement in the *New Jersey journal*, 23.IX.1795 (“miniature painter from New York, late of Fleet Street, London”). In the *New-York daily advertiser* for 12.V.1797, he advertised—

Portrait Painting pleaseng and striking likeness taken to any size in crayons or pestols on moderate terms, at No 8, Wall-street, nearly opposite the presbyterian church, by Mr. Martin, from London. Profile shades taken at 1 dollar each, one minutes sitting only required. Miniatures neatly executed.

He is probably the same as the Martin, from Sheffield, recorded by Bolton 1923 as a portrait draughtsman in pastel in New York between 1797 and 1808: “although his work was poor it was in steady demand”. Some of his pastels show distinctive backgrounds of red blending into blue. Two pastels in Martin’s style bear an improbable, later inscription attributing them to an obscure artist, David Swope (1771–1845), by whom no work is securely known.

Bibliography

Bolton 1923; sales catalogues, New York, Sotheby’s, 20.I.2002, s. Lot 1268; New York, Christie’s, 3.X.2007, s. Lot 69

Pastels

J.519.101 Jonathan Jarman HANN of Bridgeton (New Jersey State Museum). Lit.: New York, Sotheby’s, 20.I.2002, s. Lot 1268, n.r., as by same hand as Stretch

J.519.1025 Dr Samuel HARRIS (?) of Philadelphia, pstl, 60.3x49.5 (Marlborough, Massachusetts, Skinner, 20.vii.2017, Lot 184 repr., anon., est. £300–500, \$461) [new attr.] φαν

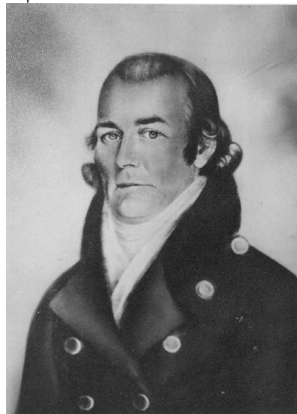


J.519.102 George HOLLINSHEAD of Woodstown (Salem County Historical Society, New Jersey). Lit.: New York, Sotheby’s, 20.I.2002, s. Lot 1268, n.r., as by same hand as Stretch

J.519.103 Anthony LISPENARD (c.1740–1806), brewer and property developer in New York, pstl, 59x50 oct. (Antique Associates at West Townsend 2012, attr.) φ



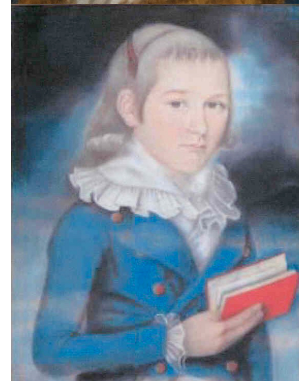
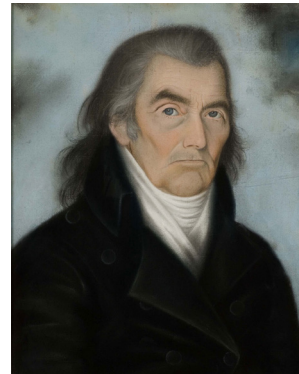
J.519.105 Captain Joseph NOYES (1758–1820), son of Judge William Noyes, pstl, c.1798 (n/k) φ



J.519.107 Mrs Mary Ann NOYES (1768–1819), pstl/ppr, c.1798 (PC) φ



J.519.109 Judge William NOYES (1728–1807); & 3 pendants: J.519.11 his spouse, née Eunice Marvin (1735–1816); J.519.111 William Noyes III (1792–); J.519.112 his spouse, née Abigail Leverett (1786–), each pstl/ppr 51x41, c.1798 (Old Lyme, Connecticut, Florence Griswold Museum. New York, Sotheby’s, 30.I.1994, Lot 948; Geoffrey Paul; New Hampshire, Northeast Auctions, 4.VIII.2002, Lot 617, \$25,000; acqu.) Φ



Photos courtesy Sotheby’s

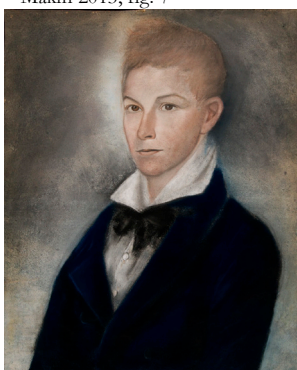
J.519.118 Richard STOCKTON, Jr (1764–1828), of Princeton, lawyer, Senator for New Jersey 1796–99 (Newark, New Jersey Historical Society). Exh.: Newark 1982, no. 14 repr., anon. Lit.: New York, Sotheby’s, 20.I.2002, s. Lot 1268, n.r., as by same hand as Stretch φ



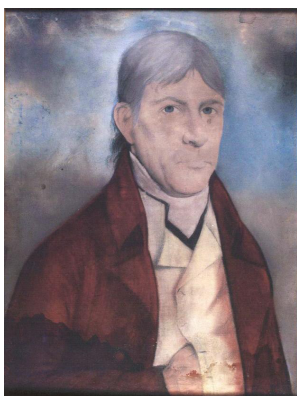
J.519.12 Joseph STRETCH (1758–1815), pstl/ppr, 69.8x53.3, c.1805 (New York, Sotheby's, 20.I.2002, Lot 1268 repr., American sch., est. \$20–30,000) [new attr.] φ



J.519.122 Garrison WRIGHT, pstl/ppr, 60x45, c.1818 (Freehold, New Jersey, Monmouth County Historical Association). Lit.: Choi & Makin 2013, fig. 7



J.519.124 Englehardt YEISER (c.1747–1807), wine merchant in Baltimore; & pendant: J.519.125 spouse, née Anna Catherine Maria Keener (1754–1820), pstl/ppr, 62.2x46.5, c.1800–03, inscr. *verso* as by David Swope (Colonial Williamsburg Foundation, inv. 2009.200.1/2. Desc.: Mrs Melvin Lee Steadman, Jr; Washington/Baltimore, C. G. Sloan & Co., 1–3.x.1977?, lot 1585; Robert & Linda Simmons, Arlington; acqu. 2009) φ



J.519.128 Man from North Weymouth, Massachusetts, in a blue uniform, pstl, 62.9x50.5, c.1790 (Norfolk, Chrysler Museum of Art, inv. 80.264.8. Don Edgar William & Bernice Chrysler Garbisch, New York) [new attr.] φv



J.519.13 Man in a blue coat, pstl/ppr, 54.5x42.5, c.1810 (Providence, Rhode Island School of Design, inv. 2000.81. Acqu. Georgianna Sayles Aldrich Fund) φ



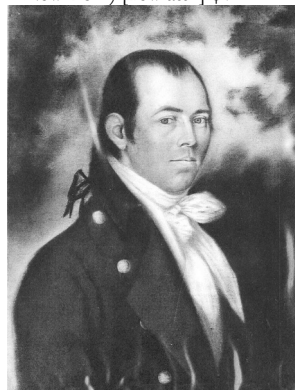
J.519.132 Young boy with blue eyes in a blue costume, pstl/ppr, 61x44.5 (New York, Sotheby's, 23.X.1994, Lot 209 repr., attr., est. \$2–3000, \$1900) φ

J.519.134 Gentleman, pstl, 73.7x55.9 (New York, Christie's, 3.X.2007, Lot 69 repr., attr., est. \$4–6000, b/i) φ

J.519.136 Gentleman, pstl, 73.7x55.9 (Freehold, New York, Carlsen Gallery, 6.IV.2014, Lot 66 repr., attr. Micah Williams, est. \$1–2000) [new attr.] φ



J.519.138 Homme en uniforme bleu, pstl, 64.2x47.6, c.1790; & pendant: J.519.139 Dame en chapeau, châle bleu, pstl, 63.8x47.6, c.1790 (Baltimore Museum of Art, inv. 1972.78.10/11, Dutch sch., repr./n.r. Don Edgar William & Bernice Chrysler Garbisch, New York) [new attr.] φv



J.519.141 Gentleman in blue coat; & pendant: J.519.142 lady in black dress, white cap, pstl, 58.5x48 ov. (Downington, Pook & Pook, 6.X.2012, Lot 908 repr., anon., est. \$1500–2500) [new attr.] φv





J.519.145 Four portraits (Salem County Historical Society, New Jersey). Lit.: cat. for New York, Christie's, 3.X.2007, *s.no.* Lot 69