

Neil Jeffares, *Dictionary of pastellists before 1800*

Online edition

LIBERI, Pietro

Padua 1605 – Venice 18.X.1687

Fresco painter, working mainly in Venice. A group of drawings with pastel in the Louvre, formerly belonging to Baldinucci, are attributed either to him or to Sebastiano Mazzoni (*q.n.*). Using pastel over chalk, these exhibit a characteristic luminosity and wide range of colour. Mariette thought he influenced Carriera (*q.n.*).

Bibliography

Bénézit; Ruggieri 1996; Ruggieri 2001

Pastels

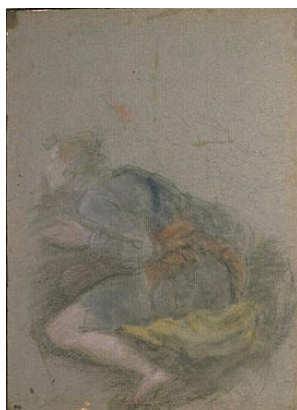
J.4834.101 David coupant la tête de Goliath, pstl, bl. chlk/bl. ppr, 29.5x25.4 (Louvre inv. 5016). Lit.: Monnier 1984, p. 17 repr., as by Mazzoni φα



J.4834.103 Deux jeunes filles s'embrassant parmi d'autres femmes en mouvement, pstl, bl. chlk/bl. ppr, 29.5x20.5 (Louvre inv. 5020. Filippo Baldinucci). Exh.: Paris 1958, no. 59; Roma 1959, no. 67 φα



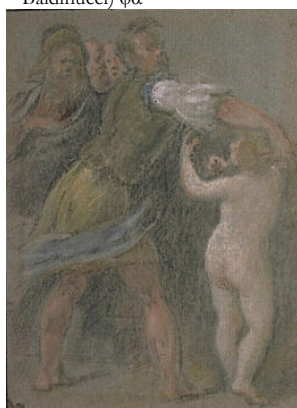
J.4834.105 Jeune homme accroupi, tourné vers la gauche, regardant avec attention, pstl, bl. chlk/bl. ppr, 30x21.7 (Louvre inv. 5017. Filippo Baldinucci) φα



J.4834.107 ?La Charité, pstl, bl. chlk/bl. ppr, 29.5x20.2 (Louvre inv. 5021. Filippo Baldinucci) φα



J.4834.109 Homme tenant un enfant nu, debout, et trois autres figures, pstl, bl. chlk/bl. ppr, 26.5x19.7 (Louvre inv. 5018. Filippo Baldinucci) φα



J.4834.111 Jeune femme appuyé sur une demi colonne et deux hommes, pstl, bl. chlk/bl. ppr, 29.6x20.7 (Louvre inv. 5019. Filippo Baldinucci) φα

