

Italian School

Named sitters

J.94.1001 La contessa ABRIANI, née Diamante Dotto (1670–p.1759), pstl/ppr, 62x49, 1759 (Padua, Musei Civico, inv. 2019. Abriani, Padua; don 1923). *Olim* attr. Carriera. Exh.: Padua 1997, no. 782 repr., pittore veneto, XVIII, cf. Pavona φ



J.94.1003 Gregorio Giovanni Gaspare BARBARIGO (1625–1697), patrizio veneto, cardinale, pstl/ppr, 39.5x29.5, inscr. *verso* as by Carriera 1689 by Mgr Fontana (Padua, church asset. Alessandro Comm. dalla Costa; don 1891) φ



J.94.1005 [?][Sig.ra] Francesco BARTOLINI [Baldelli, née Maria Maddalena Giraldi, nipote del fondatore della biblioteca], pstl/ppr, 59x46, sd *verso* “Domenico Tempesto Fecit Anno 1700”/- (Giovanni & Gabriella Barilla; London, Sotheby’s, 14.III.2012, Lot 357 repr., as by Tempesti, with pseudo-pendant, est. £2500–3500, b/i; London, 25 Blythe Road, 17.XII.2012, Lot 1 repr., with pseudo-pendant, est. £400–600) [?attr.; ??identification, ?late 18th century] φδσ



~pseudo-pendant, v. *Tempesti*

J.94.1008 Cavaliere Anton [Vincenzo BARTOLINI BALDELLI (1691–1764)]; & pendant: **J.94.1009** spouse, née Anna Maria Luisa Serristori (1722–1798), pstl, 59x46, inscr. *verso* “Cavaliere Antonio/Figlio del Senator Francesco”/“Anna Serristori/Consorte del Cavaliere Antonio” [p.1741] (Giovanni & Gabriella Barilla; London, Sotheby’s, 14.III.2012, Lot 360 repr.,

est. £3–5000, b/i; London, 25 Blythe Road, 17.XII.2012, Lot 2 repr., est. £400–600) [cf. Baldacci] φσ



J.94.1012 Leopolda Medici BERRIGHELLI, pstl/ppr, 44.5x35.5 (Uffizi, inv. 1890, no. 4320) φ



J.94.1014 Fanciullo dei BORBONE di Napoli, pstl/ppr, 51x43 ov. (Uffizi, inv. 1890, no. 5124) φ



J.94.1016 Marco Alessandro del BORRO (–1701), generale, governatore di Livorno, con parrucca, armato e pezzuola di trina al collo, pstl, 1 2/3 soldi high (Uffizi, inv. 1769, no. 2025)

J.94.1017 ?Angelo BOUCHERON (1776–1859), artist, pstl/ppr, 43.5x35.5, c.1800 (Turin, Musei Civici, inv. 4192. Don Marianna Boucheron 1914). Exh.: Turin 1980, no. 250 repr., anonimo [cf. G. B. Boucheron] φ



J.94.1021 Johann Ludwig Joseph Graf von COBENZL (1753–1809), ambassadeur d’Autriche à Saint-Petersbourg 1779–97, pstl/ppr, 53x41.5, a.1793 (Gorizia, Palazzo Coronini Cronberg. Cobenzl; legs 1810). Exh.: Gorizia 1956; Gorizia 1981, no. XII/9 repr., as by Vigée Le Brun [A/r pnt.; cf. Lampi; versions and engravings] φ



J.94.1023 Bartolomeo, detto Bortolo, CORNET, consul de Venise à Marseille, pstl/ppr, 44x33, 1790 (Venice, Ca’ Rezzonico, inv. Cl. I n.1131) φ



J.94.1025 Don FELIPE de Borbón, infante, duc de Parme, de Plaisance et de Guastalla (1720–1765), pstl/ppr bl., 92x73.2 (Louvre inv. 35482, dep.: Versailles MV 5937, inv. DESS 1059. Acqu. Madrid 1845, Louis-Philippe). Exh.: Versailles 1997, no. 28. Lit.: Salmon 1997a, no. 35, Italian sch.; Malinverni 2010, fig. 2; Salmon 2018, p. 333 [cf. Baldrighi, Roslin; Inza] φσ



J.94.1027 FERDINANDO de Medici (1663–1713), gran’principe Granduca di Toscana, pstl, 66.5x50 (Fredensborg. Acqu. Frederik IV, Italy, 1709). Lit.: Olsen 1961, pl. LXXXVII d, as of Gian Gastone, ?attr. Carriera [?]; cf. *Tempesti*] φ



J.94.1029 FERDINANDO III [Joseph Ferdinand III, granduca de Toscane 1790 (1769–1824)], pstl (Marchese Pietro Francesco Rinuccini; sale p.m., *Galleria Rinuccini, Catalogo dei quadri*, 1852, scuola fiorentina; no. 54 n.r.)

J.94.103 ?Elisabeth FONTANA, pstl/ppr, 18.4x13.2 (Dublin, NGI, inv. 6817). Lit.: Le Harivel 1983, repr., Italian sch., c.1650 [cf. Leoni] φ



J.94.10305 [*olim* J.372.117] Unidentified knight of Malta [??FREDRIK Adolf, hertig av Östergötland (1750–1805)], pstl, 52x41 (Munich, Hampel, 26–27.III.2004, Lot 1740 repr., as of Stanislaw Leszczyński, est. €900. Boris Wilnitsky). Lit.: Jeffares 2006, p. 219Civ, as =?Fredrik Adolf, by Hall, comm. C. F. Adelcrantz 1766 [?attr., ?identification; Italian sch., cf. Pavona; same hand as **J.94.1031**] Φ?δv



~pendant, **J.94.1042**

J.94.1031 ?Giambattista GALLARATI SCOTTI (1720–1777), pstl, 70x50 (PC). Exh.: Tiepolo 2020. *Olim* attr. Carriera [cf. Pavona; Carlevarijs; Sartori; Baldacci; same hand as **J.94.10305**] φδ

J.94.10315 Nicolaus GALTERI (1688–1744), physician and botanist at Pisa, pstl.
~grav.: C. Facci a/r G. Tranallesi a/r anon. Lit.: Burgess 1973, p. 148

J.94.1032 Gavardo da GAVARDO (1701–1736), FRS, pstl, 45x33, 1736 (inv. 3108). Lit.: Giuseppe Pavanello & al., *Istira: Città maggiori...*, 2001, p. 113, no. 181 modi di Jacopo Amigoni φ



~repl., pnt. (Pokrajinski muzej Koper)

J.94.1035 GIAN GASTONE de' Medici, Granduca di Toscana (1677–1737), pstl (ancienne collection de la maison d'Orléans). Lit.: Charles-Gaffiot & al. 2003, p. 146 repr. [cf. Luz] φ



J.94.1037 Nicolò Antonio GIUSTINIANI (1712–1796), vescovo, pstl/ppr, 51.8x37.7 (Bergamo, church asset) φ



J.94.1039 Carlo GOLDONI (1707–1793), commediografo, pstl, 1750 (Milan, Museo teatrale alla Scala) φ



J.94.1041 Carlo GOLDONI, pstl (n/k) φ



J.94.1042 [*olim* J.372.132] Unidentified knight of Malta [??KARL XIII, hertig av Södermanland, konung av Sverige (1748–1818)], pstl/ppr, 52x42 (Boris Wilnitsky Kunsthandel, Vienna, 2005, as Karl XIII, by Lundberg). Lit.: Jeffares 2006, p. 220Aii, as =?Karl XIII, by Hall, comm. C. F. Adelcrantz 1766 [?attr.; Italian sch., cf. Pavona; same hand as **J.94.10305**] Φ?δv



~pendant, **J.94.10305**

J.94.1043 Dott. Giambattista LAMBERTINI, pstl, 48x35 (Italian church asset) φ



J.94.1044 John LANGLOIS (1716–1789), pstl (sitter's brother-in-law, Anthony Lefroy)

J.94.10441 Anthony LEFROY or Leffroy (1703–1779), Huguenot merchant in Livorno; & pendant: **J.94.10442** spouse (∞ 1738), née Elizabeth Langlois (1720–1782), pstl, ?1738 (sitter; will 1779: “my my picture the family picture and my wives and brother John Langlois picture in pastello which I order to be sent to England and kept with the other family pictures that are at Canterbury”; desc.: family 1980). Lit.: J. A. P. Lefroy, “Anthony Lefroy 1703–1779: merchant at Leghorn, collector of works of art, member of the Etrusca Accademia”, *Proceedings of the Huguenot Society of London*, XXIII/4, 1980, p. 241 n.r.

J.94.10448 Francesco Antonio LANTIERI (–1729), conte capitano, pstl (*olim* Gorizia). Lit.: Tronkar 2013, n.r.

J.94.1045 ??Mme Jean-Guillaume LE BLOND, mère du consul français à Venise, pstl/ppr, 57x45 (Venice, Accademia, inv. 712, cat. no. 446. Vincenzo Omoboni Astori; legs 1888, as Carriera). Lit.: Moschini Marconi 1970, no. 34, fig. 33 repr.; Nepi Scirè 2009, p. 378 n.11 n.r. [new attr., ?] φ



J.94.1047 Principe del LICHTENSTEIN [?]Joseph Wenzel I. Lorenz Fürst von u. zu Liechtenstein 1748 (1696–1772)], pstl, 56x45 (Italian state asset) φ



J.94.1049 Marchesa de LOS BALBASES, pstl (Filippo III Colonna, Rome, inv. 1783)

J.94.105 Luigi XIII [LOUIS XIII (1601–1643)], con Parrucca, Collaro, pstl (Orsini, Rome, inv. 9.XII.1822)

J.94.1051 Conte Francesco Maria [MAMIANI DELLA ROVERE], pstl (Conte Francesco Maria Mamiani della Rovere, Urbino, 1.VII.1624)

J.94.1052 [?]MARIA AMELIA GIUSEPPINA [?Marie-Joséphine-Louise de Savoie, “Madame” (1753–1810)], pstl/ppr, 32x26 ov. [c.1780] (Italian state asset, location n/k) φ



J.94.1054 MARIA KLEMENTYNA Sobieska (1702–1735), ∞ James Francis Edward Stuart, “James III”, pstl, ?c.1722 (Alboa House, Earl of Mar and Kellie). Lit.: Kerslake 1977, p. 181 n.r.

1.94.1055 MARIA KLEMENTYNA Sobieska, pstl (Duchess of Albany; inv. p.m., 17.XI.1789, item 190). Lit.: Corp 2011, p. 305

1.94.1056 MARIA LEOPOLDINA Erzherzogin von Österreich (1776–1848), Gemahlin von Karl Theodor von Bayern, pstl, 48.5x40 (princesse Pio de Savoia; London, Sotheby's, 5.VII.2000, Lot 253 repr., Austrian sch., est. £900–1200, £1560) Φ



Photo courtesy Sotheby's

1.94.1059 MARIA LUISA, granduchessa di Toscana, née di Borbone di Napoli (1773–1802), pstl/ppr, 30x25 (Uffizi, inv. 1890, no. 5293) Φ



1.94.1061 MARIA LUISA, pstl/ppr, 51x43 ov. (Uffizi, inv. 1890, no. 5125) Φ



1.94.1063 MARIA THERESIA Johanna Josephine, regina di Sardegna, née Erzherzogin von Österreich (1773–1832), pstl, 61.5x48 (Princess Pio de Savoia. London, Sotheby's, 5.VII.2000, Lot 251 repr., Italian sch., est. £800–1200, £1260) Φ



Photo courtesy Sotheby's

1.94.1066 MARIA THERESIA Königin von Sachsen, née von Habsburg (1767–1827), pstl/ppr, 40x33 ov. (Italian state asset) Φ



1.94.1068 ?MARIE-ANTOINETTE (1755–1793), en buste, à dr., pstl, 33.3x25.5 (London, Phillips,

12.XII.1990, Lot 105 n.r., follower of Luti, est. £1000–1500)

1.94.1069 Il padre Stanislao MATTEI (1750–1825), francescano, compositore, pstl/ppr, 45x37 (Bologna, Civico museo bibliografico musicale, inv. B38474). Exh.: Bologna 1984, no. 36 repr. Lit.: Bianconi & al. 2018, no. 152 repr. Φ



Il marchese Bartolomeo MOLINARI (1683–), wearing the Deutscher Orden, v. Austrian sch., Charles-Alexandre

1.94.1074 Homme de la famille ?OBIZZI; & pendant: 1.94.1075 femme, pstl/bois, 43.5x34 (Vienna, KHM, GG-6648/6647) Φ



1.94.1078 Livio ODESCALCHI, duca di Ceri e di Bracciano (1653–1713), pstl, small (Livio Odescalchi, inv. 1713, no. 1386). Lit.: Roethlisberger 1986, p. 19 n.r.

1.94.1079 D. Flavio ORSINI con corvatta al collo, pstl (Principessa Orsini, née Anne-Marie de La Trémoille, Rome, inv. 1723. Orsini, Rome, inv. 9.XII.1822)

1.94.108 Consorte [di D. Flavio ORSINI], pstl (Principessa Orsini, née Anne-Marie de La Trémoille, Rome, inv. 1723. Orsini, Rome, inv. 9.XII.1822)

1.94.1081 Tre ritrattini con perucche di casa ORSINI, pstl (Principessa Orsini, née Anne-Marie de La Trémoille, Rome, inv. 1723. Orsini, Rome, inv. 9.XII.1822)

1.94.1082 Dama della famiglia PATRIZI-MONTORO, pstl/ppr, 60x45 (Patrizi di Montoro, Rome, 2000). Lit.: Pedrocchi 2000, no. 218 repr., anon., as of Porzia Patrizi (1752–1835), Sani 2009, p. 109 n.r., identification uncertain Φ



~pendant Giovanni Chigi Patrizi-Montoro, v. Liotard.

1.94.1085 Ottavio Piccolomini, duca d'Amalfi, Reichsfürst PICCOLOMINI-PIERI (1599–1656), pstl/ppr, 67x55 (Uffizi, inv. 1890, no. 3092, corridoio Vasariano) Φ



1.94.1087 Cardinal Seniore RANUZZI, pstl (Conte Girolamo Ranuzzi, Bologna, inv. 13.III.1788)

1.94.1088 Conte Annibale RANUZZI, pstl (Conte Girolamo Ranuzzi, Bologna, inv. 13.III.1788)

1.94.1089 RANUZZI, pstl (Annibale Ranuzzi, Bologna, inv. 19.IV.1698)

1.94.109 Eleonora Marisa SASSI, née contessa Abriani, pstl/ppr, 62x49, c.1759 (Padua, Musei Civico, inv. 2020. Abriani, Padua; don 1923). *Olim* attr. Carriera. Exh.: Padua 1997, no. 778 repr., pittore veneto, XVIII, cf. Pavona Φ



1.94.1091 Two ladies of the SPINOLA di Genova family, pstl (Serre; Carlhian & Beaumetz; acqu. 1901 Duveen Bros, £79/11/9; London stock no. 21376; sold 7.X.1901)

1.94.1092 Monsieur Subleras [Pierre SUBLEYRAS (1699–1749), peintre]; & pendant: 1.94.1093 moglie, [née Maria Felice Tibaldi (1707–1770)], pstl, 44.7x33.5 (Cardinale Silvio Valenti Gonzaga, Rome, inv. 1760, no. 266/267). Lit.: Pietrangeli 1961; Lesur 2023, no. 39/40 MFTI, attr. Mme Subleyras [cf. Mme Subleyras]

1.94.1094 Cardinale VALENTI, pstl, 37.2x27.9 (Cardinale Silvio Valenti Gonzaga, Rome, inv. 1760, no. 18)

1.94.1095 Contessa di VALLESA, née Costanza Salomone de Serravalle (c.1770–1843), ∞ 1792 Alessandro Vallesa, conte di Montalto (1765–1823), pstl, 44.5x34.5, inscr. *verso* (Vigna Corte di Bonvicino, Moncalieri, Turin; contents sale, London, Sotheby's, 17.XI.2008, Lot 38 repr., circle of Pécheux) [circle of Berger; cf. Pécheux] Φ



1.94.1097 Violante di Baviera [VIOLANTA Beatrix von Bayern (1673–1731), wife of Gran'Principe Ferdinando de' Medici], pstl (Giulio Pannilini, Siena, 30.V.1784) [cf. Fratellini; Tempesti]

1.94.10975 Homme en habit noir, de la famille VITI, pstl (Volterra, Palazzo Viti) Φ

1.94.1098 Le chevalier baron Christian WENGER de Wengis, pstl, 56x43, 1758, (Paris, Tajan, 17.XI.2008, Lot 91 repr., Éc. vénitienne XVIII^e, est. €1200–1500, €2107) Φ



Unknown men – museums

1.94.1102 Testa di vecchio con turbante, pstl/ppr, 56.4x42.5 (Uffizi, inv. 1890, no. 2565. Careggi

1761; Uffizi 1882). Lit.: Sestieri 1973; Berti 1979, Ic627 repr., Florentine sch., 18th century, ?Tanfani [Pa/r Gherardini suggested on Uffizi database; cf. L. Tiepolo] Φ



Photo su concessione del Ministero dei Beni e le Attività Culturali; reproduction forbidden

J.94.1105 Un peintre, pstl, 73x58.5, c.1720 (Uffizi, inv. 9455 2565. Anna Olivetti, attr. Nogari; acqu. c.1944). Lit.: Berti 1979, A844 bis repr., Florentine sch., 18th century Φ



Photo su concessione del Ministero dei Beni e le Attività Culturali; reproduction forbidden

J.94.1108 Bambino con cuffia, pstl/ppr, 32.5x24.5 (Uffizi, inv. 1890, no. 5729, maniera di Francesco Ignazio Bavarese detto Borgognone) Φ



J.94.1111 Giovane uomo, pstl/ppr, 53x40 (Uffizi, inv. 1890, no. 2548) Φ



J.94.1112 Giovane uomo in armatura, pstl/ppr, 73.5x61 (Uffizi, inv. 1890, no. 2570, corridoio Vasariano) Φ



J.94.1114 Uomo con turbante, pstl/ppr, 69.5x59 (Uffizi, inv. 1890, no. 2574, corridoio Vasariano) Φ



J.94.1116 Condottiero, pstl/ppr, 56x44 (Uffizi, inv. 1890, no. 4230) Φ



J.94.1118 Fanciullo, pstl/ppr, 44.5x35.5 (Uffizi, inv. 1890, no. 4364) Φ



J.94.112 Vecchio, pstl/ppr, 43x32 (Uffizi, inv. 1890, no. 4366) Φ



J.94.1122 Giovane uomo, pstl/ppr, 49x37 (Uffizi, inv. 1890, no. 5163) Φ



J.94.1124 Uomo, pstl/ppr, 25x19 (Uffizi, inv. 1890, no. 5357) Φ



J.94.1126 Uomo con parrucca bianca, pstl/ppr, 25x19 (Uffizi, inv. 1890, no. 5786) Φ



J.94.1128 Vecchio, pstl/ppr, 23x17 (Uffizi, inv. 1890, no. 6503) Φ



J.94.113 San Pietro, pstl/ppr, 43x34 (Uffizi, inv. 1890, no. 6714) Φ



J.94.1132 San Matteo e l'angelo, pstl/ppr, 54x44 (Uffizi, inv. 1890, no. 6721) Φ



J.94.1134 Vecchio, pstl/ppr (Uffizi, inv. 1890, no. 8304) Φ



J.94.1136 Head of a child, ¾ to g., pstl/ppr, 20.4x15.2 (Haarlem, Teylers Museum, inv. D 23). Exh.: Amsterdam 1934, no. 1 n.r., as Barocci. Italian sch., 17th century

J.94.1139 Gentiluomo, pstl/ppr, 62x49 (Padua, Musei Civico, inv. 2018. Abriani, Padua; don 1923). *olim* attr. Carriera. Exh.: Padua 1997, no. 781 repr., pittore veneto, terzo quarto XVIII Φ

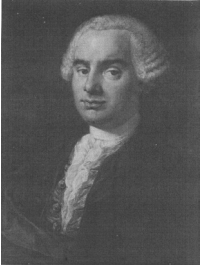


.J94.1141 Gentiluomo, pstl/ppr, 46x34.8 (Padua, Museo Civico, inv. 2048). Exh.: Padua 2005, no. 507 repr. φ



.J94.1143, v. J.53.341

.J94.1145 Man with a gold earring, pstl, 60x46 (Providence, Rhode Island School of Design, inv. 54.147.91. Legs Miss Ellen Dexter Sharpe). Lit.: J. Mason, "Five European portraits from the eighteenth century", *Bulletin of the Rhode Island School of Design*, XLII/2, XI.1955, pp. 1–12, fig. 3; Bowron 1980, n.r. [olim attr. Mengs; reattr. Federico Zen; ??] φ



.J94.1147 Bambino, pstl (Turin, Fondazione Pietro Accorsi, inv. D-892) φ



.J94.1149 Kopf eines Engels, pstl (Vienna, Albertina, inv. 43975)

.J94.115 Giovane, pstl, 46x33.5 (Italian state asset) φ



.J94.1152 Giovane, pstl, 40x30 (Italian state asset) φ



.J94.1154 San Rocco, pstl, 42x35 (Italian church asset) φ

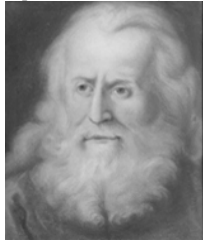


.J94.1156 Cristo coronato di spine, pstl/ppr, 44x30 (Italian state asset) φ



.J94.1158 Testa di moro, pstl, 31x23, c.1750 (Italian public collection)

.J94.1159 Testa di vecchio, pstl, 31x23 (Urbino, public collection) φ



Unknown men – order of appearance

.J94.1162 S. Francesco, pstl (Cardinale Alessandro d'Este, Rome, inv. aft..v.1624)

.J94.1163 Dodici quadretti con dodici teste di Apostoli con N.ro Sig.re, pstl (Duca Francesco Sannesio, Rome, inv. 19.II.1644)

.J94.1164 Testa di S. Paolo, pstl (Cardinale Girolamo Mercuri, Rome, inv. 25.VI.1682)

.J94.1165 Testa di soldato, pstl (Cardinale Girolamo Mercuri, Rome, inv. 25.VI.1682)

.J94.1166 Un vecchio, pstl (Carlo de Rossi, Rome, inv. 27.X.1683)

.J94.1167 Due disegni cioè due huomini nudi, pstl (Marchese Alessandro Facchinetti, Bologna, inv. 19.V.1685)

.J94.1168 Uomo che tiene un berrettino spaccato nella fronte, pstl (Cardinale Carlo Pio di Savoia, Rome, inv. 1.III.1689). ?Michelangelo or Raffael

.J94.1169 Uomo di prima barba, pstl (Cardinale Carlo Pio di Savoia, Rome, inv. 1.III.1689). ?Michelangelo or Raffael

.J94.117 Huomo vecchio calvo con barba lunga pare un frate, pstl (Cardinale Carlo Pio di Savoia, Rome, inv. 1.III.1689). ?Michelangelo or Raffael

.J94.1171 Testa d'huomo, che guarda in sù con barba e capelli rossi, pstl (Cardinale Carlo Pio di Savoia, Rome, inv. 1.III.1689). ?Michelangelo or Raffael

.J94.1172 Vecchio con barba, capelli canuti, pstl (Cardinale Carlo Pio di Savoia, Rome, inv. 1.III.1689). ?Michelangelo or Raffael

.J94.1173 Atlante che sostiene il mondo, pstl (Lorenzo Onofrio Colonna, Rome, inv. 1689)

.J94.1174 Huomo con turbante in testa, pstl (Cardinale Carlo Pio di Savoia, Rome, inv. 1.III.1689)

.J94.1175 Mezza figura d'un S. Pietro con un libro in mano, pstl (Lorenzo Onofrio Colonna, Rome, inv. 1689)

.J94.1176 S. Gio: Batta, pstl (Lorenzo Onofrio Colonna, Rome, inv. 1689)

.J94.1177 Testa di un Christo incoronato dispine, pstl (Lorenzo Onofrio Colonna, Rome, inv. 1689)

.J94.1178 Testa di vecchio, pstl (Cardinale Carlo Pio di Savoia, Rome, inv. 1.III.1689)

.J94.1179 Due Teste di due Giovani, pstl (Federico Beroaldi, Conte e Cavaliere dei SS. Maurizio e Lazzaro, Bologna, inv. 15.I.1695)

.J94.118 S. Giovannino, pstl (Federico Beroaldi, Conte e Cavaliere dei SS. Maurizio e Lazzaro, Bologna, inv. 15.I.1695)

.J94.1181 Testa d'un giovane, pstl (Cardinale Domenico Maria Corsi, Rome, inv. 11.XII.1697)

.J94.1182 Testa d'uomo attempato, pstl (Cardinale Domenico Maria Corsi, Rome, inv. 11.XII.1697)

.J94.1183 Head of a putto, pstl/bl. ppr., 24x16 (Livio Odescalchi, inv. 1713, no. 1217). Lit.: Roethlisberger 1986, p. 19 n.r.

.J94.1184 Head of a putto, pstl/bl. ppr., 24x16 (Livio Odescalchi, inv. 1713, no. 1218). Lit.: Roethlisberger 1986, p. 19 n.r.

.J94.1185 Testa di Huomo, pstl (Emilio, Principe Altieri, Rome, inv. 13.IX.1721)

.J94.1186 Doi quadri Rapp.ti doi Uomini, pstl (Principessa Orsini, née Anne-Marie de La Trémoille, Rome, inv. 1723)

.J94.1187 Huomo con collaro all'antica, pstl (Principessa Orsini, née Anne-Marie de La Trémoille, Rome, inv. 1723)

.J94.1188 Mezza figura del Signore, pstl (Principessa Orsini, née Anne-Marie de La Trémoille, Rome, inv. 1723)

.J94.1189 Testa, e poco busto d'huomo con capelli rossi, pstl (Principessa Orsini, née Anne-Marie de La Trémoille, Rome, inv. 1723)

.J94.119 Testa del Salvatore, pstl (Marchesa Eleonora Silvestri Fabi, Rome, inv. 7.X.1743)

.J94.1191 Due teste d'uomini con mezzo busto, pstl (Sforza Giuseppe I Sforza Cesarini, Duca di Marsi, Rome, inv. 7.IX.1744)

.J94.1192 Un cardinale, pstl (Sforza Giuseppe I Sforza Cesarini, Duca di Marsi, Rome, inv. 7.IX.1744)

.J94.1193 Testa di un vecchio con falco, pstl (Marchese [Vincenzo?] Riccardi, Florence, inv. 1752)

.J94.1194 Un jeune Jésuite d'une illustre naissance, pstl, par un Maître Italien (Paris, Hayot de Longpré, Joulain, 8.VII.1777 & seq., Lot 37, 14 livres 19)

.J94.1195 Testa di un ragazzo, pstl (Contessa Zambecari, née Angelica Teresa Zanchini, Bologna, inv. 17.II.1783)

.J94.1196 Testa d'un giovane, pstl (Contessa Zambecari, née Angelica Teresa Zanchini, Bologna, inv. 17.II.1783)

.J94.1197 Mons., ora cardinale, pstl (Conte Girolamo Ranuzzi, Bologna, inv. 13.III.1788)

.J94.1198 Ritratto di nano, pstl (Conte Girolamo Ranuzzi, Bologna, inv. 13.III.1788)

.J94.1199 Deux études de têtes d'hommes mendiants, pstl/ppr, 19x16.2 (Paignon Dijonval 1810). Lit.: Bénard 1810, no. 355 [part], école romaine

- 1.94.120 Uomo con parrucca, e collaro, vestito di nero, pstl (Orsini, Rome, inv. 9.XII.1822)
- 1.94.1201 Uomo, e collaro all'antica, pstl (Orsini, Rome, inv. 9.XII.1822)
- 1.94.1202 Uomo, pstl (Orsini, Rome, inv. 9.XII.1822)
- 1.94.1203 Uomo, pstl (Orsini, Rome, inv. 9.XII.1822)
- 1.94.1204 San Francesco d'Assisi con ritratto avanti, pstl (Principe Giuseppe Rospigliosi, Rome, inv. 1.V.1833)
- 1.94.1205 Un cardinale, pstl (Principe Giuseppe Rospigliosi, Rome, inv. 1.V.1833)
- 1.94.1206 Due ritratti d'uomini, pstl (Conti di Cervignasco Della Chiesa, Torino, c.1850)
- 1.94.1207 Musicien avec flute, avec des livres inscr. "Rollin, Dante, Locke, Newton", pstl, 55x43 (conte Lodovico Miari, Padua, 1911). Exh.: Florence 1911, repr. Tav. V, attr. Carriera Φ



- 1.94.1209 Head of an angel (Colnaghi 1960, as Luti). Lit.: Bowron 1980, n.r., ??Luti
- 1.94.121 Homme en manteau, pstl, 63x48 (Paris PC. Zabert, Turin, cat., 1970 repr., as *Éc. fr.*) Φ



- 1.94.1212 Christ au roseau, pstl, 48x35 (Paris, Drouot Rive Gauche, Ader, Picard, Tajan, 24.VI.1977, Venetian sch., ff2800)
- 1.94.1213 Youth playing the mandolin, pstl, 72.5x55.5 (London, Christie's, 7.VII.1981, Lot 154 repr., Bolognese sch., est. £700–1000) Φ



- 1.94.1215 Cupid, pstl, 42x35.8 (London, Christie's, 4.VII.1984, Lot 157 n.r., Roman sch., early 18th c., £216)
- 1.94.1217 Bambino con colomba, pstl/ppr (Sestieri, Rome; Viancini, Venice 1986) Φ



- 1.94.1218 St John the Baptist, pstl, black chlk, 63x44.3 (London, Phillips, 12.XII.1990, Lot 2 n.r., follower of Luti, est. £150–250)
- 1.94.1219 Man, half-length, wearing an embroidered waistcoat, pstl, 60.7x45.2 (London, Phillips, 12.XII.1990, Lot 136 n.r., Venetian sch., 18th century, est. £250–300)
- 1.94.122 Apollo with a lyre, pstl/ppr, 78x62.5 ov. (London, Phillips, 7.VII.1993, Lot 167 repr., est. £800–1000; London, Phillips, 26.X.1993, Lot 214 n.r., est. £300–500) Φ



- 1.94.1222 Head of a bearded man, pstl/ppr bl. gr, 26.9x24.9, s ?"C.C..." (New York, Christie's, 12.I.1995, Lot 101 repr., circle of Luti, est. \$8–12,000, \$8050) Φ



- 1.94.1224 Head of Christ, pstl, 33.8x29.0 (London, Christie's, 3.IV.1995, Lot 70 n.r., circle of Luti, est. £500–800)
- 1.94.1225 Homme en habit brun, pstl, 33.5x26, inscr. "R. Mengs", c.1780 (Conte Andrea Busiri Vici, Rome). Lit.: Roettgen 1999, EX276, ??Mengs
- 1.94.1226 Head of a bearded man, pstl, 37.8x26.8 (London, Sotheby's, 22.IV.1998, Lot 134, Venetian sch., late 17th century, est. £700–900, £1150)
- 1.94.1227 Head of a Franciscan monk, pstl/ppr gr./bl., 36.0x27.0 (London, Christie's, 7.VII.1998, Lot 171 repr., as Spanish sch., 17th century, est. £1500–2000; London, Christie's South Kensington, 16.IV.1999, Lot 33 repr., circle of Barocci, est. £700–1000) Φ



- 1.94.1229 Officier au tricorne, pstl (Swiss PC) Φ



Photo courtesy owner

- 1.94.1232 Head of a monk, pstl/ppr bl., 39.3x27.5 (Erzherzogin von Sachsen-Weimer u. Eisenach; desc.; London, Christie's South Kensington, 10.XII.2004, Lot 340 repr., circle of Luti, est. £1000–1500) Φσ

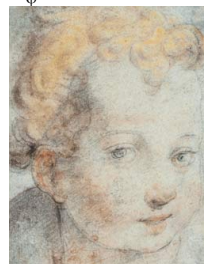


Photo courtesy Christie's

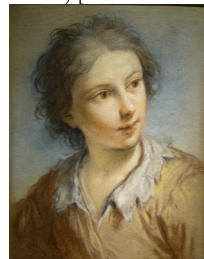
- 1.94.1235 Jeune homme en habit bleu, pstl/ppr, 55.5x44 (German sale, 4.XI.1992, as Rosalba. Italian sale, 25.IV.1993, as Rosalba. Milan, Finarte, 2.XII.2002, as Carriera, inconnu; Röbbig, Munich; cat. 2003, pp. 22–24; Masterpiece fair, London, 2016, ?George or Charles Townshend) [?attr.] φα?δσ



- 1.94.1237 Tête d'homme, trois crayons, pstl, 37.5x25.6 (Paris, PIASA, 18.III.2005, Lot 8 n.r., entourage de Barocci, est. €1000–1200)
- 1.94.1238 Tête d'enfant, pstl, 18.5x14 (Paris, PIASA, 18.III.2005, Lot 11 repr., *Éc. italienne XVI^e*, est. €2500–2800) [cf. cavaliere d'Arpino] Φ



- 1.94.124 Le Christ rédempteur, pstl, 74x92 (Paris, Tajan, 18.III.2005, Lot 19 n.r., suiveur de Carlo Dolci, est. €1800–2200)
- 1.94.1241 Young man, pstl/ppr (Jean-Luc Baroni 2006) [follower of Luti] Φσ



- 1.94.1243 Head of man, bl., red chlk, pstl/ppr (Jean-Luc Baroni 2006) [follower of Caracci; cf. cavaliere d'Arpino] Φσ



J.94.1245 Head of a bearded man, pstl/ppr, 42.6x27.8 (Vienna, Dorotheum, 3.X.2006, Lot 57, attr. Luti, est. €3600–3800) φ



J.94.1247 Boy with a pearl, pstl, 39x30.5 (PC 2006) φ



J.94.1249 Gentiluomo, pstl/ppr, 59x44 (Giancorrado Forin Galli, Rome, 2006, as circle of Rosalba Carriera) φ



J.94.1251 Cardinal, pstl/ppr, 60x44 (7.XII.1993, attr. Tempesti. Solesino, Veneto Arte, 19.V.2007, Lot 89 repr., attr. Carriera, €5000) [cf. Baldacci] φ



J.94.1253 Tête de jeune garçon, pstl/ppr bl., 26.9x21.3 (Paris, Christie's, 10.IV.2008, Lot 20 repr., Italian sch., est. €2–3000) φ



J.94.1255 Surgeon holding a skull and a trephine, an elevator and a book inscribed "Opere chirurgiche" on the table, pstl/ppr, 70.1x57.4 (London, Bonhams Knightsbridge, 29.X.2008, Lot 192 repr., North Italian sch., est. £2–3000, b/i; London, Bonhams, 21.I.2009, Lot 700 repr., est. £1000–1500) φ



J.94.1257 Uomo, pstl/ppr, 40.5x28.5 (Genoa, Wannenes, 24.II.2009, Lot 81 repr., pittore veneto del XVIII secolo, est. €1000–1500) φ



J.94.1259 Jeune ecclésiastique, pstl, 54x41 (Paris, Drouot, Rieunier, 7.XII.2009, Lot 100 repr., attr. Carriera, est. €3–4000, b/i; Paris, Drouot, Rieunier, 22.III.2010, Lot 27 n.r., attr. Carriera, est. €2–3000, b/i; Paris, Drouot, Wapler, 18.XII.2012, Lot 89 repr., attr., est. €1500–2000) [cf. Carriera portraits of Agostino Suarez, abate, Sani 246; ?pastiche] φ



J.94.1261 Homme en habit avec brandebourgs, tenant une lettre ou un billet, pstl, 62x51 (Köln, Lempertz, 21.VI.1990, circle of Mengs. Bruxelles, Pierre Bergé, 24.XI.2010, Lot 37, éc. italienne, c.1760, est. €1000–1500) φ



J.94.1263 Gentiluomo, pstl, 64x57 (Milan, Palazzo Clerici, Christie's, 25.XI.2011, Lot 51 repr., est. €5–7000) φ



J.94.1265 Head of a young man, pstl/bl. ppr, 37x30.5 (New York, Sotheby's, 30.I.2013, Lot 238 repr., Florentine sch., 17th century, est. \$20–30,000, \$31,250) φ



J.94.1267 Uomo, pstl/ppr, 60x50 (PC 2013) [cf. Garemijn, Noël] φ



J.94.1271 Head of a bearded man, ?saint, pstl, 39x31.2 (Gräfin Bernstorff, Grapow. PC 2015; Luzern, Fischer, 17–19.VI.2015, Lot 1023 repr., est. SwFr 2000–2500; Luzern, Fischer, 25–27.VI.2015, Lot 1607repr., est. SwFr 1200–1400). ?A/r Italian old master pnt. φ



J.94.1273 Saint Joseph tenant un bâton fleuri [Head of a bearded man, holding a club decorated with Myosotis flowers], pstl/ppr, 30.4x25.4 (PC 2015 Paris, Drouot, Boisgirard Antonini, 24.VI.2015, Lot 41 repr., éc. vénitienne, as of saint Joseph, identifies club as his attribute, est. €3–4000; Paris, Tajan, 15.X.2015, Lot 39 repr., éc. romaine c.1700, entourage de Luti, est. €1000–1500; Paris, Drouot, Massol, 15.IV.2016, Lot 11 repr., inconnu, est. €800–1900; Paris, Drouot, Leclere, 9.XI.2018, Lot 64 repr., inconnu, suiveur de Luti, est. €600–900; Paris, Drouot, Millon, 25.VI.2020, postponed to 7.IX.2020, Lot 44 repr., inconnu, éc. vénitienne, est. €600–800). ?A/r Italian old master pnt. φ



J.94.12772 Head, pstl/ppr, 38x28 (London, Chiswick Auctions, 27.VIII.2020, Lot 46 repr., Emilian sch., mid-18th century, est. £600–800, £27,500) φ

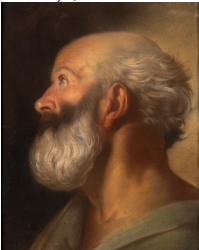


J.94.12773 Garçon, costume de hussard, pstl/ppr, 46x37 (Genoa, Wannenes, 21.XII.2020, Lot 1090 repr., attr. Rosalba Carriera, est. €3–5000) [??attr.] φ



J.94.12774 A prelate, pstl/ppr, 38x28 (PC Genoa 2021) φ

J.94.12775 Bearded man, pstl/ppr, 46.5x39 (Rome, Bertolami, 14.V.2021, Lot 67 repr., est. €1500–2000) φ



J.94.12776 Bearded man in a turban, pstl/ppr/cardboard, 44.8x36.2 (Mrs Adelaide Gabriel, with pendant. Etwall, Hansons, 18.V.2023, Lot 3006 repr., as 19th century Italian sch., est. £100–150, £500; London, Roseberys, 22.XI.2023, Lot 76 repr.; London, Roseberys, 27.III.2024, Lot 105 repr., circle of Liotard, est. £250–350) φ



J.94.12777 Man in brown coat, fur stole, pstl/ppr, 52x41 (Milan, Lucas, 19.IX.2024, Lot 854 repr., as French or German sch., est. €750–1200) [?; Italian sch.] φ



Unknown women – museums

J.94.128 La Charité, jeune femme se pressant le sein, pstl/pchm, 77.1x60.7 (Aix-en-Provence, musée Granet. Don J.-B. Bourignon de Fabregoules 1860). Exh.: Aix 1974, no. 96 n.r., École piémontaise XVIII^e

J.94.1281 Vergine orante, pstl, 54x42.1 (Ascoli Piceno, Pinacoteca civica, inv. 662. Palazzo dell'Arengo; dep.: Prefettura di Ascoli Piceno). Lit.: Stefano Papetti, *Meraviglie d'Italia "Ascoli Piceno" Pinacoteca Civica, Musei d'Italia*, 1995, no. 335, ?follower of Nicola Monti (1736–1795) φ



J.94.1283 Head of a woman in a turban, pstl/ppr bl., 11.6x9.1 (Cambridge, Fogg Art Museum, 1982.418. Legs Isabella Grandin). [Italian sch.], 16th century φ

J.94.1285 Tête de femme, profil, pstl/ppr, 33.8x26.5 (Dublin, NGI, inv. 3871). Lit.: Le Harivel 1983, repr., Italian sch., 18th century φ



J.94.1287 Donna, pstl/ppr, 28x26 (Uffizi, inv. 1890, no. 1527). *olim* attr. Cigol; F. Vanni φ



J.94.1289 Donna, pstl/ppr, 55x42 (Uffizi, inv. 1890, no. 2543) φ



J.94.1291 Fanciulla con fiori, pstl/ppr, 49x39 (Uffizi, inv. 1890, no. 4229) φ



J.94.1293 Fanciulla con gatto e un topo in trappola, pstl/ppr, 79x69 (Uffizi, inv. 1890, no. 4315) φ



J.94.1295 ~variant, fanciulla con gatto e un topo in trappola, pstl/ppr, 27x21 (Uffizi, inv. 1890, no. 5702) φ



J.94.1297 Fanciulla con fiori, pstl/ppr, 45x30 (Uffizi, inv. 1890, no. 4319) φ



J.94.1299 Baccanale, pstl/ppr, 48x34 (Uffizi, inv. 1890, no. 4365) φ



J.94.1301 Donna, pstl/ppr, 48x34 (Uffizi, inv. 1890, no. 5289) φ



J.94.1303 Donna con occhiali e un gatto, pstl/ppr, 62x52 (Uffizi, inv. 1890, no. 5338) φ



J.94.1305 Donna vestita da Diana, pstl/ppr, 29.6x23 (Uffizi, inv. 1890, no. 5634) φ



J.94.1307 Fanciulla, pstl/ppr, 29x24 (Uffizi, inv. 1890, no. 5638) φ



J.94.1309 Donna con turbante, pstl/ppr, 30x23 (Uffizi, inv. 1890, no. 5639) φ



J.94.1311 Donna, pstl/ppr, 30x25 (Uffizi, inv. 1890, no. 5640) φ



J.94.1313 Donna, pstl/ppr, 28x24 (Uffizi, inv. 1890, no. 5679)

J.94.1314 Donna, pstl/ppr, 30x25 (Uffizi, inv. 1890, no. 5680) φ



J.94.1316 Donna con cuffia, pstl/ppr, 36x26 (Uffizi, inv. 1890, no. 5683) φ



J.94.1318 Donna, pstl/ppr, 29.5x25 (Uffizi, inv. 1890, no. 5701) φ



J.94.132 Donna, pstl/ppr (Uffizi, inv. 1890, no. 5785) φ



J.94.1322 Donna, pstl/ppr (Uffizi, inv. 1890, no. 3424, Galleria Palatina) φ



J.94.1324 Donna, pstl/ppr, 32x25 (Uffizi, inv. 1890, no. 5728, dep.: n/k) φ



J.94.1326 Ragazza con gallina, pstl/ppr, 46x33 (Italian state asset, 61.B.111) φ



J.94.1328 Donna con cappello, pstl/ppr, 63x52 (Italian state asset, attr. Fratellini) [??attr.] φ



J.94.133 Bambina, pstl/ppr, 44x34.5 (Italian state asset, attr. Fratellini) [??attr.] φ



J.94.1332 Giovane donna, pstl/ppr, 47.5x62 (Italian state asset, attr. Fratellini) [??attr.] φ



J.94.1334 Giovane donna con cappello, pstl/ppr, 28x22.5 (Italian state asset) φ



J.94.1336 Head of a woman, pstl/ppr, 31.3x22.0 (Haarlem, Teylers Museum, inv. B 23). Italian sch., 17th century

J.94.1337 Tête de femme, pstl/ppr bl., 33.6x24.1 (British Museum, inv. 1911-10-18-6. Arthur Melville Champernowne; acqu. 1911, as Carriera). Exh.: London 1972b, no. 277 [?follower of Barocci] φσ



J.94.1339 Testa femminile, pstl/ppr, 55x40 (Padua, Musei Civici, inv. A 1180, B 596, as Carriera. Antonio Piazza, Padua; acqu. 1856). Exh.: Padua 1997, no. 707 repr., seguace di Bartolomeo Nazzari φ



J.94.1341 Jeune dame tenant une lettre, pstl/ppr, 61x49, the letter inscr. "My love", pstl/ppr, 61x49 (Padua, Musei Civici, inv. A 1185; B 597. Antonio Piazza; acqu. 1856). Exh.: Padua 1997, no. 783 repr., seguace di Carriera φ



J.94.1343 Testa femminile, pstl/ppr, 26.5x18.5 (Padua, Musei Civici, inv. 2460. E. Munari Bisaglia, Padua; acqu. 1952). Exh.: Padua 1997, no. 777 repr, pittore veneto φ



J.94.1345 4 heads of girls (Penicuik House, 1724 inv., as Luti). Lit.: Bowron 1980, n.r., ??Luti φ



J.94.1346 Giovinetta con fiori, pstl (Rovigo, Accademia dei Concordi as by Rosalba) [??attr.] φv



J.94.1347 Vecchia dama, pstl/ppr, 46x39, c.1740–60 (Venice, Ca' Rezzonico, inv. Cl. I n.0889) [cf. Nogari] φ

J.94.1349 Giovana dama, pstl/ppr, 43x34 (Venice, Museo Correr, inv. Cl. I n.1125 [cf. later] φ

J.94.1351 Eine betende Madonna, pstl (Vienna, Kaiserliche königl. Bildergalerie). Lit.: *Nene Bibliothek der schönen Wissenschaften und der freyen Künste*, XXVI/1, 1781, p. 143

Unknown women – order of appearance

J.94.1355 S. Maria Maddalena, pstl (Antonio Galeazzo Malvezzi, Bologna, inv. 9.VIII.1658)

J.94.1356 Quaranta quattro Retratti di Dame, pstl (Lorenzo Onofrio Colonna, Rome, inv. 1679)

J.94.1357 Beata Vergine annunziata, pstl (Marchese Alessandro Facchinetti, Bologna, inv. 19.V.1685)

J.94.1358 Testa di donna, pstl (Cardinal Luigi Alessandro Omodei, Rome, inv. 2.V.1685)

J.94.1359 Due teste di donna, una giovane et una vecchia, pstl (Cardinale Carlo Pio di Savoia, Rome, inv. 1.III.1689). ?Michelangelo or Raffael

J.94.136 Testa di donna spaurita, pstl (Cardinale Carlo Pio di Savoia, Rome, inv. 1.III.1689). ?Michelangelo or Raffael

J.94.1361 Una giovane, pstl (Cardinale Carlo Pio di Savoia, Rome, inv. 1.III.1689). ?Michelangelo or Raffael

J.94.1362 Nove retratti di dame, pstl (Lorenzo Onofrio Colonna, Rome, inv. 1689)

J.94.1363 Quattro Donne ignude un delle quali guardasi in un piede, pstl (Lorenzo Onofrio Colonna, Rome, inv. 1689)

J.94.1364 Testa d'una giovine, pstl (Lorenzo Onofrio Colonna, Rome, inv. 1689)

J.94.1365 Testa d'una Beata Vergine con le mani gionte, pstl (Federico Beroaldi, conte e cavaliere dei SS. Maurizio e Lazzaro, Bologna, inv. 15.I.1695)

J.94.1366 Testa di donna, pstl (Cesare Alberto Malvasia, Bologna, inv. 30.VII.1697). Manner of Reni

J.94.1367 Donna, pstl (Agostino Chigi, principe di Farnese, principe di Campagnano, principe di Albano, duca d'Ariceia, Rome, inv. 2.XII.1705 – 12.I.1706)

J.94.1368 Beata Vergine con il Puttino, e S. Giovanni, e S. Giuseppe in disegno, pstl (Roberto Muratori, Bologna, inv. 19.IV.1709)

J.94.1369 Donna, pstl (Filippo II Colonna, Rome, inv. 15.XII.1714 – 26.II.1716). Manner of Reni

J.94.137 Busto di una Giovine con fiori in testa, pstl (Benedetto d'Aste, Rome, inv. 1718)

J.94.1371 Tre Quadretti con la Madonna, pstl (Benedetto d'Aste, Rome, inv. 1718)

J.94.1372 Testa di Donna, pstl (Emilio, Principe Altieri, Rome, inv. 13.IX.1721)

J.94.1373 Donna, pstl (Conte Riniero Marescotti, Bologna, inv. 31.I.1722)

J.94.1374 Busto della Beata Vergine, che tiene le mani gionte, pstl (Principessa Orsini, née Anne-Marie de La Trémoille, Rome, inv. 1723)

J.94.1375 Doi quadri Rapp.ti doi Donne con caduta di Ricci de Capelli, e vestite di nero con panno in spalla di merletto, pstl (Principessa Orsini, née Anne-Marie de La Trémoille, Rome, inv. 1723)

J.94.1376 Beata Vergine, pstl (Contessa Maria Vittoria Caprara, Bologna, inv. 16.II.1780)

J.94.1377 Beata Vergine Maria, pstl (Giuseppe Maria Bacchetoni, Bologna, inv. 18.IX.1783)

J.94.1378 Maria Vergine, pstl (Paolo Alberto Tanari, Bologna, inv. 16.VI.1784). Manner of Reni

J.94.1379 La governatrice di Siena, pstl (Giulio Pannilini, Siena, 9.V.1785)

J.94.138 Beata Vergine, pstl (Matilde Bassi Caracci, Bologna, inv. 31.VIII.1787)

J.94.1381 Beata Vergine con le mani giunte, pstl (Conte Girolamo Ranuzzi, Bologna, inv. 13.III.1788). Sch. of Giuseppe Carlo Pedretti

J.94.1382 Due ritratti di due femmine giovani, pstl (Silvestro Aldobrandini, Florence, inv. 23.IV.1794)

J.94.1383 Madonnina, pstl (Silvestro Aldobrandini, Florence, inv. 23.IV.1794)

J.94.1384 Études de tête de femme mendiante, pstl/ppr, 19x16.2 (Paignon Dijonval 1810). Lit.: Bénard 1810, no. 355 [part], école romaine

J.94.1385 Tête de femme, pstl, 40.6x27.1 (Paignon Dijonval 1810). Lit.: Bénard 1810, no. 782 école vénitienne, c.1772

J.94.1386 Due quadri, ritratti di femmine, pstl ([Giuseppe?] Riccardi, Florence, inv. 20.VII.1810)

J.94.1387 Quattro quadri, ritratti di femmine, pstl ([Giuseppe?] Riccardi, Florence, inv. 20.VII.1810)

J.94.1388 Donna vestita all'Antica, pstl (Orsini, Rome, inv. 9.XII.1822)

J.94.1389 Due disegni con due Donne, con caduta di ricci de Capelli vestita di nero con panno di Merletto alle Spalle, pstl (Orsini, Rome, inv. 9.XII.1822)

J.94.139 Una monaca, pstl (Orsini, Rome, inv. 9.XII.1822)

J.94.1391 SS. Vergine detta della Perla, pstl (Ferdinando II Borbone, Re delle due Sicilie, Caserta, inv. 7.VII.1857)

J.94.1392 Testa di una Vergine, pstl (Ferdinando II Borbone, Re delle due Sicilie, Caserta, inv. 7.VII.1857)

J.94.1393 Dame en manteau bleu, tenant une masque, pstl, 45x42 (conte Lodovico Miari, Padua, 1911). Exh.: Florence 1911, repr. tav. V, attr. Carriera φ



J.94.1395 Dame en manteau bleu, tenant des violettes, pstl, 80x57 (conte Lodovico Miari, Padua, 1911). Exh.: Florence 1911, repr. tav. V, attr. Carriera φ



J.94.1397 Femme au petit chien, pstl, 66.5x57 (Paris, Drouot, Boisgirard, 17.VII.1964, I1800)

J.94.13971 [olim J.21.2627] Dama, pstl/ppr (Fratelli Piccinini, Udine, 1929, as by Carriera, 1744). Exh.: Venice 1929, p. 115, no. 20 n.r. [??attr.] φ



J.94.13972 Giovane donna, pstl/ppr (Italy PC 1969, with Pallucchini opinion 27.XII.1969 as by Rosalba) [??attr.] φv



J.94.13973 Dama, pstl (Giordano, Turin, a.1980, circle of Rosalba) φ



J.94.13974 Dama, pstl/ppr (PC c.1980, as by Rosalba) [??attr.]φ



J.94.13975 Dama, pstl/ppr, 49x38.5 (Galleria G. Zabert, Turin, 1980) φ



J.94.1398 Allégorie de l'Hiver, pstl, 76.8x63.5 (New York, Sotheby's, 18.I.1984, Venetian sch., \$2000)

J.94.1399 Jeune fille, pstl, 33x28 (Milan, Finarte, 4.XI.1986, XVIII^e, Bolognese sch., It£2,800,000)

J.94.140 Head of a young girl, pstl/bl. ppr, 32.7x24.5 (Kate de Rothschild, exh. 25.VI.–6.VII.1984, no. 1, Bolognese sch., late 18th century) φ



J.94.1402 Young girl in a yellow robe, black, red chlk, pstl/bl.-gr. ppr, 25.1x20.8 (William Russell, L.2648; London, Christie's, 10.XII.1884, as Barocci. R. Henniker Heaton, Spink & Son; Kate Ganz, exh. 30.VI.–10.VII.1987, no. 2, as Lombard sch.) φ



J.94.1404 Jeune femme en source, collier de perles, pstl/ppr, 58x49 (Venice, Finarte, 28.XI.1987, Lot 421 repr., scuola di Carriera, est. It£2,000,000–2,500,000) φ



J.94.1406 Head of Diana, a/r Veronese, 40.8x32.3 (marquis de Lagoy, L. 1710; London, Christie's, 4.VII.1989, Lot 103 n.r., Venetian sch., 18th century, est. £500–700)

J.94.1407 Femme appuyée sur sa main, pstl/ppr, 43x34 (Paris, Drouot, Ader Tajan, 25.XI.1993, Lot 90 n.r., Italian sch., est. Fr3000)

J.94.1408 Young girl with a straw hat and garland of flowers; & pendant, pstl/ppr, 57.2x44.5 (New York, Sotheby's Arcade, 20.VII.1994, Lot 16 repr./n.r., circle of Carriera, est. \$1500–2000) φ



Photo courtesy Sotheby's

J.94.1411 2 ritratto femminile (Rome, Finarte, 26.IX.1995, Veneto sch., XVIII^e) φ



J.94.1414 2 sibyls (Rome, Finarte, 26.IX.1995, Veneto sch., XVIII^e) φ



J.94.1417 Elegant lady, holding flowers in her right hand, pstl, 65.0x47.3, inscr. "C^o Rosalba f./1720" (London, Christie's, 2.VII.1996, Lot 173 n.r., est. £1000–1500, £1725)

J.94.1418 Madonna, pstl, 68.5x56, (London, Christie's, 16.IV.1997, Lot 47 repr., follower of Guido Reni, est. £100–200)

J.94.1419 Dame en Diane, pstl, 23.5x25; & pendant: J.94.142 Portrait, pstl, ov. (Théodore-Aubanel; Paris, Christie's, 12.XII.1998, Lot 101 n.r., with pendant, Éc. de Turin, XVIII^e, est. Fr300–500)

J.94.1421 Jeune femme au collier de perles, pstl, gch./ppr, 44x34 (Munich, Hampel, Italian sale, 2003, Lot 733 repr., circle of Carriera, est. €1200) φ



J.94.1423 Dama con pendaglio a cuore, pstl, 44x32.5 (Venice, Semenzato, 9.XI.2003, Lot 66 repr., Austrian sch., est. €2800–3500) φ



J.94.1425 Dama con orecchini, pstl, 50.5x41.5 (Venice, Semenzato, 9.XI.2003, Lot 74 repr., attr. Carriera, est. €18–20,000) φ



J.94.1427 Lady holding flowers, pstl (n/k, as by Carriera) [??attr.] φ



J.94.1429 Lady in a flowered dress with lace trimming, pearl necklace, pearl earrings, pstl/pchm, 45.6x38.6 (Albert Bassard –1935; London, Bonhams, 7.XII.2005, Lot 86 repr., Venetian sch., est. £1000–1500) φ



J.94.1431 L'enfant aux colombes, pstl, 56x52.5 (Des Isnards. Château du Martinet; Paris, Artcurial - Briest-Le Fur-Poulain-F.Tajan, 14.III.2006, Lot 136 n.r., éc. italienne, fin XVIII^e, est. €600–800, €1603)

J.94.1432 Jeune femme, pstl/ppr br., 28.7x24.5 (PC 2006; Paris, Christie's, 22.III.2007, Lot 33 repr., attr. Luti, est. €4–6000, €10,200) *Olim* attr. Carriera, cf. Sani 85 [?, handling different]; Pietro da Cortona; circle of Luti φ



1.94.1434 Femme en buste, manteau bleu; & pendant: 1.94.1435 femme en chapeau de paille, pstl/ppr, 42x33.5 (Paris, PIASA, 29.xi.2006, Lot 37 repr., as by Rotari, est. €2000–2500, €1100) φ



1.94.1438 Jeune femme vénitienne, pstl/ppr, 43.2x33 (New York Doyle, 26.x.2005, Lot 1044 repr., as Carriera, est. \$6–8000; New York, Doyle, 24.x.2007, Lot 1003 repr., manner of Rosalba Carriera, est. €800–1200) φ



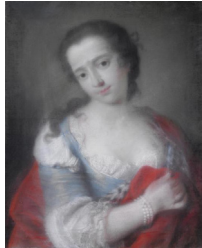
1.94.144 Dame, pstl/pchm, 21.5x18 (Vienna, Dorotheum, 31.iii.2008, Lot 140 repr., est. €800–1000) φ



1.94.1442 Femme, pstl, 25x18 (Saumur, Xavier de La Perraudière, 28.iii.2009, Lot 9 repr., éc. italienne XVII^e, est. €1000–1500) φ



1.94.1444 Femme à la tulipe, pstl, 68x57 ov. (Évreux, Thion Enchèères, 31.v.2009, Lot 51)
1.94.1445 Gentildonna, pstl, 66x50 (Salvatore e Francesco Romano, Palace Magnani Feroni, Florence, Sotheby's, 12.x.2009, Lot 582 repr., cerchia di Carriera, est. €6–8000). Exh.: Cremona 1938, as Carriera φ



1.94.1447 Jeune élégante à l'éventail, pstl, 52x44 (Paris, Aguttes, 9.xii.2009, Lot 14 n.r., suiveur de Rotari, est. €600–800)

1.94.1448 Gentildonna, pstl/ppr, 66x53 (Florence, Pandolfo, 21.x.2010, Lot 580 repr., scuola veneta, est. €600–800 φ



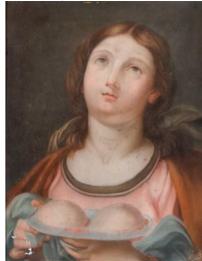
1.94.145 Gentildonna, pstl/ppr, 37.5x28 (Florence, Pandolfo, 21.x.2010, Lot 581 repr., scuola Italia centrale, est. €300–500) φ



1.94.1454 Young lady, bust-length, holding a posy of flowers; & pendant: 1.94.1455 lady, bust-length, in fur-trimmed costume and holding a dog, pstl/ppr, 52.7x42 irregular shape (Milanese PC; desc.: London, Bonhams Knightsbridge, 26.x.2011, Lot 149 repr., Venetian sch., est. £3–5000, b/i; London, Bonhams Knightsbridge, 2.v.2012, Lot 248 repr., est. £1500–2500, £3125) φ



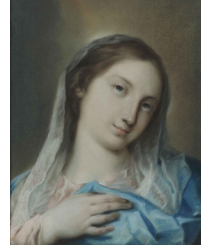
1.94.1458 Sant'Agata, pstl/ppr, 44x35 (Rome, Christie's, .xii.2001. Vercelli, Meeting Art, 5.xi.2011, Lot 249, seguace di Guido Reni, est. €500) [cf. Sirani] φ



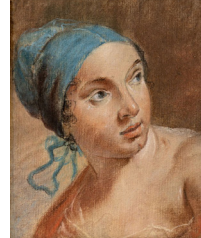
1.94.1462 Gentildonna, pstl, 48x37 (Milan, Il Ponte Casa d'Aste, 11.vi.2013, Lot 196 repr., cerchia di Carriera, est. €6–7000, b/i) φ



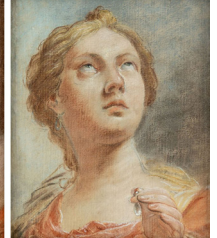
1.94.1463 Madonna, pstl/ppr, 46x34 (Brescia, Capitolium Art, 4.vi.2015, Lot 19, scuola di Rosalba Carriera, est. €7–9000) φ



1.94.14653 Head of woman in a blue turban; & pendant: 1.94.14654 another head of Cleopatra, pstl/ppr, 37x30 (Milan, Art-Rite, 27.vi.2023, Lot 14, Venetian sch.). ?A/r old master, ?Tiepolo φ



1.94.14654 Giovane dama, pstl/ppr, 45.5x36 (Italian PC 2023) φ



1.94.14655 Young woman in ermine cloak, pstl, 48.5x39.5 (Paris, Tajan, 13.xii.2023, Lot 70 repr., as circle of Tiepolo, est. €3–5000) φ



Unknown pendants

1.94.1469 Virgin Mary reading, a/r pnt. Carlo Maratta (Saltram); & pendant: 1.94.147 St John the Evangelist, with a book, pstl/ppr, 49.5x38 (Mount Vernon, Large Dining Room. George Washington (1732–1799), inv. 1799, valued \$15 each; Martha Dandridge Custis Washington (1731–1802); acq. Bushrod Washington (1762–1829); Bushrod Corbin Washington (1790–1851); John Augustine Washington III (1821–1861); Lawrence Washington (1854–1920); Philadelphia, Thos. Birch's Sons, 21.iv.1891 & seq., Lot 273/272; Louisa Fontaine Washington (1844–1927) & her husband Col. Roger Preston Chew (1843–1921); Margaret Preston Chew (1883–1972); Louisa Fontaine Washington Dawson (1925–2023) and her husband John Reed Smucker III; desc.: PC. (*Virgin*): acq. Mount Vernon Ladies' Association 2003. (*St John*): PC; dep.: Mount Vernon 2013–24; Alexandria, Virginia, Potomack Company, 29.x.2024, Lot 4053 repr., est. \$250–500,000, \$317,500). Lit.: Linda Ayres, "The Virgin Mary's homecoming:

generous descendant contributes period pastel”, *Mount Vernon Ladies’ Association annual report*, 2001, pp. 22–25; Joseph Manca, *George Washington’s eye: landscape, architecture and design at Mount Vernon*, Baltimore, 2012, pl. 31/n.r., as of St John the Baptist [cf. follower of Luti] φ



J.94.1472 Boy holding a bunch of grapes; J.94.1473 Girl blowing on hot coals in an urn; J.94.1474 Woman smelling a rose; & J.94.1475 Boy holding a rake, pstl, 39x30.5 (London, Christie’s South Kensington, 21.IV.1998, Lot 101 repr., £2–3000) φ



J.94.1477 Boy with guitar; & pendant: J.94.1478 Girl with tambourine, pstl, 45x36 (New York, Sotheby’s, 21.I.2003, Lot 79, as circle of Carriera, est. \$6–8,000, \$6000. Florence, Palazzo Ramirez, Pandolfini 12.X.2022, Lot 72/71 repr., Venetian, XVIII^e, est. €3000–5000 each) [?by the Chicago Music Hour pasticheur] φ

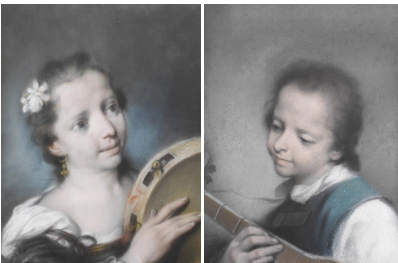
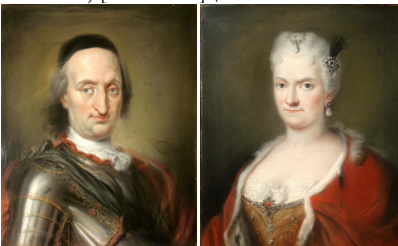


Photo courtesy Sotheby’s

J.94.1482 Caritas, pstl/ppr, 25.5x20, inscr. “Roma 1770” (Stuttgart, Nagel, 27.VI.2007, Lot 476 repr., est. €650) φ



J.94.1484 A knight of the Toison d’or, in armour; & pendant: J.94.1485 princess, pstl, 59.5x48.5 (Milan PC; acqu. c.1970, art market; Paris, Piasa, 6.XI.2017, Lot 12, as éc. autrichienne c.1730, suiveur de Martin II van Mytens, est. €3–4000) [cf. Baldacci] φ



J.94.1488 Giovane uomo con giacca marrone; & pendants: J.94.1489 Dama con veste azzurra; J.94.149 uomo con giacca marrone; & J.94.1491 uomo con giacca grigia, pstl/pchm, 43.5x30 (Genoa, Wannenes, 30.XI.2010, Lot 109 repr., pittore bolognese del XVIII secolo, est. €3–4000) φ



J.94.1497 Jeune homme à la toque bleu; & pendant: J.94.1498 Femme à la robe rouge, doublée de fourrure, pstl, 57x41 (Paris, Drouot, Artcurial, 5.X.2013, Lot 264 repr., éc. vénitienne XVIII^e, est. €2–3000; Vienna, Dorotheum, 25.III.2014, Lot 53 repr., school of L. B. Tiepolo, est. €800–1200; Bamberg, Schlosser, 26.VII.2014, Lot 843 repr., as German sch., 18th century, est. €1800) φ



J.94.14993 Young man in a brown coat; & pendant: J.94.14994 lady in a blue mantle edged with ermine, pstl, 49x40 (Fondation des Suisses dans le Monde; Geneva, Piguet, 7–21.IX.2023, Lot 4276/4288 repr., éc. fr., est. SwFr300–500 each, SwFr330/480; PC 2023; Paris, Christie’s, 22.III.2023, Lot 30 repr., Éc. vénitienne, est. €10–15,000, b/i. (Homme): Paris, Tajan, 23.X.2024, Lot 131 repr., est. €3–5000. (Dame): Paris, Tajan, 13.XII.2023, Lot 70 repr. ent. de Tiepolo, est. €3–5000, €3900; PC 2024) [cf. Carlevarijs, ?] φ



Unknown groups &c. – museums

J.94.1502 The music hour, pstl/ppr, 53x63 (Chicago, Art Institute, 1962.970, as Liotard. Miethke Gallery, Vienna, 1938, as by Rosalba

Don Charles Deering McCormick, Brooks McCormick, and Roger McCormick 1962). Lit.: *Calendar of the Art Institute of Chicago*, lix/4, .IX.1965, pp. 7 repr., as Liotard; I&R A23 repr., attr. Liotard; R&L R48 [??attr.; Italian sch., or later pastiche: other examples as by the Chicago Music Hour pasticheur] φ



J.94.1504 The card players, pstl/ppr, 53x63 (Chicago, Art Institute, 1962.969, as Liotard. Don Charles Deering McCormick, Brooks McCormick, and Roger McCormick 1962). Attr. Liotard [??attr.; Italian sch.; by the Chicago Music Hour pasticheur] φ



J.94.1506 Madonna con Bambino, pstl/ppr, 42.5x34.5 (Uffizi, inv. 1890, no. 6414. Monastero di San Michele a San Salvi) φ



J.94.1508 Giovane donna e uomo, pstl/ppr, 53.5x41 (Uffizi, inv. 1890, no. 5126) φ



J.94.151 Bacco e un putto, pstl/ppr, 33x25 (Uffizi, inv. 1890, no. 7874) φ



J.94.15104 Putti con ariete, pstl/ppr, 37x44.2 (Venice, Museo Correr, inv. Cl. I n.1425) φ



1.94.1512 Sacro Cuore di Gesù, pstl/ppr, 80x63 (Italian church asset) φ



1.94.1514 Marte e Venere, pstl/ppr, 39.5x49.5 (PC)

Unknown groups &c. – order of appearance

- 1.94.1516 Testa, pstl (Bartolomeo Barzi, Rome, inv. 29.XII.1645)
 1.94.1517 Testa, pstl (Conte Matteo Macchiavelli, Bologna, inv. 5.XI.1661)
 1.94.1518 Otto mastelli con otto faccie di dame, pstl (Giovanni Azzavedi, Rome, inv. 12.I.1668)
 1.94.1519 Testa, pstl (Cardinale Francesco Albizzi, Rome, inv. 4.IV.1682)
 1.94.152 Ritratto, pstl (Carlo de Rossi, Rome, inv. 27.X.1683)
 1.94.1521 Madonna, il Bambino e S. Fran.co, pstl (Cardinal Luigi Alessandro Omodei, Rome, inv. 2.V.1685)
 1.94.1522 Testa d'un angelo, pstl (Gaspar de Haro y Guzmán, Conde-Duque de Olivares, Naples, inv. 17.XI.1687 – 20.II.1688)
 1.94.1523 Guarda all'ingiu con la testa fasciata al modo di turbante, pstl (Cardinale Carlo Pio di Savoia, Rome, inv. 1.III.1689). ?Michelangelo or Raffael
 1.94.1524 Panno avvolto in testa, pstl (Cardinale Carlo Pio di Savoia, Rome, inv. 1.III.1689). ?Michelangelo or Raffael
 1.94.1525 Dea flora che viene incoronata da un puttino con una girlanda di fiori con diverse altre niffe incoronate di fiori, pstl (Lorenzo Onofrio Colonna, Rome, inv. 1689)
 1.94.1526 Dea Flora che viene incoronata dà un puttino, pstl (Colonna, Rome, inv. 1689)
 1.94.1527 Doi Testine, pstl (Lorenzo Onofrio Colonna, Rome, inv. 1689)
 1.94.1528 Sette teste, pstl (Lorenzo Onofrio Colonna, Rome, inv. 1689)
 1.94.1529 Testa di un'angelo, pstl (Lorenzo Onofrio Colonna, Rome, inv. 1689)
 1.94.153 Testa d'un angelo, pstl (Colonna, Rome, inv. 1689)
 1.94.1531 Tre testine, pstl (Lorenzo Onofrio Colonna, Rome, inv. 1689)
 1.94.1532 Trentasei quadretti div. retratti de signore mezze figure, pstl (Lorenzo Onofrio Colonna, Rome, inv. 1689)
 1.94.1533 Venere che bacia un vecchio, pstl (Lorenzo Onofrio Colonna, Rome, inv. 1689)
 1.94.1534 Vescovo vestito alla Ponteficale in mezzo à due angolini, pstl (Colonna, Rome, inv. 1689)
 1.94.1535 Vescovo vestito alla Ponteficale in mezzo a dui angelini, pstl (Lorenzo Onofrio Colonna, Rome, inv. 1689)
 1.94.1536 Salvatore, pstl (Carlo Conti, Duca di Poli, Rome, inv. 11.VIII.1690)
 1.94.1537 Testa di donna in profilo, pstl, 22.3x11.2 (Antonio Amici Moretti, Rome, inv. 1.III.1690)
 1.94.1538 Testa di vecchio con corona di hedera, pstl (Donato Fini, Rome, inv. 10.VII.1692)

- 1.94.1539 Due teste, pstl (Federico Beroaldi, Conte e Cavaliere dei SS. Maurizio e Lazzaro, Bologna, inv. 15.I.1695)
 1.94.154 Trè ritrattini di trè Pittori, disegno (Federico Beroaldi, Conte e Cavaliere dei SS. Maurizio e Lazzaro, Bologna, inv. 15.I.1695)
 1.94.1541 Otto bambozzi, pstl (Maria Maddalena Negri, Bologna, inv. 19.II.1697)
 1.94.1542 9 Disegni, pstl (Clemenza Ercolani Leoni, Bologna, inv. 24.I.1699)
 1.94.1543 Pastello (Cardinale Giovanni Battista Costaguti, Rome, inv. 1.IV.1704)
 1.94.1544 Testa, pstl (Cardinale Giovanni Battista Costaguti, Rome, inv. 1.IV.1704)
 1.94.1545 Testa, pstl (Filippo II Colonna, Rome, inv. 15.XII.1714 – 26.II.1716). Manner of Reni
 1.94.1546 Tre pastelli, pstl (Filippo II Colonna, Rome, inv. 15.XII.1714 – 26.II.1716)
 1.94.1547 Angelo Custode, pstl (Benedetto d'Aste, Rome, inv. 1718)
 1.94.1548 Cinque quadretti, pstl (Benedetto d'Aste, Rome, inv. 1718)
 1.94.1549 Due figure nude, pstl (Benedetto d'Aste, Rome, inv. 1718)
 1.94.155 Due Pastelli, pstl (Benedetto d'Aste, Rome, inv. 1718)
 1.94.1551 Faccia di un Putto, pstl (Benedetto d'Aste, Rome, inv. 1718)
 1.94.1552 Paesino, pstl (Benedetto d'Aste, Rome, inv. 1718)
 1.94.1553 Paesino, pstl (Benedetto d'Aste, Rome, inv. 1718)
 1.94.1554 Pastello (Benedetto d'Aste, Rome, inv. 1718)
 1.94.1555 Pastello (Benedetto d'Aste, Rome, inv. 1718)
 1.94.1556 Quattro pastelli (Benedetto d'Aste, Rome, inv. 1718)
 1.94.1557 Testa di Buffone, pstl (Benedetto d'Aste, Rome, inv. 1718)
 1.94.1558 Tre quadretti, pstl (Benedetto d'Aste, Rome, inv. 1718)
 1.94.1559 Madonna col Bambino in braccio, ed'un Libro in mano, pstl (Principessa Orsini, née Anne-Marie de La Trémoille, Rome, inv. 1723)
 1.94.156 Tre teste con un poco di busto, che cantono, pstl (Principessa Orsini, née Anne-Marie de La Trémoille, Rome, inv. 1723)
 1.94.1561 Sei ritratti, pstl (Cardinale Aldrovandi, Rome, inv. 1724)
 1.94.1562 Due ritratti, pstl (Alvaro della Quadra, Duca di Limatola, Naples, inv. 1725)
 1.94.1563 Ritratto, pstl (Anna Maria, Marchesa Petrosini Minutilli Caffarelli, Rome, inv. 14.IV.1731)
 1.94.1564 Tre disegni, pstl (Sebastiano Ricci, Venice, 19.V.1734)
 1.94.1565 Due quadretti rapp.ti due pastelli in ritratto d'Omo, pstl (Francesco, Conte Rita, Rome, inv. 16.I.1742)
 1.94.1566 Quattro pastelli con mezze figure (Cardinale Francesco Antonio Fini, Rome, inv. 27.IV.1743)
 1.94.1567 Due quadretti rappresentanti due teste, pstl (Sforza Giuseppe I Sforza Cesarini, Duca di Marsi, Rome, inv. 7.IX.1744)
 1.94.1568 Due quadrucci rappresentanti Paesi con una figurina che corre a cavallo, pstl, ov. (Sforza Giuseppe I Sforza Cesarini, Duca di Marsi, Rome, inv. 7.IX.1744)
 1.94.1569 Otto pastelli rappresentanti diverse figure, e teste, pstl (Sforza Giuseppe I Sforza Cesarini, Duca di Marsi, Rome, inv. 7.IX.1744)
 1.94.157 Sei quadrucci [rappresentanti teste?], pstl (Sforza Giuseppe I Sforza Cesarini, Duca di Marsi, Rome, inv. 7.IX.1744)
 1.94.1571 Studio di testa, pstl (Sforza Giuseppe I Sforza Cesarini, Duca di Marsi, Rome, inv. 7.IX.1744)
 1.94.1572 Testa con collare, pstl (Sforza Giuseppe I Sforza Cesarini, Duca di Marsi, Rome, inv. 7.IX.1744)
 1.94.1573 Testa, pstl (Sforza Giuseppe I Sforza Cesarini, Duca di Marsi, Rome, inv. 7.IX.1744)
 1.94.157301 32 Santi (Giovanni Ignazio Lantieri, nipote di Livio; inv. p.m., 1753). Lit.: Tronkar 2013 [cf. Pavona]
 1.94.15731 Redentore, pstl (Giovanni Ignazio Lantieri, nipote di Livio; inv. p.m., 1753). Lit.: Tronkar 2013
 1.94.15732 2 Beata Vergine, pstl (Giovanni Ignazio Lantieri, nipote di Livio; inv. p.m., 1753). Lit.: Tronkar 2013
 1.94.15733 San Giuseppe, pstl (Giovanni Ignazio Lantieri, nipote di Livio; inv. p.m., 1753). Lit.: Tronkar 2013
 1.94.15734 2 pstl "mediocri" (Giovanni Ignazio Lantieri, nipote di Livio; inv. p.m., 1753). Lit.: Tronkar 2013
 1.94.15735 Musa, pstl (Giovanni Ignazio Lantieri, nipote di Livio; inv. p.m., 1753). Lit.: Tronkar 2013
 1.94.15736 Testa di donna, pstl (Giovanni Ignazio Lantieri, nipote di Livio; inv. p.m., 1753). Lit.: Tronkar 2013
 1.94.15737 Amorini "quadretto alto una quarta", pstl (Giovanni Ignazio Lantieri, nipote di Livio; inv. p.m., 1753). Lit.: Tronkar 2013
 1.94.1574 Testa, pstl (Andrea Bonito, Duca dell'Isola, Naples, inv. 2.IV.1757)
 1.94.1575 Testa, pstl (Cristoforo Orsetti, Venice, 26.V.1767)
 1.94.1576 Sei quadri, pstl (Simone Martines, Torino, 31.III.1769)
 1.94.1577 Beata Vergine e Bambino, pstl (Contessa Maria Vittoria Caprara, Bologna, inv. 16.II.1780)
 1.94.1578 Bacanale, pstl (Giuseppe Maria Bacchetoni, Bologna, inv. 18.IX.1783)
 1.94.1579 Ritratto, pstl (Petronio Landi, Bologna, inv. 25.VI.1783)
 1.94.158 Santa Famiglia e S. Gio. Batta, pstl (Giovanni Paolo, Conte Stella, Bologna, inv. 14.XII.1785)
 1.94.1581 Quattro ritratti, pstl (Ludovico Montefani Caprara, Bologna, inv. 20.II.1786)
 1.94.1582 Sujet de Vierge, pstl, a/r un grand Maître italien (de Montullé; Paris, Paillet, 18.XI.1787 & seq., Lot 86)
 1.94.1583 Due ritratti di puttini, pstl (Conte Girolamo Ranuzzi, Bologna, inv. 13.III.1788)
 1.94.1584 Due ritratti, pstl, ov. (Conte Girolamo Ranuzzi, Bologna, inv. 13.III.1788)
 1.94.1585 Ritratto di nana, pstl (Conte Girolamo Ranuzzi, Bologna, inv. 13.III.1788)
 1.94.15855 Holy Family, crayons, ov. (Charles Bembridge; London, Skinner & Dyke, 22.V.1794, Lot 4, Italian sch., £1/8/-; Hayward)
 1.94.1586 Due paesi, pstl (Pietro Marchetti, Rome, inv. 4.XI.1802)
 1.94.15865 Virgin and Child, crayons (Edward Poore; London, William Richardson, 19.IV.1805, Lot 41, Italian sch., 17/-)
 1.94.1587 Due ritratti, pstl ([Giuseppe?] Riccardi, Florence, inv. 20.VII.1810)
 1.94.1588 Due ritratti, pstl (Vincenzo Riccardi, Florence, inv. 14.IX.1814)
 1.94.1589 Tre ritratti, pstl (Marchese Francesco Patrizi Naro, Rome, inv. 28.III.1814)
 1.94.159 Ritratto con collaro, e tracolla all'antica, pstl (Orsini, Rome, inv. 9.XII.1822)
 1.94.1591 Ritratto vestito di nero, pstl (Orsini, Rome, inv. 9.XII.1822)
 1.94.1592 Trè Teste, e un poco di Busto, che cantano, pstl (Orsini, Rome, inv. 9.XII.1822)
 1.94.1593 Ritratto, pstl, ov. (Filippo Schiassi, Bologna, inv. 14.IV.1845)

- J.94.1594 Basilica di S. Francesco di Paola di Napoli, pstl (Ferdinando II Borbone, Re delle due Sicilie, Caserta, inv. 7.VII.1857)
 J.94.1595 Il Calvario, pstl (Ferdinando II Borbone, Re delle due Sicilie, Caserta, inv. 7.VII.1857)
 J.94.1596 [olim J.21.2803=J.21.21655] Sacra famiglia con San Giovannino, pstl, 81x62 (Philip Godsall a.1800; desc.; dep.: Ferens Art Gallery, Hull, 1925–46; London, Christie's, 26.XI.1965, Lot 64, as Carriera; £336; Lucas) [cf. J.21.21654] Φv



Photo courtesy Christie's

- J.94.1597 St Peter presenting the keys to Christ, crayons, by a Venetian paintress, a/r Old Palma (Marquess of Bute; Luton Park, rough catalogue, s.d. [c.1800], f° 28)
 J.94.15971 The woman caught in adultery, crayons, by a Venetian paintress, a/r Sassoferrato (Marquess of Bute; Luton Park, rough catalogue, s.d. [c.1800], f° 35)
 J.94.1599 Diana and Actaeon, pstl, 58.5x43.5 (London, Phillips, 4.XII.1989, Lot 261 n.r., est. £250–300 with 2 undescribed drawings)
 J.94.1601 Three vestal virgins by an urn, watched by a soldier, pstl/ppr, 78.5x64.3; & pendant: J.94.16012 three girls decorating an urn with flowers, pstl/ppr, 78.5x64.3 (London, Christie's, 11.XII.1990, Lot 320 n.r., est. £600–800)
 J.94.1602 Allegory of the Arts, pstl, 57x69 (London, Sotheby's, 18.IV.1996, Lot 76 repr., Venetian sch., 18th century, est. £2–3000, £5750) Φ



Photo courtesy Sotheby's

- J.94.1605 Alcibiades reprimanded by Socrates, pstl/ppr, 36.8x28, Italian sch., c.1780 (Charles Plante Fine Art) [cf. Goupy] φ



- J.94.1607 Capriccio view of classical ruins with figures surveying the ancient buildings, pstl/ppr, 23.2x31.1 (London, Phillips, 3.VII.2000, Lot 86 n.r., circle of Marco Ricci, est. £500–700)
 J.94.1608 Young woman and child, pstl, 47x37 (Gehort Berty 1951. London, Sotheby's Olympia, 17.VII.2002, Lot 1 repr., circle of Francis Cotes, est. £1000–1500, b/i. Paris, Tajan, 26.III.2003, Lot 31 repr., attr. Tiepolo, est. €3–4000, €9500). Lit.: Jeffares 2006, p.

- 514, col. c n.r., as ??attr. Tiepolo [by the Chicago Music Hour pasticheur] φ



- J.94.161 Sacra famiglia con San Giovannino, pstl, ov. (Milan, Finarte, 31.III.2003, Bolognese school, 18th century) φ



- J.94.1612 La partie de cartes, pstl, 41x51, sd 1796 (Lille, Mercier, 26.VI.2004, Lot 236 n.r., Éc. italienne, est. €2–3000)
 J.94.1613 Madonna and Child, pstl, 55.2x45.1 ov. (London, Christie's South Kensington, 10.XII.2004, Lot 344 repr., Venetian sch., late 17th century, est. £1200–1800, £1434) Φσ



Photo courtesy Christie's

- J.94.1616 Coppia di teste di carattere, pstl/ppr, 35x28 (Milan, Christie's, 7.VI.2006, Lot 2 n.r., Venetian sch., middle 18th century, est. €1–2000)
 J.94.1617 Christ being prepared for the Flagellation, pstl, 79.5x57.8 (London, Phillips, 9.VII.2001, Lot 117 repr., attr. Trevisani, est. £800–1200, £2400) [??attr.; cf. follower of Mengs] φ



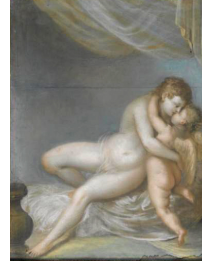
- J.94.1619 Madonna and child surrounded by angels, pstl, 55.7x48.2 (London, Christie's South Kensington, 4.X.2006, Lot 851 repr., follower of Correggio, est. £600–800) φ



- J.94.1621 Sacra famiglia con cherubini, pstl/pchm, 50x41.5 (Florence, Pandolfini, 3.X.2006, Lot 167, scuola bolognese, XVIII) φ



- J.94.1623 Venus and Cupid, pstl/ppr, 80x60.3 (Gianni Versace, Villa Fontanelle, Lake Como; London, Sotheby's, 18.III.2009, Lot 359 repr., circle of Andrea Appiani, est. £1–2000) φ



- J.94.1625 Figures in a rocky cove, pstl/ppr, 34.3x42.5 (London, Christie's South Kensington, 28.VII.2009, Lot 276 repr., est. £400–600, £400) [cf. Johann Christian Brand] φ



- J.94.1626 Madonna con Bambino, pstl, 41x33.5 (n/k, attr. I. Amigoni) [cf. a/r Sirani or another Italian 17th century master?] φ



- J.94.1627 ~version, pstl, 42.5x34.5 (Paris, Drouot, Millon, Cornette de Saint-Cyr, 11.XII.2009, Lot 47 repr., école des Gandolfi, est. €600–800) φ



- J.94.1629 ~version, pstl/ppr, 39x31 (Paris, Drouot, Rieunier, Bailly-Pommery, 25.II.2000, Lot 45 repr., as by Luti, est. F20–25,000, F54,000) [??attr.] φ



J.94.16292 ~version, pstl/ppr, 39x31 (Paris, Drouot, 16.XI.2021, Lot 19 repr., as by Luti and = J.94.1629, est. €8–10,000, b/i; Paris, Drouot, Drouot, Digard, 29.IV.2022, Lot 42 repr., est. €5–8000, €4200) [?attr.] φ



J.94.1631 ~cop., pstl, 50x30 (Spanish PC; Köln, Lempertz, 17.XI.2012, Lot 1261 repr., as by Lorenzo Tiepolo, est. €20–25,000, withdrawn; Barcelona, Sala de Ventas, 19.XII.2013, Lot 699 repr., as by Lorenzo Tiepolo, est. €17,000). Exh.: Madrid 2009, no. 30 repr., as by Lorenzo Tiepolo φ



~version, pnt., 40x32.2 (London, Sotheby's, 24.IV.2008, Lot 435, attr. Ignaz Stern)

J.94.1634 ~cop., pstl, 30x25.4 ov. (London art market c.2015; PC, as by Boucher) φ



J.94.1637 ~version, pstl/pchm, 39x30.5 (Mme Brasseur, de Lille; vente p.m., Paris, Georges Petit, 1.VI.1928, Lot 103. Melun, Drouot, Jakobowicz, 10.XII.2016, Lot 118 repr., entouragement de Gandolfi, est. €800–1000; Melun, Drouot, Jakobowicz, 17.VI.2017, Lot 175 repr., est. €700–800; Melun, Drouot, Jakobowicz, 7.X.2017, Lot 135 repr., est. €400–500) φ



J.94.16371 ~version, pstl, 39.5x32 (Saint-Georges-lès-Baillargeaux, château de Vayres, Sabourin, Thiebault, 13.XI.2022, Lot 119 repr., atelier de Lorenzo Tiepolo, est. €3–5000. Châtellerault,

Sabourin, 16.XII.2023, Lot 300 repr., atelier de Tiepolo, est. €3–5000) φ



J.94.1638 ~La Vierge à l'Enfant, pstl a/r Luti (Paris, Drouot, Rieunier, 25.II.2000, Lot 45); & pendant: J.94.1639 Sainte Elisabeth et saint Jean-Baptiste enfant, pstl, 39x32 (Paris, Drouot, Artcurial, 1.II.2012, Lot 8 repr., est. €1200–1500) φ



J.94.1642 ~Saint Elisabeth and St John the Baptist, pstl/ppr, 38x31.5 (Bourges, Michel Darmancier, Olivier Clair, 25.VI.2011, Lot 517 repr., est. €1200–1500) φ

J.94.1643 Bathseba von König David beobachtet (2 Samuel 11:2); & pendant: J.94.1644 Hagar mit ihrem Sohn Ismael und dem Engel (Genesis 21:14–18), pstl/ppr, 39x48 (Vienna, Dorotheum, 16.XI.2010, Lot 32/33 repr., Umkreis Sebastiano Ricci, est. €1600–2600) φ



Sacra famiglia con San Giovannino, pstl, 95.7x72.3 (Paris, Drouot, Delvaux, 17.XII.2010, entouragement de Francesco Da Mura). Lit.: *Gazette Drouot*, 3.XII.2010, p. 145 repr. φ



J.94.1649 Homme et femme, pstl, 44x34 (Paris, Drouot, Audap, Mirabaud, 16.III.2011, Lot 161 repr., éc. italienne c.1800, est. €500–600; Boris Wilnitsky, Vienna, attr. Cades, c.1775, €6000) [by the Chicago Music Hour pasticheur] φ



J.94.16495 [olim J.92.216] ~?pendant, Junge Frau und ihr Beichtvater, pstl/ppr, 42.5x33 (Swiss PC.

Köln, Lempertz, 17.XI.2007, Lot 1409 repr., Éc. fr., est. €5000, €6500) [?German or Italian; ?by the Chicago Music Hour pasticheur] φ



J.94.1653 La Sainte Famille, pstl, 32x23 ov. (Alexis Lanos; sa nièce Mme Diache, née Marie Lanos; Paris, Drouot, Artcurial, 1.II.2012, Lot 7 repr., est. €1200–1500, €4000; Paris, Drouot, Artcurial, 9.VI.2012, Lot 15 repr., est. €800–1200; Paris, Drouot, Artcurial, 17.X.2012, Lot 98 repr., est. €400–600). A/r Andrea del Sarto pnt. (Louvre) φ



J.94.1655 Bathseba im Bade, pstl/ppr, 48x37 (Vienna, Dorotheum, 1.IV.2015, Lot 61 repr., est. €400–600) φ



J.94.1675 Putti tra i fiori, pstl, 130x95 (Genoa, Boetto, 28.IX.2015, Lot 392 repr., sec. XVIII, est. €7000–7800) [?attr.; cf. XIX^e] φ



J.94.1676 La leçon de géométrie, pstl, 45.5x38 (Paris, Drouot, Giquello, 28.IX.2024, Lot 92 repr., as entouragement de Gaspare Traversi (1722–1770), est. €1000–1500, €800 [pb/i]) [?attr.; cf. XIX^e, as by the Chicago Music Hour pasticheur] φ

