

Neil Jeffares, *Dictionary of pastellists before 1800*

Online edition

HOARE, William, RA

Eye, Suffolk 1707 – Bath 1792

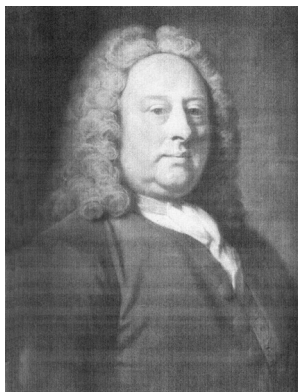
Part III: Unnamed sitters &c.

- J.395.1641 An officer, the countenance very expressive, pstl (artist's studio 1770. Clumber Park a.1987). Lit.: Belsey 1987, citing Richardson 1770
- J.395.1642 Boy in the character of a Cupid, pstl, Royal Academy 1772, no. 115
- J.395.16424 Young man in blue coat, pstl/ppr, 59.7x44.4 (Mount Stewart, National Trust, as by Prince Hoare. Don Lady Maire Bury (1921–2009) 1976) φv



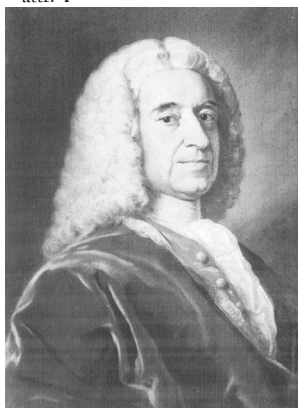
Young man (Petworth, National Trust, cat. no. 647, as Hoare) [v. English sch.]

- J.395.1643 Gentleman, crayons, plate glass (Benjamin Bond, Esq.; London, Christie's, 28.IV.1788, Lot 50, 3 gns; Lucas)
- J.395.1644 Gentleman in grey coat, blue waistcoat, pstl, 56x43 (London, Christie's, 6.XII.1912, Lot 47, 5 gns; Buttery)
- J.395.1645 A divine, wearing gown and bands, pstl, 56x43 (London, Christie's, 6.XII.1912, Lot 48, 3 gns; Rutley)
- J.395.1646 Gentleman in Vandyke costume of mauve satin, pstl, 58.5x44.5 (London, Christie's, 8–9.V.1913, Lot 200, 3 gns; Justice)
- J.395.16462 =?gentleman in pink dress with white lace Vandyke costume of mauve satin, pstl, 58.5x43 (Asher Wertheimer; sale p.m., London, Christie's, 18.VI.1920, Lot 1 n.r., 13 gns; Clements) [cf. portrait of Clements *supra*]
- J.395.16464 Young man in brown dress, m/u, 71x56 ov. (London, Christie's, 14.XII.1917, Lot 100; Agnew's, stock no. 5069, for Rt. Hon. F. Leverton Harris)
- J.395.16465 Gentleman in brown coat; & pendant:
J.395.16466 gentleman in a blue coat, pstl, 53x44.5 (Captain B. C. Vernon-Wentworth, Wentworth Castle, Barnsley; London, Christie's, 13.XI.1919, Lot 4 n.r.)
- J.395.1647 Gentleman in blue coat, red vest, pstl, 54.5x44.5 (London, Christie's, 22.II.1924, 4 gns; Hager)
- J.395.1648 Naval officer in blue coat, his hat under his left arm, pstl, 60x51 (London, Christie's, 27.III.1925, 11 gns; Stirling)
- J.395.1649 Gentleman in brown coat, white stock, pstl, 60x44.5 (London, Christie's, 21.I.1927, Lot 1 n.r., 5½ gns, Thursby) Φ



J.395.1651 Gentleman in blue coat embroidered with gold braid, red vest, white stock, white lace frills, pstl, 60x44.5 (Sir Francis Astley-Corbett, Bt; London, Christie's, 8.VII.1927, 18 gns; Storey; London, Christie's, 16.XII.1927, 15 gns; R. Ward)

J.395.1652 Man, pstl, 60x43 (Earl of Crawford) attr. Φ



J.395.1654 Gentleman, pstl, 53.5x43.5 (London, Sotheby's, 1.IV.1976, £45)

J.395.1655 Gentleman, pstl, 60x44.5 (London, Sotheby's, 24.III.1977, Lot 95 repr., £120) φ



J.395.1657 Gentleman, pstl, 59.5x44 (London, Christie's, 20.XI.1979, Lot 102 n.r., £700)

J.395.1658 Gentleman, pstl, 59.5x44.5 (London, Sotheby's, 16.VII.1981, Lot 67 repr., est. £600–800, £460) Φ

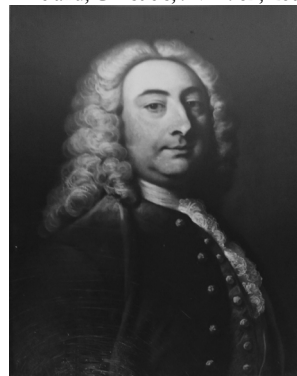


Photo courtesy Sotheby's

J.395.1661 Man, pstl, 60x44 (PC cat. no. 3) φ



J.395.1663 Gentleman, pstl, 61x43 (Adare Manor, Ireland, Christie's, 9.VI.1982, Lot 135, £550) φ



J.395.1665 Cupid, pstl/ppr, 58.5x43, ?a/r Bolognese old master pnt. (London, Christie's, 8.VII.1986, Lot 90 repr., est. £400–600, £460 [=£496], London, Christie's, 7.XI.1995, Lot 4 n.r., est. £800–1200. London, Christie's, 2.IV.1996, Lot 6 n.r., est. £600–800, £750 [=£862]) Φ



Photo courtesy Christie's

J.395.1668 Man in a green coat, pstl/ppr, 60x44.5 (London, Sotheby's, 28.V.1998, Lot 545 repr., est. £1000–1500, b/i)



J.395.1675 Man in a red coat, pstl, 61x46 (Noel Purcell (1922–), Westbury, Monkstown; sale, de Veres, 19.IX.2011, Lot 95 repr., est. €2–3000) φ



J.395.16811 Man in a blue coat, red and gold embroidered waistcoat, pstl, 57.5x44.5, c.1760 (Newbury, SAS, 19.VII.2016, Lot 157 repr., follower of Hoare, est. £500–800. Art market 2018) [attr., ?] φαν



J.395.167 Homme en habit vert, gilet bleu avec or, pstl, 60x44 (Saint-Cloud, musée du Grand Siècle. Bern, Dobiaschofsky, 24.X.1979, Lot 543 repr., as Piot. Paris, Drouot, Renaud, 19.XII.2001, Lot 163 repr., attr. Piot, est. Fr15–20,000, Fr10,100; Pierre Rosenberg; don 2020). Lit.: Jeffares 2006, p. 595Cii, Éc. fr. [new attr.; ?] Φανσ



J.395.1677 Child, pstl, 56x41 ov. (Tony Haynes; Donnington, Dreweatts, 14.VII.2010, Lot 65 repr., circle of Hoare, est. £3–5000; Donnington, Dreweatts, 12.X.2011, Lot 6 repr., est. £2–3000, b/i; Donnington, Dreweatts, 2.X.2012, Lot 60 repr., follower of Hoare, est. £800–1200; Ian Stewart, Beal House, Yorkshire; Edinburgh, Lyon & Turnbull, 14–15.X.2020, Lot 348 repr., anon., girl, est. £600–900) φν



J.395.16812 Young man in a brown coat, pstl, 60.6x44.8 (London, Bonhams, 13.IX.2023, Lot 162 repr., attr., est. £1000–1500; Newbury, Dreweatts 1759, 10.X.2024, Lot 123 repr., attr., est. £700–1000) φα

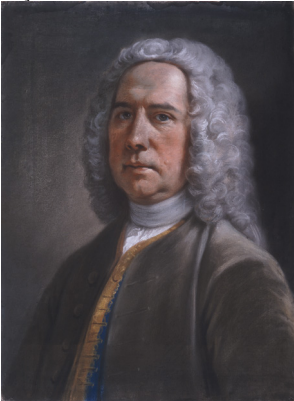


Photo courtesy owner

J.395.1673 Man in a dark grey coat with gold brandebourgs, pstl, 60x44.5 (London, Sotheby's, 6.VII.2010, Lot 202 repr., est. £3–5000, £6000) [?attr.; cf. Knapton; Pond] φασ



J.395.1679 Man in blue coat with gold embroidered edges, pstl, 60x45 (PC 2012; London, Sotheby's, 3.VII.2013, Lot 156 repr., est. £5–7,000, b/i; London, Sotheby's, 9.VII.2014, Lot 208 repr., est. £3–5000, £10,000 [=£12,500]) [new attr.] φσ



J.395.1683 Lady in blue gown, pstl/ppr, 59x44, n.s., d >1749 (London, Sotheby's, 19.III.2003, Lot 118 repr., est. £2–3000; London, Sotheby's Olympia, 2.VII.2003, Lot 154 repr., est. £800–1200, £800 [=£960]) [?attr.; cf. Cotes] Φανσ



Photo courtesy Sotheby's

J.395.1686 Diana, pstl, Royal Academy 1772, no. 117

J.395.1687 "Valuable paintings in...crayons... particularly the Four Seasons by Hoare, purchased out of the collection of the late Dr Charlton" (Dr Rice Charlton; PC, Russell Street, Bath, sale, p.m., Great Room, 10 Milsom Street, Plura, a few days after 27.XI.1794; & again 19–21.II.1795). Lit.: *Bath chronicle and weekly gazette*, 27.XI.1794 [4 Seasons mentioned], 19.II.1795

Market woman with fruit (Bath, Holburne Museum, as Hoare) [v. Dutch sch.]

J.395.169 Allegory of innocence, girl with a dove, pstl, 76x63.5 ov. (Buscot Park, The Faringdon Collection, cat. no. 6, attr.) Φ



Photo courtesy The Faringdon Collection

J.395.1693 Lady, pstl, 62x46 (London, V&A, P.37-1936. Legs Sir Herbert Mitchell 1936). Lit.: *Victoria & Albert annual review*, 1936, pl. 15, attr.; Lambourne & Hamilton 1980, n.r., attr. φσ



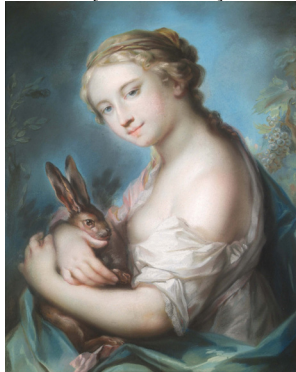
J.395.1695 Lady in pink dress with flowers, pstl, 60x46 (Milan, Villa Necchi Campiglio, Fondo Ambiente Italiano, collezioni Alighiero de' Micheli, inv. C-131. Acqu. 2004, as by Carriera) [??; new attr., ?; cf. Pond, Knapton] φαν



J.395.1697 Lady, pstl, 62x43 (Lord Barnard, Raby Castle) [attr.] φ



J.395.1699 Girl with a hare, pstl/bl. ppr, 63.5x50.8 (San Marino, Huntington Library, inv. 99.11. Acqu. 1999). Exh.: San Marino 2015. A/r Rosalba [Attr.; cf. Pond] φαν



J.395.1701 Sleeping Nymph of the Grotto, Ariadne asleep, 60x81, 1760 (Stourhead, National Trust, inv. 730719, STO/D/165). Exh.: Hoare 1990, no. 33 n.r. Lit.: Walpole 1928, p. 42 Φσ



Photo courtesy National Trust

J.395.1702 A Figure in miniature sleeping on a couch, pstl (artist's studio 1770). Lit.: Belsey 1987, citing Richardson 1770

J.395.1704 Head of a woman, ?Virgin Mary, pstl, 2a/r 17th century pnt., 44.5x36 (Stourhead, National Trust, inv. 730780, STO/D/275, cat. no. 153) Φσ



Photo courtesy National Trust

J.395.1707 Madonna and Child, pstl/ppr, 45.6x47.5 (Stourhead, National Trust, inv. 730759, STO/D/247). A/r Raphael school pnt. (Holkham). Attr. Φ



Photo courtesy National Trust

J.395.171 A Nymph: "Spring", pstl/ppr, 60x44.5 (Stourhead, National Trust, inv. 730784, STO/D/281) Φσ

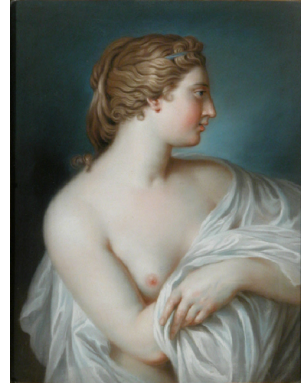


Photo courtesy National Trust

J.395.1713 ~version, pstl, 73.8x59 ov. (London, Royal Academy, inv. 03/893. Legs Prince Hoare 1835, as by Cotes). Attr. [cf. Mary Hoare] φβσ



J.395.1715 A Nymph: "Summer", pstl/ppr, 60x44.5 (Stourhead, National Trust, inv. 730787, STO/D/285. Legs Prince Hoare 1834) Φσ

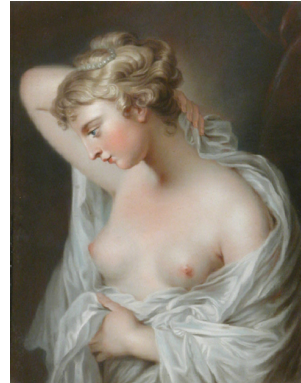


Photo courtesy National Trust

J.395.1716 ~repl., pstl, 60x44, c.1750 (comm. James Quin, actor, Bedford Street, Covent Garden, according to autograph inscr. verso. PC Italy 2022; Köln, Lempertz, 19.XI.2022, Lot

1662 repr., est. €10–14,000, €23,940) [new attr.] φν



~version, pnt., 72x58 (Parker Gallery, 2019, exh. Masterpiece Fair)

~grav. (Summer) Spooner, *The Bath beauty; The lady from bathing*, Robert Sayer

J.395.1719 ~cop., pstl, 60x44 (London, Christie's South Kensington, 5.VII.2006, Lot 540 repr., circle of Hoare, Venus, est. £700–900 with another sheet, b/i) φκνσ



J.395.17192 ~cop., pstl, 58x46 (Clearwater, Florida, Blackwell, 12.III.2022, Lot 24 repr., as Angelica Kauffman, est. \$500–1000) φκν



~cop., v. Mrs Pickard

J.395.1722 Two Venuses (Stourhead 1761). Lit.: Walpole 1928, p. 42

J.395.1723 Fancy picture of a sleeping girl, pstl, 42.5x65 ov. (Stourhead, National Trust, inv. 730789, STO/D/288.75) attr. Φασ



Photo courtesy National Trust

J.395.1726 ~version, pstl, ov. (William Drummond, adv. *Burlington magazine*, CXXVII/988, .VII.1985, p. xx repr.) φβ



J.395.1728 ~version, pstl/ppr, 66x43 ov. (London, Royal Academy, inv. 03/623, as Cotes. Legs

Prince Hoare 1835). Lit.: Johnson 1976, rejected no. 27 φσ



J.395.1732 Lady in profile, right, 72x57 (Sudbury Hall, National Trust, inv. 652622, SUD/D/19) Φ



Photo courtesy National Trust

Lady in blue dress and pink mantle (Sudbury Hall, National Trust, SUD/D/32, manner of Hoare) [v. Read]

J.395.1737 Four fancy pictures, m/u (comm. Lord Egremont, Petworth; invoice, 28.IX.1763, 30 gns. Not located 2012). Lit.: Hoare 1998, no. 20a

J.395.1738 Four fancy pictures, m/u (comm. Lady Ailesbury; invoice, 60 gns). Lit.: Hoare 1998, p. 46, no date cited [?c.1760]

J.395.1739 Madonna in scarlet drapery in the style of Carlo Maratti, pstl (artist's studio 1770). Lit.: Belsey 1987, citing Richardson 1770

J.395.1739 Venus, crayons, plate glass (London, Greenwood, 20.II.1792, Lot 98)

J.395.174 Lady, crayons (Charles Cutter; London, Christie's, 11.VI.1813, Lot 17 part, £1/13/-; Charles Spackman)

J.395.1741 La dormeuse, 43x65 ov. (Carr-Gomm 1911). Exh.: Paris 1911, no. 66

J.395.1742 La sieste, 43x65 ov. (Carr-Gomm 1911). Exh.: Paris 1911, no. 67

J.395.1743 Lady in blue dress with grey veil, pstl, 59.7x44.5 (Sir George Chetwynd, Bt, Grendon Hall, Atherstone; London, Christie's, 24.II.1912, Lot 52 n.r.; Parsons)

J.395.1745 Lady in white satin dress, blue scarf, pstl, 56x43 (London, Christie's, 6.XII.1912, Lot 44, 17 gns; Renton)

J.395.1746 Lady in black and blue dress, brown scarf, pstl, 56x43 (London, Christie's, 6.XII.1912, Lot 45, 15 gns; Huggins)

J.395.1747 Lady in blue dress, mauve ribbon and scarf, pstl, 56x43 (London, Christie's, 6.XII.1912, Lot 46, 10 gns; Renton)

J.395.1748 Lady in pink and grey dress, with white sleeves tied with blue bows, pstl, 56x43 (London, Christie's, 13.XII.1912, Lot 114, 10 gns; Miss Garland)

J.395.17485 Lady in blue dress with slashed sleeves, pearl ornaments, pstl, 59x44.5 (Capt. Bettelheim; London, Christie's, 22.V.1914, Lot 3, 5 gns; Justice)

Lady in white décolleté dress, with blue cloak, wearing a pearl necklace (London, Christie's, 19.V.1916, Lot 126, as Liotard; Agnew's picture stock no. 4754,

transferred to drawing stock no. 8408, attr. changed to William Hoare), v. Liotard, 1.49.2535

J.395.1749 Lady in white and pink dress, pstl, 55x43 (London, Christie's, 23.VI.1916, Lot 53, 2 gns; P. Moore)

J.395.174902 Lady in blue dress with white lace cap and frills, pstl, 57x43 (Durlacher Brothers; Red Cross sale, London, Christie's, 20.IV.1918, Lot 1845 n.r., 30 gns; Carbutt)

J.395.174905 Lady in brown bodice with white frills, ermine cloak, pstl, 57x44.5 (Captain B. C. Vernon-Wentworth, Wentworth Castle, Barnsley; London, Christie's, 13.XI.1919, Lot 3 n.r.)

J.395.17491 Lady in yellow dress with festoon of flowers, pstl (London, Christie's, 26.IV.1920, Lot 61, with Rosalba, Zanetti, 30 gns; Holland)

J.395.17492 Girl in white dress, leaning on a balcony; & pendant: J.395.17493 girl, in pink and green scarf, pstl, 60x44.5 (London, Christie's, 26.IV.1920, Lot 62, 25 gns; Furlough)

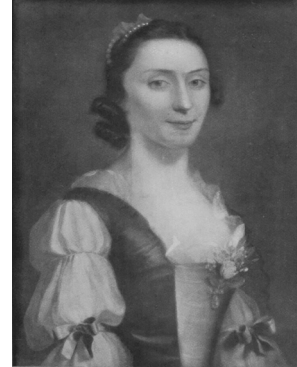
J.395.17494 Lady in white satin dress; & pendant: J.395.17495 lady in blue and white dress, pstl, 60x44.5 (London, Christie's, 26.IV.1920, Lot 63, 28 gns; Cooper)

J.395.175 Girl in white dress, with flowers, pstl, 43x32 (London, Christie's, 16.III.1923, Lot 35 n.r., 4 gns; Loveless)

Lady in fancy dress (London, Christie's, 17.VII.1925, Lot 20, as Hoare; Cox) [v. Cotes]

J.395.1752 Lady in a white dress, pink scarf, blue hat, pstl, 61x46 (London, Christie's, 27.VI.1927, 7 gns; Standish)

J.395.17525 Lady, blue bodice, pstl, 56x44.5 (Lane; London, Jackson Stops, 5–7.VII.1927, Lot 893 repr., as by Prince Hoare) [new attr., ?] φαν



J.395.1753 Lady in black dress with flowers, pstl, 59.7x44.5 (London, Christie's, 1.III.1935, 15 gns; Miss Ward)

J.395.1754 Girl in white, with flowers, pstl, 43x32 (Sir James Roberts, Bt; sale p.m., London, Christie's, 20.III.1936, 4 ½ gns; Gill & Reigate)

J.395.1755 Lady in yellow dress with garland of flowers; & pendant: J.395.1756 lady, in yellow dress with white lace collar, pstl, 58.5x44.5 (Sidney Hand; London, Christie's, 5.XII.1952, 22 gns; Manenti)

J.395.1757 Lady, pstl, 58.4x43 (London, Christie's, 20.XI.1979, Lot 101, £400)

J.395.1758 Lady, pstl, 59.5x44.5 (London, Sotheby's, 16.VII.1981, Lot 66 repr., est. £400–600, £320) Φ



Photo courtesy Sotheby's

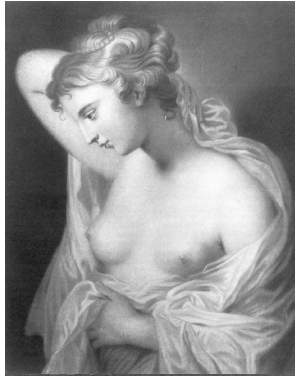
J.395.1761 Young lady in a white dress and bonnet, pstl, 58.5x43 (art market, Bath, c.1960; London, Christie's, 14.VI.1983, Lot 56 repr., attr., b/i; London, Bonhams, 10.IV.2024, Lot 179 repr., est. £1000–1500, b/i; London, Bonhams, 6.IX.2024, Lot 57 repr., est. £800–1200, £(832) Φα



Photo courtesy Christie's

J.395.1764 Woman in a savoyard cap, bust length, pstl, 58x42.5 (London, Christie's, 19.XI.1985, Lot 194 n.r., with Mary, Queen of Scots, est. £1800–2500, b/i)

J.395.1765 The Four Seasons, each 58.5x44.5 (Westhorpe Hall, Nottinghamshire; London, Christie's, 19.XI.1985, Lot 195 repr., est. £4–6000, £7000). Exh.: London 1986, no. 21; Hoare 1990, nos. 28–31. A/r antique sculptures of Venus: Spring, Crouching Venus (Uffizi) and Capitoline Venus; Summer: Venus Callipyge, Farnese collection; Winter: Medici Venus Φ



Photos courtesy Christie's

J.395.1766 The Four Seasons, crayons (Wilton 1795). Lit.: *Aedes Pembrochiana*, 1795, p. 120

J.395.17761 ~Summer; & J.395.17762 Winter, pstl/ppr, 59.7x44.4 (Wilton House). Lit.: Russell 2021, no. 167/168 n.r.

J.395.177 ~repl. (Summer), pstl (artist's studio 1770). Lit.: Belsey 1987, citing Richardson 1770

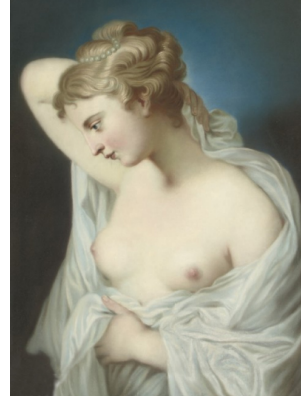
J.395.1771 ~version, Winter, pstl (Dr h.c. Hans Zist, Basel-Rancate/Tessin; Basel, Kunsthau zum Gellert, 21–22.III.1980, as Liotard). Exh.: Geneva, Gedächtnisausstellung, 1943. Lit.: *Weltkunst*, 1980, p. 2092f repr. φβ



J.395.1773 ~version, Winter, pstl (24.V.1994, as French 19th century) Φβ



J.395.1775 ~version, Summer; & pendant: J.395.1776 Autumn, pstl/ppr, 58.4x44.2 (Alleyne FitzHerbert, 1st Baron St Helens (1753–1839); don: his nephew's wife, Lady Agnes FitzHerbert; desc.: London, Christie's, 22.I.2009, Lot 598 repr., est. £15–20,000, £30,000). Lit.: *A catalogue of some of the pictures at Tissington Hall the seat of Sir William FitzHerbert Baronet*, 1859, as "Venus and Diana, crayons, by Rosalba"; N. FitzHerbert, *Tissington Hall – pictures*, 1938, no. 162/163 φ





~cop., Summer, pnt., 79x66 (London, Christie's South Kensington, 8.III.2001, Lot 404. Newbury, Dreweatts 1759, 27.V.2021, Lot 163 repr.)

J.395.1779 Autumn; & Head of the Madonna, pstl/ppr, 45x38 (London, Christie's, 8.VII.1986, Lot 91 n.r., est. £200–300, £151)

J.395.178 Lady in a white dress with a blue cloak, pstl, 58.5x44 (desc.: John George Baillie-Hamilton, Earl of Haddington, Tynninghame, East Lothian; Sotheby's, 28–29.IX.1987, Lot 558 repr., est. £1200–1800) Φ



Photo courtesy Sotheby's

J.395.1783 Lady in blue dress with yellow shawl, pstl, 59x44, c.1760 (London, Phillips, 2.XI.1987, Lot 8 repr., est. £4–6000, £3600. London, Sotheby's, 15.III.1990, Lot 53 repr., £5000 [=£5500]) Φ



Photo courtesy Sotheby's

J.395.1786 Lady in a blue dress trimmed with ermine, pstl/ppr, 58.4x44.5, c.1750 (London, Sotheby's, 12.XI.1991, Lot 16 repr., est. £800–1200, £1309) Φ



Photo courtesy Sotheby's

J.395.1787 ~cop. (bead), pstl, 46x37 (Paris, Drouot, Beaussant Lefèvre, 25.IV.2025, Lot 51 repr., anon. XIX^e, est. €400–600) [new attr.] φκν



Young woman (London, Christie's, 2.IV.1996, Lot 3 repr., as Hoare) [v. Pond]

J.395.179 Lady, pstl, 59x44 (London, Christie's, 13.VII.1996, Lot 13 repr., est. £800–1200, £1350)

J.395.1791 Lady, in a white dress and blue shawl, pstl/ppr, 59x44 (London, Sotheby's, 14.XI.1996, Lot 57 repr., as Cotes, est. £600–800, £700. PC 2010; Malvern, Philip Serrell, 14.VII.2016, Lot 205 repr., as by Hoare, est. £600–900) [new attr.] φν



J.395.1793 Lady, pstl, 59.4x44.2 (Geering & Colyer a.1997). Lit.: Stewart & Cutten 1997, repr. Φ



Photo courtesy Geering & Colyer

J.395.1796 Lady, half-length, in a blue dress with pearls, pstl, 70x44 (Mrs H. J. Cadell; sale p.m., London, Sotheby's, 10.IV.1997, Lot 109 repr., est. £1000–1500, £2400 [=£2760]) φ



Girl in a blue shawl holding a rabbit or hare (Ramsbury Manor, Wiltshire; London, Sotheby's, 31.III.1999, Lot 87 repr.), v. a/r Carriera

J.395.1799 Lady in a white dress, blue sash, pstl (London, Christie's, 20.V.1999, Lot 74 repr., circle of Hoare, est. £600–800) φα



J.395.1803 Lady in a white satin gown with pink shawl, pstl, 61x45.5 (London, Phillips, 8.II.2000, Lot 80 repr., attr., est. £800–1200, £750) Φ



J.395.1805 Lady in a blue dress and yellow shawl, pstl, 59x44 (London, Sotheby's Colonnade, 11.X.1995, Lot 422 repr., £650 [=£727]. London, Sotheby's, 22.III.2000, Lot 99 repr., est. £2–3000, b/i) Φ



Photo courtesy Sotheby's

J.395.1808 Lady, 57.5x42.5 (London, Sotheby's, 28.XI.2002, Lot 214 repr., est. £3–4000, £2800 [=£3346]) Φ



Photo courtesy Sotheby's

J.395.1811 Lady, 76x64 (US art market 2002, as Cotes) [new attr.] Φν



J.395.1813 Lady in a blue dress, pstl, 60x47 (London, Sotheby's Olympia, 2.VII.2003, Lot 165 repr., attr., £540) [?attr.] Φπνσ



Photo courtesy Sotheby's

Young woman with flower in her corsage (New York, Sotheby's, 15.VII.2004, Lot 12 repr., attr.) [v. English sch.]

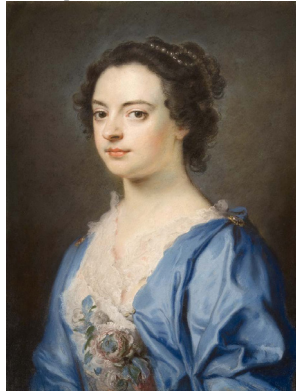
J.395.1819 Dame in blauem Kleid mit Perlenschmuck im Haar, pstl/ppr, 54x42 (Vienna, Dorotheum, 14.XII.2005, Lot 105 repr., English sch. est. €1300–1800) [new attr.] φν



J.395.1821 Lady, half-length, in a dress trimmed with yellow lace and ermine, pstl, 78.7x63.3 (London, Christie's, 10.XII.2008, Lot 5 repr., est. £10–15,000, £7500). *Olim* attr. Cotes φ



J.395.1823 Lady in a blue dress with pearls in her hair, pstl, 58.5x44.5 (PC 2009) φσ



J.395.1831 Lady in white dress with pearls and pink mantle, pstl, 59x44 (London, Sotheby's Olympia, 21.I.2004, Lot 101 repr., est. £4–600, £620 [=£744]. Chiswick, High Road Auctions, 17.IX.2013, Lot 2 repr., est. £1200–1400, b/i; 24.IX.2013) Φσ



J.395.1833 Lady in a white dress, blue ribbons, pearl choker and earrings, pstl, 59.5x44 (Exeter, Bearnas Hampton & Littlewood, 23–24.X.2013, Lot 376 repr., studio of Hoare, est. £1800–2500; Exeter, Bearnas Hampton & Littlewood, 21–22.I.2014, Lot 298 repr., studio of Hoare, est. £800–1200) φαν



J.395.1835 Lady in a white dress, pink mantle, with pearls; & pendant: J.395.1836 lady in a white dress with blue mantle, pstl, c.53x43); PC 2014) φσ



J.395.1839 Lady in a white dress, pstl, 62x45 (Lisbon, Cabral Moncada Leilões, 2–3.III.2015, Lot 516 repr., French sch., est. €600–900) [new attr., ?] φαυ



J.395.18392 Lady in a white dress, blue shawl, flowers in bodice, pstl/ppr, 65x50 (Cape Town, Stephan Welz, 29–30.X.2018, Lot 294 repr., studio of Hoare, est. ZAR50–80,000) φα



J.395.18393 Lady in yellow dress, pstl/ppr, 59.4x44.7 (desc.: Marquess of Downshire; London, Sotheby's, 6.VII.2022, Lot 171 repr., est. £3–5000) φ



J.395.18394 Lady in white dress, pstl/ppr, 61x45.5 (PC: 2022. Guy Peppiatt Fine Art 2025) φν



J.395.18396 Lady in white and pink slashed dress, ruff, Elizabethan attifet edged with pearls, pstl/ppr, 59.5x44 (Stansted Mountfitchet, 4.IV.2023, Lot 61 repr., est. £3–3000) φ



J.395.18397 Lady in white dress with blue wrap, pstl, 59x44 (Paul Whitfield (1942–2018); Cheltenham, Mallams, 28.VI.2023, Lot 46 repr., attr., est. £2000–3000) φ



J.395.18398 Girl in white dress, pink bodice with blue wrap, pstl, 59x44 (Horneman Antiques, London, a.2012; PC; London, Sotheby's, 6.VII.2023, Lot 157 repr., follower of Hoare, est. £3–5000, £7620) φ?ασ



J.395.1841 Man in a blue coat; & pendant: J.395.1842 lady in a pink dress, pstl/ppr, 59x44.5, [c.1750] (UK Government Art Collection GAC 1502/1503; dep.: UK Mission to United

Nations, Geneva, 2011. Sir Bruce Ingram 1963, as by Hamilton, c.1775) [new attr.] φ



J.395.1845 Gentleman in blue coat and white vest; & pendant: J.395.1845 lady, in pink dress, pstl, 60x44.5 (London, Christie's, 13.II.1925, Lot 32 n.r., 18 gns; Harrison)

J.395.1846 Gentleman in blue coat and white vest; & pendant: J.395.1847 lady in pink dress and white scarf, pstl, 58.5x44.5 (London, Christie's, 22.XII.1938, Lot 31 n.r., 14½ gns; H. Davis)

J.395.1848 Gentleman, pstl, pencil, 59.5x44, unfinished; & pendant: J.395.1849 lady, pstl, pencil, 59.5x44 (London, Sotheby's, 17.XI.1988, Lot 49 repr., est. £1200–1800) [?attr.] Φαυ





Photos courtesy Sotheby's

J.395.1851 ~(*lady*) =? pstl, 60x45 (English PC) φ



J.395.1853 ~pastiche, pstl, 60x44 (Salisbury, Woolley & Wallis, 15.III.2017, Lot 183 repr., as anon., 18th century, est. £600–1000) φπν



J.395.18399 Lady in Eastern dress, pstl/ppr, 59.5x44 (George Farrow; London, Roseberys, 4.VI.2024, Lot 84 repr., as follower of Rosalba, est. £1500–2000) [new attr.]φν



J.395.1855 Assumption of the Virgin, crayons (Wilton 1751–68). Lit.: Cowdry 1751, p. 16; Kennedy 1768, p. 71. A/r Rubens pnt. (Wilton)

J.395.18553 The Choice of Hercules: he is in the middle, with Virtue on one side, & Pleasure on the other, he leans to the former, pstl (artist's

studio 1770). Lit.: Belsey 1987, citing Richardson 1770

J.395.1856 Two children, crayons, Royal Academy 1770, no. 104

J.395.1857 Prudence instructing her pupil, crayons, Royal Academy 1772, no. 116

J.395.1858 A Zingara, crayons, Royal Academy 1774, no. 124

J.395.1859 A child laying on a sofa, crayons, Royal Academy 1779, no. 133

J.395.18595 Woman and child, crayons (William Fauquier; London, Christie's, 30.I.1789, Lot 104, 6 gns; Stevens)

J.395.186 Drawing in crayons (H. Wilks; London, Christie's, 17–18.XI.1797, Lot 35 part, MS addition to catalogue, £4/10/-)

J.395.1861 Venus and Cupid, pstl, 76x63.5 ov. (Buscot Park, The Faringdon Collection, cat. 7). Lit.: Gore 1969, p. 241 n.r., as Hoare. Traditional attr. Hoare, Russell φα



Photo courtesy The Faringdon Collection

J.395.1864 Infant Christ and St John the Baptist with angels, pstl, 94x124.5 (Stourhead, National Trust, inv. 730786, STO/D/284. Comm. Henry Hoare, 1762, "four boys after Rubens", £200). Lit.: Walpole 1928, p. 42; Hoare 1990, pp. 12, 14. A/r Rubens & Snyders pnt. (Vienna, KHM); version then at Wilton, sold Christie's, 15.IV.1983, Lot 62 φ



Photo courtesy National Trust

Anon. related pastels

Christopher ANSTEY (1724–1805), pnt. (London, NPG)

J.395.1869 ~cop., pstl/ppr, 59x49 (desc.: Anstey family; Cambridge, Cheffins, 4.III.2015, Lot 608 repr., attr. John Russell, £800–1200) φκ

William Pitt, 1st Earl of CHATHAM (1708–1778), statesman, bust, ¾ left, in rose coat, white cravat, powdered hair, pnt. (Pittsburgh, Carnegie Institute. Stow sale, 14.IX.1848, Lot 346)

J.395.1872 ~m/u [ppstl]. Lit.: PRO 30/70/5/337, 3 letters from William Hoare to Lord & Lady Chatham concerning the repainting of Lord Chatham's portrait in replacement of one damaged by damp, 1772–73

~repl., pnt., 127x101.5, c.1754(North Carolina Museum of Art)

~repl., pnt. (Lord Rosebery; London, Christie's, 5.v.1939, Lot 58; Spinks 1947. pc 1990). Exh.: Hoare 1990, no. 13 repr.

J.395.1875 ~cop., pstl/ppr, 59.7x46 (Petworth, inv. 249). Lit.: Collins Baker 1920, no. 249 n.r. [?cf. Elizabeth Grenville] φσ