

# Neil Jeffares, *Dictionary of pastellists before 1800*

## Online edition

### HENRI, Nicolas

*fl.* Toulouse 1772; Bordeaux 1773–80; France 1791

The Henri who exhibited as a peintre étranger in the Salons de Toulouse of 1772 and 1773 is probably the Henry who was *agréé* at the Académie de Bordeaux, 1773, peintre en miniature; he exhibited at the salons de Bordeaux and also at the Salon du Colisée, Paris, 1776. An advertisement in the *Annonces, affiches et avis divers ... de Bordeaux* (24.IX.1772) announced—

M. Henri, Artiste, nouvellement arrivé dans cette Ville, fait savoir au public qu'il peint le portrait en miniature & au pastel; il fixe les portraits au pastel sur la soie. On verra de ses Ouvrages chez lui, & on jugera de la ressemblance de ses portraits par ceux qu'il a commencés dans ce pays. Il est logé chez M. Lajeunesse, Tailleur, rue porte-Dijaux, près le Gouvernement.

In the *Almanach des peintres* of 1777 (p. 113) he is noted as having moved from Bordeaux to Paris, rue Plâtrière. He exhibited also in Salon de la Correspondance of 1779. Some works are in private collections in the south of France. Mesuret gives his forename as Nicolas (perhaps an unwarranted inference from Marionneau's N Henry) but suggests tentatively that he may be the same as the miniaturist Michel Henri nominated adjoint à professeur at the Académie de Marseille in 1786.

Whether he is the author of a group of pastels signed Henry, Hany, Hary or Hony or Beury, but not Barry or Huet (*qq.v.*) to whom some of the pastels were previously attributed, is uncertain. The pastel in Nice is evidently by the same hand. The neat handling and upturned mouth are similar to the features in a miniature in the Louvre (of the girondin Barbaroux, inv. RF 1740, c.1789) signed "Henry", but that is also close to the oval pastel signed "J B Henry" (*q.v.*) which does not seem to be by the same hand.

Among other homonyms, a Bon-Thomas Henry (Cherbourg 1766 – Paris 1836) is too young. It is unlikely too that the "Henry, élève de Regnault et de Landon, quai de l'Ecole, no. 14", who exhibited portrait drawings at the salons from 1798 was the pastelist; by 1800 he was "Henry, de Versailles, rue neuve des Petits-Champs"; he was perhaps the "Henry, [peintre] en miniature, professeur de dessin", at 28 rue de Thionville in the *Almanach du commerce de Paris*, 1811. A Claude Henry, peintre, aged 26, from Paris, was living at 8 rue Saint-Étienne, on 18.VII.1793 (carte de sûreté).

### Bibliography

Lemoine-Bouchard 2008; Marionneau 1883; Mesuret 1972, no. 2075; Sanchez 2004

### Pastels

J.3856.031 [*olim* J.4084.101] [??]Marie-Joseph CHENIER (1764-1811), régicide, membre du club des cordeliers et député à la Convention, pstl/ppr, 58x47, sd √ [illisible] "Ch. J. Huet/1790" (Vendôme, Rouillac, 3.II.2012, Lot 193 repr., as by Charles-Jean Huet, est. €200–300) [new attr., ?] φ?α?δν



J.3856.036 Etienne FAUCHON (1739–), contrôleur ambulant des fermes du roi à Angers, pstl, 60x48, inscr. *verso* "peint par Henry en 1775" (desc.: petite fille Jeanne-Madeleine-Marguerite Poulain de Ceintré. ?Comtesse de Villeroy. Lille, Mercier, 9.VI.2024, Lot 279 repr., éc. fr., inconnu, est. €300–400) φαυ



J.3856.041 Marie-Joséphine LABRANCHE (1785–), pstl, 60x49, sd √ "Henry Pinxit/1791" (Orléans, Matthieu Semont, 28.I.2020, Lot 71 repr., as by Bary, est. €200–300) [new attr.] φν



J.3856.051 François PAULIAN (1761–1822), maire de Nice, en habit bleu clair, pstl, 55.5x46, s (Nice, musée Masséna, inv. MAH 1686). Lit.: Marc Bouloiseau, "La Mairie de Nice de 1800 à 1803: Paulian et Torrini", *Nice historique*, 1986, p. 6 repr., as by Henry [new attr.; ?] φαυ



J.484.061 Yves SOULIGNAC (1758–1823), député à la Convention nationale, pstl, 57.5x44.5, sd √ illisible "Li.../1795" (PC 2018; Paris, Drouot, Millont, 29.XI.2018, Lot 77 repr., attr. Lieurneur, est. €300–500) [new attr. 2023, ?] φαυ

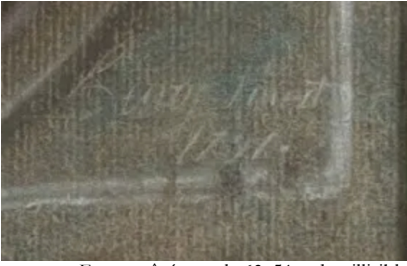


J.3856.081 Homme en habit gris, pstl, 60x48, sd √ "Henry Pinxit/1785" (Geneva, Genève Enchères, 29.IV.2024, Lot 3001 repr., est. SwFr200–300, SwFr170; PC) φ



J.3856.091 Homme en habit noir, pstl, 60x48, sd √ "Henry Pinxit/1791" (Claude Seignolle; Paris, Drouot, Gros & Delettrez, 24.I.2023, Lot 86 repr., as by Bary, est. €400–600) [new attr.] φν





J.3856.101 Femme âgée, pstl, 63x51, sd \ illisible  
Henry 1788 (Dijon, Vrigille & Bizouard,  
12.XII.2008, Lot 62 repr., est. €300–400) [new  
attr.] φν



J.3856.102 Jeune fille, pstl, 58x48, sd \ illisible 1792  
(Perpignan, Ruffat, 26.II.2025, Lot 351 repr.,  
est. €100–150) [new attr.] φν



J.3856.103 Portraits, pstl, Salon de Toulouse 1772,  
no. 9  
J.3856.104 Portrait, pstl, Salon de Toulouse 1773,  
no. 144 (M. Mours 1773)