

# Neil Jeffares, *Dictionary of pastellists before 1800*

Online edition

## **GIRARDET, Jean**

Lunéville 13.XI.1709 – Nancy 28.X.1778

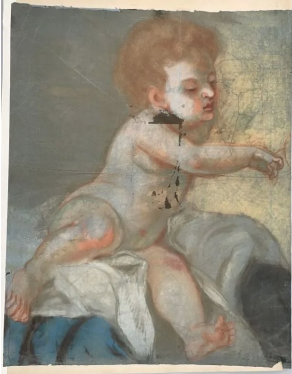
Peintre du roi de Pologne. In Commercy, 27.VIII.1748, he married Elisabeth-Françoise Pelletier. His painting of Stanislaw Leszczyński, from which numerous other portraits are derived, is evidently close to the lost portrait by Lundberg (*q.v.*) engraved by Moitte. The attribution of a damaged but unimpressive copy of an old master does not seem particularly convincing.

### **Bibliography**

Jacquot 1899, p. 450; Lemoine-Bouchard 2008; Voreaux 1998

### **Pastels**

J.3496.051 Putti, pstl/ppr, 63x50.5, inscr. "Girardet" (cabinet de M. Morey. Paris, Audap, 28.III.2024, Lot 17 repr., est. €200–300). A/r Andrea del Sarto φα



### **Anon. related pastels**

STANISLAW LESZCZYNSKI, pnt., 76.5x60.5 (Versailles, MV 4384)

~grav. Lit.: Charles-Gaffiot & al. 2003. p.144 repr.

J.3496.101 ~version, pstl (Stupinigi, inv. G.1.21, as by Liotard) [new attr.] φν

