

Neil Jeffares, *Dictionary of pastellists before 1800*

Online edition

German, Austrian and Central European Schools

UNNAMED SITTERS &c.

Unknown men – museums

J.92.1779 Bildnisse preußischer Heerführer und Offiziere aus der Armee Friedrichs des Großen, 8 pstls (*olim* Berlin, Hohenzollernmuseum Schloß Monbijou, GKI 42537–42544; lost a.1945)

J.92.178 Herr in brauem Rock, Halstuch und Spitzenjabot, pstl/pchm, 30.5x24 (Berlin, SMB, inv. GHZ 88/20. Don Frau Elke Wulk-Voltmer). Lit.: Bartmann & Ulferts 1990, no. 9 repr. φ



J.92.1782 Jung Mann in blauer Jacke und Spitzenjabot, pstl/pchm, 31.3x23.4 (Berlin, SMB, inv. GHZ 88/21. Don Frau Elke Wulk-Voltmer). Lit.: Bartmann & Ulferts 1990, no. 10 repr. φ



J.92.1784 Unknown man, pstl/ppr, 46x36, inscr. "Alajos sz. 1780" (Bratislava, Slovak National Gallery, K 6045). Central European sch., end 18th century

J.92.1785 Jung Mann in blauer Jacke und Spitzenjabot, pstl, 44x33 (Veste Coburg, inv. M.114) φ



J.92.1787 Officier de Napoléon, pstl/ppr, 63.2x52.5 (Erfurt, Museen der Stadt Erfurt,

Angermuseum, Graphische Sammlung, inv. VII 67). German sch., c.1810

J.92.1788 Clerc de Napoléon, pstl/ppr, 63.2x52.5 (Erfurt, Museen der Stadt Erfurt, Angermuseum, Graphische Sammlung, inv. VII 68). German sch., c.1810

J.92.1789 Un ecclésiastique, pstl/pchm, 15.7x12.1 (Hamburg, Museum für Hamburgische Geschichte, Miniaturen, inv. 1911-0424. Acqu. 1911). Lit.: Jaacks 1992, 224, Abb. 224

J.92.17895 Un abbé, pstl/ppr, 23x17.5 (Klagenfurt, Elisabethinen-Konvent, inv. 71). Lit.: Kernbauer & Zahradnik 2016, no. 73 repr. φ



J.92.179 Unknown man, pstl/pchm, 38.5x31.8 (Koblenz, Mittelrhein-Museum, G 1968/34). German sch., c.1800

J.92.1791 Old man with fur trimmed blue coat, pstl/ppr, 50.4x340 (Koblenz, Mittelrhein-Museum, M 245. Don Mantell 1922). German sch., 18th century

J.92.1792 Un artiste, pstl, 70x54, s "Christoph..." (Kronberg, Hessische Hausstiftung, Schloß Friedrichshof, inv. 3010) φ



J.92.1794 Eine Fürst, pstl, 70x47 (Nürnberg, Germanisches Nationalmuseum, inv. Gm 1259) φ



J.92.1795 Homme, pstl, 23x18.5, inscr. *verso* "Copié en petit par l'auteur du portrait original/GL 1786" (Orléans, mBA, inv. 1156A). Lit.: Klinka-Ballesteros 2005, no. 96 n.r.; Salmon 2018, fig. 62 φ



~pendant, Lavater, q.v.

J.92.1796 Young man in blue coat with ermine collar, pstl/pchm, 32x26 ov., ?Germany, 1780s (Hermitage. Vorontsov-Dashkov, Petrograd; acqu., 1920). Lit.: Каменская 1960, no. 120; Jeffares 2006, p. 621Bii, Russian sch. φ



J.92.1798 Homme en buste, de face, portant l'ordre de Marie-Thérèse, pstl, 48x38 (Trieste, Castello di Miramare). Lit.: R&L p. 309 n.r., ??Liotard

J.92.1799 Man in black coat, pstl/ppr, 33x26 ov., [c.1790], (Warsaw, Muzeum Narodowe, inv. 211733. Label *verso* "Westphal Berlin-Zehlendorf..." Acqu. 1954). Exh.: Warsaw 2015, no. 1.114 repr. [cf. Taubert] φ



J.92.1801 Jung Mann, pstl, 25.5x18.4, c.1775 (Weimar, SWKK, inv. KGe/00635) φ



J.92.1803 Jung Mann, pstl, 56x44, [c.1760] (Weimar, SWKK, inv. KGe/01399) φ



Unknown men – order of appearance

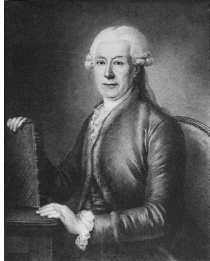
- 1.92.1806 Geistliche, pstl, ov. (Caroline Luise, inv. p.m., 29–30.VI.1784, no. 44)
 1.92.1807 3 Manns Köpfe, pstl (Caroline Luise, inv. p.m., 29–30.VI.1784, no. 423) [part]
 1.92.1808 Patriarchen, pstl (Caroline Luise, inv. p.m., 29–30.VI.1784, no. 535)
 1.92.1809 Manns Kopf friesiert, pstl (Caroline Luise, inv. p.m., 29–30.VI.1784, no. 548)
 1.92.181 Spanier Kopf, pstl (Caroline Luise, inv. p.m., 29–30.VI.1784, no. 554)
 1.92.1811 Alter Verliebter, pstl (Caroline Luise, inv. p.m., 29–30.VI.1784, no. 514)
 1.92.1812 Junger Herr in Uniform, pstl (Caroline Luise, inv. p.m., 29–30.VI.1784, no. 603)
 1.92.1813 Manns Portrait, pstl (Caroline Luise, inv. p.m., 29–30.VI.1784, no. 608)
 1.92.18136 [olim 1.64.3215] Brustbild eines älteren Herrn mit grauem Haar, aber jugendfrischem Gesicht, braunem Rock und weißer Halsbinde, pstl/pchm, 33x26 ov. (Frtiz Gersti, Berlin; Berlin, Keller & Reiner, 21.1.1908, Lot 32 repr., as by John Russel) [??attr.; German sch.] Φ



- 1.92.18137 [olim 1.64.3217] Brustbild eines jungen Herrn in blauem Rock und wei Binde. Auf dem langen schwarzen Haar ein Zylinder, pstl, 33x26 ov. (Frtiz Gersti, Berlin; Berlin, Keller & Reiner, 21.1.1908, Lot 34 repr., as by John Russel) [??attr.; German sch.] Φ

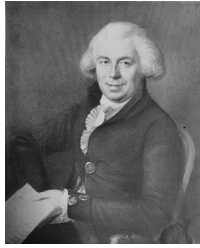


- 1.92.18132 Halbfigur eines Gelehrten in pelzverbrämtem, lilafarbigem Leibrock. Die Rechte ist auf ein Buch gestützt, pstl, 79x63, inscr. Perronneau (Sammlung Grimaldi, Cadiz. Berlin, Lepke, 14–15.X.1913, Lot 90 repr., as by Perronneau) [??attr.; =? 1.582.18476] Φ



- 1.92.181321 =?Homme accoudé sur un livre, pstl, 79x63 (baron de W[renk ou Wangen]; Paris, Drouot, Lair-Dubreuil, Rostand, 7–8.VI.1920, Lot 39 n.r., genre de Perronneau)

- 1.92.18133 Herr in schwarzem Rock, in blauem Sessel sitzend, einen Brief in der Hand, pstl, 72x58.5 (Berlin, Lepke, 6–7.XII.1933, Lot 51 repr., as by Liotard) [??attr.] Φ



- 1.92.1814 Offizier, pstl, 78x62 (olim Berlin, Hohenzollernmuseum Schloß Monbijou, GK II 11438; lost a.1945)

- 1.92.1815 Offizier, pstl, 74x58 (olim Berlin, Hohenzollernmuseum Schloß Monbijou, GK II 11439; lost a.1945)

- 1.92.1816 Herr in blauem Rock, pstl, 30x22 (olim Berlin, Hohenzollernmuseum Schloß Monbijou, GK I 141741; lost a.1945)

- 1.92.1817 Herr in grüner Zivilrock, pstl, 32.5x25 (olim Berlin, Hohenzollernmuseum Schloß Monbijou, GK I 141742; lost a.1945)

- 1.92.1818 Herrenbildnis, Brustbild von vorn, weiße Perücke mit Lockenwickeln über den Ohren, Zopfschleife, hoher weißer Kragen, blaue Weste, pstl, 45x30 (Dr Jerchel. Seized ERR, inv. Unb. 258; Jeu de Paume; Neuschwanstein; repatriated 13.XI.1945) Φ



- 1.92.182 Offizier, pstl, 42x38, c.1755–60 (Kletkamp PC 1960) Φ



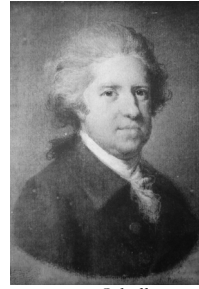
- 1.92.1822 Man, pstl, 35x28 (Köln, Lempertz, 6.VI.1972, German sch., XVIII^e, DM2000)

- 1.92.1823 Jeune garçon en buste presque de face, pstl, 45.5x38 (Paris, Drouot, Ader, Picard, Tajan, 31.I.1984, Austrian sch., Fr10,000)

- 1.92.1824 Gentleman, half-length in blue coat, pstl, 37.5x30.5 ov. (Lady Weiss, The Manor House, Little Marlow; London, Christie's South Kensington, 15.IX.1998, Lot 307 repr., German sch., est. £300–500) [cf. Dryander] Φ

- 1.92.1826 Head of a bearded man in a fur hat, pstl, 36.9x25.3 (London, Bonhams, 7.VII.1999, Lot 25A n.r., est. £600–800)

- 1.92.1827 Homme aux cheveux poudrés, pstl/ppr, 24x18 (Jordan de Urries y Azara, Madrid, 1965; D.a Asunción de Azara, Madrid, 1999). Lit.: Xavier de Salas, "Inventario de las pinturas de la colección de Dom Valentin Carderera", *Archivo español de arte*, XXXVIII, 1965, pp. 207–227, Lista 1840, no. 70, anon.; Mengs 1929, no. 8 repr., as Mengs, ?member of the Saxon court; Honisch 1965, no. 177 n.r., as Mengs; Roettgen 1999, EX265, ??Menges [cf. Hamilton] Φ



- 1.92.1829 Caballero, pstl, 58x45 (Madrid, Ansorena, 10.VII.2000, Lot 250 repr., German sch., c.1800, est. Pts225,000) Φ

- 1.92.1831 Gentilhomme portant un croix de Malte et l'ordre du Lion palatin, pstl, 50.3x42.5 ov. (Amsterdam, Sotheby's, 16–17.X.2001, Lot 401 repr., German sch., est. D f3–5000) Φ



Photo courtesy Sotheby's

- 1.92.1834 Gentilhomme, pstl, 60x40.5 (Anglet, Le Mouël-Chouffot, 26.IV.2003, as German sch., c.1800). Lit.: *Gazette Drouot*, 18.IV.2003, p. 128 repr. Φ



- 1.92.1836 Homme à la pipe, pstl/ppr, 66x55, inscr. ✓ "J E Liotard/1746" (Luzern, Fischer, IX.1974, Lot 2399; Zanchi 2003. Crissier, Galartis, 5.V.2017, Lot 139 repr., as éc. Suisse XIX^e a/r Liotard, est. SwFr900–1200; PC). Lit.: Didier Bodart, *The Zanchi collection*, Rome, 1985, no. 772 repr., as Liotard; R&L R72 n.r., entourage de La Tour [??; German sch.] Φ



- 1.92.1838 Homme en habit gris, gilet bleu, pstl/ppr, 16x12 (Munich, Hampel, Spring 2003, Lot 2101 repr.) Φ



- 1.92.184 Homme en habit rouge, manteau bleu, pstl/ppr, 30.5x23, sd monogram 1703

(Munich, Hampel, .VI.2003, Lot 1202 repr., est. €1100) φ



J.92.1842 Homme en habit gris, pstl/ppr, 60.5x45.5 (Rome, Christie's, 14.XII.2004, Lot 494 repr., Austrian sch., inconnu, est. €2–3000) [?English, French sch.] Φ



Photo courtesy Christie's

J.92.1845 Noble chasseur, pstl, 98x78.5 (Munich, Hampel, 18–19.III.2005, Lot 365 repr., €4800) φ



J.92.1847 Man in blue coat, pstl/wood, 50.3x36.6 (Plauen, Auktionshaus Mehli, 26.VIII.2005, Lot 15179 repr., est. €700. Heidelberg, Kunst & Kuriosa, 23.VI.2007, Lot 399 repr., est. €175) Φ



Photo courtesy Auktionshaus Mehli

J.92.185 A young prince of the house of Preußen, wearing the Schwarzer Adlerorden, pstl, 28x22.5 (Kgl. Haus Hannover; Schloß Marienburg, Sotheby's, 8.X.2005, Lot 1722 repr., est. €600–800, €4598 with three pnts., n.r.) Φ



Photo courtesy Sotheby's

J.92.1853 ?Tabakfabrikant, pstl, 37x29 ov., c.1790 (Hamburg, Schopman, 30.VIII.2006, Lot 67 repr., est. €250; PC Hamburg; Boris Wilnitsky,

2007, as Schröder, olim Kgl. Haus Hannover, €7500) [cf. Taubert] φ



J.92.1855 Junge Kürassieroffizier, pstl/crt., 40x32 (Munich, Hermann Historica, 19–20.X.2005, Lot 312 repr.) φ



J.92.1857 Prussian officer, pstl/crt., 47x36: & pendant: J.92.1858 same, one wearing the order Pour le Mérite (Morristown, New Jersey, Millea Bros, 30.X.2005, Lot 78 repr., est. \$600–900) φ



J.92.1862 ?Französisches Adler, pstl, 63x48 ov. (Erfurt, Eckert & Nolde, 6.V.2006, Lot 575 repr., est. €1400) φ



J.92.1864 Homme en habit bleu, pstl/?pshm, 49.5x36 ov. (PC 2006; Paris, Maigret, 8.XII.2006, Lot 57 repr., €850) [cf. Tischbein] φσ



J.92.1866 Man in a blue coat, pstl, 38x31.5 (Amsterdam, Sotheby's, 27.III.2007, Lot 189 repr., German, 19th century, est. €600–800) [cf. Lauer] φ



J.92.1868 Adelig mit Perücke, pstl, 36x28 ov. (Bad Vilbel, Blank, 25.XI.2006, Lot 949 repr., est. €1200; Bad Vilbel, Auktionshaus Blank, 31.III.2007, Lot 251 repr., 20. Jh, est. €750) φ



J.92.187 Fürstenporträt [maréchal de France portant le Saint-Esprit], pstl, 42x35 ov. (Bad Vilbel, Blank, 25.XI.2006, Lot 988 repr., est. €250; Bad Vilbel, Auktionshaus Blank, 31.III.2007, Lot 295 repr., est. €150) φ



J.92.1872 Nobleman, wearing a grey coat and a blue vest with a white lace collar, signing a contract, pstl, 57x42.5, inscr. "constructio" on the swan feather, illegible inscr. √, ?1762 (Amsterdam, Christie's, 10.XI.1999, Lot 483, est. Df2500–4500; Amsterdam, Sotheby's, 8.IX.2004, Lot 1042 n.r., German sch., est. €2000–3000; Amsterdam, Sotheby's, 4.IX.2007, Lot 60 repr., German, c.1762, est. €500–700, €2125) Φ



Photo courtesy Sotheby's

J.92.1875 Herr, pstl, 31.5x23.5, c.1790 (Dresden, Schmidt, 15.IX.2007, Lot 29 repr., est. €1200) φ



J.92.1877 Nobleman, pstl, 30x25 (Amsterdam, Sotheby's, 30.X.2007, Lot 472 n.r., with Gräfin

Philipp August von Platen-Hallermund and two unidentified portraits)

J.92.1878 Nobleman, pstl, 30x27 (Amsterdam, Sotheby's, 30.X.2007, Lot 472 n.r., with Gräfin Philipp August von Platen-Hallermund and two unidentified portraits)

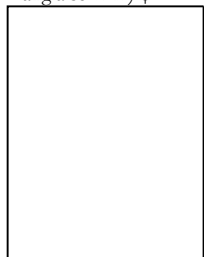
J.92.1879 Herr, pstl/ppr, 13.5x11.5 ov. (Köln, Van Ham, 15–17.XI.2007, Lot 692 repr., est. €800) φ



J.92.1881 Herr, pstl/ppr, 56x43. (Augsburg, Rehm, 9–10.XI.2007, Lot 8135 repr., est. €800) φ



J.92.1883 Gentleman in a blue coat, pstl, 24x19 ov. (Arles Trinquetaille, Holz Artles, 6.XII.2008, Lot 131 repr. Pamiers, Farbos, 28.II.2009, Éc. anglaise XIX^e) φ



J.92.1885 Ein alter Mann in türkischer Tracht, pstl/ppr, 55x43 (Köln, Lempertz, 19.XI.2005, Lot 1238 repr., attr. Dietrich, €1500. Düsseldorf, Steinbüchel, 11–12.VI.2010, Lot 109 repr., anon., est. €250) φ



J.92.1887 Preußische Offizier, pstl, 48x37, c.1780 (Bonn-Tannenbusch, Plückbaum, 25–26.II.2011, Lot 1711 repr., est. €250) φ

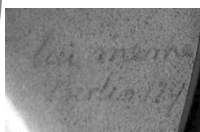


J.92.1889 Man in black coat, half-length, profile, gch., pstl, 28.5x23.5 (Oakland, CA, Clars

Auction Gallery, 15.X.2011, Lot 349 repr., est. \$400–600) [cf. Dietzer; Reinhold] φ



J.92.1891 SELBSTPORTRAIT, pstl, 39.5x32.5 ov., sd "lui-meme/Berlin 179..." (Paul Kleinwald Art and Antiques Inc, Great Barrington, Massachusetts; 2012) φ



J.92.1894 Man in blue coat, red waistcoat, pstl, 35x29 (Marlborough, Skinner, 14.VII.2012, Lot 818 repr., as American, 19th century, est. \$200–300) [?; German sch., cf. J. Ph. Bach] φ



J.92.1896 Herr in grauem Rock und roter Weste, pstl/ppr, 46x32 (Vienna, Dorotheum, 6.II.2013, Lot 138 repr., est. €600) φ



J.92.1898 An art collector, in oriental costume, pstl/ppr, 55x45, inscr. *verso* indistinctly in German, 1781 (Copenhagen, Bruun Rasmussen, 16.II.2013, Lot 84 repr., est. SKr1500–2000) φ



J.92.190 Herr in blauem Rock, pstl/ppr, 35x26 ov., c.1790 (Nürnberg, Franke, 2.VIII.2013, Lot 3726 repr., est. €90) φ



J.92.1902 Man in grey coat, pstl, 53x48 (Durrow, Co. Laois, Sheppards, 24–26.IX.2012, Lot 695 repr., est. €300–500) φ



J.92.1904 Man in brown coat, pstl, 33x28 ov. (Oakland, California, Clars, 14–15.VI.2014, Lot 2194 repr., as follower of C. W. Peale. est. \$3–5000) φ



J.92.1906 Boy in blue coat, pstl, 24x20 ov. (PC 2014) φ



J.92.1908 Knight of the order Pour le mérite, in blue uniform, pstl, 50x40 ov. (Mutterstadt, Henrys, 26.IX.2015, Lot 6074 repr., est. €450) φ



J.92.191 Man in blue coat, red fur-trimmed mantle, pstl, 44.2x34 (PC 2015) φ

J.92.1912 Man in blue coat, gold embroidered waistcoat, pstl, c.50x40 (PC 2015) φσ

J.92.1914 Man in red fur-trimmed gown with fur hat and red tassel, pstl, 56x44 (PC 2016) φ

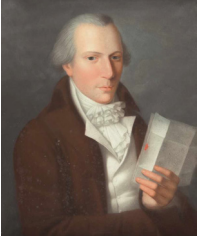
J.92.19141 Man in puce coat, blue waistcoat, in an interior, pstl, 37x28 (Mainz, Wiesbaden, 2–3.XII.2016, Lot 1816 repr., est. €70) φ



J.92.19142 Man in red coat, blue collar, pstl/ppr, 30.5x24.5 ov. (Köln, Van Ham, 17.xi.2017, Lot 1248 repr., as English sch., est. €1200–1500) [?; German sch., cf. Schröder] φ



J.92.19143 Herr im braunen Rock mit Brief in der Hand, pstl/ppr, 58x46 (Munich, Karl & Faber, 4.v.2018, Lot 148 repr., est. €2500–3000) φ



J.92.19144 Herr in blauer Jacke, pstl, 68x50 (Berlin, Dannenberg, 8.vi.2018, Lot 3918 repr., est. €500) [?German or French sch.] φ



J.92.19145 Adliger Mann mit grauer Zopfperücke und in blauer Kleidung, pstl, 48x38 (Rudolstadt, Wendl, 24–26.x.2019, Lot 4311 repr., est. €120; Boris Wilnitsky, as by Johann Heinrich Schmidt, as of duc de Brissac) [?attr.; ?identification – wrong coloured eyes; order probably Saint-Andrei, not Saint-Esprit; cf. Russian sch.] φ



J.92.19146 Man in a red coat trimmed with fur, pstl/pchm, 36x30 (PC Genoa 2019, *olim* as by Liotard) [?German or Italian sch.; cf. Hoyer] φ



J.92.191461 Mann in blauer Rock, pstl, 54x40 (Rudolstadt, Wendl, 22–24.x.2020, Lot 3215 repr., est. €350) φ



J.92.191462 Homme en habit bleu doublé de fourrure, tenant un porte-crayon, pstl, 52.5x42 (sale, details n/k, Lot 26, attr. Anton Graff, portrait d'un dessinateur. PC 2020) [?attr.] φ



Unknown women – museums

J.92.1917 Junge Frau mit Straußenfederhut, pstl/pchm, 39.7x31.5 ov., c.1780–90 (Berlin, SMB, inv. GHZ 70/27). Lit.: Bartmann & Ulferts 1990, no. 3 repr. φ



J.92.1919 Jeune femme en manteau bleu, pstl/ppr, 59.5x50 (Berlin, SMB, Nationalgalerie, inv. A III 724, German sch., c.1800/1810) [?cf. Danish sch.; ?same hand as Fru Boicke] φ



J.92.1921 Frau, pstl (Berlin, Stadtmuseum, inv. VII 60/648 x) φ



J.92.1923 Dame au fichu, pstl, 50x40.5, s inscr. → “Liotard” (Copenhagen, Statens Museum, KMS 4202. Bille-Brahe-Selby; Copenhagen, Winkel & Magnussen, 20.x.1938, Lot 30 repr., as Liotard; acqu. 1938) φ



J.92.1924 Dame in Blaue, pstl/ppr, c.1800 (Frankfurt, Museum Giersch der Goethe-Universität). Exh.: *Goethe und die Dame un Blau. Köpfe der Goethe Universität*, 12–28.VIII.2016 φ



J.92.1925 Dame, pstl/ppr, 31.5x27.5 ov. (Frankfurt, Städtisches Galerie, Graphische Sammlung, inv. 1708) φ



J.92.1927 Inconnue, pstl/pchm, 15.7x11.8 (Hamburg, Museum für Hamburgische Geschichte, Miniaturen, inv. 1911-0425. Acqu. 1911). Lit.: Jaacks 1992, 226, Abb. 226. German sch., c.1775

J.92.1928 [=J.21.2651] Jeune dame en robe jaune décolletée, pstl, 47.5x36.5 (Köln, Wallraf-Richartz-Museum, inv. WRM 3524. Ante Topić Mimara; Köln, Lempertz, 21–24.iv.1939, Lot 661 repr., falsely as *ex* Sächsischen Sekondogenitur, Schloß Pillnitz. Stiftung des Ehepaars Elisabeth und Eugen Reintjes, 's-Heerenberg, Niederlande; don a.1960). Lit.: Christina Heße & Martina Schlagenhauser, *Wallraf-Richartz-Museum Köln. Vollständiges Verzeichnis der Gemäldesammlung*, 1986, p. 20, circle of Carreria; Mirna Megyerai, Tweet 15.iv.2024, noting cutting from 1935 cat. for J.21.2634, apparently supporting false provenance [?attr.] φπν



J.92.1929 Mädchen mit Vogelkorb, pstl/pchm, 60.5x49.2 ov. (Munich, Alte Pinakothek, inv. 7484). Lit.: Hipp & al. 2022, p. 112 repr. φ



J.92.193 Dame in höfischer Kleidung, pstl, 57x42.5 (Sacramento, Crocker Art Museum, inv. 732. Acqu. p.1910). Lit.: Roettgen 1999, no. EX313 n.r., ??Mengs, ?German, 1st half XVIII^e

J.92.1931 Dame, perruque poudrée, robe rose, pstl/ppr, 29x23 oct., Germany, c.1780 (Hermitage. Grand Duke Nikolai Mikhailovich; acqu. 1923) [cf. Bardou; Schmidt] φ



J.92.1933 Woman, pstl, ov. (Hermitage) [cf. British or other sch.] φ



J.92.1935 Hofdame, pstl, 27x22 ov. (Vienna, KHM, GG-8873a). Austrian sch.

J.92.1936 Hofdame, pstl, 27x22 ov. (Vienna, KHM, GG-8873b). Austrian sch.

J.92.1937 Hofdame, pstl, 27x22 ov. (Vienna, KHM, GG-8873c). Austrian sch.

J.92.1938 Hofdame, pstl, 27x22 ov. (Vienna, KHM, GG-8873d). Austrian sch. φ



J.92.194 Hofdame, pstl, 27x22 ov. (Vienna, KHM, GG-8873e). Austrian sch.

Unknown women – order of appearance

J.92.1942 Ein lachendes Frauenzimmer, pstl (Caroline Luise, inv. p.m., 29–30.VI.1784, no. 129)

J.92.1943 3 Frauenzimmer Köpfe, pstl (Caroline Luise, inv. p.m., 29–30.VI.1784, no. 423) [part]

J.92.1944 Ein Bettelmädgen, pstl (Caroline Luise, inv. p.m., 29–30.VI.1784, no. 514)

J.92.1945 Ein gros Frauenzimmer, pstl (Caroline Luise, inv. p.m., 29–30.VI.1784, no. 515)

J.92.1946 1 Frauenzimmer mit einer Traube, pstl (Caroline Luise, inv. p.m., 29–30.VI.1784, no. 519)

J.92.1947 1 seufzendes Frauenzimmer, pstl (Caroline Luise, inv. p.m., 29–30.VI.1784, no. 536)

J.92.1948 Ein Frauenzimmer im Winter Kleid, pstl (Caroline Luise, inv. p.m., 29–30.VI.1784, no. 555)

J.92.1949 Eine Mutter mit Kinder, pstl (Caroline Luise, inv. p.m., 29–30.VI.1784, no. 558)

J.92.195 Diana im Bad, en past (Caroline Luise, inv. p.m., 29–30.VI.1784, no. 560)

J.92.1951 Die heil. Maria, pstl/pchm (Caroline Luise, inv. p.m., 29–30.VI.1784, no. 571)

J.92.1952 Ein pastell Gemälde, ein Frauenzimmer in Pelz Kleidung (Caroline Luise, inv. p.m., 29–30.VI.1784, no. 574)

J.92.1953 Serenißima, klein, pstl/pchm (Caroline Luise, inv. p.m., 29–30.VI.1784, no. 577)

J.92.1954 Ein schmachtendes Frauenzimmer, pstl (Caroline Luise, inv. p.m., 29–30.VI.1784, no. 589)

J.92.1955 Ein angefangenes Frauenzimmer porträt, pstl (Caroline Luise, inv. p.m., 29–30.VI.1784, no. 590)

J.92.1956 Frauenzimmer klein, pstl (Caroline Luise, inv. p.m., 29–30.VI.1784, no. 592)

J.92.1957 Ein Frauenzimmer, porträt, pstl, ohn- ausgemacht (Caroline Luise, inv. p.m., 29–30.VI.1784, no. 593)

J.92.1958 Ein Frauenzimmer, pstlline Luise, inv. p.m., 29–30.VI.1784, no. 597)

J.92.1959 Ein Frauenzimmer Kopf, pstl (Caroline Luise, inv. p.m., 29–30.VI.1784, no. 602)

J.92.196 Ein Frauenzimmer Porträt, pstl/pchm (Caroline Luise, inv. p.m., 29–30.VI.1784, no. 605)

J.92.1961 Magd, pstl (Caroline Luise, inv. p.m., 29–30.VI.1784, no. 606)

J.92.1962 Ein Frauenzimmer, pstl (Caroline Luise, inv. p.m., 29–30.VI.1784, no. 607)

J.92.1963 Ein angefangenes Frauenzimmer Porträt, pstl (Caroline Luise, inv. p.m., 29–30.VI.1784, no. 609)

J.92.1964 1 Frauenzimmer (Caroline Luise, inv. p.m., 29–30.VI.1784, no. 615)

J.92.1965 Tête de vieille femme, coiffée d'un bonnet blanc tuyayté, lisant, tenant des besicles, pstl, 55x48 (L. Tabourier; vente p.m., Paris, Drouot, Chevallier, 20–22.VI.1898, Lot 124 repr., as Chardin, Ii3700) [?German sch.] φ



J.92.1966 [olim J.64.3565] Brustbild einer älteren schönen Dame mit grauem Lockenhaar, weißer Haube und blauer Schleife, hellblauem Überwurf mit weißem Einsatz, pstl/pchm, 33x26 ov. (Frtiz Gersti, Berlin; Berlin, Keller &

Reiner, 21.I.1908, Lot 33 repr., as by John Russel) [?attr.; German sch.] φ



J.92.1967 Weibliches Porträt, pstl, 65x53.5 (Vienna, Pisko, 15.XII.1909, Lot 152 repr., as by Rosalba) [??] φ



J.92.1969 Dame in blaues Kleid, pstl, 32.5x25 (olim Berlin, Hohenzollernmuseum Schloß Monbijou, GK I 41743; lost a.1945)

J.92.197 Bildnis einer sitzenden jungen Frau, pstl/pchm, 65x54, German sch., c.1790 (acqu. for Führermuseum, Linz, Munich CCP, Mü-Nr 43011 194759; Frau Dietmer, Munich)

J.92.1971 Damenporträt, Halbfigur, pstl/ppr, 58x49.5, German, c.1800 (Hotel Bayerische Hof, Munich; seized by Hitler; Munich CCP, Mü-Nr 13880 1946)

J.92.1972 Mädchenbildnis, pstl, late 18th century (Dr Carl Meindl, Agnesstr. 6, Munich; seized by ?ERR; Munich CCP, Mü-Nr 17967 1945–48)

J.92.1973 Young woman in a white dress, pstl, 22.3x30 (London, Christie's, 9.VII.1981, Lot 347 n.r., with pendant, est. £500–800)

J.92.1974 Lady in a white dress with a blue shawl, pstl, 22.3x30 (London, Christie's, 9.VII.1981, Lot 347 n.r., with pendant, est. £500–800)

J.92.1975 Dame im weißen Kleid, pstl/crt., 48x37 ov.; & pendant: J.92.1976 Dame im weißen Kleid, pstl/crt., 48x37 ov., c.1800 (Fürst von Thurn u. Taxis; Schloß St Emmeram, Sotheby's, 19.X.1993, Lot 3170 repr., German sch., est. DM3–4000) φ



Photo courtesy Sotheby's

J.92.198 Junge Dame an ihrem Toilettetisch, pstl/crt., 56x46 ov. (Fürst von Thurn u. Taxis; Schloß St Emmeram, Sotheby's, 19.X.1993, Lot 3172 n.r., German sch., est. DM1500–2000)

J.92.1981 Dame, pstl, 38.4x28.4, inscr. "Roslin"? (London, Sotheby's, 18.IV.1996, Lot 202 n.r., Continental sch., c.1790, est. £400–600, £402)

J.92.1982 Dame en robe rose, pstl, 40x33 ov. (Königliche Haus Sachsen; Amsterdam, Sotheby's, 16–17.X.2001, Lot 410 repr., German sch., est. Df1000–1500) φ



Photo courtesy Sotheby's

J.92.1985 Jeune femme en robe blanche, manteau rouge, pstl/pphm, 37.8x29.9 ov. (New York, Sotheby's, 25.I.2002, Lot 143 repr., French sch., est. \$3–4000). Lit.: Jeffares 2006, p. 605Aiii, *Éc. fr.* [?]; cf. Schröder] Φ



Photo courtesy Sotheby's

J.92.1988 Personification of Painting, pstl/ppr, 43x36 ov. (Prague, Meissner Neumann, 8.XI.2003, Lot 86 repr., est. CSK16–2,000) Φ
 J.92.1999 Dame, pstl, 40x30 (Munich, Hugo Ruef, 25.III.2004, Lot 1164 repr., est. €1800) Φ
 J.92.1994 Dame en robe blanche, manteau bleu, pstl, 33x25 (French art market, v.2004, as Russell) [cf. German sch., ?Schwartz] Φ

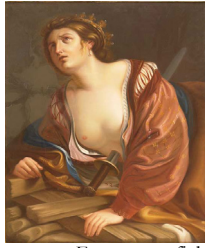


J.92.1996 Young girl, seated half-length, in a blue dress with white sleeves, pstl, 33.5x29 ov. (Amsterdam, Sotheby's, 8.IX.2004, Lot 1259 n.r., German sch., est. €2000–3000) Φ



Photo courtesy Sotheby's

J.92.1999 Dame in blauem, tiefdekollierten Kleid, pstl, 55x44 ov. (Stuttgart, Nagel, 28.IX.2004, Lot 634 repr., est. €800) Φ
 J.92.2001 Dame, pstl, 56.5x46 (Munich, Neumeister, 1.XII.2004, Lot 375 repr., est. €1000) Φ
 J.92.2003 'Tod der Dido [?Lucretia], pstl, 81x65 (Rudolstadt, Wendl, 4–5.III.2005, Lot 4301 repr., Ende 18. Jh.) Φ



J.92.2005 Femme au fichu linon, pstl, 13x10 ov. (Paris, Drouot, Libert, 10.VI.2005, Lot 218 n.r., *Éc. du Nord XVIII^e*, est. €400–500)

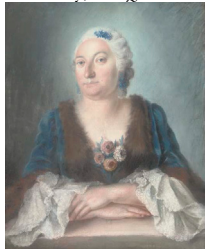
J.92.2006 Sculpture de femme, en buste, sur un socle, pstl, 18.8x11.4 (Paris, Christie's, 16.XII.2005, Lot 465 repr., German sch., beginning 18th century, est. €500–700) Φ



J.92.2008 Junge Dame im festlichen Gewand und mit blauem Hermelin besetzten Umhang, pstl/ppr, 60x54, c. ?1880 (Chemnitz, Auktionshaus Heckmann, 11.III.2006, Lot 3005 repr., Deutscher Meister 18. Jh., est. €250) Φ



J.92.201 Lady with a bouquet of flowers, pstl, 73.7x59 (London, Christie's South Kensington, 5.VII.2006, Lot 557 repr., Austrian sch., 18th century, est. £400–600, £420) [cf. Maucourt] Φ



J.92.2012 Dame, pstl, 36x28 ov. (Bad Vilbel, Blank, 25.XI.2006, Lot 976 repr., est. €240) Φ



J.92.2016 Lady in a blue dress, pstl/ppr, 57.5x46.5 (Leipzig, Kunstauktionshaus, 28.IV.2007, Lot 1076 repr., est. €600) Φ



J.92.2018 Lady in a purple and gold dress, pstl/ppr, 53x40 (Amsterdam, Christie's, 19–20.IX.2007, Lot 47 repr., follower of Felice Giani, est. €800–1200) [?German sch., manner of Schröder] Φ



J.92.202 Elegant lady playing the harpsichord, pstl, 43x35 (Amsterdam, Sotheby's, 30.X.2007, Lot 472 repr., with Gräfin Philipp August von Platen-Hallermund and two unidentified portraits) Φ



J.92.2022 Mädchen, pstl/ppr, 37x30 ov. (Zurich, Galerie Koller, 7.XII.2007, Lot 6442 repr., SwIt2–3000) Φ



J.92.2024 Young lady in an embroidered silk dress, pstl/ppr, 54x42 (Vienna, Dorotheum, 12.XII.2006, Lot 232 repr., circle of Goya, est. €3–5000. Erlangen, Bergmann, 15.III.2008, Lot 750 repr., attr. Carriera, est. €2000. Wiesbaden, 7.III.2009, Lot 499 repr., anon., est. €200) Φ



J.92.2026 Dame, pstl, 38x33 (Salzburg, Dorotheum, 18.III.2008, Lot 28 repr., *Éc. fr.*, est. €800–1000) [?; cf. Bardou] Φ



1.92.2028 Matrone mit schwarzer Seidenhaube, pstl/pchm, 47x33 (Vienna, Dorotheum, 31.III.2008, Lot 470 repr., est. €1000–1200) φ



1.92.203 Jeune artiste, pstl/ppr, 63.5x47 (London, Bonhams Knightsbridge, 29.X.2008, Lot 194 repr., German sch., c.1760, est. £4–6000, £5520)



1.92.2032 Lady in a blue dress with a garland of flowers in her hair, pstl/ppr, 49.2x43.3 (Corsican PC; Amsterdam, Sotheby's, 29.IX.2008, Lot 104 repr., est. €1500–2000) φ



1.92.2034 Edeldame als Diana verkleidet, pstl, 67x53 ov., c.1780 (Stuttgart, Rieber, 25–28.III.2009, Lot 1340 repr., est. €1980) φ



1.92.2036 Dame, pstl, 45x35, ?Vienna, c.1780 (Raubling, Auktionshaus Walter Ginhart, 30.X.2009, Lot 218 repr., est. €650) φ



1.92.2038 Dame mit blauen Bandschleifen, pstl/pchm, 48x37 ov. (Salzburg, Dorotheum, 17.XI.2009, Lot 205 repr., éc. fr., est. €500–700) φ



1.92.204 Jeune dame en robe bleue jouant de la guitare, pstl, 82x65 (Paris, Drouot, Cornette de Saint Cyr, 4.XII.2009, Lot 14 repr., suiveur de J. H. Tischbein, est. €4–6000) [cf. Bolomey] φ



1.92.2042 Lady in purple dress, blue ribbons, feathers and wreath in hair, pstl, 48x37 oct. (Battle, East Sussex, Burstow & Hewett, 24.II.2010, Lot 373 repr., anon., inconnu) φ



1.92.2044 Lady in a shot-silk dress, pstl, 52.8x40.6 (Brno PC; Brno, Zezula, 6.XII.2008, Lot 248 repr., attr. Carrier, est. €1459. Vienna, Dorotheum, 2.VI.2010, Lot 219 repr., Austrian sch., est. €1800–2000) φ



1.92.2046 Femme en buste, coiffée à plumes, pstl/ppr, 52x40 (Paris, Tajan, 26.XI.2010, Lot 43 repr., est. €700–900) φ



1.92.2048 Ältere Dame, pstl, 36x30 (Berlin, Leo Spik, 24–26.III.2011, Lot 181 repr., attr. Schröder, est. €1000; Berlin, Leo Spik, 22–24.III.2012, Lot 159 repr., attr. Schröder, est.

€1000; Berlin, Leo Spik, 6–8.XII.2012, Lot 233 repr., est. €800) [??attr.] φ



1.92.205 Mädchen mit blauer Schleife im Haar vor einem geöffneten Buch, pstl/pchm, 46x37 (Berlin, Bassenge, 26–28.V.2011, Lot 6298 repr., Deutsch, 18. Jh., est. €1400) φ



1.92.2052 Woman emerging from a curtained interior, pstl/ppr, 58.4x48.3 ov., c.1780 (Dr Tony Ryan, Lyons House; London, Christie's, 14.VII.2011, Lot 68 repr., est. £3–5,000, b/i; Kilkenny, Mealy's, 4–5.X.2011, Lot 1054 repr., as German sch., est. €2–3000; Kilkenny, Mealy's, 16–17.X.2012, Lot 1319 repr., est. €800–1200) φσ



1.92.2054 Young lady with mask, pstl (Köln, Lempertz, 19.XI.2011, Lot 1387 repr., est. €1200–1400) φ



1.92.2056 Junge Frau mit blauem Blättkranz in offenen Haar, und einem Sonnenemblem vor der Brust, pstl/pchm, 36.5x29 ov. (Hannover, Kasterm 3.XII.2011, Lot 18 repr., est. €1100) φ



1.92.206 Lady in a white dress with blue sash, pstl, 35x28 ov. [c.1790] (PC 2013; Paris, Drouot, Cornette de Saint-Cyr, 26.VI.2013, Lot 17 repr., éc. allemande, est. €400–600, €400; Boris Wilnitsky, as by J. Fr. A. Tischbein, of Henriette von Burgsdorff, =anon. pstl *supra*) [cf. Dryander] φ



J.92.2062 Lady in blue dress, lace bonnet, pstl, 52x48 (Durrow, Co. Laois, Sheppards, 24–26.IX.2013, Lot 673 repr., est. €400–600) [cf. Hirschmann] φ



J.92.2064 Dame in höfischer Kleidung und Perlschmuck, pstl, 53x40, [c.1745] (Frankfurt-am-Main, Döbritz, 8.XI.2014, Lot 202 repr., est. €800; PC 2015; Paris, Drouot, Boigirard Antonini, 24.VI.2015, Lot 31 repr., éc. allemande, entourage de Liotard, est. €3–4000) [circle of Liotard] φ



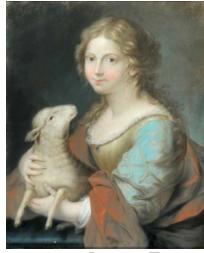
J.92.2066 Antike Göttin, pstl/pchm, 61x47 (Berlin, Leo Spik, 7.VII.2016, Lot 219 repr., circle of Angelica Kauffman, est. €2000) φ



J.92.20662 Frau in weißem Kleid und einer Haube vor grauem Hintergrund, pstl/ppr, 62x46 (Vienna, Dorotheum, 24.X.2016, Lot 138 repr., circle of Füger, est. €800). *Ohm* attr. Johann Martin von Wagner (1777–1858) φ



J.92.20663 Junge Frau mit Lamm, pstl, 47x39 (Kemten, Allgäuer, 21.IV.2018, Lot 1529 repr., est. €100) φ



J.92.20664 Junge Frau mit Tauben, pstl/pchm, 48x38 (Kemten, Allgäuer, 21.IV.2018, Lot 1530 repr., est. €100; Berlin, Historia, 3–6.IV.2019, Lot 7040 repr., est. €1000; Berlin, Historia, 21–24.VIII.2019, Lot 7244 repr., est. €600) φ



J.92.20666 Lady in brown dress pstl/ppr, 29x23.6 ov. (Hannover, Kastern, 3.VII.2021, Lot 45 repr., est. €1400–2400) [cf. Bardou] φ

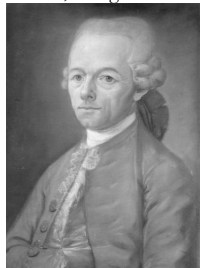


J.92.20668 Woman in a Tyrolean headdress, pstl, 56x42.5 (Sleepy Hollow, NY, Deker, 1.X.2023, Lot 27 repr., est. \$300–500, \$100; UK art market; Ripon, Elstob, 10.I.2024, Lot 643 repr., est. £300–500; Ripon, Elstob, 14.II.2024, Lot 688 repr., est. £100–150; Ripon, Elstob, 17.III.2024, Lot 174 repr., est. £70–100; Ripon, Elstob, 19.V.2024, Lot 257 repr., est. £40–60; Ripon, Elstob, 25.IX.2024, Lot 377 repr., est. £40–60) φ



Unknown pendant couples – museums

J.92.20685 Brustbild eines Mannes in 3/4 Ansicht nach links, graue Perücke, schwarze Zopfschleife. Graues Jackett, hellblaue Weste, Halstuch, Spitzenjabot; & pendant: pstl, c.1781/1800 (Berlin, Stadtmuseum, inv. XI 28957 b/a. Acqu. Hermann Buber, Potsdam, 1941; Kriegsvverlust. Lost Art-ID 484124) φ



Unknown pendant couples – order of appearance

J.92.2069 Man reading a letter; & pendant: J.92.207 woman sewing, pstl (Burkhardt, Eisenach, c.1915) φ



J.92.2073 Gentleman, in plum coat and white stock; & pendant: J.92.2074 lady, in a brown dress with bonnet, pstl, 30.5x20.3 ov. (London, Christie's South Kensington, 27.I.1999, Lot 829 repr., est. £600–800) φ

J.92.2076 Gentleman, in blue-green coat, red mantle; & pendant: J.92.2077 lady, in dark blue dress, pstl, 81.3x68 (New York, Sotheby's Arcade, 17.VII.1997 New York, Christie's, 3.XII.2002, Lot 63 repr., German sch., est. \$3–4000, \$1793). Lit.: Jeffares 2006, p. 607Biv/v, Éc. fr.) φ



J.92.208 Homme, pstl/ppr, 60.3x50.9; & pendant: J.92.2081 Femme, pstl/ppr, 60.3x50.9 (PC Hofenfels, Wiesbaden, 2003). German sch., ?Hessen, c.1800

J.92.2082 Herr; & pendant: J.92.2083 Dame, pstl/ppr, 37x30 ov. (Munich, Hampel, 18–19.III.2005, Lot 127 repr., German sch., end 18th century, €1400) φ



J.92.2086 Herr in Uniform; & pendant: J.92.2087 Dame mit blumengeschücktem Kleid, pstl, 43x32 (Karl Friedrich Boehm. Stuttgart, Nagel, 22.IX.2005, Lot 706 repr., est. €1800; Stuttgart, Nagel, 30.III.2006, Lot 524 repr., est. €900) φ

J.92.209 Herr in rüsting; & pendant: J.92.2091 Dame mit blauem Halsband, pstl/ppr, 45x33 (Vienna, Dorotheum, 17.X.2007, Lot 399 repr./n.r., Austrian sch., 18th century, est. €1500–1600) φ



1.92.2093 Herr; & pendant: 1.92.2094 Dame, pstl, 35x27 (Berlin, Reiner Dannenberg, 7.XII.2007, Lot 1341 repr., c.1800, est. €500) [cf. Lauer] φ



1.92.2097 Officer of the Württemberg army; & pendant: 1.92.2098 Dame, pstl, 60x50 ov. (PC 2015) [cf. Geiger] φ



1.92.2101 Man in a blue coat with fur collar; & pendant: 1.92.2102 lady in a black hat, pstl, 42x32 (Paris, Christie's, 6.X.2015, Lot 156/154 repr., est. €600–800) φ



1.92.21021 Elegante Herr; & pendant: 1.92.21022 Dame mit Federschmuck und Perlen im Haar, pstl/ppr, 69x50 (Vienna, Dorotheum, Hohenlohe sale, 2.III.2017, Lot 203 repr., est. €300–400) φ



1.92.21023 Man in a dark blue coat; & pendant: 1.92.21024 lady in a white dress, lace cap, blue-grey shawl, pstl, 34x28 (Bonn-Beuel, von Zengen, 17–18.III.2017, Lot 1784 repr., est. €700) φ



1.92.210241 Man in a brown coat, with red ribbon of an order; & pendant: 1.92.210242 lady in a blue dress, white fichu, pstl, 31x25 ov. (Galerie Gerstenberger, Chemnitz. Berlin, Galerie

Bassenge, 1.VI.2018, Lot 6580 repr., est. €1200) [cf. Bach; Schröder] φ



1.94.14995 Man in yellow coat; & pendant: 1.94.14996 lady with flowers on a table, pstl, 67x55 (Milan. Il Ponte, 28.III.2024, Lot 598 repr., est. €1200–1400) [cf. Betti; Pavona] φ



Unknown groups &c. – museums

1.92.2106 Zwei Thüringer Trachtenbilder, pstl/ppr, 52.5x43.5 (Gotha, Museum für Regionalgeschichte und Volkskunde, 2660)

1.92.2109 Lady in oriental costume with child holding a mask, pstl (Rome, Palazzo di Venezia). Style of Liotard φ



1.92.2111 Landscape with a stone foot-bridge across a mountain rivulet, pstl/pchm, 35x47 (Hermitage, inv. OP-11381. Acqu. 1800) φ



Ausbruch des Vesuvus am 7. März 1792, pstl, 19x30 (Vienna, KHM, GG-7647). Anon.

1.92.2114 Besuch eines Predigers; & pendant: 1.92.2115 Gesellschaft im Garten, pstl, 26.5x34, c.1760 (Weimar, SWKK, inv. KGe/00468/00469) [cf. Dutch sch.] φ



Unknown groups &c. – order of appearance

1.92.2119 Ein Seestück: ein scheiterndes Schiff, pstl (Caroline Luise, inv. p.m., 29–30.VI.1784, no. 130)

1.92.212 Ein Seestück: ein sinkendes Schiff, pstl (Caroline Luise, inv. p.m., 29–30.VI.1784, no. 131)

1.92.2121 Eine kleine Landschaft, pstl, 4eckigt (Caroline Luise, inv. p.m., 29–30.VI.1784, no. 402)

1.92.2122 1 angefangener Kind Kopf, pstl (Caroline Luise, inv. p.m., 29–30.VI.1784, no. 403)

1.92.2123 1 Blumen Stück, pstl/pchm (Caroline Luise, inv. p.m., 29–30.VI.1784, no. 408)

1.92.2124 Eine Rose, pstl/pchm (Caroline Luise, inv. p.m., 29–30.VI.1784, no. 409)

1.92.2125 1 gros Vich Stück, pstl/pchm, ebauchirt (Caroline Luise, inv. p.m., 29–30.VI.1784, no. 412)

1.92.2126 Gemahlter Kopf, pstl (Caroline Luise, inv. p.m., 29–30.VI.1784, no. 496)

1.92.2127 2 Rose, pstl (Caroline Luise, inv. p.m., 29–30.VI.1784, no. 510)

1.92.2128 Ein gros Blumen Stück, pstl (Caroline Luise, inv. p.m., 29–30.VI.1784, no. 512)

1.92.2129 Allerley Gemüser, pstl (Caroline Luise, inv. p.m., 29–30.VI.1784, no. 516)

1.92.213 Ein gros heiliges Gemälde mit Pfaffen; & pendant, pstl (Caroline Luise, inv. p.m., 29–30.VI.1784, no. 517/518)

1.92.2131 Ein gros Obst Stück, pstl (Caroline Luise, inv. p.m., 29–30.VI.1784, no. 520)

1.92.2132 Eine Landschaft, pstl (Caroline Luise, inv. p.m., 29–30.VI.1784, no. 521)

1.92.2133 Eine dito, pstl (Caroline Luise, inv. p.m., 29–30.VI.1784, no. 522)

1.92.2134 Eine weitere dito (Caroline Luise, inv. p.m., 29–30.VI.1784, no. 523)

1.92.2135 1 dito (Caroline Luise, inv. p.m., 29–30.VI.1784, no. 524)

1.92.2136 Ein Schwarz Künstler mit 1 Liebhaber, Pastell (Caroline Luise, inv. p.m., 29–30.VI.1784, no. 542)

1.92.2137 Ein Obst Stück, pstl (Caroline Luise, inv. p.m., 29–30.VI.1784, no. 543)

1.92.2138 Eine Landschaft mit Vieh, pstl (Caroline Luise, inv. p.m., 29–30.VI.1784, no. 549)

1.92.2139 Studie von Draperie, pstl (Caroline Luise, inv. p.m., 29–30.VI.1784, no. 551)

1.92.214 Studie von Draperie, pstl (Caroline Luise, inv. p.m., 29–30.VI.1784, no. 552)

1.92.2141 Ein Perruquen Stock mit einer Perruque, pstl (Caroline Luise, inv. p.m., 29–30.VI.1784, no. 559)

1.92.2142 Hahn, pstl (Caroline Luise, inv. p.m., 29–30.VI.1784, no. 561)

1.92.2143 Blumenstück mit einem Hammel, pstl (Caroline Luise, inv. p.m., 29–30.VI.1784, no. 562)

1.92.2144 9 Malereyen, pstl/pchm, in einem Pappendeckel Kistgen (Caroline Luise, inv. p.m., 29–30.VI.1784, no. 570)

1.92.2145 3 jungen Leuten, pstl (Caroline Luise, inv. p.m., 29–30.VI.1784, no. 584)

1.92.2146 2 Vues, pstl/bl. ppr (Caroline Luise, inv. p.m., 29–30.VI.1784, no. 594)

1.92.2147 2 Landschaften, pstl/pchm (Caroline Luise, inv. p.m., 29–30.VI.1784, no. 595)

1.92.2148 Eine Ungennanten, pstl, Berlin 1786, no. 294c. Anonymous exhibitor

1.92.2149 Zwei Brustbilder, pstl, Berlin 1788, no. 266. Anonymous exhibitor

1.92.215 Classical maidens by a tree, pstl, tondo, 62x62 (London, Bonhams, 9.IX.2003, Lot 299 repr., est. £500–800, manner of Kauffmann) φ



1.92.2152 Group of miniatures, pstl, 18 ht. (Munich, Hampel, 26–27.III.2004, Lot 1149 repr., est. €475) φ



J.92.2154 Still life with peaches, grapes and a melon, pstl, 31.3x42.4 (Royal Collection RCIN 452821) φ

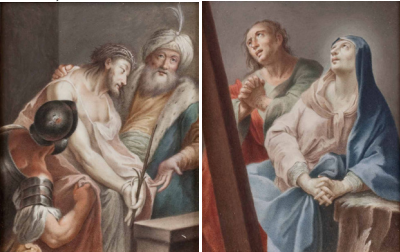
J.92.2156 Heiliger Hieronymus im Gehäus, pstl/ppr, 55.5x77 (Ahlden, Kunstauktionshaus Schloß Ahlden, 2.IX.2005, Lot 1274 repr., est. €900, German sch., 18th century) φ



J.92.2158 Familie in einer Landschaft, pstl/pchm, 78x60 (Vienna, Dorotheum, 14.XII.2005, Lot 234 repr., est. €500–800) φ



J.92.2162 Ecce Homo; & pendant: J.92.2163 Maria und Johannes beim Kreuz, pstl/ppr, 19.5x15.5 (Salzburg, Dorotheum, 30.III.2010, Lot 16 repr., Austrian sch., Tirol, c.1700, est. €1600–2000) φ



J.92.2166 Maria mit Jesuskind und Johannes, pstl, 62x49, sd x "CS" [?] (Kempten, Allgäuer Auktionshaus, 15–17.IV.2010, Lot 2357 repr., est. €1200) φ



J.92.2167 Familie in einer Landschaft, pstl/ppr, 87x98 (Berlin, Historia, 10–14.XI.2020, Lot 7003 repr., as English sch., est. €150) [??attr.; cf. Caffè] φv

