

Neil Jeffares, *Dictionary of pastellists before 1800*

Online edition

English, Irish and Scottish Schools

Anonymous sitters &c.

Unknown men – museums

J.85.1822 Man in a blue coat, pstl/ppr, 60.5x47.5 (Barnard Castle, Bowes Museum, inv. 1975.31.5/BM, as English sch.) [cf. Pond] Φ



Photo courtesy The Bowes Museum, County Durham

J.85.1825 Man in a blue coat, red waistcoat with gold braid; & pendant: J.85.1826 man in a brown coat, blue striped waistcoat, 24.2x20.8 ov. (Bath, Holburne Museum, inv. FB 830/831. Legs Frank Brown 2001) φσ



J.85.1829 Man, pstl, 64x49, labelled Liotard (Belvoir Castle). Lit.: R&L. s.no. 81, n.r., ??Liotard [=one of the items by Hamilton or Hoare in Musgrave's lists]

J.85.183 An officer, pstl/ppr, 61.3x51 ov., c.1740 (Dublin, NGI, inv. 6337. Don Milltown 1902). Exh.: Dublin 2023. Lit.: Le Harivel 1983, repr., Irish sch. [cf. Watson] φ



J.85.1832 Unknown captain of the Royal Navy in undress uniform of 1748–67, pstl/pchm, 51x42, [c.1755] (Greenwich, National Maritime Museum, inv. XXX 0676, as style of Knapton, 1750s) [cf. Vispré] φσ



J.85.1834 Unknown lieutenant of the Royal Navy, pstl, 29x23, s v illegibly [c.1785] (Greenwich, National Maritime Museum, inv. PAJ 3950) φσ



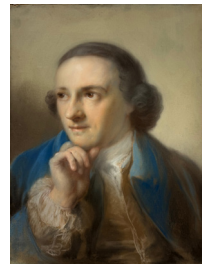
J.85.1836 Young man a wig, cr. clr, graphite/ppr, 29.3x20.3, 1669–90 (British Museum, inv. 1902.0822.12. Acqu. Colnaghi 1902). Lit.: “New acquisitions”, *Burlington magazine*, 1/1, .III.1903, p. 134, as by Lely; Croft-Murray & Hulton 1960, attr. Ashfield, no. 2 [??attr.] φ



J.85.1838 Gentleman in a wig, cr. clr/ppr, 28.3x20 ov., 1700 (British Museum, inv. SL.5214.263. Legs Sir Hans Sloane 1753). Lit.: Croft-Murray & Hulton 1960, p. 92, no. 1. Manner of Ashfield or Luttrell φ



J.85.1842 Man in blue coat, pstl, 55x40 (London, V&A, P.64-1962. Claude D. Rotch; legs 1962). Attr. Carriera [??; cf. Knapton; Frye; fits description of Skirving J.682.207] φσ



J.85.1844 An alchemist in a short orange gown blowing bellows into a still with an alembic, pstl, chlck/ppr (London, Wellcome Library) φ



Photo Wellcome Library, London

J.85.1847 Gentleman in a plum-coloured coat and black hat, pstl/ppr, ov. (Lytes Cary Manor, National Trust, inv 254687, as ?French) [?; English, c.1790] φ

J.85.1849 Young man in a blue coat, gold waistcoat, pstl, 59.7x44.4 (Mount Stewart, National Trust, inv. 1220356, as by Prince Hoare) [cf. Hoare] φ



J.85.1851 Gentleman, pstl, 33x26.4 (New Haven, Yale Center for British Art, inv. B1975.4.1333). Lit.: New Haven 1979, no. 123 n.r., *olim* attr. Luttrell; anon. 17th century

J.85.1852 Gentleman, pstl, gch., 28.6x23.5 (New Haven, Yale Center for British Art, inv. B1975.4.1334). Lit.: New Haven 1979, no. 124 n.r., *olim* attr. Luttrell; anon. 17th century

J.85.1853 Gentleman, pstl, watercolour, 35.5x23.8 (New Haven, Yale Center for British Art, inv. B1975.4.1166). Lit.: New Haven 1979, no. 126 n.r., anon. 17th century

J.85.1854 Gentleman in green coat with blue waistcoat, pstl, 59.7x44.5 (Syon House) [cf. Pond] φσ



- J.85.1856 Man in a brown coat, ?tutor at Tatton, pstl/ppr, 25x20 ov., c.1750 (Tatton Park, National Trust, inv. 1298356, TAT/D/195)
 J.85.1857 ~min. (Tatton Park, inv. TAT/P/227)
 J.85.1858 Head of an angel, bust-length, with long wavy hair, holding a book, pstl/ppr, 58.4x51 ov. (Tatton Park, National Trust, TAT/D/199)
 J.85.1859 Boy in a blue jacket and yellow waistcoat, pstl, 28.5x24 (Warwick Castle). English sch., c.1740

Unknown men – order of appearance

- J.85.1861 Man's head, crayons (Sir Thomas Sebright or Thomas Sclater Bacon; London, 19.V.1737, Lot 5)
 J.85.1862 Head of St Paul, crayons, Society of Artists 1762, no. 231, "a first attempt" by a gentleman
 J.85.1863 An officer, crayons, by a lady [honorary exhibitor], Royal Academy 1770, no. 218
 J.85.1864 An officer, crayons, by his daughter [honorary exhibitor], Royal Academy 1773, no. 329
 J.85.1865 A beggar, crayons, by a young lady, pupil to Mr Chubbard, Liverpool 1774, no. 20
 J.85.1866 Clergyman, crayons (David Garrick; inv. p.m., Hampton, room adjoining bedchamber, 1.III.1779, no. 23)
 J.85.1867 Young gentleman, crayons, by his sister [honorary exhibitor], Royal Academy 1784, no. 151
 J.85.18673 Peasant boy, crayons (London, Christie's, 7.XI.1788, Lot 16, 4s.; Philippe Joseph Tassaert)
 J.85.1868 Gentleman, crayons, by a young lady [honorary exhibitor], Royal Academy 1788, no. 409
 J.85.1869 An old man, crayons, Society of Artists 1791, no. 255, by a young lady
 J.85.18693 A general officer, crayons (Webb; London, John Gerard, 17.V.1792, Lot 44, 6s.; Richmond)
 J.85.18695 Boy, crayons (Anne, Duchess of Cumberland; London, Christie's, 25.II.1793, Lot 87 [part]; Dr Horton)
 J.85.18696 Man's head, crayons (William Watson; London, Christie's, 4.XII.1795, Lot 26)
 J.85.18697 A general officer, pstl/pchm, 56x43 (David Martin, portrait painter; sale p.m., Edinburgh, 4 St James's Square, William Bruce, 14.I.1799 & seq. [4.II.1799], Lot 690, unattributed, among Paintings by the first masters)
 J.85.187 Head of a boy, crayons (Campbell; London, Christie's, 23.VI.1827, Lot 148 part, with others a/r Stubbs, 12/-; Abrahams)
 J.85.18705 Boy, Georgian period, pstl (Ernest Sichel 1903). Exh.: London 1903, no. 271 n.r.
 J.85.1871 Man, head and shoulders, long powdered wig, black gown and bands, pstl, c.1710–20 (Maitland Mason, North End, Suffolk, 1904). Lit.: Farrer 1908, p. 129 n.r.
 J.85.1872 Gentleman in brown coat, pstl, 25x20 (Henry Lovatt, Low Hill, Bushbury, Staffordshire; London, Christie's, 30.XI.1907, Early English sch., 4½ gns; Tooth)
 J.85.1873 Officer, pstl, 26x22 (London, Christie's, 7.XII.1908, Lot 70, 5 gns; Renton)
 J.85.1874 Gentleman, pstl, 60x44.5 (London, Christie's, 12.XII.1908, Lot 52, 8 gns; Moir)
 J.85.1875 Gentleman in red coat, blue scarf, pstl, 56x43 (A. Smith, 1 Grafton Street, London, dealer; sale p.m., London, Christie's, 13.III.1911, Lot 12, £3; Louis)
 J.85.1876 Homme en habit bleu barbot, lisant, pstl, 65x53 (Pierre Decourcelle; Paris, Georges Petit, 29–30.V.1911, Lot 155 n.r., as by Russell, ff2450; Stern). Lit.: Vaudoyer 1911, p. 19 repr.;

Orange 2010, no. 41 repr., as by Russell [??attr.; cf. Humphry] φπ



- J.85.1877 Gentleman in blue uniform with gold braid, pstl, 48.5x44.5 (Sir Edward Coates; London, Sotheby's, 22.VI.1922, Lot 36 n.r., £35; Daniell)
 J.85.1878 Gentleman in blue coat and yellow breeches, seated in an arm chair, pstl, 24x21.5 (Sir Edward Coates; London, Sotheby's, 22.VI.1922, Lot 41 n.r., £12/10/-; Daniell)
 J.85.1879 Gentleman in blue coat, black breeches and white stockings, seated, holding a paper, pstl, 24x21.5 (Sir Edward Coates; London, Sotheby's, 22.VI.1922, Lot 42 n.r., £9; Joyce)
 J.85.188 Young man, seated by a window holding a book, pstl, 25.5x23 (Sir Edward Coates; London, Sotheby's, 22.VI.1922, Lot 43 n.r., £7/10/0; Joyce)
 J.85.1881 Gentleman in blue uniform with red facings, pstl/ppr 25x20 ov. (Émile Gross; Xavier Haas; New York, Anderson, 13–14.I.1927, Lot 116 repr., as by H. D. Hamilton) [??] φ



- J.85.1882 Man in scarlet uniform, dark blue revers, gold bars in two sets of three, gold epaulettes, aged 40–50, facing, grey eyes full, powdered hair with three rolls over ears, pstl, 25x20 ov. (Quidenham Hall 1928). Lit.: Duleep Singh 1928, II, p. 163, no. 68 n.r.
 J.85.18824 ?Architect in buff coat, brown and red waistcoat, pstl, 51x41 (A. N. L. Munby, Cambridge, 1952). Lit.: *Country life*, 27.VI.1952, p. 1993 repr., ?Continental φ



- J.85.1883 Young man, pstl (desc.: Earl Fitzwilliam, Milton Hall, Peterborough, 1978). Lit.: L&R s.no. 185; R&L p. 452 n.r., English sch., style of Carriera
 J.85.1884 Gentleman, pstl, 22x16.5 ov. (Elizabeth Bryant Johnson. W. S. Worden. Edith Kane Baker, New York; New York, Parke-Bernet, 28–29.X.1977, Lot 254. New York, Sotheby's, 6.XII.1980, Lot 115 repr., Éc. fr.) φ



- J.85.18805 [olim J.64.32437] Gentleman, in pink coat, yellow vest, white stock, pstl, 46x35.5 ov. (London, Christie's, 25.VII.1924, Lot 28 n.r., as by Russell, b/i) [??attr.; cf. Huquier] φ



- J.85.1886 Gentleman in a brown coat, pstl, 27x19 (London, Sotheby's, 30.III.1983, Lot 95 repr., English sch., c.1740, b/i) φ



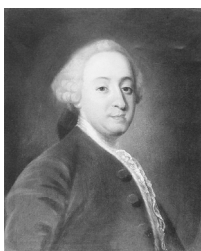
- J.85.1887 Gentleman, pstl, 27x19.5 (Sir Brice Ingram. London, Sotheby's, 30.III.1983, Lot 96 repr., circle of Luttrell) [cf. Armstrong] φ



- J.85.1888 Man, m/u (Vienna, Dorotheum, 14.XI.1990, sch. of Gainsborough) φ



- J.85.189 Male figure in 18th century costume, bust length, cr. clr/bl. ppr, 29x22.2, c.1700 (Reitlinger a.1991)
 J.85.1891 Gentleman, half-length, in a red cloak, in painted ov., pstl, 28.5x23 (Dudley Snelgrove, FSA; London, Sotheby's, 19.XI.1992, Lot 167 n.r., English sch., early 18th century, est. £300–500, £100 [=£110])
 J.85.1896 Gentleman in blue coat, pstl, 59.7x50.2 (London, Christie's South Kensington, 30.I.1997, Lot 228 repr., circle of Gardner, est. £500–800) φ



J.85.1898 Boy with a dog; & pendant: J.85.1899 twin brother, pstl/ppr, 64x48 (London, Phillips, 14.VII.1998, Lot 16 repr./n.r., attr. Gardner, est. £2–3000, £1500) [cf. Russell] φ



J.85.1901 Cleric, in a powdered wig, white clerical collar and black robe, pstl, 58.4x45.7 (Richard C. von Hess; New York, Sotheby's, 16.VI.1998, Lot 155 n.r., English sch., 18th century, est. £500–700, £402)

J.85.1902 Gentleman, half-length in brown coat in a landscape, pstl, 38.2x29.3 (Lady Weiss, The Manor House, Little Marlow; London, Christie's South Kensington, 15.IX.1998, Lot 306 n.r., follower of H. D. Hamilton, est. £300–400)

J.85.1903 Child holding a rattle, wearing dress of c.1600, pstl, 42.5x33 (PC). 18th c. cop. a/r 17th c. picture φ

J.85.1904 Gentleman, pstl, 33x25.4 ov. (Cheltenham, Mallam's, 3.XII.1999, Lot 76 repr., est. £300–500) [cf. Lawrence] φ

J.85.1906 Boy, pstl, 33.7x29 ov. (London, Bonhams Chelsea, 25.I.2000, Lot 18 repr., manner of Gainsborough, est. £300–300, b/i) φ

J.85.1908 Man, pstl, c.1800 (London, Sotheby's, 11.IV.2002, Lot 10 n.r., £2300 with two pnts.)

J.85.1909 Boy with a gun, pstl, 58.5x43 (London, Sotheby's Olympia, 17.VII.2002, Lot 2 repr., est. £600–800, £1527) [Pcf. Read] φ



Photo courtesy Sotheby's

J.85.1912 Gentleman in a blue coat, pstl, 61x51 (London, Sotheby's Olympia, 2.VII.2003, Lot 166 n.r., part.) φ



J.85.1914 Boy in a blue coat, pstl, 24x19 ov. (London, Sotheby's Olympia, 2.VII.2003, Lot 293 repr., as circle of Hamilton; with another pstl, manner of Vigée Le Brun) φ



Photo courtesy Sotheby's

J.85.1917 Man in a brown coat, pstl, 59x43.5 (Crewkerne, Somerset, Lawrences, 24–25.VII.2003, Lot 827, circle of Hoare, £290. Tony Haynes Fine Art, Broadway; Prinknash Abbey, Chorley's, 19.V.2011, Lot 247 repr., est. £250–350; Prinknash Abbey, Chorley's, 28.VII.2011, Lot 530 repr., attr. Hoare, est. £250–350; Battle, Burstow & Hewett, 30.V.2012, Lot 292 repr., attr. Hoare, est. £300–500) [cf. Vanderbank] φ



Reproduced by kind permission of Lawrences Fine Art Auctioneers Ltd, Crewkerne

J.85.192 Gentleman with a lyre, pstl, 68x57.5 (London, Bonhams, 25.XI.2003, Lot 214 repr., attr. Russell Skinner) φ



J.85.1922 Young boy in blue coat, flourishing a whip, pstl, 48x38.5 (Johannesburg, Sotheby's, 17.V.1999, Lot 186 repr., manner of Russell, est. Rd7–9000. London, Sotheby's Olympia, 21.I.2004, Lot 34 repr., est. £600–800, £600, English sch. Derby, Bamfords, 26–29.VI.2012, Lot 1582 repr., as by John Russell, est. £600–800; Birmingham, Biddle & Webb, 7.IX.2012, Lot 235 repr., as by J. Russell, est. £600–800) φ



Photo courtesy Sotheby's

J.85.1925 Boy with birdcage, pstl, 48x38 (London, Sotheby's Olympia, 21.I.2004, Lot 102 repr., est. £300–500, £1440, English sch.) [cf. Read] φ



Photo courtesy Sotheby's

J.85.1928 Boy, pstl/ppr, 42x32 (Munich, Hampel, 24–25.IX.2004, Lot 69 repr., circle of Gainsborough, est. €850) φ



J.85.193 Clergyman, pstl, 30.5x25.5 (Lewes, Gorrings, 30.XI.–2.XII.2004, Lot 2925 repr., est. £120–150) φ



Photo courtesy Gorrings

J.85.1933 Man in a brown coat, pstl, 24x19 ov. (Lewes, Gorrings, 8–10.III.2005, Lot 1972 repr., est. £50–70) [cf. Vaslet] φ



Photo courtesy Gorrings

J.85.1936 Man in a blue coat, pstl, 24x19 ov. (Lewes, Gorrings, 29.XI.–1.XII.2005, Lot 2504 repr., est. £200–300) φ



Photo courtesy Gorrings

J.85.1939 Young boy, in blue coat, holding dog, pstl, 59x46 ov. (London, Bonhams Knightsbridge, 10.I.2006, Lot 274 repr., est. £600–800; Oxford, Bonhams, 20.VI.2006, Lot 17 n.r., late 18th century, est. £500–700) [cf. Russell] φ



J.85.1941 Man in brown coat; J.85.1942 man in grey coat; J.85.1943 clergyman, pstl, 23x18 (Ipswich, Bonhams, 8–9.III.2006, Lot 316 repr., circle of Hamilton, with one lady, £799) [circle of Sharples] φ



J.85.1951 Boy in brown coat and blue waistcoat, pstl, 33x26 (Leominster, Brightwells, 11.X.2006, Lot 647 repr., est. £200–300) φ



J.85.1966 Gentleman in grey coat, pstl, 56x48 (Haslemere, John Nicholson, 12–13.XII.2007, Lot 1199 repr., est. £500–1000; 17.II.2010, Lot 1061, est. £200–300) φ



J.85.1945 Gentleman in a brown coat, pstl, 44.5x33.6, inscr. “JR 1783” (London, Christie’s, 11.IV.1967, Lot 97, as John Russell. Leominster, Brightwells, 14.VI.2006, Lot 498 repr., circle of Russell, est. £150–250. M. M. Holloway, printseller, London. Carlisle, Thomson Roddick & Medcalf, 25.VIII.2016, Lot 12 repr., as by John Russell, sd JR 1786, est. £200–300; 25.XI.2016, Lot 231. Liverpool, Adam Partridge, 1–2.XI.2023, Lot 562 repr., as by Russell, est. £80–120) [?attr.] φ



J.85.1953 Boy in blue coat and waistcoat, pstl, 25.4x20.3 ov., inscr. *verso* (Castlecomer, Mealy’s, 21.XI.2006, Lot 1106 repr., attr. Hugh Douglas Hamilton, est. €800–1200, €2900) [?attr.] φ



J.85.1968 Man in green coat, pstl, 25.4x19 ov. (London, Christie’s South Kensington, 11.III.2008, Lot 100 repr., circle of Gardner, est. £300–400) [cf. German sch.] φ



J.85.1955 Man in a grey coat, pstl, 37.5x29.5; & man in cleric’s robes (Crewkerne, Somerset, Lawrences, 18–19.I.2007, Lot 1277 repr./n.r., English sch., c.1730–50, est. £150–250) φ



J.85.197 Gentleman in brown coat, pstl, 55x45 ov. (London, Christie’s South Kensington, 20.IV.2008, Lot 186 repr., circle of Gardner, with lady n.r., est. £400–600, £1063) φ



J.85.1947 Middle eastern Turkish man, pstl, 51x43 ov. (Exeter, Bearne’s, 7.XI.2006, Lot 451 repr., style of Wright of Derby, est. £500–700, £5100) φ



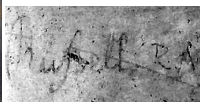
J.85.1957 Gentleman in a blue coat, pstl/ppr, 58.5x46, inscr. ← “J Russel RA/1793” (London, Bonhams, 25.VI.2002, Lot 112 repr., as by Russell, est. £1000–1500, b/i; London, Bonhams, 29.I.2007, Lot 682 repr., est. £800–1200, £960) [?attr.; ?later] φπ



J.85.1972 Gentleman in a red coat, pstl (English art market 2008). Traditional attr. Prince Hoare [??] φ



J.85.1949 Man in a blue coat, pstl, 19x14 ov. (Newbury, Donnington Priory, Dreweatt Neate, 27.IX.2006, Lot 43 repr., manner of Gardner, est. £400–600) φ



J.85.1962 Gentleman in blue coat, feigned oval, pstl, 42x33 (London, Christie’s South Kensington, 29.VII.2007, Lot 140 repr., circle of Gardner, est. £300–500) φ



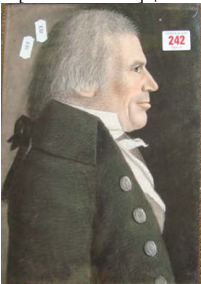
J.85.1976 Man in a brown coat, red waistcoat trimmed with gold, pstl, 60x45, in Kent frame (Genoa, Boetto, 1.XII.2008, Lot 130 repr., modi di Carriera, est. €1300–1500) [cf. Hoare] φ



J.85.1978 Boy in a blue coat with white lace collar, pstl, 24.5x20.3 (London, Christie's South Kensington, 27.I.2009, Lot 197 repr., with another item, est. £600–800, £1125) [cf. Russell] φ



J.85.198 Man in a black coat in profile, pstl, 31x22 (Chichester, Stride, 27.II.2009, Lot 242 repr.) [cf. Dutch sch.] φ



J.85.1984 Gentleman in a blue coat, pstl, 25x20 ov. (Nottingham, Mellors & Kirk, 1–2.V.2008, Lot 782 repr., est. £100–200; Birmingham, Biddle & Webb, 3.VII.2009, Lot 171 repr., est. £150–200) φ



J.85.1988 Gentleman in a blue coat, red striped waistcoat, pstl, 23x17 ov. (Bury St Edmunds, The Athenæum, Bonhams 14.VII.2010, Lot 381 repr., attr. J. R. Smith, est. £600–800, £500 [=£600]; PC) φ



J.85.1992 Man in a green turban, grey cloak over red coat trimmed with gold braid, pstl/ppr, 53.3x43.2, c.1730 (Dr Tony Ryan, Lyons House; London, Christie's, 14.VII.2011, Lot 97 repr., est. £2–3,000, £1750) [cf. Beare] φσ



J.85.1994 Gentleman in a ruff, pstl, 57.5x41.5 (Oxford, Bonhams, 8.VI.2011, Lot 213, English sch., 18th century, est. £600–800; Oxford, Bonhams, 23.VII.2011, Lot 310 repr., est. £300–400) [a/r old master portrait] φ



J.85.1996 Gentleman in a blue coat, pstl/ppr, 60x47, c.1755 (Duarte Pinto Coelho, decorator, Madrid and Trujillo; London, Christie's South Kensington, 20–21.VII.2011, Lot 487 repr., circle of Hoare, est. £1200–1800) φσ



J.85.1998 Man in a brown coat, pstl, 35x26 (Lichfield, Richard Winterton, 1.XII.2011, Lot 367 repr., anon., est. £80–100) [cf. Saunders] φ



J.85.2001 Man in a blue coat, pstl, 45x32 ov. (Castlecomer, Mealy's, 7.XII.2011, Lot 1231 repr., est. €500–800; Castlecomer, Mealy's, 21–22.X.2014, Lot 762 repr., est. €500–700, €400) φ



J.85.2004 Man in a blue coat, pstl, 19x15 ov. (Birmingham, Biddle & Webb, 2.III.2012, Lot 234 repr., as 19th century, est. £70–100) φ



J.85.2006 Man in a black coat, striped waistcoat; & pendant: J.85.2007 man in dark blue coat, striped waistcoat, pstl, 26x20 ov. (Castlecomer, Mealy's, 3–4.III.2012, Lot 1240 repr., attr. H. D. Hamilton, est. £3500–4500) φ



J.85.201 Young man in blue coat, pstl [c.1760] (PC 2012) [cf. Frye] φ



J.85.2012 Man in blue coat, pstl [c.1750] (PC 2012) [cf. Pond] φ

J.85.2014 Little boy seated, pstl [c.1750] (PC 2012) [cf. Hoare] φ

J.85.2016 Man in a blue coat, red collar, pstl/pchm, 21x18 ov. (Lincoln, Golding Young & Thos. Mawer, 19.IX.2012, Lot 28 repr., est. £80–120) [?German sch.] φ



J.85.2018 Young man in a grey coat, pstl/br. ppr, 22.5x19 (PC 2012) φ



J.85.202 Boy in a red coat, pstl/ppr, 23x20 ov. (English PC; Miles Barton c.2013) φ



J.85.2022 Officers of the ?Royal Engineers, 2 pstls, 18x13.5 ov. (Mary Holln... [illegible inscription], Citadel, 1850; Slane Castle, Adam's, 9.X.2012, Lot 118/119 repr., as naval officer, by Hugh Douglas Hamilton, each est. €1500–2000, b/i; Dublin, Adam's, 18.XI.2012, Lot 93/92 repr., attr. Alexander Pope, each est. €1000–1500) [?attr.] φ



J.85.2025 Man in a blue coat, red waistcoat, gold braid, pstl/ppr, 60.5x46, [c.1745] (Vokins, framers and dealers; London, Christie's, 23.VII.1880; Rushton. PC 2013; Durrow, Co. Laois, Sheppards, 8–10.VII.2014, Lot 1211 repr., attr. Hoare, est. €2–3000) φσ



J.85.2035 Man in a blue coat, standing beside a column, pstl/ppr, 32x27 ov. (Bridport, Busby, 20.XI.2014, Lot 292 repr., est. £200–300, b/i) [cf. Lawrence] φ



J.85.20431 Officer of the First Foot regiment, pstl/ppr, 65x43 (Malvern, Philip Serrell, 14.VII.2016, Lot 208 repr., circle of Cotes, est. £500–750) φ



J.85.2027 Gentleman in brown coat, red cloak, pstl/ppr, 62x53 (New York, Doyle, 24.X.2007, Lot 1012 repr., English sch., early 18th century, est. €1500–2500; PC 2013; New York, Doyle, 26.X.2016, Lot 75 repr., as by Arthur Pond, of Thomas Robinson, Lord Grantham, est. \$800–1200, \$562) [cf. Frye; Pond] φ



J.85.2037 Man in a red coat, yellow waistcoat, pstl, 53x38 (PC 2015; Epping, Bonnington's, 15.VII.2015, Lot 264 repr., circle of Perronneau, est. £150–250) [English sch., c. 1760] φ



J.85.20433 Man in a blue coat, pstl/ppr, 65x43 (Durrow, Sheppard's, 1.XII.2016, Lot 1532 repr., as by Hugh Douglas Hamilton, est. €800–1200) [??attr.] φν



J.85.2029 Cleric, pstl/ppr, 28.5x23.5 (Cerne, near Cirencester, Dominic Winter, 5–6.II.2014, Lot 93 repr., with another n.r., est. £200–300; Cirencester, Dominic Winter, 9.X.2014, Lot 217 repr., est. £150–200) [cf. Luttrell, ?; ?same hand as Chicago "Luttrell" J.506.321] φ



J.85.2039 Gentleman in a green coat with black collar, pstl, 24x19 ov. (Dublin, Adam's, 8.III.2015, Lot 293 repr., style of H. D. Hamilton, est. £400–600; Dublin, Adam's, 20.IX.2015, Lot 101 repr., style of H. D. Hamilton, Robert Emmet, according to modern inscr. est. €300–500) [cf. George Lawrence] [emm Philip Harvey 19.ix.2015] φ



J.85.20434 Man in a reddish-brown coat, pstl/ppr, 55x42 (Dr Mohammed Said Farsi. Sherborne, Charterhouse, 20–21.IV.2017, Lot 256 repr., est. £200–400, £3600. London, Sotheby's, 3.VII.2019, Lot 347 repr., English sch., est. £5–7000) [?pastiche a/r Liotard] φπσ



J.85.2031 Man in a reddish-brown coat, profile, pstl, 25x19 (Knutsford, Frank Marshall, 25–26.III.2014, Lot 557 repr., est. £100–150) [cf. Towne] φ



J.85.2041 Man in a brown coat, yellow waistcoat with silver embroidery, pstl, 44x31 (London, Chiswick Auctions, 8.XII.2015, Lot 28 repr., ?Smollett, est. £300–500) φ



J.85.20435 Man in a brown coat, in landscape. Leaning against a pedestal, pstl, 24x19 ov. (Sharrington Antiques, Norfolk; PC; Aylsham, Norwich, Keys, 18–20.VII.2017, Lot 1572 repr., as by Hugh Douglas Hamilton, est. £300–400, withdrawn) [?attr.] φν



J.85.2033 Man in a blue coat, profile, pstl, 48x34 ov. (Rankine Taylor; Edinburgh, Lyon & Turnbull, 24.VI.2014, Lot 228 repr., est. £400–600) φ



J.85.2043 Man in red waistcoat, cr. clr/ppr, 24.7x19 (PC 2016;) [cf. follower of Lely] φ



J.85.20436 Officer in uniform, pstl/ppr, 23x19 ov. (Wisborough Green, Bellman's, 5–7.IX.2017, Lot 1572 repr., as by Hugh Douglas Hamilton, est. £300–400, withdrawn) [?attr.] φν

Lot 898 repr., as circle of Hugh Douglas Hamilton, est. £200–300) [??attr.] φδ



J.85.20437 Man in a blue coat, pstl (PC 2017) [cf. Knapton] φ

J.85.20438 Man in a brown coat, pstl (PC 2017) [cf. Cotes] φ

J.85.20439 Man in a brown coat, pstl, 56x44.5 (PC 2017) φ

J.85.2044 Man in a brown coat, pstl, 54.5x44.5 (Lewes, Gorrings, 27.XI.2017, Lot 1471 repr., est. £300–500) φ



J.85.204401 Young man in a blue coat, red cloak, pstl/ppr, 27.9x20.3, c.1710 (Price & Isobel H. Glover; sale p.m., New York, Sotheby's, 18–21.I.2018, Lot 594 repr., est. \$700–1000) [cf. Luttrell] φ



J.85.204402 Young man in a blue coat, yellow waistcoat, pstl/ppr, 27.9x20.3, c.1730 (Price & Isobel H. Glover; sale p.m., New York, Sotheby's, 18–21.I.2018, Lot 595 repr., est. \$700–1000) φ



J.85.204404 Man in a grey coat, pstl, 25.5x20.5 ov. (Stockport, Capes Dunn, 24.VII.2018, Lot 274 repr., est. £100–150; Stockport, Capes Dunn, 16.VII.2018, Lot 365 repr., est. £100–150) φ



J.85.204405 Boy in a red uniform, blue facings, pstl, 25x20 ov. (Winchester, Bellmans, 19–20.IX.2018, Lot 916 repr., follower of Hugh Douglas Hamilton, est. £300–500) φ



J.85.204406 Young man in grey coat, red and gold mantle, pstl, 28.5x22 (Haslemere, John Nicholson's, 2.X.2019, anon., Lot 248 repr., attr. Henrietta Johnson, est. £1000–1500) [??attr.; cf. Luttrell] φ



J.85.204408 Young man in grey coat, pstl, 23.5x19.5 ov. (Oxford, Mallams, 25.VI.2020, Lot 147 repr., attr. H. D. Hamilton, £600–800) [??attr.] φ



J.85.20441 Young boy in silver costume, playing a triangle, pstl, 31x26 ov. (Daniel Egan, Dublin, Adam's, 23.VIII.2020, Lot 278 repr., Irish sch., est. €300–400) φ



J.85.20442 Man in a blue coat, white waistcoat, pstl/ppr, 25x19.4 ov., label verso Tucker, carver and gilder, of Exeter (US PC 2020) φ



J.85.20443 Man in a reddish coat, pstl, 60x50 (Dublin, Adams, 13.X.2020, Lot 508 repr., as French sch., est. €2–3000) [?attr.; cf. Hogarth] φ



J.85.20444 Man in a puce coat with silver lace, pstl/ppr, 60x45 (Dorchester, Dukes, 24.II.2021, Lot 287 repr., as circle of Hoare, est. £500–1000) [cf. Cotes] φ



J.85.20445 Man in a brown coat, pstl, 60.8x56.7 (London, Bonhams, 15.IV.2021, Lot 222 repr., attr. John Russell, est. £1000–1500; London, Bonhams, 26.X.2021, Lot 239 repr., attr. John Russell, est. £600–800) [??attr.] φπν



J.85.20446 Young man in a black coat, seated at an inclined lectern with a large book, pstl, 25x20.2 (Salisbury, Woolley & Wallis, 11–12.VIII.2021, Lot 111 repr., est. £300–500) φ



J.85.20448 Young man in blue uniform with red collar, embroidered edging, pstl, 54.5x44.5 (Corsham, Gardiner Houlgate, 11.V.2023, Lot 428 repr., est. £80–120) φ



J.85.20449 Young boy in red coat with a hat, pstl, 20x17 (Bath, Aldridge's, 30.V.2023, Lot 272 repr., est. £200–300, £2500)φ



J.85.2045 Boy in blue coat and gold braided waistcoat, pstl/ppr, 49.5x44.5, c.1740–50 (Arthur Brown Wilson. Wilkins & Wilkins, London, 1997. London, Christie's South Kensington, 30.I.1997, Lot 227 repr., circle of Hoare, est. £500–800. Ryman & Co. London Charles Fleischmann; Cincinnati, Hindman, 17.XI.2023, Lot 467 repr., est. \$300–400, \$450) [old note records Sir Oliver Millar's view in 1866 attr. Mary Hoare or Katherine Read; ??; cf. Hone] φ



J.85.20451 Boy in blue coat, pstl/ppr, 24x18 ov. (Ellis & Smith, printsellers, Grafton Street, London. Sir William H. Bennett; sale p.m., New York, Anderson Galleries, American Art Association, 29–30.IV.1932. Charles Fleischmann; Cincinnati, Hindman, 17.XI.2023, Lot 478 repr., est. \$300–400, \$650) φ



J.85.20452 Boy in blue coat, his hand on a book, pstl/ppr, 48.3x38.1 (Los Angeles, Abell, 11.I.2024, Lot 686 repr., as English sch., est. \$200–300) φ



J.85.20453 Man in grey coat, blue waistcoat, seated at a table, pstl/ppr, 39x32 ov. (Canterbury

Auctions, 4–7.X.2024, Lot 329 repr., as English sch., est. £150–200) [?attr.; cf. German or Dutch]φ



J.85.20454 Man in russet coat, pstl/ppr, 54x44 ov. (Donnington, Dreweatts, 12.XII.2024, Lot 133 repr., ??David Hume, est. £300–500) [cf. Gardner or George Lawrence]φ



J.85.20455 Man in brown coat, profile, pstl/ppr, 23.5x19.5 ov., inscr. verso 1784 (Boydell Galleries, Liverpool. Leyburn, Tennants, 11.I.2025, Lot 538 repr., as follower of Highmore, with another, est. £100–150) φ



J.85.204551 Man in red coat, pstl/ppr, 30.4x25.4 ov. (Guy Peppiatt Fine Art, cat. 2025, no. 64) φ



J.85.204552 Man in red mantle; man in grey coat; boy in brown coat, pstl/ppr, 24.5x20/27.5x22, d "Aetat suo 76 1698"/ "Etat 54 1717"/ "Etat ? 1718" (Donnington Park, Dreweatts, 7–8.V.2025, Lot 399 repr., as French sch., est. £600–800) [?; English, cf. Luttrell] φ



Unknown women – museums

J.85.2046 Lady in a pale blue dress with orange bodice, wearing a garland of flowers, pstl (Audley End, English Heritage, inv. 81031125)

J.85.2047 Woman, pstl, 61x51 (Bath, Victoria Art Gallery, attr. La Tour. Don Walter Barratt, FLS, 1934) [cf. Hutchison] φσ



Photo © Bath and North East Somerset Council

J.85.205 Lady in white dress, black shawl, pstl, c.28x24 ov. (Bath Preservation Trust, No. 1 Royal Crescent) [cf. Sharples] φσ



J.85.2052 Girl asleep, pstl, 49.5x59.5, c.1790 (Buscot Park, The Faringdon Collection, cat. 19. Christie's, 1966; Leonard Huskisson, Faringdon). *Olim* attr. Gardner φ



Photo courtesy The Faringdon Collection

J.85.2055 Elderly lady, bust, pstl, gch./ppr, 37.3x27.5 (Cambridge, Fitzwilliam Museum, inv. PD. 111-1991. Legs Henry Scipio Reitlinger 1991), *olim* attr. Daniel Gardner)

J.85.2056 Woman, pstl/ppr, 41.2x34.2 (Cambridge, Fitzwilliam Museum, inv. PD.753-1963, as by Vaillant. Legs Sir Bruce Ingram 1963) [?attr.] φ



J.85.2058 Young girl, pstl/ppr, 24.3x19.8 (Cambridge, Fitzwilliam Museum, inv. PD.119-1964, ?18th century copy a/r ?Flemish 17th century work. P. & D. Colnaghi; Sir Bruce Ingram; London, Sotheby's, 1.XII.1964, Lot 80, withdrawn; legs 1963/acqu. 1964) [cf. Dusart] φ



J.85.206 Lady, pstl (Clandon Park, National Trust, CLA/P/98, inv. 1441527; lost in fire of 2015). English sch. [c.1740–50] Φ



J.85.2064 A widow, pstl, c.1670 (Croft Castle, National Trust, CRO/P/36). English sch. Φ



J.85.2067 Girl with yellow cloak, pstl/ppr, 24.7x19.1 (London, Tate, inv. T08260. Oppé collection; acqu. 1996). British sch., 17th century φπ



J.85.2069 Young woman, pstl/ppr, 24.8x18.7 (London, V&A, 510-1892). Lit.: Lambourne & Hamilton 1980, repr., as style of Michael Dahlφσ



J.85.2071 Lady with dark hair, pstl, gch./ppr, 29.0x23.4 (New Haven, Yale Center for British Art, inv. B1975.4.1335). Lit.: New Haven 1979, no. 125 n.r., *olim* attr. Luttrell; anon. 17th century φ

J.85.2073 Girl in a straw bonnet, head and shoulders, pstl/ppr, 31.2x25.6 (National Trust, Mompesson House, Wiltshire, inv. 724308; *olim* Stourhead, inv. 730867, STO/D/484), mid-18th century English sch. [?cf. *Éc. fr.*, c.1800] Φ



Photo courtesy National Trust

J.85.2076 Girl in a mob cap, head and shoulders, pstl, 31.2x25.6 (National Trust, Mompesson House, Wiltshire, inv. 724309; *olim* Stourhead, inv. 731144, STO/D/483), mid-18th century English sch. [?cf. *Éc. fr.*, ?a/r Greuze, c.1760] Φ



Photo courtesy National Trust

J.85.2081 Girl, pstl (Weston Park, Earl of Bradford, as Liotard). Lit.: R&L R65 n.r.

Unknown women – order of appearance

J.85.2083 Salutation of the Virgin, in crayons (London, Batson's Coffee House, Cornhill, 7.XII.1691, Lot 801)

J.85.2084 Lady's head, crayons (Leonard Wooddeson, Clerk of Works and Storekeeper at Greenwich Palace; sale p.m., London, Aaron Lambe, 8.III.1733 & seq., 10th day, 19.III.1733, Lot 89)

J.85.20845 A woman's head, pstl (Montagu House, inv. 1746). Lit.: Tessa Murdoch, *Noble households*, 2006, p. 99 n.r. [cf. Lady Cardigan]

J.85.2085 Vestale, portant un crible rempli d'eau pour preuve de sa virginité (Mme Viguier 1752). Exh.: Toulouse 1752, no. 92, English sch.

J.85.2086 A Magdalen, crayons, Society of Artists 1763, no. 203, by a lady

J.85.2087 A Madona, crayons, Society of Artists 1769, no. 337, by a lady

J.85.2088 Young lady, crayons, by a lady [honorary exhibitor], Royal Academy 1769, no. 130

J.85.2089 Old lady, crayons, Free Society 1772, no. 101, by a lady, pupil to William Burgess

J.85.209 Lady, crayons, by a lady [honorary exhibitor], Royal Academy 1772, no. 305

J.85.2091 A country girl with fruit, crayons, by a lady [honorary exhibitor], Society of Artists 1773, no. 445

J.85.2092 Lady, crayons, by her sister [honorary exhibitor], Royal Academy 1774, no. 327

J.85.2093 Lady, crayons, Society of Artists 1775, no. 335, by a lady

J.85.2094 Portrait in the character of the Muse Erato, crayons, Society of Artists 1775, no. 369, by a lady

J.85.2095 Flora, crayons, by a lady, Royal Academy 1776, no. 356

J.85.2096 Two most beautiful heads of women, in crayons, much to the honor of the fair performer, a lady of the present generation (Fawsley House). Lit.: Thomas Pennant, *The journey from Chester to London*, 1782, p. 296 [cf. member of the Knightley family, ?Lady Knightley, née Mary Baines (–1830), ∞ 1779 Sir John Knightley, Bt, or her sister-in-law, Mrs Charles Knightley, née Elizabeth Boulton)

J.85.20961 Two ladies in crayons (Philip Stanhope, 5th Earl of Chesterfield; London, Christie's, 30.IV.1782, Lot 190, 3 gns; Woodward)

J.85.20962 Six ladies at various amusements, crayons (Lodovico Carlo Maria Barbiano di Belgiojoso; London, Christie's, 27.XI.1782, Lot 25)

J.85.20963 Four ladies, polite amusements, crayons (Lodovico Carlo Maria Barbiano di Belgiojoso; London, Christie's, 27.XI.1782, Lot 40)

J.85.20964 Lady, crayons (London, Christie's, 23.I.1784, Lot 3)

J.85.20965 Lady, crayons (London, Christie's, 23.I.1784, Lot 4)

J.85.20966 Lady, crayons (London, Christie's, 11.XI.1784, Lot 30, £1/5/-; Skirrow)

J.85.2097 Lady, crayons, by a lady [honorary exhibitor], Royal Academy 1784, no. 371

J.85.20971 Lady, crayons (Bartholomew Price; East Challow, Oxfordshire, James Lucas, 20.IX.1786, Lot 110)

J.85.20972 Two portraits of ladies, crayons, ov. (London, Greenwood, 12.XII.1788, Lot 27)

J.85.20973 Lady, crayons (London, Christie's, 19.III.1789, Lot 25 [part], £1/3/-; Gray)

J.85.20974 Young lady and dog, crayons (London, Greenwood, 28.V.1789, Lot 10)

J.85.20975 Woman plucking a duck; & pendant, crayons (London, Greenwood, 28.V.1789, Lot 11)

J.85.20976 Ladies, crayons (Thomas Fullwood; London, Christie's, 12.IV.1791, Lot 64 [part], £2/12/-; Duncannon)

J.85.20977 Two heads of ladies, crayons, ov. (Roberts; London, Christie's, 17.VI.1791, Lot 31)

J.85.20978 Lady, crayons (London, Hutchins, 10.XII.1791, Lot 79)

J.85.20979 St Cecilia, crayons (Thomas Watson (–1791); sale p.m., London, Hutchins, 24.I.1792, Lot 71)

J.85.2098 Lady, crayons (General John Burgoyne; London, Christie's, 22.XII.1792, Lot 3, £3/1/-; Skirrow)

J.85.20981 Two female heads, crayons (George Marshall; London, Thomas King, 13.V.1794, Lot 33)

J.85.20982 Lady, crayons (Lord Ravensworth; London, Christie's, 4.XII.1795, Lot 3, 1 gn; McKenzie)

J.85.20983 Lady's head, crayons (Field Marshal Henry Seymour Conway; London, Christie's, 11.XII.1795, Lot 57 [part], £1/18/-; Barnett)

J.85.20984 Lady, crayons (London, Christie's, 6.II.1796, Lot 31, 3 gns)

J.85.20985 Girl's head, crayons (Conlennun; London, Christie's, 24.II.1798, Lot 15, £2/10/-; Bony)

J.85.20986 Lady, crayons (J. L. Harris; London, Christie's, 25.V.1798, Lot 33 with small portrait of Dr Buchanan, m/u)

J.85.20987 Lady's head, crayons (Walter Smiton, FSSA, painter in Edinburgh; sale p.m., Edinburgh, William Martin, 16.III.1798, Lot 432, s.v. Pavilion) [Pavilion artist untraced; no doubt a corruption or a location within the property (Getty Provenance Index)

J.85.20988 A woman's head, crayons (David Martin, portrait painter; sale p.m., Edinburgh, 4 St James's Square, William Bruce, 14.I.1799 & seq. [23.I.1799], Lot 745, unattributed)

J.85.20989 Lady, crayons (London, Christie's, 20.II.1800, Lot 121)

J.85.2099 Lady, crayons (London, Thomas King, 18.III.1800, Lot 63)

J.85.20991 Opera girl, crayons (Lieutenant-General Richard Burton Phillipson; Rev. Charles Burton Phillipson; Peterborough, John Fox, 22.IV.1800, Lot 31)

J.85.21 Lady's head in crayons (Donington Park, Lady Moira's dressing room, inv. a.1799). Lit.: Kenny 2013, p. 144

J.85.21001 Two female heads, crayons (Richard, Duke of Buckingham and Chandos; Stowe, Christie's, 12.IX.1848, Lot 96 n.r., 8 gns; The Misses Yardley)

J.85.21002 Lady, crayons (Duke of Portland, Welbeck, 1861 catalogue, no. 21; presumed destroyed a.1864). Lit.: Goulding 1936, p. xxxvii

J.85.2101 Lady, crayons (Duke of Portland, Welbeck, 1861 catalogue, no. 44; presumed destroyed a.1864). Lit.: Goulding 1936, p. xxxvii

J.85.21015 Lady, pstl (George Clausen, ARA, 1903). Exh.: London 1903, no. 250 n.r.

J.85.21017 Countess and flower-girl, pstl (Robert Clough 1903). Exh.: London 1903, no. 264 n.r.

J.85.2102 Lady in white dress with blue riband, pointing to a mask, pstl, 61x51 (Sir George Chetwynd, Bt, Grendon Hall, Atherstone; London, Christie's, 24.II.1912, Lot 49 n.r., 10 gns; Vetter)

J.85.2103 Young woman in a white dress, pink ribbon, flowers in her hair, m/u (Sir Archibald Macdonald 1915). Lit.: *Connoisseur*, XLI, .III.1915, opp. p. 145 φ



J.85.2105 Girl holding a cat; & pendant: J.85.2106 lady in blue dress with a muff, pstl, ov. (J. H. Fitzhenry 1911; sale p.m., London, Christie's, 21.XI.1913, Lot 2, 9 gns; Boss)

J.85.2107 Lady in blue dress, white hat; & pendant: J.85.2108 lady with a large bow in her hair, pstl (J. H. Fitzhenry 1911; sale p.m., London, Christie's, 21.XI.1913, Lot 3, 38 gns; Mitchison)

J.85.2109 Lady with pale green dress, head, pstl, 46x35.5 (London, Christie's, 17.IV.1909, Lot 137, £1/2/-; Beer)

J.85.211 Young girl in white dress with blue sash and white lace cap, a dog by her side, pstl, 72x56 ov. (London, Christie's, 19.IV.1909, Lot 65, 5 gns; Leggatt)

J.85.2111 Flora, pstl, 90x71 (Earl of Dunraven; London, Christie's, 5.II.1910, Lot 119, anon., 21 gns; Amor) [cf. Carrier]

J.85.2112 Lady in white and brown dress, pstl, 44.5x34 (T. W. Waller; London, Christie's, 10.VI.1910, Lot 78, 10 gns; Margerison)

J.85.2113 Lady in white dress, pstl, 25.4x19.7 (T. W. Waller; London, Christie's, 10.VI.1910, Lot 80, 3 gns; Leger)

J.85.2114 Lady in white dress and pink cloak, pstl, 54x41 (T. W. Waller; London, Christie's, 10.VI.1910, Lot 82, 4½ gns; Carrington)

J.85.2115 Lady in white and blue dress, flowers in her hair, pstl, 44.5x37 (T. W. Waller; London, Christie's, 10.VI.1910, Lot 83, 14 gns; Vicars or Filness)

J.85.2116 Lady, with embroidered cloak, 71x57 ov. (London, Christie's, 19.XI.1910, Lot 1, 2½ gns; Davis & Davis)

J.85.2117 Lady in blue dress with pearl ornaments, pstl, 56x43 (London, Christie's, 25.II.1911, Lot 41, 5 gns; Renton)

J.85.2118 Lady in white dress, wearing a spray of orange-blossom, pstl, 57x41 (London, Christie's, 25.II.1911, Lot 42, 5½ gns; Renton)

J.85.2119 Young girl, in white dress and blue shawl, asleep, pstl, 43x34 (London, Christie's, 8.IV.1911, Lot 125, as by Hogarth, 2½ gns; Newbery) [??attr.]

J.85.212 Lady in a pink dress; & pendant: J.85.2121 lady in blue dress and yellow scarf, pstl, 32x23 (London, Christie's, 17.VII.1911, Lot 92, sch. of Kneller, 8 gns; Ellis & Smith)

J.85.2125 Lady (Mr Walker 1911). Lit.: Sée 1911, repr. p. 245, as by J. R. Smith [??attr.] Φ?αv



J.85.2122 Lady, in white dress with blue ribbon, pointing to a mask, 61x51 (Sir George Chetwynd, Bt, Grendon Hall, Atherstone; London, Christie's, 24.II.1912, Lot 49, 10 gns; Vokin)

J.85.2123 Lady in green dress and large hat; & pendant: J.85.2124 lady in brown dress, pstl, 23x19 ov. (Jeffery Whitehead; London, Christie's, 6.VIII.1915, Lot 49, 11 gns; Hughes)

J.85.2125 Head of lady in white dress; & pendant: J.85.2126 head of lady in blue dress, pstl (Jeffery Whitehead; London, Christie's, 6.VIII.1915, Lot 50, 7 gns; Renton)

J.85.2127 Lady as Diana, in green dress, pink scarf, pstl, 58.5x46 (Major Sir Arthur J. Campbell Orde, Bt, Kilmorey; London, Christie's, 19.V.1916, Lot 122, 8 gns; Withers)

J.85.2128 Lady in a blue dress, hair falling over shoulders, pstl, 24x19 ov. (Sir Edward Coates; London, Sotheby's, 22.VI.1922, Lot 38 n.r., £18; Daniell)

J.85.2129 Lady in a blue dress, seated in an arm chair holding a fan, pstl, 24x19 (Sir Edward Coates; London, Sotheby's, 22.VI.1922, Lot 39 n.r., £5/10/-; Ackroyd)

J.85.213 Lady, aged 27, face slightly to left, brown hair with pearls, in plum-coloured velvet dress, edged with ermine, jewelled clasp, pearls in sleeves, blue background, pstl, 59x44, c.1740 (Lady Alfred Douglas, Weston House, near Norwich, 1926). Lit.: Duleep Singh 1928, II, p. 393, no. 36 n.r., as no. 1115 in undescrbed catalogue

J.85.2131 Lady with pearl necklace and earrings, pstl, c.1700 (Dr J. Law Adam 1928). Lit.: Keyes 1929, fig. 5 φ



J.85.2133 Lady with mantle fastened by a jewel, pstl, c.1709 (Dr J. Law Adam 1928). Lit.: Keyes 1929, fig. 6 φ



J.85.2135 Girl gathering corn, half-length, pstl, 71x58.5 (London, Sotheby's, 10.XII.1930, Lot 100a n.r., attr.)

J.85.2136 Lady wearing a pink turban, pstl (desc. Basil Oxenden (1874–1919); London, Christie's, 20.XI.1931, Lot 1 repr., with 4 others; Pawsey & Payne)

J.85.2137 Lady in a white head-dress, pstl (desc. Basil Oxenden (1874–1919); London, Christie's, 20.XI.1931, Lot 1 repr., with 4 others; Pawsey & Payne)

J.85.2138 Femme à mi-corps, de face, un bonnet de lingerie sur ses cheveux bouclés, robe blanche, ceinture à la taille, pstl, 31x24 ov. (Paris, Drouot, 25.V.1932, Lot 134 n.r., éc. anglaise, fin XVIII–XIX)

J.85.2139 Young lady, pstl, ov. (Sir Bruce Ingram, as Cotes) φ



J.85.214 Lady with a pearl necklace, pstl, 53x41 (Guildford c.1900; PC; legs; F. M. Shea, Margate, 1957. London art market 2025). Lit.: *Country life*, 18.IV.1957. p. 759 repr., attr. Russell [??] φ



J.85.21405 Child with a pigeon, pstl, 43.2x35.6 ov. (Earl of Sefton, Croxteth Hall; Croxteth Hall, Christie's, 17–20.IX.1973, Lot 994 n.r.)

J.85.2141 Woman, bust length, in an orange and white dress, pstl, 27x22 (Viscount Hawarden; London, Christie's, 22.XI.1977, Lot 103 n.r., £140)

J.85.2142 Women, 2 pendants, pstl, 30.5x25 ov., c.1710 (London, Christie's, 20.III.1979, £110)

J.85.2143 Penitent Magdalen, pstl, 71x46 (London, Christie's, 10.IV.1985, Lot 238, circle of Hugh Douglas Hamilton, £300)

J.85.21433 Young girl holding a basket of roses, pstl, 28x36 (Dennis Vanderkar; London, Christie's, 8.VI.1955, Lot 72, 6 gns; Saper. London, Christie's, 15.XI.1988, Lot 58 repr., est. £800–1200) [cf. Russell] φ



J.85.21435 Lady, pstl, 72x59 (London, Phillips, 12.II.1990, Lot 44 n.r., circle of Russell, est. £500–800, £520)

J.85.2144 Lady, half-length, in mourning, in painted ov., pstl, 27.5x21.5 (Dudley Snelgrove, FSA; London, Sotheby's, 19.XI.1992, Lot 166 n.r., English sch., c.1700, est. £100–150, £50 [=£55])

J.85.2145 Lady, quarter-length, in blue gown, pearl earrings, winged cherub brooch, cr. clr/copper, 27.5x21, c.1670 (A. C. Grant 1956. Dudley Snelgrove, FSA; London, Sotheby's, 19.XI.1992, Lot 172 repr., circle of Lely, est. £600–800, £1500 [=£1650]) [cf. Greenhill] φ



J.85.2146 Young girl in white dress, blue bandeau in her hair, holding a puppy, pstl, 41.9x33 (London, Christie's South Kensington, 14.VII.1993, Lot 192 n.r., follower of Russell, £140 [=£154])

J.85.2147 Lady in a blue and white striped dress and white lace bonnet, seated half-length at a table, pstl, 74x60 (London, Phillips, 13.XII.1994, Lot 8 n.r., circle of Cotes, est. £400–600)

J.85.21475 Girl in a blue dress trimmed with lace, pstl, 31x23.5 ov. (London, Christie's, 8.VII.1997, Lot 18 repr., circle of Ashfield, est. £1500–1800) φ



J.85.2148 Girl in white dress holding fruit, pstl, 60.9x48.2 (Aspley House, Aspley Guise, Bonhams & Weller King, 12.X.1999, Lot 408 repr., follower of Hoare, est. £1500–2500) φ

J.85.2149 Lady in a white dress, pstl, 69x57 (London, Bonhams Knightsbridge, 21.I.2003, Lot 78 repr., follower of Russell, est. £1200–1800) [cf. Masquerier] φ



J.85.2151 Lady in a white dress, pstl, 90x76 (Stansted, G. E. Sworder, 18.III.2003, English sch., £480) φ



Photo courtesy G. E. Sworder & Sons

J.85.2154 Young lady, half-length, in blue dress and white fichu, pstl, 62.8x47.6 (London, Christie's South Kensington, 27.III.2003, Lot 3 repr., est. £600–800) φ

J.85.2156, v. J.395.1016

J.85.2158 Lady, pstl, 74x61 ov. (Cockermouth, Cumbria, Mitchells, 15–16.VII.2004, Lot 627 repr., est. £300–400) φ



J.85.216 Lady, pstl, 63.5x41 ov. (Grantham, Golding Young, 2–3.XI.2004, Lot 3079, manner of Reynolds, det. repr., est. £150–200) φ



J.85.2162 Femme, pstl, 46x37 (Paris, Tajan, 15.XI.2004, Lot 127 n.r., est. €1500, €3008). Exh.: Paris 1919a

J.85.2163 Lady in a white dress, tall hat, pstl, 28x23 ov. (Leominster, Brightwells, 26.I.2005, Lot 118 repr., circle of Russell, est. £300–500, £300) φ



J.85.2165 Lady in a white dress, pstl/ppr, 75x64.2 (New York, Sotheby's, 29.I.2005, Lot 128 repr., circle of Russell, est. \$4–6000, \$3000) φ



Photo courtesy Sotheby's

J.85.2168 Lady, bust-length, wearing a bonnet with a blue ribbon, pstl, 26.7x21 (London, Christie's

South Kensington, 23.III.2005, Lot 88 repr., as Humphry, est. £400–600, b/i; London, Christie's South Kensington, 12.VI.2005, Lot 108 n.r., est. £50–100, £80) [??attr.] φ

J.85.217 Young woman, pstl/ppr, 26.5x19 (Malvern, Victoria, Deutscher-Menzies, 22.IX.2005, Lot 276 repr., circle of Kneller, est. Aus\$1000–1500, Aus\$2400 [= 2880]) φ



J.85.2172 Young woman, pstl/ppr, 24.5x18 (Malvern, Victoria, Deutscher-Menzies, 22.IX.2005, Lot 277 repr., attr. Hoare, est. Aus\$1000–1500, Aus\$2400 [= 2880]) φ



J.85.2174 Lady in a white dress with blue bodice, a blue ribbon in her powdered hair, pstl, 23x18 (Ipswich, Bonhams, 8–9.III.2006, Lot 316 repr., circle of Hamilton, with three others, est. £700–900, £799) [circle of Sharples] φ



J.85.2176 A country beauty; & pendant: J.85.2177 a town beauty, pstl, 30.5x20.3 ov. (Toronto, Waddington's, 16.V.2006, Lot 102 repr., English sch., 19th century, est. C\$600–800) φ



J.85.2179 Lady in a turban headdress and pearl necklace, pencil, cr. clr/br. ppr, 35.6x28.5 (Sir Peter Lely, L.2094. Colin Hunter. London, Christie's, 5.VI.2006, Lot 1 repr., circle of Sir Peter Lely. Lowell Libson & Jonny Yarker Ltd, *The spirit & force of art*, exh. 20.VI.–6.VII.2018, no. 60) φσ



J.85.2181 Girl in a blue dress, pstl, 23x18.5 ov. (Bexhill-on-Sea, Gorrings, 4–5.VII.2006, Lot 1459 repr., follower of Francis Cotes, est. £100–150) [cf. Hayter] φ



J.85.2183 Lady in a white dress, half-length in half-painted oval, pstl, 63.5x43 (Shrubland Park sale, Sotheby's, 19.IX.2006, Lot 401, circle of Hoare, est. £200–400) φ



J.85.2185 Lady in a white dress, half-length, in a romantic landscape, pstl, 76.8x58.4 (London, Christie's South Kensington, 4.X.2006, Lot 858 repr., manner of Gainsborough, est. £800–1200) φ



J.85.2187 Young lady wearing a bonnet, pstl, s, 42.5x35 (Ilkley, Hartleys, 11–12.X.2006, Lot 811 repr., as Russell, est. £250–350) φ



J.85.2189 Young girl in a cream dress with orange ribbon round her waist, seated beside a tree, pstl, 21.5x16 ov. (Leyburn, Tennants, 23–24.XI.2006, Lot 728 repr., est. £150–300) φ



J.85.2191 Young lady in a blue dress, pstl/ppr, 62.5x51 ov. (London, Bonhams, 27.XI.2007, Lot 32 repr., est. £250–350) [cf. Tonelli] φ



J.85.2193 Young girl with her dog, pstl, pencil, 25.6x20 ov. (London, Christie's South Kensington, 11.XII.2007, Lot 554 repr., circle of Hamilton, est. £300–400, £438) φ



J.85.2195 Young lady, pstl/ppr, 37.5x30 (San Francisco, Bonhams, 13.I.2008, Lot 1007 repr., with a pnt. by another hand, est. \$300–500) φ



J.85.2197 Young woman as a sibyl, grisaille pstl, 32x28 ov., inscr. verso "For Margaret Ellen Beven at her particular request" (Nottingham, Mellors & Kirk, 28–29.II.2008, Lot 644 repr., as by follower of William Pether, est. £200–300) φ



J.85.2199 Lady in a white dress, pstl, 32x25 ov. (Woburn, Charles Ross, 20.III.2008, Lot 336 repr., circle of Francis Alleyne, est. £100–150) φ



J.85.2201 Young lady, half length, in a blue dress with flowers in her hair, pstl, 39.5x31 ov. (London, Christie's South Kensington, 20.IV.2008, Lot 186 n.r., with circle of Gardner, gentleman in brown coat, repr., est. £400–600)

J.85.2202 Young lady in a green and pink dress, pstl/ppr, 28x23 ov. (Paula Peyraud; New York, Bloomsbury, 6.V.2009, Lot 58 repr., early 19th century, est. \$500–800, b/i. New York, Stair

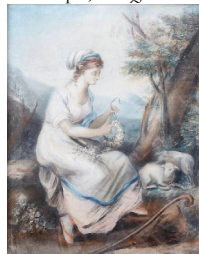
Galleries, 30.IV.–1.V.2016, Lot 304 repr., est. \$300–500) [later] φ



J.85.2204 Woman in a blue dress, pstl, 58.7x47.6 (Richard Wright; Boston, Skinner, 24.X.2009, Lot 753 repr., as English sch., 19th century, est. \$700–900) [18th century] φ



J.85.2206 Shepherdess with a flower garland and sheep, pstl, 50x39.5 (Oxford, 25.XI.2009, Lot 52 repr., est. £100–150) φ



J.85.2208 Lady in a white dress, pearls in hair, pstl, 56x41 ov. (Donnington, Dreweatts, 25.III.2010, Lot 2 repr., circle of Hoare, est. £3–5000) φ



J.85.221 Lady in a blue dress, pstl/ppr, 66x50.8, c.1785 (London, Christie's, 14.XI.1989, Lot 55, as by Russell, £2500. PC 2010) [??attr.] φ



J.85.2212 Lady in a white dress, blue mantle, almost in profile, pstl, 28x23 ov. (Saunders Fine art, Solihull, as French sch.; PC 2010) [?French or English] φ



J.85.2214 Young woman with a large hat holding an infant, pstl, 68.5x56 (Charles Pilkington Ltd, Dublin, c.1960. Watlington, Jones & Jacob, 20.X.2010, Lot 430 repr., attr. Anker Smith, est. £300–500. Lewes, Gorrings, 3–4.VII.2013, Lot 1405 repr., as by Anker Smith, est. £100–200; South Cerney, Cirencester, Dominic Winter, 9.III.2022, Lot 103 repr., as by Anker Smith, est. £100–200) [??attr.; cf. J. H. Benwell; J. R. Smith] φ



J.85.2216 Lady in a blue dress, pearl necklace and earrings, holding a fan, pstl/ppr, 51.5x37.5 (Shreve, Boston. Marlborough, Skinner, 14.VIII.2011, Lot 595 repr., British sch., est. \$600–800) [cf. Saunders] φ



J.85.2218 Lady in white dress with feathered hat, pstl/ppr, 15x12 ov. (acqu. c.1970, Cheltenham; PC 2011) φ



J.85.2224 Girl in a yellow dress, pstl, 27x22 (Lincoln, Golding Young & Thos Mawer, 26.IX.2012, Lot 209 repr., est. £100–200, £130) [c.1700; cf Henrietta Johnston] φ



J.85.2226 Woman in a black dress with white collar and cap, pstl, 27x22 (Lincoln, Golding Young & Thos Mawer, 26.IX.2012, Lot 210 repr., est. £80–140, £120) φ



J.85.2228 Lady in a blue dress, profile, pstl, 24x18 ov. (Lincoln, Golding Young & Thos Mawer, 26.IX.2012, Lot 211, detail repr., est. £80–140, £110) [cf. Bermingham; Towne] φ



J.85.2223 Lady in a white dress, profile, to left, pstl/ppr, 24x19 ov. (Trelissick House, Bonhams, 23.VII.2013, Lot 125 repr., circle of Downman, est. £150–250) φ



J.85.2239 Lady in a pink dress, profile, to left, pstl/ppr, 24.5x19 ov. (Leyburn, Tennants, 25–26.VII.2014, Lot 984 repr., as French sch., est. £300–400) [?]; English sch., c. 1780] φ



J.85.2241 Lady in a blue dress, pstl, 26.5x20 (Manosque, Primpied Rolland, 20.II.2015, as XIX^c, est. €80) [?]; English sch., c.1780; cf. Towne] φ



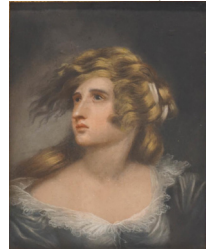
J.85.2242 Lady in a pink dress, pstl, 24x18.3 (Watlington, Jones & Jacob, 11.XI.2015, Lot 412 repr., attr. Gardner, est. £400–600) [?]; follower of Hamilton., c. 1770] φ



J.85.2243 Young girl in a white dress, blue sash, with dog, pstl/ppr, 52x41 (London, Chiswick Auctions, 12.XII.2017, Lot 25 repr., attr. Russell, est. £400–600) [??attr.] φ



J.85.22431 Young woman in a blue dress, wind-swept hair, pstl, 39x29.5 (Binegar, Somerset, Mendip Auctions, 13.I.2018, Lot 367 repr., circle of Romney, est. £400–600) [??attr.] φ



J.85.22432 Woman in a blue dress, white bonnet and fichu, pstl, 25x20 ov. (Harold Ward, Manthorpe House, Grantham; Nottingham, Mellors & Kirk, 6–7.II.2019, Lot 449 repr. est. £150–250) φ



J.85.22435 Young girl with dog in a landscape, pstl/ppr, 79x98.5 (David Geider Gallery, London, c.1975; The Ross Collection, Knockmore, Enniskerry, Co. Wicklow. London, Roseberys, 25.III.2020, Lot 192 repr., est. £1000–1500; London, Roseberys, 17.X.2020, Lot 520 repr., est. £250–350) φπσ



J.85.22436 Lady in a white dress holding a book, pstl, 35x29 ov. (Dublin, Adams, 13.X.2020, Lot 454 repr., as style of Hamilton, with another by Hamilton, J.375.22134, est. €800–1200; Dublin, Adams, 14.IV.2021, Lot 182 repr.) φ



J.85.22437 Young woman with hurdy-gurdy in a landscape, pstl, 74x58.5 (Pawsey & Payne 1962. David Hall Thirsk. PC 2022; Farnham, Parker Fine Art, 7.III.2024, Lot 9 repr., as by John Russell, est. £500–700) [??attr.] φ



J.85.22438 Lady in mourning dress, pstl/ppr, 23.9x18.8 ov. (Ernest Renton; Emile Gross; Xavier Haas; New York, Anderson, 13–14.I.1927, Lot 113 repr., as watercolour, as by Hugh Douglas Hamilton, as in Paris 1919a, no.



25 n.r.) [??attr.]

J.85.22439 Lady in green dress, pstl/br. ppr, 26x20 (Lord Sandys, Ombersley Court; London, Christie's, 29.XI.2023, Lot 192 repr., as attr. Ashfield, est. £2–3000, b/i; Maidenhead, Dawsons, 30.V.2024, Lot 38 repr., est. £1000–1500) [??attr.; ?a/r



Lely] J.85.22441 Lady in a blue dress trimmed with ermine, pstl, 58.5x44.5 (Canterbury Auctions, 7–8.VI.2024, Lot 948 repr., est. £200–300, £200) [cf. Saunders]φv



Unknown pendant couples – museums

J.85.2248 Gentleman in a grey coat; & pendant: J.85.2249 lady in a white dress, pstl/ppr, [c.1720]

(Benthall Hall, Shropshire, National Trust, inv. 509652–3) [cf. Saunders; De Graves] φ



J.85.225 Man in a blue coat; pendants: J.85.2251 woman in a greenish dress with lace cap; & J.85.2252 young man in a brown coat, profile, pstl, ov., c.1780 (Montacute, National Trust) [cf. Towne] φ



Unknown pendant couples – order of appearance

J.85.2253 Jeune homme, pstl, 23x20 ov.; & pendant: J.85.2254 Jeune femme, pstl, 23x20 ov. (Mme E. Warneck; Paris, 3–4.V.1905, Lot 121/120 n.r.)

J.85.2255 Gentleman in brown coat; & pendant: J.85.2256 lady in blue dress, pstl, 44.5x36 (J. H. Fitzhenry 1911; sale p.m., London, Christie's, 21.XI.1913, Lot 1, 13 gns; Renton)

J.85.2257 Gentleman; & pendant: J.85.2258 lady, pstl, 25.4x22 ov. (London, Christie's, 20.II.1909, Lot 76, 5 ½ gns; Gould)

J.85.2259 Gentleman in blue coat; & pendant: J.85.226 lady in grey dress, pstl, 35.5x29.5 ov. (London, Christie's, 10.IV.1911, Lot 58, 3 gns; n/k)

J.85.2261 Gentleman in his study; & pendant: J.85.2262 lady in a landscape, gch., 51x40.5 (Newbury, Dreweatt Neate, 5.III.1997, Lot 80 n.r., attr., est. £1500–2000, £1700)

J.85.2263 Gentleman, half-length in a brown coat; & pendant: J.85.2264 lady, half-length in a blue dress, pstl, 20.3x15.3 ov. (London, Christie's South Kensington, 27.I.1999, Lot 835 n.r., est. £400–600)

J.85.2265 Boy, small half-length, in a red jacket; & pendant: J.85.2266 girl, in a blue dress, pstl/ppr, 30.4x22.8 (London, Christie's South Kensington, 24.I.2001, Lot 511 repr., est. £300–500) φ

J.85.2269 Gentleman, in a long wig; & pendant: J.85.227 lady, in a pale blue dress with lace, pstl, 27x19 (Bury St Edmunds, Bonhams Athenaeum, 22.VII.2002, Lot 344 repr., est. £800–1200) [cf. Luttrell] φ

J.85.2272 Gentleman, bust length with powdered hair, grey jacket and blue waistcoat, pstl, 25.5x19 ov.; & pendant: J.85.2273 Lady in a

black bonnet, pstl, 25.5x19 ov. (Bryan Hall, The Old Rectory, Banningham, Norfolk, Bonhams, 22.III.2004, Lot 163 repr./n.r., circle of Hamilton, est. £400–600, £750) φ



J.85.2275 Gentleman, in profile, 24.5x19.4; & pendant: J.85.2276 lady, in profile, 24.5x19.4 (London, Christie's, 13.VI.2002, Lot 10 n.r./repr., olim attr. George Dance. London, Christie's South Kensington, 4.VI.2008, Lot 500 repr., English sch., early 19th century, est. £1200–1800) [cf. Bermingham; Towne] φ



J.85.2279 Man in a blue coat; & pendant: J.85.228 woman in a light blue dress and hat in an outdoor setting, pstl, 24x18 ov. (Birmingham, Biddle & Webb, 1.IV.2011, Lot 188 repr., est. £600–800. Cheltenham, Chorley's, 20–21.II.2014, Lot 368 repr., attr. Francis Cotes, est. £600–800) φ



J.85.2283 Naval officer; & pendant: J.85.2284 lady in blue dress, flowers in her hair, pstl 37x30 ov. (Etwell, Hansons, 31.III.2012, Lot 320 repr., est. £100–150) φ



J.85.2287 Gentleman in blue coat, profile, to right; & pendant: J.85.2288 lady in pink dress, profile, to left, pstl, 25.7x20.3 ov. (Meryl & Jay Weiss; Boston, Skinner, 18.II.2007, Lot 104 repr., attr. James Sharples, est. \$1000–2000, \$2600. Jeffrey Tillou Antiques, Litchfield, Connecticut, 2012, anon.) [??attr.; cf. Towne] φ



J.85.2291 Man in blue coat; & pendant: J.85.2292 lady in blue dress, pstl/ppr, 25x19.5 ov. (Leyburn, Tennants, 14.IX.2013, Lot 1073 with another, as follower of Highmore, est. £60–90) φ



J.85.2295 Man in blue coat; & pendant: J.85.2296 lady in pink dress, pstl/ppr, 25x19.5 ov. (London, Christie's South Kensington, 18.III.2014, Lot 105, as follower of Downman, est. £600–800) φ



J.85.2301 Man in brown coat; & pendant: J.85.2302 woman in blue dress with black lace shawl, pstl/ppr, 27x21 ov. (Etwell, Derbyshire, Hansons, 28–30.IX.2017, Lot 930, as circle of Hamilton, est. £400–600) φ



J.85.23021 Man in light blue coat; & pendant: J.85.23022 woman in yellow dress, pstl/ppr, 27x19 (Edinburgh, Lyon & Turnbull, 4.VII.2018, Lot 13, as circle of Hamilton, est. £250–350) [cf. Geekie] φ



J.85.23023 Man in blue coat; & pendant: J.85.230231 lady in white dress, pstl, 58x44 ov. (Prudence & Marius Goring; Billingshurst, Bellmans, 1.XII.2018, Lot 1071 repr., anon.,) [cf. S. Cotes] φ



J.85.230232 Young man in red mantle; & pendant: J.85.230233 lady in purple dress and red mantle, pstl, 26.3x19 (Edward Croft-Murray; Salisbury, Woolley & Wallis, 11–12.VIII.2021, Lot 346 repr., est. £500–800) [cf. Edward Gibson] φ



J.85.230234 Gentleman in brown coat; & pendants: J.85.2302341 lady in dress with blue trim; J.85.2302342 lady in dress without trim, pstl, 25.5x20.5 ov. (Colchester, Reeman Dansie, 22.IX.2024, Lot 25 repr., est. £100–200) φ



J.85.23024 Gentleman in blue coat; & pendant: J.85.230241 lady in blue dress with blue trim, pstl, 26x21 ov. (Nottingham, Mellors & Kirk, 11–12.III.2025, Lot 821 repr., est. £150–200) φ



J.85.23024 Gentleman in blue coat; & pendant: J.85.230241 lady in blue dress with blue trim, pstl, 26x21 ov. (Nottingham, Mellors & Kirk, 11–12.III.2025, Lot 821 repr., est. £150–200) φ



Unknown groups &c. – museums

J.85.2304 Study of dogs, pstl, 19.4x24, c.1780 (Brighton & Hove Museums & Art Gallery, inv. 102322, English sch.)

Unknown groups &c. – order of appearance

J.85.231 Head in Cryon in pastel (London, Green Dragon, next to Northumberland House, .III.1691, Lot 137)

J.85.2311 Fine head in Cryon in pastel (London, Green Dragon, next to Northumberland House, .III.1691, Lot 143)

J.85.2312 Some pictures in pastelle (Wm Dubosc; sale p.m., London, Peter Lecompte, Linnen-Draper, Panton Street, adv. *Post man*, 25–28.XI.1704)

J.85.2313 Four heads, crayons (William Sykes; sale p.m., London, 2.III.1725 & seq., Lot 579) J.85.2314 Two heads, crayons (Thomas Coke of Melbourne; *Catalogue of pictures of Vice Chamberlain Coke left in the possession of Vice Chamberlain Stanhope at St James's Palace*, 24.VI.1724, no. 116)

J.85.2315 Five heads, crayons (Charles Christian Reisen; London, 21.II.1726, Lot 44) J.85.2316 Six small portraits, crayons (Lord Hyde, Blandford House; inv. 1750; one at The Grove). Lit.: Theresa Lewis, *Lives of the friends and contemporaries of Lord Chancellor Clarendon*, 1852, III, p. 259f

J.85.2317 Dog, crayons (Lord Hyde, Blandford House; inv. 1750). Lit.: Theresa Lewis, *Lives of the friends and contemporaries of Lord Chancellor Clarendon*, 1852, III, p. 259f

J.85.2318 20 heads, crayons (George Vertue; sale p.m., London, Ford, 5th day, 21.III.1757, Lot 33)

J.85.2319 30 heads, crayons (George Vertue; sale p.m., London, Ford, 6th day, 22.III.1757, Lot 18)

J.85.232 A head, crayons, Society of Artists 1768, no. 299, by a lady

J.85.2321 A drawing, for a print, in crayons, Free Society 1769, no. 99, by a gentleman

J.85.2322 A drawing, for a print, in crayons, Free Society 1769, no. 100, by a gentleman

J.85.2323 Fruit from nature, in crayons, Free Society 1769, no. 101, by a gentleman

J.85.2324 Portrait, crayons, Free Society 1769, no. 147, by a lady

J.85.2325 Three portraits in crayons, framed and glaized (Lee 1769). Lit.: *A catalogue of the large and capital museum of Sir Thomas Flydyer, Knt*, London, 1769

J.85.2326 Two heads in crayons, “admirably fine” (Sir Thomas Robinson, Rokeby 1770). Lit.: Arthur Young, *A six months' tour through the north of England*, London, 1770, II, p. 186 n.r.

J.85.2327 Two fruit pieces, crayons, Society of Artists 1771, no. 315, by a lady

J.85.2328 Three heads, crayons (Francis Cotes; sale p.m., London, Cavendish Square, Langford, 21–25.II.1771, Lot I/9)

J.85.2329 Two fruit pieces, crayons (Francis Cotes; sale p.m., London, Cavendish Square, Langford, 21–25.II.1771, Lot IV/15)

J.85.233 A picture, crayons, Society of Artists 1771, no. 407, by a lady

J.85.2331 A head, crayons, Free Society 1772, no. 100, by a lady, pupil to William Burgess

J.85.2332 The Virgin and Child, crayons, by a lady [honorary exhibitor], Society of Artists 1773, no. 444

J.85.2333 A picture, crayons, Society of Artists 1774, no. 362, by a lady

J.85.2334 A view, crayons, Society of Artists 1774, no. 363, by a lady

J.85.2335 A head, crayons, Liverpool 1774, by a young lady

J.85.2336 Head, crayons, Society of Artists 1775, no. 348, by a gentleman

J.85.2337 Head, crayons, Society of Artists 1775, no. 349, by a gentleman

J.85.2338 Venus and attendants, crayons, by a Lady, Royal Academy 1776, no. 355

J.85.2339 A head, crayons, Free Society 1778, no. 153, by a gentleman

J.85.234 Drawing in Crayons of Fruit & plate Glass in a gilt frame (David Garrick, inv. p.m., Adelphi, 18.II.1779, no. 116, [£1])

- 1.85.2341 Group of lap dogs, crayons (David Garrick (1717–1779); inv. p.m., Hampton, no. 81, [£1]; his widow; sale p.m., Hampton, Burrell, 21.vii.1823 & seq., Lot 13)
- 1.85.2342 Head, crayons (David Garrick; inv. p.m., Hampton, Green strip bed room, 1.iii.1779, no. 54)
- 1.85.2343 Venus from the bath, crayons (David Garrick; inv. p.m., Hampton, no. 73, [£1]; =? his widow; sale p.m., Hampton, Burrell, 21.vii.1823 & seq., Lot 22, as a nymph, half-figure) [cf. Hoare]
- 1.85.23431 Leda, in crayons (London, Christie's, 18.ii.1780, Lot 14, 2 gns; Watson)
- 1.85.23432 Two portraits in crayons (James Linnell; London, Christie's, 9.vi.1780, Lot 97, £1/10/-; Woolley)
- 1.85.23433 Two portraits in crayons (James Linnell; London, Christie's, 9.vi.1780, Lot 98, £1/6/-; Philipp Joseph Tassaert)
- 1.85.23434 Ten fine portraits in crayons (London, Hutchins, 15.ii.1781, Lot 49)
- 1.85.23435 Thirteen fine portraits in crayons (London, Hutchins, 15.ii.1781, Lot 50)
- 1.85.23436 Five fine portraits in crayons (London, Christie's, 2.xi.1781, Lot 102, 19 s.; Deschamps)
- 1.85.23437 Virgin and Son, crayons (Elizabeth, Dowager Lady Trevor; Bath, Trimnell, 15.v.1782, Lot 44)
- 1.85.23438 Rural courtship, crayons (Lodovico Carlo Maria Barbiano di Belgiojoso; London, Christie's, 27.xi.1782, Lot 30)
- 1.85.23439 Pair of heads, crayons (London, Hutchins, 11.ii.1783, Lot 11, £7/6/-)
- 1.85.234391 Four heads, crayons (London, Hutchins, 11.ii.1783, Lot 12, £14/6/-)
- 1.85.234392 A portrait; & 1.85.234393 a piece of fruit, crayons (London, Hutchins, 11.ii.1783, Lot 39, 6 gns)
- 1.85.234394 Portrait, crayons (London, Hutchins, 11.ii.1783, Lot 46 [part], £14)
- 1.85.234395 Drawing, crayons (George Michael Moser, RA; London, Hutchins, 7.vii.1783, Lot 88 [part])
- 1.85.234396 Two portraits, crayons (London, Christie's, 17.i.1784, Lot 23, 10/-)
- 1.85.234397 Two small heads, crayons (Ralph, 2nd Earl Verney; Aylesbury, Christie's, 7.v.1784, Lot 81)
- 1.85.234398 Holy Family, crayons (London, Christie's, 21.v.1784, Lot 72, 2 gns; Skirrow) = ?Holy Family, crayons (Benjamin Goodison; London, Christie's, 8.vii.1784, Lot 3 [part])
- 1.85.234399 Madonna and Child, crayons (Seabert; London, Christie's, 25.x.1785, Lot 53)
- 1.85.2343991 Two heads, crayons (Coote Molesworth; London, Christie's, 28.vi.1786, Lot 1 [part])
- 1.85.2343992 Venus & Cupid, crayons (Sir John Taylor, Bt; London, Christie's, 27.iv.1787, Lot 12, 3 gns; William Roscoe)
- 1.85.2343993 Holy Family, crayons (William Beldam; London, John Spurrier, 31.v.1787, Lot 8)
- 1.85.2343994 Group of bacchanalians, crayons (London, Christie's, 7.xi.1788, Lot 22. 8s.; Clark)
- 1.85.2343995 Two heads, crayons (London, Christie's, 31.v.1787, Lot 22)
- 1.85.2343996 Two heads, crayons (London, Christie's, 31.v.1787, Lot 23)
- 1.85.2343997 Three portraits, crayons (London, Greenwood, 12.xii.1788, Lot 23)
- 1.85.2343998 Pair of portraits, crayons (London, Christie's, 19.iii.1789, Lot 74, £1/10/- with others; Rev. Mr Style)
- 1.85.2343999 Two historical figures, crayons (London, Christie's, 19.iii.1789, Lot 79, £1/15/- with others; Bellingham)
- 1.85.23439994 A wood scene; & a storm, crayons (Viscount Dudley & Ward; London, Christie's, 22.vii.1789, Lot 44, £3/18/-; Stafford)
- 1.85.2344 Head, crayons, Society of Artists 1790, no. 128, by a gentleman
- 1.85.23441 Madona and Child, crayons (John Hill; London, John Willock, 11.ix.1790, Lot 188, £2/3/-)
- 1.85.23442 Lady and Child, crayons (John Keyse Sherwin; London, Kennett, 11.ix.1790, Lot 8, 1 gn)
- 1.85.23443 Two heads, crayons (Seguier; London, Christie's, 27.vi.1791, Lot 33, 16s.; General Thomas Plaistow)
- 1.85.23444 Two views, crayons (London, Greenwood, 15.xi.1791, Lot 45)
- 1.85.23445 A fruit piece, crayons (London, Christie's, 22.xi.1791, Lot 41 [part], £2; Barker)
- 1.85.23446 A fruit piece in crayons (John Norris Hewett; sale p.m., London, Christie's, 20.i.1792, Lot 6 [part], b/i)
- 1.85.23447 A traveller sleeping, crayons (John Norris Hewett; sale p.m., London, Christie's, 20.i.1792, Lot 16 [part], b/i; Corrale)
- 1.85.23448 Two portraits, crayons, large (London, Thomas King, 31.i.1792, Lot 111)
- 1.85.23449 Head, crayons (Webb; London, John Gerard, 17.v.1792, Lot 24; Askew)
- 1.85.2345 Head, crayons (Webb; London, John Gerard, 17.v.1792, Lot 25; Phillips)
- 1.85.23451 Two heads, crayons, large (London, Thomas King, 7.vii.1792, Lot 139)
- 1.85.23452 Portrait, crayons (London, Christie's, 6.ii.1793, Lot 65)
- 1.85.23453 Virgin and Child, crayons (London, Greenwood, 24.v.1793, Lot 77)
- 1.85.23454 Large and capital landscape and figures, with an extensive distance, crayons (London, Greenwood, 24.v.1793, Lot 73)
- 1.85.23455 Old man and woman, crayons (London, Christie's, 10.iv.1794, Lot 27)
- 1.85.23456 Children; & pendant: lady, crayons (Charles Bembridge; London, Skinner & Dyke, 22.v.1794, Lot 14, 8s.; Fox)
- 1.85.23457 Fruit, crayons (Wilhelm Cramer; London, John Boulton, 18.vi.1795, Lot 150, 7s.)
- 1.85.23458 Ceres; & Venus bathing, crayons (Mayer; London, Christie's, 5.xi.1795, Lot 59; Harwood)
- 1.85.23459 Two heads, crayons (Smith; London, Harry Phillips, 3.vi.1796, Lot 46)
- 1.85.2346 Two of Venus, crayons (James Macpherson; London, Christie's, 24.ix.1796, Lot 8 [part], £4/14/-; Anderson)
- 1.85.234461 Venus, crayons (London, Thomas King, 4.ii.1797, Lot 76)
- 1.85.23462 Portrait, crayons (London, Hutchins, 16.ii.1797, Lot 93 [part], with portrait of Ben Jonson, m/u)
- 1.85.23463 Three portraits, crayons (London, Hutchins, 16.ii.1797, Lot 11 [part])
- 1.85.23466 A horse's head, crayons (David Martin, portrait painter; sale p.m., Edinburgh, 4 St James's Square, William Bruce, 14.i.1799 & seq. [17.i.1799], Lot 235, unattributed)
- 1.85.23467 Four landscapes and 3 portraits, crayons (James Bretherton; London, Christie's, 1.ii.1799, Lot 168, 18s.; Thomas Palser)
- 1.85.23468 Portrait, crayons (James Bretherton; London, Christie's, 1.ii.1799, Lot 154 [part])
- 1.85.23469 Two fruit pieces, crayons, 33x51, gilt frame, one glass broken (David Martin, portrait painter; sale p.m., Edinburgh, 4 St James's Square, William Bruce, 14.i.1799 & seq. [2.ii.1799], Lot 614, unattributed, among Paintings by the first masters)
- 1.85.2347 The laughing and crying philosophers, crayons (Stephen Elmer; London, Harry Phillips, 13.vi.1799, Lot 145, 19s.; Money)
- 1.85.23471 Portrait, crayons (London, Harry Phillips, 16.xi.1799, Lot 90, 7s.; Wood, Oxford Street)
- 1.85.23472 Child and dog, crayons (London, Harry Phillips, 13.iii.1800, Lot 102)
- 1.85.23473 Two heads, crayons (Mrs Lynch; Ipswich, Roper & Doughty, 31.iii.1800, Lot 42)
- 1.85.23474 Three heads, crayons (Mrs Lynch; Ipswich, Roper & Doughty, 31.iii.1800, Lot 45)
- 1.85.23475 Playing a tambourine; & pendant, crayons (London, Harry Phillips, 21.v.1800, Lot 159)
- 1.85.23476 A pair of medallions and flowers; & 2 of children and birds, crayons (London, Harry Phillips, 21.v.1800, Lot 160)
- 1.85.23477 Two portraits, crayons (London, Fisher, 22.v.1800, Lot 118)
- 1.85.23478 Samuel and Elizabeth, and Faith and Hope, beautiful in crayons (a gentleman, Clipston Street; London, Tom's Coffee House, Cornhill, Edwards, adv. *Times*, 6.iii.1799)
- 1.85.23479 Three portraits, crayons (Richard, Duke of Buckingham and Chandos; Stowe, Christie's, 23.ix.1848, Lot 232a n.r., 13 gns; James Parker)
- 1.85.2348 Group of 6 pstls, ½ length, life-size, mid.-18th century: a clergyman in wig, gown, bands; two gentlemen in laced coats; three ladies, full dark backgrounds (PC 1889). Lit.: E. W. Hackwood, *Notes and queries*, 2.ii.1889, p. 97
- 1.85.23481 Music, pstl (Earl of Bessborough; vente p.m., London, Christie's, 14.iii.1891, Lot 137 n.r., 8½ gns; Parsons)
- 1.85.23482 Madonna and Child, pstl (Earl of Bessborough; vente p.m., London, Christie's, 14.iii.1891, Lot 138 n.r., ½ gn; Cohen)
- 1.85.23483 Portrait, early Georgian period, pstl (S. Melton Fisher 1903). Exh.: London 1903, no. 244 n.r.
- 1.85.23485 Lovers, pstl, 53x44.5 ov. (J. H. Fitzhenry 1911; sale p.m., London, Christie's, 21.xi.1913, Lot 1, 19 gns; Boss)
- 1.85.2349 Two street children, pstl, 48x36 (London, Sotheby's, 10.xii.1930, Lot 98 n.r., attr.)
- 1.85.23494 Enfant, pstl (succession Fernand Andrement a.1945; procédure close 4.ii.1961). Lit.: *Répertoire des biens spoliés en France*, item 1530, OBIP no. 30.959 n.r.
- 1.85.23486 Lady and her child, in blue dresses with a festoon of flowers, pstl, 89x70 (Captain B. C. Vernon-Wentworth, Wentworth Castle, Barnsley; London, Christie's, 13.xi.1919, Lot 1 n.r.)
- 1.85.23487 Lady seated holding a festoon of flowers, her two daughters by her side, pstl, 90x70 (Captain B. C. Vernon-Wentworth, Wentworth Castle, Barnsley; London, Christie's, 13.xi.1919, Lot 1 n.r.)
- 1.85.23495 Portrait, pstl (Sylvain Rosengart-Famel a.1945; procédure close 5.viii.1961). Lit.: *Répertoire des biens spoliés en France*, item 1534, OBIP no. 48.998 n.r.
- 1.85.235 Two children playing cards, pstl, 39.5x29 (Castle Howard, Sotheby's, 12.xi.1991, Lot 529, circle of Russell, est. £800–1200, £1400 [=£1540]) φ



J.85.2352 The studious shepherdess, pstl (New York, Sotheby's, 14.X.1992, sch. of Reynolds)

φ

