

Neil Jeffares, *Dictionary of pastellists before 1800*

Online edition

EIMMART, Maria Clara

Regensburg 27.V.1676 – Altdorf 29.X.1707

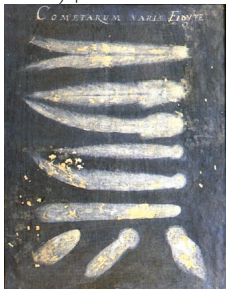
She was the daughter of the history painter, portraitist and amateur astronomer Georg Christoph Eimmart d. J. (1638–1705), with whom she collaborated. Her father was director of the Malerakademie in Nürnberg but also established a private observatory. She was given a broad education in the fine arts, and specialised in botanical and astronomical illustrations. She made a series of some 350 drawings of lunar phases, observed by telescope, and captured on distinctive blue paper. Twelve of these were given to conte Marsili, a scientific collaborator of her father, and ten survive in Bologna, together with three smaller studies on brown paper. The medium is described in most sources as pastel, but may be mixed with gouache or tempera. She married her father's pupil and successor, the astronomer Johann Heinrich Müller (1671–1731), and died in childbirth.

Bibliography

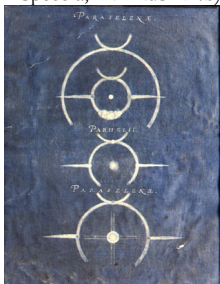
Bénézit; Meder 1919, p. 134 n.2

Pastels

J.299.101 Comets, pstl/ppr bl., 64x52 (Bologna, Università, Museo della Specola, inv. MdS 124a) ϕ



J.299.103 Paraselene and parhelion, pstl/ppr bl., 64x52 (Bologna, Università, Museo della Specola, inv. MdS 124b) ϕ



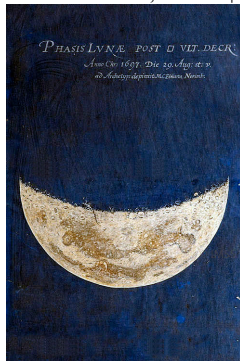
J.299.105 Full Moon, pstl/ppr bl., 64x52 (Bologna, Università, Museo della Specola, inv. MdS 124c). Exh.: Florence 2009, no. VII.3.2; Baltimore 2023, no. 161 ϕ



J.299.107 Phase of the Moon, observed 16.IV.1697, pstl/ppr bl., 64x52 (Bologna, Università, Museo della Specola, inv. MdS 124d) ϕ



J.299.109 Phase of the Moon, observed 29.VIII.1697, pstl/ppr bl., 64x52 (Bologna, Università, Museo della Specola, inv. MdS 124e). Exh.: Florence 2009, no. VII.3.2; Baltimore 2023, no. 162 ϕ



J.299.111 Phase of Mercury, observed by Johannes Hevelius, 1694–96, pstl/ppr bl., 64x52 (Bologna, Università, Museo della Specola, inv. MdS 124f) ϕ



J.299.113 Phase of Venus, pstl/ppr bl., 64x52 (Bologna, Università, Museo della Specola, inv. MdS 124g). Exh.: Florence 2009, no. VII.3.2 ϕ



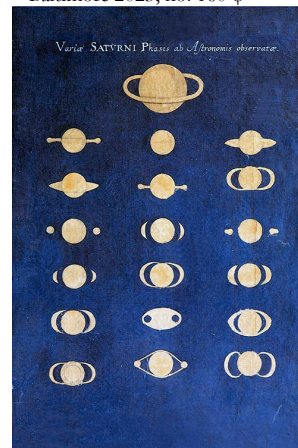
J.299.115 Aspect of Mars, pstl/ppr bl., 64x52 (Bologna, Università, Museo della Specola, inv. MdS 124h) ϕ



J.299.117 Aspect of Jupiter, pstl/ppr bl., 64x52 (Bologna, Università, Museo della Specola, inv. MdS 124i). Exh.: Florence 2009, no. VII.3.2; Baltimore 2023, no. 159 ϕ



J.299.119 Aspect of Saturn, pstl/ppr bl., 64x52 (Bologna, Università, Museo della Specola, inv. MdS 124j). Exh.: Florence 2009, no. VII.3.2; Baltimore 2023, no. 160 ϕ



J.299.121 3 smaller astronomical studies, pstl/ppr br., (Bologna, Università, Museo della Specola, inv. MdS 83a–c) ϕ

