

# Neil Jeffares, *Dictionary of pastellists before 1800*

## Online edition

### DROUAI, François-Hubert

Paris 14.XII.1727–21.X.1775

Studied with his father Hubert (*q.v.*) and with Nonnotte, Van Loo, Natoire and Boucher. Probably the Drouais awarded third prize at the école de l'Académie royale in .1.1745; first prize in 1748; *agrée* in 1755, *reçu* 1758; conseiller 1774. He was successful at court, and his social and artistic celebrity withstood Diderot's disapproval of his superficiality. As a painter of children he was unequalled (although there are clear influences, e.g. in his portrait of the young Mlle Helvétius, c.1755, drawing on Carle Van Loo's oils of Rosalie, the future Mme Bron), and he executed a wide range of paintings of young ladies in mythological roles. There is a distinctive flat lighting on the forehead and nose of his faces, combined with a good sense of colour and a sure line.

Under his father's guidance, it is to be expected that François-Hubert would have executed a number of pastels, although in practice few if any autograph pastels have survived among the numerous lists of copies of his paintings and other drawings attributed to this fashionable name. Among these are probably suave works by pastellists such as Lenoir or possibly the similarly elusive Vestier.

#### Bibliography

Bellier de La Chavignerie & Auvray; Bénézit; Dumont-Wilden 1909; Gault de Saint-Germain 1808, p. 288f; Colin Harrison, in Grove 1996; Hugues 1999; Hugues 2003; Lemoine-Bouchard 2008; Mariette 1851–60; Ottawa 2003; Ratouis de Limay 1946; Sanchez 2004; Saur; Toledo 1975; Wildenstein 1966; Wright 1992

GENEALOGIES [Drouais](#)

#### Pastels

J.2818.101 Mme BAVARD, a young girl in coiffure Lamballe, bust length, facing, right hand resting on an urn, pstl, 62x51 ov. (Walker; New York, Parke Bernet, 1972, Lot 107 attr.)

J.2818.102 Auguste-Camille de BRANCAS Lauraguais (1761–1829), bâtard du comte de Lauraguais et de Sophie Arnould, pstl, ov. (maison de Sophie Arnould à Luzarches; famille Gilbert-Boucher; desc., Paris PC 2006) [new attr., ?] φαν



J.2818.104 Alexandrine-Sophie de BRANCAS Lauraguais, Mme Pierre-Nicolas André, dit Murville, puis Mme Barthélémy-François Sandrin (1767–1801), fille illégitime du comte

de Lauraguais et de Sophie Arnould, pstl, ov. (maison de Sophie Arnould à Luzarches; famille Gilbert-Boucher; desc., Paris PC 2006) [new attr., ?] φαν



Pierre-Marie-Gaspard GRIMOD, comte d'Orsay (Bayonne, collection Gramont, inv. 60) [v. Valade]

J.2818.107 La princesse de LAMBALLE, née Marie-Thérèse-Louise de Savoie-Carignan (1749–1792), pstl, 58x48, c.1770 (Geneva, Christin & Naville, 5.X.1999, Lot 43 n.r., attr., est. SwFr1500–1800) [attr.]

J.2818.108 La princesse de LIGNE [née Françoise-Marie-Xavière, princesse de Liechtenstein (1739–1821)], pstl, ov. (Élie Lantz a.1945). Lit.: *Répertoire des biens spoliés*, item 113, OBIP no. 40.597 n.r. [cf. Ducreux]

[??] LOUIS XVI; & pendant: [??] comte de Provence, enfant, pstl/ppr, 40x32 (Milan, Finarte, 8–9.VI.1983, Lot 640.A/B, as by F.-H. Drouais. Milan, Il Ponte, 14.III.2012, Lot 293) [v. *Éc. fr.*]

Le marquis Jean-Georges-Louis-Marie Le Franc de POMPIGNAN (Bayonne, collection Gramont, 61) [v. Valade]

J.2818.112 La comtesse de SIMANE [née Diane-Adélaïde de Damas], en robe rose, pstl, 63x52 ov. (New York, Christie's, 11.I.1979, Lot 47 repr., attr., \$2000) φαδ



J.2818.114 Enfant et son chien, pstl/ppr, 56x45, 1766 (Vannes, Ruellan, 15.II.2003, Lot 11 n.r., €6000)

J.2818.115 Jeune prince, pstl (François-Martial Marcille; vente p.m., Paris, Pillet, 4–7.III.1857, Lot 208 n.r., par “Drouais”) [pwhich Drouais]

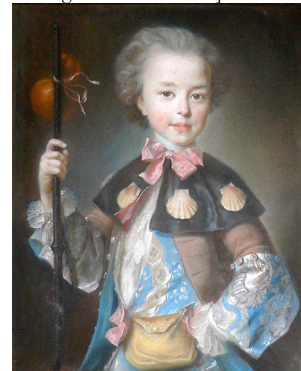
J.2818.116 Un lieutenant-général des armées du roi, buste, en armure, la tête de ¾ à g., pstl ov. (Auguste Vitu; vente p.m., Paris, Drouot, Motel, 30.XI.–4.XII.1891, Lot 361 n.r., attr.)

Enfant (Paris, Petit, 23–25.V.1921, Lot 26, as F.-H. Drouais) [v. *Greuze*]

*L'enfant aux cerises* (M. S.; Paris, Drouot, 12.V.1937, Lot 108, *Éc. fr.*, ?attr. Drouais) [v. *Greuze*]

J.2818.118 Jeune homme, pstl, 61x50 (Paris, Ader, Picard, Tajan, Drouot, 28.II.1973, Lot 17 n.r., Fr10,000)

J.2818.119 L'enfant au bourdon, pstl/ppr, 62x50 (Albert Lehmann 1901; Paris, Georges Petit, 8.VI.1925, Lot 180 repr., as by Hubert Drouais, Fr19,000; Hugues Citroën. Monsieur H...; Paris, Galerie Jean Charpentier, 24–25.V.1935, Lot 39 n.r., as by Hubert Drouais, est. Fr4000, Fr3200; Le Leq de Kerland. Paris, Galliera, Ader, 26.V.1972, Lot 1, as by Hubert Drouais, Fr45,000; Paris, Ader, Picard, 22.VI.1990, Lot 109 repr., Fr450,000; French PC 2006). Exh.: Paris 1897, no. 49; Paris 1901, no. 54; Paris 1908a. Lit.: Moreau-Vauthier 1901, p. 243 repr., as Drouais; Jeffares 2006, p. 356biii repr., attr. M. Loir [??; ??Drouais; cf. Pougin de Saint-Aubin] φασ



~cop., pnt. (Paris art market 2001). Lit.: *L'Estampille*, .XI.2001, ?XIX<sup>e</sup>, repr.

=?cop., pnt., 40x31 (Lille, Mercier, Velliet, Thulliet, 19.XII.1993, Lot 74 repr.)

J.2818.123 Young man, pstl/ppr, 28x20 (Morris Plains, Dawson's, 16.X.1999, Lot 435 n.r., attr., est. \$800–1200, \$800) [attr.]

J.2818.126 Dame en bleu, pstl, 63x51, sd 1758 (Baron E. Léonino 1933; 2e vente p.m., Paris, Drouot, Baudoin, Ader, 14.IV.1937, Lot 5 n.r., attr. H. Drouais)

*Jeune femme avec ruban bleu au col* (Boston, M.F.A., Forsyth Wickes; Bourgeois sale, 15–16.VI.1927, Lot 79, atelier de Drouais) [v. *Éc. fr.*]

J.2818.128 Femme allaitant son enfant, pstl/ppr, 81x64.8 (Tours, mBA, inv. 1924-301-20. La comtesse de Trobriand de Keredern, née Aimée-Adélaïde de La Rochefoucauld-Bayers (1811–1895); legs). Lit.: Paolo Bassani Pacht & al., *Dessins du musée des Beaux-Arts de Tours XVI<sup>e</sup>–XVIII<sup>e</sup> siècles, en contrepoint de 'Disegno et couleur'*, 2013, p. 38 repr. [attr.] φα



J.2818.129 ~version, pstl, 82x65 (Alfred Forgeron (1842–?1910). Vendôme, Rouillac, 7.VI.2015, Lot 103 repr., atelier de F.-H. Drouais, est. €4–6000) φβ



J.2818.1295 =?/version, femme en peignoir blanc, vue de face, assise dans un fauteuil bleu, allaitant un enfant, pstl, 80x65 pstl (Mme veuve Lenoir; vente p.m., Paris, Drouot, Boussaton, Pillet, 18.V.1874, Lot 96 n.r., éc. fr.)

J.2818.131 Jeune femme, pstl (X...; Paris, 1864, H280)

J.2818.1315 Petite fille tenant une poupée, costume Louis XV, pstl (Paris, Drouot, Lechat, 17.II.1868, Lot 93 n.r.) J.2818.132 Jeune femme en costume Louis XV, pstl (marquis de Monglas; Paris, Drouot, Oudart, 18.XII.1874, Lot 16 n.r.)

*Dame en rose* (marquise de Ganay, Paris, 1909). Exh.: Paris 1908a, no. 14, no pl. Lit.: Brieger 1921, repr. p. 122; MacFall 1909, attr. [v. La Tour]

*Dame* (Yves Le Moine; Paris, Drouot, 5.II.1912, Lot 38 repr., attr.) [v. Éc. fr.]

J.2818.134 Damenportrait, pstl, 64x53 (Galerie Heinemann, 14.VIII.1912, DM7000; Frau G. Wertheim & Fray Wolf Wertheim, Berlin-Meran). Lit.: heinemann.gnm.de database n.r.

J.2818.135 Femme, la tête légèrement inclinée vers la dr., en corsage bleu décolleté à manches courtes et agrémenté d'une ruche de dentelle, 65x53 ([Camille Groult]; Paris, Georges Petit, 21–22.VI.1920, Lot 2 n.r.)

*Dame* (Henrici; Berlin, 11.VI.1925, Lot 257 repr. Kaufman; Luzern, Fischer, 18–21.V.1938, Lot 1986) [v. Frey]

J.2818.136 Jeune femme en robe bleue, coiffée de perles; & pendant: J.2818.1361 jeune femme en robe blanche, coiffée de perles, pstl, 56x43 (New York, Plaza Art Galleries, O'Reilly, 27.II.1931, Lot 38 n.r., attr.) [??attr.]

J.2818.137 Tête de jeune fille, pstl, 25x18.9 (Franz Wilhelm Koenigs (1881–1941), Haarlem, FI 269). Exh.: Rotterdam 1934, no. 52; Paris 1937a, no. 528 n.r.

J.2818.138 Lady, half length, turned to left, pstl, 61x51 ov. (Sir Chartres Biron; London, Sotheby's, 19.VI.1940, Lot 34 n.r.)

*Jeune femme lisant une lettre* (Milan, Finarte, 25.X.1988, Lot 46 repr.) [v. Allais]

J.2818.141 Femme au voile, pstl, 57.8x46.7 ov., inscr. verso "Collection du comte de Choiseul. Attribué à Nattier" (London, Sotheby's Olympia, 13.XII.2001, Lot 374 repr., Éc. fr., est. £1200–1800, £5875). Attr. Φαα



Photo courtesy Sotheby's

*Fillette* (Paris, Drouot, Tajan, 23.XI.2001, Lot 126 repr., attr. F.-H. Drouais) [v. Éc. fr.]

J.2818.145 Jeune seigneur; & pendant: J.2818.146 fillette, pstl (Louis Singer 1901). Exh.: Paris 1901, no. 57/58

J.2818.175 Portrait, pstl. 58x47 (Laluyé; Paris, Drouot, Delbergue-Cormont, 12–13.II.1868, Lot 68 n.r., H90)

#### Anon. related pastels

Charles-Philippe, comte d'ARTOIS (1757–1836) et Madame Clotilde (1759–1802), enfants, pnt., sd 1763 (Louvre inv. 4114)

~grav. Beauvarlet (FD 106)

~repl., pnt. (MV 3898)

J.2818.149 ~cop., pstl, 98x71 (Chester, Bonhams, 15–17.III.2011, Lot 474 repr., as follower of H. Drouais, est. £3–5000; Chester, Bonhams, 5.VII.2011, Lot 490 repr., est. £1500–2000. PC, The Grange, Wendover; Woolley & Wallis, 2.X.2024, Lot 22) φκ



J.2818.151 ~cop., pstl, 85x68.5 (Rancho Santa Fe, McNally's, 22.VI.2014, Lot 353 repr., est. \$900–1800) φκ

J.2818.153 ~cop., pstl, 97x77 (Cergy-Pontoise, Aponem, 22.VI.2015) φκ

J.2818.154 ~cop., pstl, 25x40 (Paris, Drouot, Coutau-Begarie, 22.II.2017, Lot 28 repr., est. €3000–3500) φκ

J.2818.155 Charles-Philippe, comte d'ARTOIS, enfant, pstl, 39x27 (Nogent-lès-Montbard, de Vregille-Bizouard, 27.I.2007, Lot 192 repr., éc. fr., ?comte d'Artois, est. €500) φκ



Le château de cartes a/r F.-H. Drouais, comte d'ARTOIS; & pendant: Les bulles de savon, a/r F.-H. Drouais, Madame Clotilde ~cop., pstl, *La Touche Loisi*, q.v.

J.2818.158 J.2818.16 ~cop., pstl, 64x54, inscr. "Leprince 1763" (Bordeaux art market 2013) [new attr., ?; cf. Mme Laperche] φ



Jeune garçon au tricorne, pnt., 65x54 ov. (Louvre RF 1977-14. Legs Mlle Edith Blum 1976)

J.2818.164 ~version, ?Alexandre-Marie-François-de-Paule de DOMPIERRE D'HORNOY (1742–1828), petit-neveu de Voltaire, pstl (Ferney). Lit.: Henry Matthews, *Diary of an invalid*, London, 1820, p. 359, "very prettily done in crayons"; Étienne de Jouy, *L'Ermitte en province*, XCII, 1822, p. 450 n.r., anon., inconnu, le petit ramoneur du château de Ferney; Choudin 1994, fig. 15; Apgar & al. 1999, pl. IX, ?attr. Mme Dompierre; Paolo Bassani Pacht & al., *Dessins du musée des Beaux-Arts de Tours*, 2013, p. 40 repr. [attr.] φαδβγ



J.2818.166 ~version, pstl (France PC 2006) φ





?Marie-Jeanne DORE (1736–p.1769), tenant une rose, pnt., ov., s “M<sup>lle</sup> Doré” on parapet (V&A, inv. 600-1882. Legs John Jones). Exh.: Tokyo 2011, no. 25, as by Marie-Jeanne Doré; V&A display, Room 90, 2012–13, as by F.-H. Drouais, of Marie-Jeanne or sister, Mme Drouais. Lit.: C. M. Kauffmann, “Victorian and Rococo”, *Apollo*, .III.1972, pp. 184f, as by Marie-Jeanne Doré; Greer 2001, repr. p. 264; Vallayer-Coster 2002, p. 84

~cop., pnt., ov. (Government Art Collection)  
~cop., pnt., ov. (London, Sotheby’s, 1.XI.2007, Lot 193)

J.2818.171 ~cop., early 20<sup>th</sup> century, pstl, 62x49.5 (Bladon Castle, Burton-on-Trent. Basil Dighton; New York, Parke-Bernet, 6–7.v.1952, Lot 235 repr., as John Russell, as of [??]Miss Felicity Page. Haussner. Timonium, Maryland, Richard Opfer Auctioneering, 12.X.2017, Lot 86 repr., est. \$800–1200). Lit.: Jeffares 2006, p. 157Bi, as by Marie-Jeanne Doré [new attr.] Φπδν



Photo courtesy Sotheby’s

J.2818.174 ~cop., pstl, 66.5x59 ov. (Saint-Germain-en-Laye, Laurent, Schmitz, 4.X.2009, Lot 39 repr., éc. fr., est. €500–600. Saint-Germain-en-Laye, Laurent de Rummel, Savidan, 26.VI.2021, Lot 13 repr., éc. fr., est. €850–900) φαδν



J.2818.175 ~cop., pstl, 50x44.5 ov. (Ayr, Thomas R. Callan, 3–4.XII.2021, Lot 533 repr., late 19<sup>th</sup> century, unidentified, est. £100–150; Glasgow, McTear’s, 27.IV.2022, Lot 392 repr., as manner of Russell, unidentified, est. £400–600) φαδν

J.2818.176 ~cop. James Wells Champney, pstl, 65.5x53 ov. (Hawthorn, Victoria Australia, Leonrd Joel. 29.IV.2024, Lot 112 repr.) φκ

Mme DU BARRY, en habit de chasse, pnt., Salon de 1769 (disparu)

~grav. Beauvarlet

J.2818.178 ~cop., 33x27 ov. (Rennes, Livinec Gauducheau Jezequel, 2.XII.2001, Lot 24 repr., inconnue, avec pendant Louis XVI, a/r Hall, q.n.) φκ



J.2818.179 ~cop., 39.5x31.5 (Paris, Ader, 21.XI.2023, Lot 47 repr., inconnue, est. €200–300) φκν



J.2818.18 ~cop., sans habit, pstl/pchm, 40.1x32 (London, Phillips, 6.XII.1995, Lot 201 repr., est. £700–900) φκ



Mme DU BARRY en Flore, pnt. (Agen, mBA)

J.2818.183 ~cop. (head), Jeune femme, pstl, 45x30 (PC Deux-Sèvres; volé .III.2005). Lit.: *Gazette Drouot*, 8.IV.2005, repr. p. 165, anon., inconnue φκ



*Grimod, v. Le Franc*

[La comtesse de GRIMOD, née Marie-Louise-Albertine-Amélie de Croÿ (1748–1772)]

[??]Mme Jean-Jacques Le Franc de Pompignan (∞ 1757), née Marie-Antoinette-Gabrielle-Félicité de Caulaincourt (c.1731–p.1772), veuve de Pierre Grimod Durfort d’Orsay, en sultane tenant son chien, pnt., c.1772

~version, en robe bleue, pnt., 55x45 ov. (Nicolle 1920. Trotti, Paris). Exh.: Copenhagen 1920, Museum of Fine Art, cat. Madsen, no. 81

~version, en robe blanche, manteau rouge doublé de fourrure, tenant une lettre (PC 2023)

~version, in exotic costume, pnt., ov. (Caulaincourt, château, as of de Caulaincourt). Lit.: Salmon 2018, fig. 15

J.2818.185 ~cop., pstl, 70x56 ov., cadre inscr. de Croÿ (Louvre inv. 25044; dep.: Palais Bourbon; not located since 1946. Acqu. a.1824; inv. 1815–24, no. 37, anon., princesse de Croÿ, Chalcographie royale). Lit.: MacFall 1909, repr.; Monnier 1972, no. 35, attr. Boze; Boze 2004, p. 147 n.r., ??Boze; Jeffares 2006, p. 478 repr., attr. Saint-Michel, all as of Mme Grimod d’Orsay, née Marie-Louise de Croÿ (1748–1772); Sophie Join-Lambert & Anne Leclair, *Joseph-Benoît Savée (1743–1807)*, Paris, 2017, p. 383; Salmon 2018, no. 49 repr., as a/r Drouais; [Jeffares 2018g](#) φκδ



*Le Franc, v. Grimod*

MARIE-ANTOINETTE (1755–1793), en Hébé, pnt., 1773 (Chantilly 395)

~version, pnt. (V&A inv. 529-1882)

J.2818.187 ~cop., pstl, 61x48 (Wadebridge, Cornwall, Lambrays, 4.X.2004, Lot 643 repr., anon. Leominster, Brightwells, 27.IV.2005, Lot 25 repr., manner of Pesne, est. £1200–1500) φκ



MARIE-ANTOINETTE, dauphine, buste, to right, eyes looking to left, low-cut chemise showing partly nude bust, powdered hair brushed back from forehead, falling in ringlets to her shoulders

J.2818.19 ~version, pstl/ppr, 30x25.4 ov. (William Hoare, RA. Francis Wellesley, cat. no. 891; London, Sotheby’s, 28.VI.1920 & seq., Lot 243 n.r., as by F.-H. Drouais)

La comtesse de MUN, née Élisabeth-Charlotte-Geneviève Helvétius (1752–1799), enfant, tenant des raisins, pnt.

J.2818.192 ~cop., pstl, 76.2x63.5 ov. (New York, Christie's, 26.III.1987, Lot 50 repr., sch. F.-H. Drouais, est. \$2–4000) φ



Photo courtesy Christie's

J.2818.195 MARIE-ANTOINETTE, in vari-coloured dress, pearl necklace, pstl, 65x53 ov. (London, Christie's, 6.II.1931, as autograph, 6 gns; Burton Jones)

La marquise de MONTESQUIOU-FEZENSAC, née Jeanne-Marie Hocquart de Montfermeil (1743– ), et sa fille, Anne-Louise-Hyacinthe-Augustine de Montesquiou-Fezensac (1761–1823), future marquise de Lastic; & pendant: ses fils, Anne-Pierre-Élisabeth, comte de Montesquiou-Fezensac (1764–1834), et Henri, vicomte de Montesquiou-Fezensac (1768–1844)

J.2818.198 ~cop., Girl sitting at a dressing table with her mother, pstl, 73.5x63 ov.; & pendant:

J.2818.199 Boy dangling a bubble over his brother's head, pstl, 75x61 ov. (London, Phillips, 7.VII.1993, Lot 91 repr., German sch., est. £3–5,000, £3600) φκ



Mme de POMPADOUR, pnt. (London, National Gallery. Rothschild 1874; Mentmore; acqu. 1977)

J.2818.203 ~cop., pstl, 45x37 ov. (M. & Mme Pierrotet, Paris; seized ERR 1942, inv. Pierre G; sent: Buxheim; restituted) φκ



J.2818.205 ~cop., Jacques-Joseph Vidal, XIX<sup>e</sup>, pstl, 46.5x30.5 ov., s v "J. Vidal" (Agen, mBA, inv. 27Ai. Château d'Aiguillon; Agen, salon de la préfecture 1891; acqu. 1905). Lit.: *Inventaire général des richesses d'art de la France*, 1891, v, p. 286 n.r., as cop., Ratouis de Limay 1946, p. 173, autograph étude, *olim* collection d'Aiguillon [??] φκ



J.2818.208 ~dame avec écharpe blanche, ruban bleu, pstl (Poitou PC) φκ



Louis-Stanislas-Xavier, comte de PROVENCE (1755–1824); & pendant: comtesse, née Marie-Joséphine-Louise de Savoie (1753–1810), pnt. ~grav.

J.2818.213 ~cop., pstl, 39x31 (PC, Bordelais; Paris, Artcurial, 18.XI.2014, Lot 151 repr. display only, est. €700–900) φκ

J.2818.215 [Comte & comtesse de PROVENCE], ??Charles-Philippe, comte d'ARTOIS (1757–1836), 40x31.5; & pendant: J.2818.216 comtesse, née Marie-Thérèse de Savoie (1756–1805), 40x31.5 (Henrici; Berlin, 11.VI.1923, Lot 257 repr., as éc. fr., of comte et comtesse d'Artois) φκ



La comtesse de PROVENCE avec une rose, pnt., 1771 (Draguignan, musée municipal). Lit.: Boze 2004, p. 99, fig. 31

J.2818.22 ~cop., head and shoulders, pstl (Venice, Semenzato, 9.XI.2003, Lot 67 repr., inconnue, circle of J.-B. Van Loo, est. €6–8000) [cf. Saint-Michel] φκ



J.2818.222 ~pastiche with La Tour, Marie-Josèphe, à l'éventail, pstl, 70x53 (Schwerdt; New York, Anderson, 25.IV.1928, Lot 42 repr.). Lit.: Jeffares 2006, p. 601Civ, éc. fr. φπ



J.2818.224 STANISLAW LESZCZYŃSKI, cr. clr, 15x13 ov. (marquis de Valori; vente p.m., Paris, Drouot, Lair-Dubreuil, 25–26.XI.1907, Lot 45 n.r., ff145; Damblanc) [??attr.]

Mme Michel-Jacques TURGOT DE SOUSMONT, née Gabrielle-Élisabeth Galland (–1791), pnt.,



80x63, sd 1766 (baronne Cassel van Doorn, Paris, Galerie Charpentier, 30.V.1956, Lot 31, repr. pl. xvi)

J.2818.225 ~cop., pstl, sd 1856 (Bourg-en-Bresse, 24.X.1993, Lot 87 repr.) φκ

J.2818.226 ~cop., pstl, 79x62 (Paris, Drouot, Millon, 28.X.2005, Lot 38 repr, est. €3–4000) φκ



Le jeune élève, ou le jeune dessinateur, pnt. (Mme de Pompadour, inv. p.m. 1764, no. 93, with pendant). Lit.: Versailles 2002, pp. 191ff =?pnt. (Mame)

~cop., Cazotte tapestry. Exh.: Versailles 2002, no. 60 repr.

J.2818.231 ~?cop., pstl, 61x48 (London, Sotheby's, 12.VI.1929, £60; Stenman)

J.2818.232 ~cop., pstl, 61x48.5 (Stockholm, Bukowskis, 25.IX.1929, Lot 98 repr.; Goudstikker, Amsterdam, exh. .IV.–.V.1930; Van Beuningen collection, Rotterdam). Lit.: *Connoisseur*, XLV, .VI.1916, repr. cvr φκ



Photo courtesy Bukowskis

J.2818.235 ~cop., pstl, 50.5x40.5 (Paris, Drouot, Wapler Mica, 16.III.2009, Lot 20 n.r., est. €300–350) φκ



J.2818.236 ~cop., pstl, 62x50 ov. (Tyler, Elephant & Castle; acqu 1935. Berwick House, Shropshire; Newbury, Dreweatts 1759, 27.V.2021, Lot 65 repr., with pendant J.2818.2435, as by Drouais) φκν

Jeune femme au chat, pnt., sd "Drouais le fils/1763", Salon de 1763 (Mme de

Pompadour, inv. p.m. 1764, no. 93, with pendant PC 2002). Exh.: Versailles 2002, no. 59 repr.

J.2818.238 ~cop., pstl, 67.5x55 (A & C Fink; Sydney, Christie's, 30.IV.2002, Lot 138 repr., suiveur de Greuze, est. A\$7000–9000) φκ



Photo courtesy Christie's

J.2818.241 ~cop., pstl, 65x53 ov., inscr. verso "le pendant du petit Garçon" (London, Phillips, 23.VI.1987, Lot 125 repr., est. £1000–1500) φκ



J.2818.243 ~cop., pstl, 63.5x51.5 ov. (Paris, Drouot, David Kahn, 29.XI.2006, Lot 63 repr., est. €600–800) φκ



J.2818.2435 ~cop., pstl, 62x50 ov. (Tyler, Elephant & Castle; acqu 1935. Berwick House, Shropshire; Newbury, Dreweatts 1759, 27.V.2021, Lot 65 repr., with pendant J.2818.236, as by Drouais) φκν

Fillette en robe rose, m/u

J.2818.244 ~cop., pstl (Paris, Drouot, Chevallier, 28.V.1897, Lot 81 n.r., a/r Drouais)

J.2818.245 Deux enfants jouant, l'un tenant une trompette et l'autre un oiseau, pstl, 63x52.5 ov. (Paris, Drouot, Kahn-Dumoussset, 10.VII.2015, Lot 9 repr., éc. de Drouais, est. €1000–1500) φκ

