

Neil Jeffares, *Dictionary of pastellists before 1800*

Online edition

Danish School

Named sitters

J.83.1001 Fru [Fredrik Phillip Carl August] BARTH, née Anna Chatrine Bruun Meyer (1781–), pstl/ppr, 50x42 ov. (Erik Brandt. Copenhagen, Havnen, Bruun Rasmussen, 17.V.2021, Lot 189 repr., sch. of Juel, est. DKr6–8000) φ



J.83.1002 [Fru Poul Danchel BAST, née] Charlotte Louise Iversen (1752–1783), pstl/card, 37x30 ov. (Hannover, HannoVerum, 27.IV.2013, Lot 2 repr., est. €1000) φ



J.83.1003 Fru BOICKE, née Caroline Wilhelmine Gerhardine Henriette Schomer (1785–1822), pstl, 37x28 ov., inscr. *verso* name in German, [c.1805] (Helsinki, Bukowski Hörhammer, 12.XII.2006, Lot 191 repr., est. €4000–4500, €4600) [cf. Hornemann] φ



J.83.1004 [?]Biskop BRIAND DE CRÈVECOEUR, pstl, 23x17.5, inscr. *verso* (Copenhagen, Lyngby, Bruun Rasmussen, 13.I.2024, Lot 127 repr., est. DKr3000) φδ



J.83.1005 Fru C. R. BRODERSEN, née Caroline Christine Wurling, pstl, 17x15, inscr. *verso* 1800 (Copenhagen, Bruun Rasmussen, 5.III.2003, Lot 1617 repr., est. DKr3000) φ

J.83.1007 CAROLINE MATILDA, dronning af Danmark 1766, née Princess of England (1751–1775), pstl, 64x50, rounded corners, c.1770 (Frederiksborg, Nationalhistoriske Museum, A4540). Lit.: Frederiksborg kat. 1943, no. 4957 n.r.

J.83.1008 CHRISTIAN VI, konge af Danmark (1699–1746), m/u (Amtmand Magnus Theistes; Copenhagen, 19.III.1792, Lot 1, with Dronning Sophie Magdalene)

J.83.1009 Young boy in brown coat, ?CHRISTIAN VII, konge af Danmark (1749–1808), pstl. 60x40 ov. (Halle, Saale, Antiquätengalerie Oben) φ



J.83.1011 Gentleman; & pendant: **J.83.1012** lady, of the ?CONINCK family, pstl/ppr, 36x29 (Bredgade, 22.XI.2006 & seq., Lot 2447, Danish sch., 18th century, est. €1300–1600) φ



J.83.1015 FREDERIK VI, konge af Danmark (1768–1839), pstl/ppr, 44x32, p.1784 (Reventlow-Museet, 16)

J.83.1018 FREDERIK VI, konge af Danmark, as a baby, seated on satin upholstered chair, lace bonnet and robe with wide sash, small dog on lap; order of the Elephant draped behind, pstl, 54.8x43.5 (Royal Collection RCIN 451649)

J.83.1019 FREDERIK VI, konge af Danmark, pstl/ppr, 44x33 (Vejele, Bruun Rasmussen, 7.VIII.2001, Lot 1020 repr., est. DKr2000) φ

J.83.1023 Gravin van HOGENDORP, née Margaretha Johanna Munter (1752–1803), pstl, 61.7x50 ov., ?Tilburg, c.1778–90 (?s Hertogenbosch, Nordbrabants Museum, inv. 12674). Pseudo-pendant to Piot φ



J.83.1025 Nicolai Jacob JESSEN (1718–1800), k ammerer ved  resunds Toldkammer; & pendant: **J.83.1026** spouse, n e Maria Christina Jacobi (1737–1801), c.1790 (Helsing r Bymuseum) φ



Photos courtesy Helsing r Kommunes Museum

J.83.103 Dorothea KAAS, pstl, ov., 1794 (Helsing r Bymuseum) φ

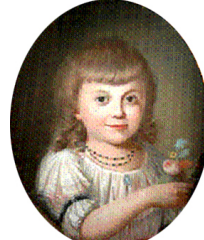


Photo courtesy Helsing r Kommunes Museum

J.83.1033 Hofarkitekt Anders KIERKERUP (1749–1810), pstl, 54x46, c.1800 (Copenhagen, Bymuseum, F 94. Don 1904).

J.83.1034 Christoffer Nicolaj Nobel von N RAGGER (1751–1807); & pendant: **J.83.1035** Fru, n e Christine Caroline Wilhelmine Ronne (1757–1818), pstl, 64x50 ov. (Ive Antique, Copenhagen). Lit.: Weltkunst, 1981, p. 1786 repr., as sch. of Jens Juel [cf. Noragger] φ



J.83.1038 Frederick Louis NORDEN (1708–1742), FRS, captain in the Danish navy, pstl (Edwd: Jeffrey, Pall Mall, 1793)

~grav. Barrett 1793, published Edward Jeffrey
J.83.104 Anna Margrethe, madam SCHALL (1775–1852), danserinde ved Det Kongelige Teater, friend of Hans Christian Andersen, pstl/ppr, 44x36, [c.1800] (Havnen, Bruun Rasmussen, 29.IX.2010, Lot 1023 repr., attr. Hornemann, est. DKr6000) φ



J.83.1042 SOPHIE MAGDALENE, dronning af Danmark, n e von Brandenburg-Culmbach (1700–1770), m/u (Amtmand Magnus Theistes; Copenhagen, 19.III.1792, Lot 1, with Kong Christian VI) [?sch.] φ

J.83.1043 Man of the ?TROILE family; & pendant: J.83.1044 woman, pstl, 50x42, c.1800 (Copenhagen, Museumsbygningen Kunstauktioner, 29.XII.2006, Lot 42 repr., est. DKr10–15,000; Copenhagen, Museumsbygningen Kunstauktioner, 28.II–2.III.2006, Lot 51 n.r./repr., est. €6–8000) φ

J.83.1047 Mme VANDBORG, plus tard Mme Aggersborg, née Magdalene Haahr, pstl/pchm, 39x31 ov., c.1780 (Viborg, Skovgaard Museet, 10.286. Don 1972). Danish sch., c.1780 φ



Photo courtesy Skovgaard Museet

Unknown men

J.83.1051 Boy in blue coat with red collar, pstl, 40x30 ov. (Bremen, Bolland & Marotz, 8–9.IV.2005, Lot 547 repr., English sch., est. €620) [?cf. Juell] φ



J.83.1053 Boy in blue coat with white collar, pstl, 37x28 ov. (Copenhagen, Museumsbygningen, 30.V.–6.VI.2006, Lot 219 repr., c.1800, est. €2000) [?cf. Juell] φ



J.83.1054 Man in a brown coat, holding a letter, pstl, 77x52 (Copenhagen, Havnen, Bruun Rasmussen, 27.IV.2013, Lot 116 repr., est. DKr2000; Copenhagen, Havnen, Bruun Rasmussen, 8.II.2019, Lot 97 repr., est. DKr2000) φ



J.83.1055 Young man in a grey coat, pstl, 38x32 (Copenhagen, Bruun Rasmussen, 1961, auction 127, Lot 348; 1962, auction 143, Lot 72, as by Darbes; Copenhagen, Havnen, Bruun Rasmussen, 2.X.2017, Lot 74 repr., as 18th century, ?self-portrait, est. DKr6000) φ



Unknown women

J.83.1058 Ung pige i pelskåbe og tylskyse mer blåt bånd, pstl, 61x45 (Copenhagen, Bruun Rasmussen, 10.IX.2003, Lot 1926 repr., English sch., est. DKr4000) φ

J.83.106 Jeune femme, pstl, 36x28.5 ov., c.1800–10 (Paris, Aguttes, 19.XII.2008, Lot 215 repr., Éc. fr., *olim* attr. Gérard) [?same hand as Fru Boickej] φ



J.83.1062 Girl with blue ribbon in her hair, pstl/ppr, 32x25 (Havnen, Bruun Rasmussen, 14.IX.2011, Lot 1114 repr., est. DKr2–3000) φ



Unknown pendants

J.83.1065 Officer; & pendant: J.83.1066 woman wearing hat with flowers, pstl (Løvenborg, Winkel & Magnussen auction 240, 1938, Lots 190/191. Bredgade, Bruun Rasmussen, 10.XII.2003, Lot 1372 repr., as Lundberg, est. DKr15–25,000) φ

J.83.107 Officer; & pendant: J.83.1071 his wife, pstl, 48x38 ov.; & J.83.1072 their son, pstl, 42x34 ov. (Copenhagen, Havnen, Bruun Rasmussen, 25.IX.2017, Lot 21 repr., as Lundberg, est. DKr6000) φ

