

Neil Jeffares, *Dictionary of pastellists before 1800*

Online edition

COYPEL, Antoine

Paris 11.IV.1661–7.I.1722

Antoine Coypel was a pupil at the Académie royale from 1676; *agréé* 1681, *reçu* 1682; with the support of the Regent, he rose to be premier peintre du roi in 1715. He presented Rosalba Carriera (*q.v.*) to the Académie during her Paris trip in 1720–21. His own use of pastel was rare, although 15 pastel heads were recorded in his inventaire après décès; like the surviving pastels, they were probably three-chalk drawings heightened with pink pastel. Many of these are studies of children, and the spontaneity he brought to their treatment gives a strongly dix-huitième feel to his work. The distinctive lighting of these works, which seems to come from below, is accounted for by the intended use of the studies for decorative ceiling compositions. The drawings are understandably confused with those of his son Charles-Antoine (*q.v.*).

Bibliography

Bellier de La Chavignerie & Auvray; Bénézit; Garnier 1980–84; Garnier 1989; Grove; Lemoine-Bouchard 2008; Mariette 1851–60; Monnier 1983; Nantes 1997; Rambaud 1965, I, pp. 138f; Ratouis de Limay 1946; Sanchez 2004; Saur; Toledo 1975

GENEALOGIES *Coypel*

Pastels

J.246.101 Tête de Laban, pstl, pierre noire, 36.1x26.4, 1697 (Karlsruhe, Staatliche Kunsthalle, inv. 1978-6). Lit.: Prat 2013, fig. 1476 φ



J.246.103 Tête de garçon, 14.4x14.7 (Louvre inv. 25878. Cabinet du roi). Exh.: Paris 1949, no. 12; Paris 1958b, no. 5; Lausanne 1963. Lit.: Guiffrey & Marcel 1909, no. 3094, repr. as 3097; Garnier 1989, no. 651 repr. φ



J.246.105 Tête de vieillard, pstl (Jacques-Augustin de Silvestre; vente p.m., Paris, Regnault-Delalande, Geoffroy, 28.II.–25.III.1811, Lot 300 n.r., Fr10.10)

J.246.106 Homme portant un turban, pstl/ppr, 38x28.5 (Besançon, Dufrière, 17.X.1998, Lot 11 repr., attr., Fr13,500)

J.246.107 Tête de garçon, black, red chlk, pstl, 27.5x23.9 (Monaco, Sotheby's, 21–22.VI.1991, Lot 264, est. Fr60–70,000; Karl Lagerfeld; New York, Christie's, 23.V.2000, Lot 104 repr., est. \$15–20,000, \$19,975) Φ



Photo courtesy Christie's

J.246.11 ~variant, 27x24 (Marseille, Verola, 9–10.XII.1989, Lot 30 n.r., as visage de femme, attr. Charles Coypel, €11,434). Lit.: *Gazette Drouot*, repr.; Jeffares 2006, 147CV, as Charles Coypel Φβν



J.246.111 Tête de garçon, cr. clr, 18x13.5 (Marseille; desc.: Paris, Christie's, 22.XI.2021, Lot 6 repr., attr., est. €8–12,000, €8000)φα

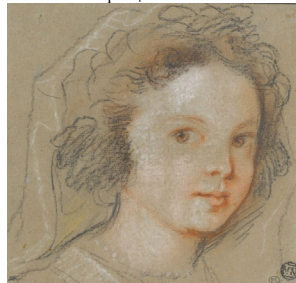


J.246.112 Tête de jeune fille, pierre noire, pstl, 31.6x26.2 (Paris, musée Carnavalet, inv. D.5991. Pierre-Jean Mariette; vente p.m., Paris, Basan, 15.XI.1775 & seq., Lot ?1215, Six sujets & têtes diverses, dont Venus & Enée, tête au pastel, &c., 15 livres 10, with Lot 1216; Jean Viel, baron de Lunas (1728–1777). Jules Maciet (1846–1911); don 1903). Exh.: Paris 1971c, no. 39; Paris 1984a. Lit.: Montgolfier 1982, no. 23 repr., attr.; Garnier 1989, no. 660; Rosenberg 2011, F1627 repr. Φσσ



Photo courtesy musée Carnavalet

J.246.115 Tête de fillette, 15x15.5 (Louvre inv. 25878 bis). Exh.: Paris 1949, no. 11; Paris 1954a, no. 11; Paris 1957b, no. 22; Paris 1958b, no. 4; Warsaw 1962, no. 9, pl. 6. Lit.: Guiffrey & Marcel, no. 3097; Garnier 1989, no. 649 repr. φ



J.246.117 Tête de femme, trois crayons, pstl rose/ppr br., 25.0x26.8, s v “A. Coipel” (Stockholm, Nationalmuseum, inv. NM 2851/1863. Crozat; Paris, 1741, Lot 1059; Carl Gustav Tessin). Exh.: Paris 2016b, no. 83 repr. Lit.: Bjurström 1976, no. 344 repr.; Garnier 1989, no. 657, fig. 580 φσ



J.246.119 Tête de femme, trois crayons, pstl rose/ppr br., 34.5x25.0, s v "A. Coipel" (Stockholm, Nationalmuseum, inv. NM 2852/1863. Crozat; Paris, 1741, Lot 1059; Carl Gustav Tessin). Exh.: Stockholm 1922, no. 6. Lit.: Bjurström 1976, no. 345 repr.; Garnier 1989, no. 656, fig. 579 φ



J.246.121 Tête de femme, trois crayons, pstl rose/ppr br., 35.3x26.8, s v "A. Coipel" (Stockholm, Nationalmuseum, inv. NM 2853/1863. Crozat; Paris, 1741, Lot 1059; Carl Gustav Tessin). Lit.: Bjurström 1976, no. 346 repr.; Garnier 1989, no. 655, fig. 581, ?étude pour Esther, pnt., 1697; Prat 203, fig. 1499 φ



J.246.123 Tête de femme, trois crayons, pstl rose/ppr br., 34.7x24.5, s v "A. Coipel" (Stockholm, Nationalmuseum, inv. NM 2854/1863. Crozat; Paris, 1741, Lot 1059; Carl Gustav Tessin). Exh.: Stockholm 1922, no. 7. Lit.: Bjurström 1976, no. 347 repr.; Garnier 1989, no. 654, fig. 577; Prat 203, fig. 1500 φ



J.246.125 Tête de femme, trois crayons, pstl rose/ppr br., 21.6x18.1, s v "A. Coipel" (Stockholm, Nationalmuseum, inv. NM 2856/1863. Crozat; Paris, 1741, Lot 1059; Carl Gustav Tessin). Lit.: Bjurström 1976, no. 349 repr.; Garnier 1984, p. 135, pl. XXVI, fig. 6; Garnier 1989, no. 653, fig. 578 φ



J.246.127 Tête de femme (Nourri, conseiller au grand conseil; Paris, Brusley, Folliot, 24.II–14.III.1785, Lot 1026 part, 4 livres; Lenoir)

J.246.128 Deux têtes de femme, pstl (Charles-Antoine Coypel; vente p.m., Paris, Mariette, 27.III.1753, Lot 270, 21 livres 12 sols & 15 livres 16 sols)

J.246.129 Quinze têtes, pstl (Antoine Coypel; inv. p.m., Paris, 19.I.1722, 50 livres)

J.246.13 Quatre études de têtes, pstl ou trois crayons (Charles-Antoine Coypel; vente p.m., Paris, Mariette, .IV.1753, Lot 276, 12 livres)

J.246.131 Cinq autres études de têtes, pstl ou aux trois crayons (Charles-Antoine Coypel; vente p.m., Paris, Mariette, .IV.1753, Lot 277 part, 7 or 12 livres 4 sols)

J.246.132 Plusieurs têtes, pstl (Charles-Antoine Coypel; vente p.m., Paris, Mariette, .IV.1753, Lot 345 part, 36 livres 6 sols for whole lot; Glomy)

J.246.133 Apollon, comme Dieu de la Médecine, pstl (Mrs Geoffroy, père et fils [Claude-Joseph Geoffroy (1685–1752); & son fils Claude-François (1729–1753), apothicaires], de l'Académie royale des sciences; vente p.m., Paris, rue Bourtilbourg, 5–16.II.1754, Lot 69, 34 livres 10 sols)

J.246.134 Tête d'une petite fille, pstl, Salon de Toulouse 1769, no. 31 (M. Gounon, secrétaire du roi, 1769)

J.246.135 Jolie tête d'enfant, pstl (Paris, Chariot, Joullain, 27.III.1773 & seq., Lot 232)

J.246.136 Tête de Christ, pstl (M. Saly; Paris Domain, Joullain fils, 14–18.VI.1776, Lot 23, 18 livres 15 sols avec autre tête)

J.246.137 Tête de saint Sébastien, pstl (M. Saly; Paris Domain, Joullain fils, 14–18.VI.1776, Lot

23, 18 livres 15 sols avec autre tête)

J.246.138 Pastel, Salon de Toulouse 1769, no. 21 [?A./?C. Coypel]

J.246.139 L'enfant Jésus et le saint Jean, pstl (M. Saly; Paris Domain, Joullain fils, 14–18.VI.1776, Lot 22, 37 livres). A/r Raphael, *La Sainte Famille*, pnt. (Palais-Royal), grav. N. de Larmessin

J.246.14 Quinze dessins: études de têtes d'hommes, de femmes et d'enfants, etc., crayons, pstl, 27.1x21.7 (Paignon Dijonval 1810). Lit.: Bénard 1810, no. 3060

J.246.141 Le sacrifice d'Isaac (Paris, PIASA, 22.III.2002)

Anon. related pastels

Christine-Antoinette-Charlotte DESMARES (1682–1753), de la Comédie-Française, en *Thalie*, pnt. (Paris, Comédie-Française) ~grav.: Lépicié

J.246.1415 ~?cop. XIX^e, pstl, 83x69 ov. (Lyon, De Baecque, 19.VI.2018, Lot 412 repr., est. €800–1200; Lyon, De Baecque, 25.IX.2024, Lot 480 repr., est. €600–800) φκ

Démocrite, pnt., 1692 (Louvre, inv. MI 1048. La Caze)

J.246.142 ~?cop., pstl, 27x21.5 ov. (Cherbourg, Samuel Boscher, 30.XI.2009, Lot 793 repr., attr. A. Coypel et atelier, est. €6–8000, €8400) φκ



J.246.143 ~cop., pstl, 64.5x53.8 (François Antonovich; Paris, Christie's, 6.X.2014, Lot 144 repr., a/r Charles-Antoine Coypel, est. €500–700) φκ

