

# Neil Jeffares, *Dictionary of pastellists before 1800*

## Online edition

### COTES, Francis

London 1726 – Richmond 1770

#### Part III: Unnamed sitters

J.243.692 Gentleman in a three-cornered hat, blue coat of a ?master of staghounds, pstl/ppr, 60x43, sd ← “FCotes pinx/1747” (Leicester Museums & Art Gallery. J. H. FitzHenry; sale p.m., London, Christie’s, 21.XI.1913, Lot 6, as by Knapton, 28 gns; Renton. Mrs Mary Mitchison, London; Lady Strathcarron, née Jill Rhodes (–1956); London, Christie’s, 25.II.1938, Lot 121, 16 gns; Everett for gallery). Exh.: Paris 1911, no. 72 as by Knapton; Cotes 1971, no. 2, pl. III. Lit.: Johnson 1976, no. 1; Waterhouse 1981; Burns & Saunier 2014, p. 127 repr. Φ



J.243.694 Gentleman, pstl/ppr, 61x44.6, sd ↘ “FCotes px/1750” (London, V&A, P.60-1962. Legs Claude D. Rotch 1962). Exh.: London 2018. Lit.: Lambourne & Hamilton 1980, n.r.; Johnson 1976, no. 8 n.r. φσ



J.243.696 Gentleman in a grey coat, pstl/ppr, 61x45, sd ← “FCotes pxt/1750” (Exeter, Bearne’s, 21.VI.2000, Lot 403; John Mitchell, London, 2003; London, Bonhams, 6.II.2007, Lot 33 repr., est. £2–3000 London, Christie’s, 3.VII.2012, Lot 80 repr., est. £2–3000, £3200 [=£4000]). Lit.: Jeffares 2012b Φσ



Photo courtesy John Mitchell

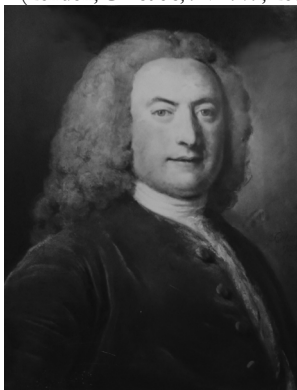
J.243.7 Gentleman, pstl/ppr, 58.5x43, sd ← “FCotes px/1751” (Jules Féral, Paris, 1928).

Lit.: Johnson 1976, Suppl. no. 2 n.r.

J.243.701 Gentleman, pstl/ppr, 62x50, sd ↘ “FCotes...”, c.1751–54 (PC UK 1976). Lit.: Johnson 1976, Suppl. no. 3

J.243.702 = J.243.703, v. J.243.55

J.243.705 Gentleman, pstl, 58.5x43, sd → 1756 (London, Christie’s, 9.V.1979, Lot 42, £140) φ



J.243.707 Gentleman, c.1757 (Earl of Strafford 1937). Lit.: Johnson 1976, p. 162, no. 13, unverified attr.

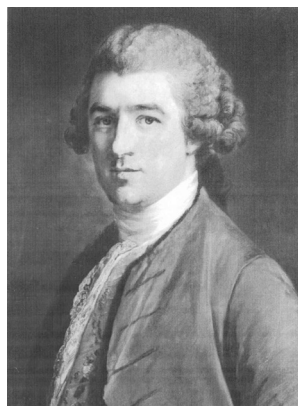
J.243.708 Gentleman in grey-blue coat with fur facings, pstl, 59.7x44.5, sd 1758 (Admiral H. Chatterton; sale p.m., London, Christie’s, 4.V.1933, Lot 115 n.r., 6 gns; Radcliffe)

J.243.7082 A man’s head, pstl, Society of Artists 1760, no. 11

J.243.7084 Gentleman, crayons, Society of Artists 1761, no. 18

J.243.7086 Gentleman, crayons, Society of Artists 1762, no. 19

J.243.709 Gentleman, 60x45, sd ✓ 1766 (London, Bonham’s, 13.II.1969, Lot 238; Arthur Grogan; Abbot & Holder 1970; Nottingham PC 1976). Exh.: Cotes 1971, no. 26 n.r. Lit.: Johnson 1976, no. 191 n.r. Φ



J.243.711 Gentleman holding a portfolio, pstl, 60x44.5, sd ↗ “FCotes px/1767” (Asher Wertheimer; desc. Mrs Joan Conway; London, Sotheby’s, 22.III.2000, Lot 97 repr., est. £4–6000, £4830) Φσ

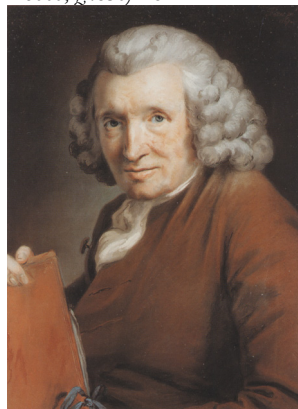
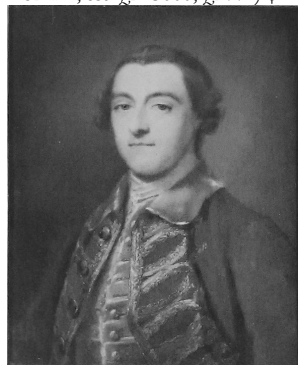


Photo courtesy Sotheby’s

J.243.715 Gentleman in a blue coat with gold frogging and pink waistcoat, pstl, 58.4x43.2, sd 1769 (London, Christie’s, 14.XI.1989, Lot 52 n.r., est. £2–3000, £2771) φ

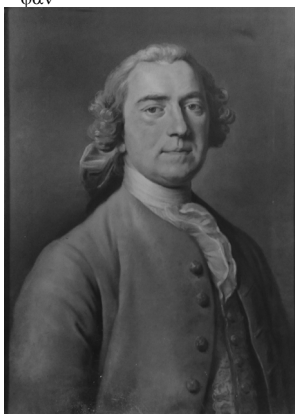


J.243.717 Naval officer in a blue uniform, pstl/ppr, 56x44, [c.1750], in a Kent frame (Greenwich, National Maritime Museum) [new attr., ?; cf. Pond] φσσ

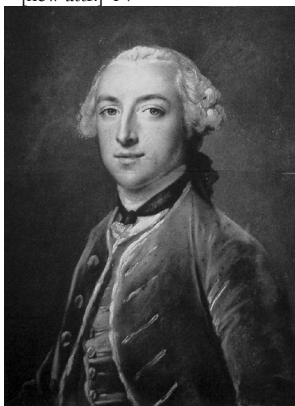


J.243.718 Nobleman in a gown, pstl, 58.5x43 (London, Christie's, 26.II.1917, Lot 30 n.r.)

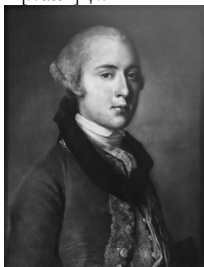
J.243.72 Gentleman, pstl, 56.5x44 (Lord Barnard, Raby Castle). Lit.: Johnson 1976, no. 70 n.r. φαυ



J.243.722 Gentleman, pstl, 61x45 (Zabert, Turin, as Carriera, adv. *Apollo*, .IV.1965, p. lxxi; *L'Œil*, 124, .IV.1985, with pendant, J.243.8392) [new attr.] Φν



J.243.724 Young man in blue-grey coat with silver embroidery, pstl, 61x44.5, inscr. → "FCotes" (London, Christie's, 17.III.1972, Lot 64, as sd 1776, 250 gns; Llewellyn. Chippenham, Wessex Auction Rooms, 27.VI.2020, Lot 688 repr., attr. F. Cotes, £600–800. PC 2023) [??attr.] φπ



J.243.726 Young gentleman, pstl, 45.7x34.9 (William Drummond, *Exhibition of portraits and figures*, c.1980, no. 13 repr.) Φα

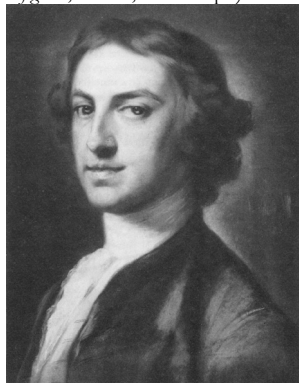


Photo courtesy owner

J.243.729 Young man in a Van Dyck costume, pstl, 61x46 (London, Christie's, 19.XI.1985, Lot 193 repr., est. £1000–1500, £1296. London, Christie's, 9.IV.1991, Lot 46 repr., est. £600–800, £825) Φα



Photo courtesy Christie's

J.243.732 Gentleman in military dress, pstl, 58.4x43.2 (London, Christie's, 14.XI.1989, Lot 3, £6933)

J.243.733 Young man in a white lace collar, pstl/ppr, 54x39.5 (London, Christie's, 9.IV.1991, Lot 46 n.r., £751)

J.243.734 Gentleman, pstl/ppr, 64x48 (London, Bonhams Knightbridge, 7.VII.1993, Lot 3 n.r., attr., est. £100–200, £220)

J.243.735 Gentleman in a red coat, 57.1x44.4 (London, Bonhams Knightsbridge, 15.III.1995, Lot 37 repr., as watercolour, attr., est. £400–600) [?attr.; cf. Pond] φα



J.243.737 Gentleman in red uniform with blue collar, pstl, 59.5x44.5 (Joshua Grigby, Drinkstone Park, Bury St. Edmunds, Suffolk; desc.: John Harcourt Powell; Miss Jean Harcourt Powell; London, Christie's,

14.XI.198?, Lot 48 repr. London, Sotheby's, 15.VI.2000, Lot 162 repr., est. £5–7000, £4500 [=£5400]) Φ



Photo courtesy Sotheby's

J.243.74 Gentleman in a blue coat, pstl, 59x44, s ← (Newbury, Dreweatts, 12.XI.2013, Lot 87 repr., est. £2–3000; Newbury, Dreweatts, 25.III.2014, Lot 1 repr., est. £800–1200) φ



J.243.742 Lady in a white dress trimmed with pink ribbon, pstl, 60x43, sd 1748 (Arthur Cane; London, Christie's, 20.XI.1936, Lot 10 n.r.; Collings). Lit.: Johnson 1976, no. 3 n.r. φ



J.243.744 Lady in a white dress, pstl, 58.4x43.2, 1748 (London, Christie's, 14.XI.1989, Lot 51 n.r., est. £2500–3500, £2178) φ





J.243.746 Lady, pstl/ppr, 60x44, sd 1748 (London, Sotheby's, 14.XI.1996, Lot 75 n.r., est. £400–600, £680)

J.243.747 A lady, as Clarissa, pstl/ppr, c.1748 (Dr Charles Chauncey 1749). Lit.: Johnson 1976, Suppl. no. 1

J.243.7475 Lady in white and blue dress, with pearl necklace, pstl, 58.5x49 ov., sd 1749 (Humphrey Roberts, 8 Queen's Gate Place, London; sale p.m., London, Christie's, 21–23.V.1908, Lot 182 n.r., 20 gns; Rolfe)

J.243.748 Lady, pstl, 56x43, 1750 (London, 14.VI.1983, £400)

J.243.749 Lady with a ruff, pstl/ppr, 59.5x44, sd ← "F. Cotes pxt/1750" (London, Sotheby's, 20.XI.1986, Lot 64 repr., est. £1200–1800, £1200) φ



Photo courtesy Sotheby's

J.243.752 Lady in a flowered silk dress with yellow bow, pstl, 55.5x43, sd "FCotes pxt/1750" (London, Sotheby's, 25–27.IV.1989, Lot 265 repr.; London, Sotheby's, 31.I.1990, Lot 37 repr., est. £400–600, £450 [=£495]) φ



J.243.754 Lady with a blue mantle, pstl, 59x43, sd ← "FCotes px/1750" (London, Bonhams Knightsbridge, 28.IV.2009, Lot 269 repr., Continental sch., late 18<sup>th</sup> century; Gorry Gallery, Dublin, cat. 24.VI.–8.VII.2009, no. 6 repr.) [new attr.] φσ



J.243.756 Lady, pstl, 59.5x44, sd 1751 (Paul Leroi (Léon Gauchez); vente p.m., Paris, 16.XII.1907, Lot 21 n.r., Fr1200; Jules Féral, Paris, 1936). Lit.: Johnson 1976, no. 21 n.r.

J.243.757 Lady in blue dress and brown scarf, pstl, 60x43, sd 1751 (London, Christie's, 1.II.1924, Lot 67, 13 gns; Glass, pfor Grenfell). Lit.: Johnson 1976, no. 23 n.r.

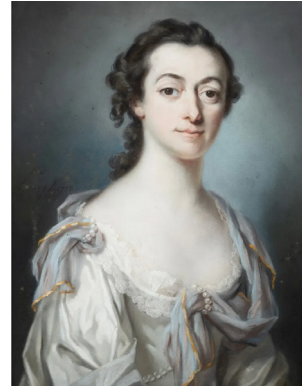
J.243.758 Young woman, pstl/ppr, sd 1751 (London, Sotheby's, 19.XI.1992, Lot 51 repr., £3000)

J.243.759 Lady in a white dress and cap, black lace shawl, pstl, sd → "FCotes px'/ 1751" (PC 2015)φ

J.243.761 Two sisters, pendants, bust length, in be-ribboned dresses with lace collars, pstl, 59.5x44, sd 1751 (Captain Penton. London, Christie's, 18.VI.1980, Lot 68 n.r., £1500) φ



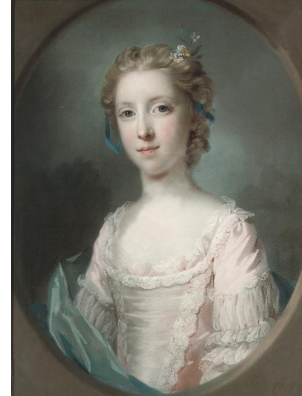
J.243.764 Lady, aged c.25, to right, face nearly full, white dress, low oval bodice, lace frill loose sleeves, shot blue scarf with gold edge, rope of pearls, pstl, 58.5x48.5, sd ← "FCotes px'/ 1752" (Robert Fellowes 1909; Major C. Fellowes, Shotesham Park, Norwich 1976. Agnews, stock no. 44128. US PC 2023; Alameda, California, Michaan's, 15.XII.2023, Lot 179 repr., est. \$700–1000, \$350). Lit.: Duleep Singh 1928, II, p. 297, no. 38 n.r.; Johnson 1976, no. 37 n.r. φσ



J.243.765 Lady in a blue and white dress with pink cloak, pstl, 56x42, sd 1752 ([?Charles J. Wertheimer; vente p.m.] [different properties] London, Christie's, 10.V.1912, Lot 67 n.r., 290 gns; Colnaghi). Lit.: Johnson 1976, p. 162, no. 6, unverified attr.

J.243.766 Lady, 58.5x46, sd 1752 (London, Christie's, 25.VII.1919, Lot 47; Shoebridge). Lit.: Johnson 1976, p. 162, no. 7, unverified attr.

J.243.767 Girl in a pink dress and blue shawl, to left, against a plain background, pstl/ppr, 58.5x43, sd √ "FCotes px' 1754" (London, 1976; London, Christie's, 10.XII.2008, Lot 3 repr., est. £20–30,000, b/i). Lit.: Johnson 1976, Suppl. no. 4 φ



J.243.769 Lady in a white dress and lace scarf, pstl, sd 1755 (Seymour Robert Delmé; London, Christie's, 7.VII.1894, Lot 65, 7½ gns; Rutley). Lit.: Johnson 1976, p. 162, no. 9, unverified attr.

J.243.7694 Lady in blue dress with pearl ornaments, pstl, ov. (London, Christie's, 9.VII.1900, Lot 102 n.r.)

J.243.7695 Lady in pink dress, pstl (London, Christie's, 9.VII.1900, Lot 103 n.r.)

J.243.7696 Lady in pink and green dress, pstl (London, Christie's, 9.VII.1900, Lot 104 n.r.)

J.243.77 Lady in a yellow dress, pstl, 59.7x44.5 (London, Christie's, 11.VII.1903, Lot 116 n.r., 40 gns)

J.243.771 Lady in a blue dress, pstl, 59.7x44.5 (London, Christie's, 11.VII.1903, Lot 117 n.r., 38 gns)

J.243.772 Lady, pstl, 62x52, sd 1756 (Jeffery Whitehead; London, Christie's, 6.VIII.1915, Lot 52, 95 gns; Stettiner). Exh.: London 1889b, no. 195 n.r. Lit.: Johnson 1976, p. 162, no. 10, unverified attr.

J.243.773 Lady, pstl, 60x45, sd 1756 (London, Sotheby's, 12.IV.1995, Lot 80 repr., est. £2–3000; Wilkins) φσ



Photo courtesy Sotheby's

J.243.776 Lady in a white dress tied with blue ribbons, pstl, 61x46, sd 1759 (comtesse de La Béraudière 1911; New York, AAA-Anderson Galleries, 11-13.XII.1930, Lot 292; J. J. Bodell. =?Mrs Stephen Winkworth; London, Sotheby's, 17.V.1961, £120; Weitzner). Exh.: Paris 1911, no. 15. Lit.: Sée 1911, repr. p. 71; Johnson 1976, no. 94 n.r. Φ



J.243.778 Young girl in a pink dress with blue mantle, flowers in her hair, pstl/ppr, sd 1759 (Kingston Lacy, National Trust, inv. 1251141) φ



J.243.779 Woman with a blue mantle trimmed with fur, pearls, pstl/ppr, 60x45, inscr. ← "FCotes pxt 1759" (Pawsey & Paine. Bruges, Carlo Bonte, 23-24.V.2023, Lot 13 repr., as by Frates, est. €800-1200; Bruges, Carlo Bonte, 3-4.X.2023, Lot 960 repr., as English sch., est. €800-1200) [?]?attr.] φpv



J.243.78 Lady, pstl/ppr, 58.4x43.2, sd 1762" (Wilton House. London, Christie's South Kensington, 17.X.2002, Lot 10 repr., unknown sitter, est. £1000-1500, £1528. Harrogate, Morphets, 6.VI.2013, Lot 409 repr., as ?Countess of Pembroke, est. £1000-1500; Ian Stewart, Beal House, Yorkshire; Edinburgh, Lyon & Turnbull, 14-15.X.2020, Lot 77 repr., est. £1500-2500, £5500; acqu.). Lit.: Russell 2021, no. 330, pl. 118, as of Mary, Dowager Countess of Pembroke (1707-1769) [?]?identification] φ?δv



J.243.781 Lady, crayons, Society of Artists 1761, no. 17

J.243.782 Lady's head, crayons, Society of Artists 1762, no. 18

J.243.7825 Lady, crayons, Society of Artists 1763, no. 25

J.243.783 Young lady in a blue and white dress, pstl, 58x45, 1764 (London, Christie's, 13.VII.1965, 55 gns)

J.243.784 Lady, 61x46, sd 17?? [c.1764] (Newburgh Priory). Lit.: Johnson 1976, no. 154

J.243.7845 Lady, crayons, Society of Artists 1766, no. 30

J.243.785 Lady, 60x44, sd 1767 (Lord Petre, Ingatstone Hall). Lit.: Johnson 1976, no. 210

J.243.786 Lady as Hebe, Royal Academy 1769, no. 28. Lit.: Graves 1905, "very pretty" – Walpole; Johnson 1976, no. 290

J.243.787 Lady, crayons, Royal Academy 1770, no. 60

J.243.788 Young lady, pstl, 60x45 (Crema, Museo civico di Crema e del cremasco, inv. 288. Don Foschini Ziglioli). Lit.: Piastrella 1990, attr. Perronneau, now Cotes [?]; cf. Hoare] Φα



Photo courtesy Museo civico di Crema e del cremasco

J.243.791 Young lady, pstl, 60x45 (Crema, Museo civico di Crema e del cremasco, inv. 289. Don Foschini Ziglioli). Lit.: Piastrella 1990, attr. Perronneau, now Cotes [?]; cf. Hoare] Φα

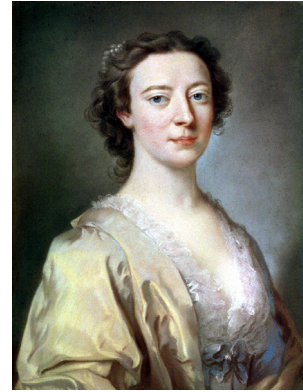


Photo courtesy Museo civico di Crema e del cremasco

J.243.794 Young woman in striped dress, 61x46, c.1755-64 (London, V&A, P.59-1962. Colnaghi cat. 1952, no. 72. Don Claude D. Rotch 1962). Lit.: Johnson 1976, no. 64 n.r.; Lambourne & Hamilton 1980, n.r. φσ



Young lady (Sir Bruce Ingram, as Cotes) [v. English sch.]

J.243.795 Lady, crayons, plate glass (Edward Poore; London, William Richardson, 19.IV.1805, Lot 39, 16s.)

J.243.796 Lady in a pink dress, pstl (London, Robinson & Fisher, 27.VI.1901, Lot 37 n.r., 6½ gns)

J.243.7965 Lady in white dress with pearl ornaments, pstl, 60x44.5 (London, Christie's, 5.VII.1907, Lot 60 n.r., 16 gns; Holt)

J.243.797 Lady, in blue and white dress, pstl, 56x44.5 (Thomas McLean, dealer, of 1 Haymarket; retirement sale, London, Christie's, 18.I.1908, Lot 120 n.r., 9 gns; Cotes)

J.243.799 Lady, pstl, pstl, 59.5x44.5 (London, Christie's, 7.XII.1908, Lot 63, 9 gns; Buttrey)

J.243.7995 Lady in yellow and white dress; & pendant: J.243.7996 lady in blue dress, pstl, 59.5x44.5 (London, Christie's, 28.III.1908, Lot 86 n.r., 20 gns; Howard)

J.243.801 Lady in white dress with blue cloak, pstl, 77.5x62 (London, Christie's, 27.I.1912, Lot 2, £3/15/-; Sackville Gallery)

J.243.802 Head of a lady with pearl necklace, pstl, 47x37 (London, Christie's, 3.II.1912, Lot 17, 6 gns; Wallace)

J.243.803 Lady in loose white drapery, pstl, 68.5x51 (Sir J. G. Tollemache Sinclair, Bt, of Ulbster; London, Christie's, 4.IV.1913, Lot 77, 13 gns; Murray)

J.243.804 Lady, pstl, 60x44.5 (London, Christie's, 21.III.1919, 60 gns)

J.243.805 Lady in blue dress, pearl necklace, pstl, 47x37 (London, Christie's, 16.IV.1923, Lot 95 n.r., 2 gns; A. Davis)

J.243.806 Lady in blue dress, brown scarf, pstl, 61x44.5 (London, Christie's, 24.XI.1924, Lot 34 n.r., 6 gns; Tucker)



J.243.807 Lady in fancy dress, pstl, 60x44.5, [c.1755] (London, Christie's, 17.VII.1925, Lot 20, as Hoare; 15 gns; Cox) [new attr.; same dress as Lady Mary Eyre] Φv



Photo courtesy Christie's

J.243.811 Lady in pink dress with fur collar, pstl, 56x44.5 (Captain G. Pitt-Rivers; London, Christie's, 24.I.1929, 12 gns; Spiller)

J.243.812 =?lady with a string of pearls, m/u (General Pitt-Rivers, 4 Grosvenor Gardens, inv. 30.IV.1894 by Colnaghi, large drawing room). Lit.: Rethinking Pitt-Rivers website, Grosvenor Gardens artwork

J.243.813 Lady in grey dress, yellow bodice, red scarf; & pendant: J.243.814 lady in white dress, blue scarf, pstl, 59.7x44.5 (Arthur Cane; London, Christie's, 20.XI.1936, Lot 11 n.r., 10½ gns; Collings)

J.243.815 Girl with bird; & girl with doll, 37x28 (Col. Sydenham Malthus 1911; his son, Robert Malthus; London, Christie's, 16.XII.1938, Lot 18, 15 gns; Everett)

J.243.816 Lady in white dress and blue scarf, with flowers in her hair, pstl, 61x44.5 (Lionel Wormser Harris; sale p.m., London, Christie's, 21.III.1941, Lot 28 n.r., 8 gns; Martino)

J.243.8165 Lady in white and mauve dress, pstl, 58.5x43 (Duke of Buccleuch; London, Christie's, 1.XI.1946, Lot 3 n.r., 5 gns)

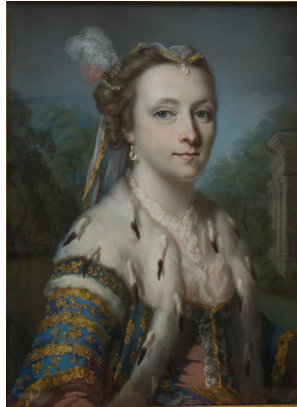
J.243.817 Lady, white dress with blue bows and white lace cap, pstl, 58.5x43 (London, Christie's, 14.III.1952, 30 gns; Colnaghi)

J.243.818 Lady, ½ length, in blue satin dress and white lace collar, pstl, 59.7x45, s (London, Sotheby's, 14.V.1952, £45; Cogswell)

J.243.819 Lady, 61x46 (Mrs H. Protheroe-Beynon, Carmarthenshire). Lit.: Johnson 1976, rejected no. 45

Young girl with spaniel (London, Sotheby's, 13.III.1980, Lot 68 repr.). Lit.: Jeffares 2006, p. 141C [v. Pond]

J.243.821 Young lady in a park, pstl, 60x42, [c.1755] (National Trust for Scotland. London, Christie's, 24.II.1933, Lot 64, as Carriera, 20 gns; Beare. London, Christie's, 18.III.1980, Lot 55 repr., as Cotes, £1300; PC; dep.: National Trust for Scotland; don c.1987) Φ



J.243.824 Young lady, 60.8x45.7 (William Drummond, *Exhibition of portraits and figures*, c.1980, no. 12 repr.) Φ



Photo courtesy owner

J.243.825 Young lady, pstl, 60x44 (London, Phillips, 23.III.1981, Lot 57 repr.) Φ

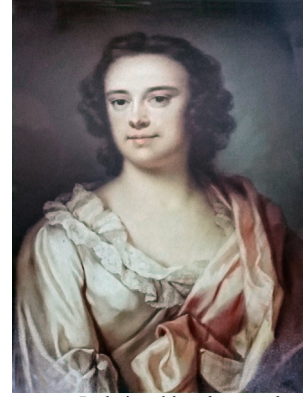


J.243.827 Young lady in a pink dress, pstl, 60x45 (Monaco, Sotheby's, 13.VI.1982, Lot 80 repr.) Φ

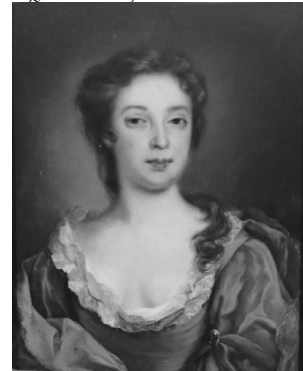


Photo courtesy Sotheby's

J.243.83 Lady in a yellow dress and red wrap, pstl, 60x44.5 (PC, as by Hoare) [new attr., ?] φαv



J.243.832 Lady in a blue dress and grey wrap, pstl, 60x44.5 (London, Christie's, 14.XI.1989, Lot 254 repr., est. £1500–2000, b/i; London, Christie's, 10.VII.1990, Lot 113 repr., est. £1000–1500) Φ



Lady (London, Sotheby's, 14.XI.1996, Lot 57 repr.) [v. Hoare]

J.243.835 Lady, wearing a white dress and blue shawl, pstl/ppr, 59.5x44.5 (London, Sotheby's, 28.V.1998, Lot 601 n.r., est. £400–600, £780 [=£897])

Lady (US art market 2002, as Cotes) [v. Hoare]

J.243.837 Lady in a blue dress, pstl/ppr, 57x44.5, sd ← "FCotes/fecit" (Dover Hall; New York, Christie's, 1–2.IX.2009, Lot 105 repr., est. \$3–5000, €2750) φ



J.243.839 Lady in a blue dress and pink turban, pearl necklace, pstl, 57x43 (PC[Italy]) attr. φ



J.243.8391 Lady in a gold dress with blue-trimmed white mantle, pstl, 61x46, damaged (Haslemere, Nicholson's, 31.X.2018, Lot 142 repr., as circle of Cotes, est. £80; Haslemere, Nicholson's, 27.II.2019, Lot 81 repr., as circle of Cotes, est. £30; Bridport, Busby, 6-7.III.2025, Lot 609 repr., as English sch., 19<sup>th</sup> century, est. £10-20) [autograph; damaged] φv



J.243.8392 Lady in a white dress with blue trimmings and gold chain, pstl, 61x45 (Zabert, Turin, as Carriera, adv. *L'Œil*, 124, .IV.1985, with pendant, J.243.722. Genoa, Cambi, 12.XII.2024, Lot 59 repr., as English sch., est. €2-3,000, €5100) [new attr.] φv



J.243.841 Madonna and Child, pstl/bl. ppr, 69x56, sd √ "Cotes pxt 1751" (San Francisco, FAM, inv. 2023.29.4. London, Sotheby's, 11.XI.1982, Lot 79 repr. Agnews, stock no. 45070. US PC; don Ernest Robert Heinzer (1943-2022)) [=?] J.243.853 or J.243.854] φ



J.243.844 Two young ladies with a dog, pstl/ppr, 66.7x81.3, sd 1757 (Louisville, The Speed Art Museum, inv. 1998.6.2. Seymour Robert Delmé; London, Christie's, 7.VII.1894, Lot 66, 100 gns; E. M. Hodgkins. Schweitzer Gallery, New York, 1978; Alice Speed Stoll, legs 1996) φ



Photo collection of The Speed Art Museum, Louisville, Kentucky

J.243.847 A fruit piece, crayons (Francis Cotes; sale p.m., London, Cavendish Square, Langford, 21-25.II.1771, Lot IV/16)

J.243.848 Various pieces, possibly by Cotes, crayons (Francis Cotes; sale p.m., London, Cavendish Square, Langford, 21-25.II.1771, Lot XI/16-22, 24, 26, 28, 29)

J.243.849 A fryar's head, crayons (Francis Cotes; sale p.m., London, Cavendish Square, Langford, 21-25.II.1771, Lot XI/31, with another)

J.243.85 A dog's head, crayons (Francis Cotes; sale p.m., London, Cavendish Square, Langford, 21-25.II.1771, Lot XI/32)

J.243.851 Cupid, crayons (Francis Cotes; sale p.m., London, Cavendish Square, Langford, 21-25.II.1771, Lot XI/67)

J.243.852 Venus and Cupid, crayons (Francis Cotes; sale p.m., London, Cavendish Square, Langford, 21-25.II.1771, Lot XI/68)

J.243.8525 =?Lady and winged Cupid, crayons (London, Christie's, 28.XI.1800, Lot 79, 9 gns)

J.243.853 A madonna and our Saviour, crayons, a/r Guido Reni (Dr Richard Mead; sale p.m., London, Langford & Baker, 20.III.1754, by Mr Coates)

J.243.854 Virgin and Child, pstl/ppr, a/r Guido Reni (legs Cotes: George Knapton). Lit.: Johnson 1976, Suppl. no. 22 n.r., ??as legs: Robert Cotes

J.243.855 Two unspecified items (Lord Clarendon, Amesbury, Musgrave's lists, 1769)

J.243.8555 A sleeping Jesus, capital, after Morillio, drawing (Charles & Nathaniel Chauncey; London, Greenwood, 18.V.1790, Lot 78, £6/10/-; Taylor)

J.243.856 Unspecified item (Duff House, 1796, Musgrave's lists)

J.243.857 Unspecified item (Wimpole, 1798, Musgrave's lists)

J.243.858 Portrait, oval, crayons (Hodges; London, Christie's, 14.II.1829, Lot 1 part, b/i)

J.243.861 Gentleman in brown coat; & pendant: J.243.862 lady, in white deress with blue scarf, pstl, 46x37 (London, Christie's, 11.VI.1928, Lot 78 n.r., 6s; Blake)