

Neil Jeffares, *Dictionary of pastellists before 1800*

Online edition

CHANDELLE, Maria Dorothea Walpurgis

Frankfurt am Main 1784–1846

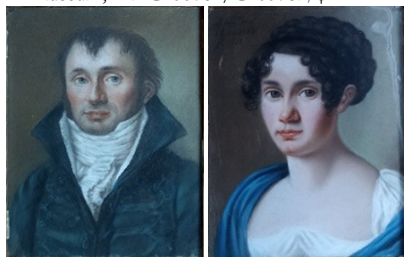
Daughter of Andreas Joseph Chandelle (*q.n.*); she was active as a pastellist in the nineteenth century, producing family portraits, religious and mythological pieces. Of the two dozen pastels catalogued by Hohm, only one bears a date before 1800; a small pastel of an infant Jesus may well be the work of the teenage artist.

Bibliography

Hohm 2019; Hohm 2022; Andreas Hohm, entry in *Frankfurter Personenlexikon* online

Pastels

J.2175.107 Jean-Germain MIOT (1775–1829), secrétaire; & pendant: J.2175.108 Frau (∞ 1812), née Anna Gertrud Chandelle (1780–1866), pstl, 27x21, c.1811 (Frankfurt, Historisches Museum, inv. C100781/C100782) φ



J.2175.111 Der Pfarrer Ernst Xaver TURIN (1738–1810), Domherr und Generalvikar in Mainz, pstl, 1811 (Mainz, Bischöfliches Dom- und Diözesanmuseum, inv. M15546). Lit.: Hohm 2022, fig. 23 φ



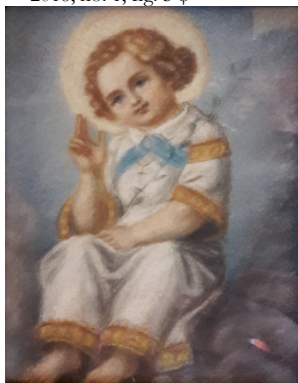
J.2175.116 Anne Rosina WIESEN (1793–1873), pstl, 35.5x30 (PC 2024) φ

J.2175.131 Mädchen am Bach in italienischer Landschaft, pstl, 20x39, sd 1793 (Munich, Hugo Ruef, 24–25.III.1994, Lot 92 n.r., DM900). Lit.: Hohm 2016, no. 24 n.r.

J.2175.151 Junge Dame, pstl/ppr, 31.5x27.5, sd v "Dorothea Chandelle fecit 1801" (Frankfurt, Städel Museum. Don Adolph Freiherr von Holzhausen 1923). Lit.: Hohm 2016, no. φ



J.2175.171 Segnendes Jesuskind, pstl, 13x11.5 ((Frankfurt, Historisches Museum, inv. C100780. PC 2019; acqu. 2024). Lit.: Hohm 2016, no. 1, fig. 5 φ



J.2175.181 Johannes des Evangelisten mit Schriftrollen und seinem Attribut, dem Adler, neben ihm der Kelch mit einer entweichenden Schlange, pstl, 34x28 sd 1811 ((Frankfurt, Historisches Museum, inv. C100772. Freiburg, Frank Peege, 28–30.IV.2021, Lot 1322 repr., est. €400. Acqu. 2024). Lit.: Hohm 2022, fig. 19. A/r cop. a/r Domenichino, pnt. (Hermitage) φ



J.2175.185 Danae, pstl, 36.5x45.4, sd 1817 (Frankfurt, Historisches Museum, inv. C100773)