

Neil Jeffares, *Dictionary of pastellists before 1800*

Online edition

BLYTH, Samuel

Salem, Massachusetts bpt 13.v.1744–brd
13.i.1795

Heraldic and commercial painter as well as maker of harpsichords and spinets; older brother of Benjamin Blyth (*q.n.*). He married twice: in 1767 to Lucy Cleveland; and in 1787, to Sally Rolland, who survived him; four children are recorded. In 1774, he painted the Governor's pew in St Peter's Church, Salem, and was also paid as organist (the instrument had been made by Thomas Johnston, *q.n.*); he also announced plans for a boarding school for girls. A few pastels have been attributed to him rather than his brother, perhaps simply because they are not good enough to be by Benjamin; but more recently (Norton 1995) it has been suggested that Samuel took over responsibility for portraiture after Benjamin's abrupt departure from Salem, perhaps c.1782. None of the pastels listed below can be attributed with certainty.

Bibliography

Foote 1957; Nina Fletcher Little, "The Blyths of Salem...", *Essex Institute historical collections*, CVIII, 1972, pp. 49–57; Norton 1995; Bettina A. Norton, private communication, 2015; Norton 2025

Pastels

[J.1602.081](#) [*olim* [J.16.105](#)] Rachel BABSON (1776–1833) with her sister Susan Babson (1780–) of Gloucester, pstl, 57x43.5, c.1785 (Mount Desert, Maine, Mount Desert Island Historical Society). Lit.: Norton 2025, p. 42 repr., attr. Samuel Blyth φα

[J.1602.1013](#) A child of the JONES family, pstl, 36x27, c.1785 (Golden Bull Tavern, Weston, Massachusetts). Lit.: Norton 2025, p. 44 repr., attr. Samuel Blyth φα

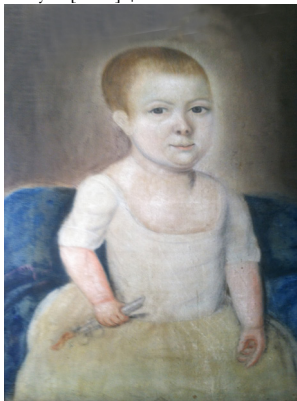
[J.1602.1017](#) A child of the PUTNAM family, pstl, 58x43, c.1784 (Salem, Peabody Essex Museum, inv. 132417). Lit.: Norton 2025, p. 44 repr., attr. Samuel Blyth φα

[J.1602.1016](#) John WARDEN, Jr (c.1778–p.1850), pstl, 57x43, c.1784 (Shelburne Museum, inv. 1958-147.4. Desc.: William Francis Warden. Don Katharine Prentis Murchy 1958). Lit.: Muller 1976, fig. 65, attr. B. Blyth; Norton 2025, p. 44 repr., attr. Samuel Blyth φα



[J.1602.102](#) Mrs Henry WHITE, née Elizabeth Safford (1781–1812), as a small child, pstl/ppr, 50.8x36, c.1781 (Salem, Peabody Essex Museum, 124,689. Acqu. 1941). Lit.:

Foote 1957, p. 79 n.r., as of Elizabeth Stafford by ?Benjamin or Samuel; Norton 2025, p. 44 repr., attr. Samuel Blyth *olim* attr. Benjamin Blyth [*?attr.*] φα



[J.1602.104](#) Man, in light blue coat, waistcoat, white stock, pstl/ppr, 55x41.4, c.1770–90 (Salem, Peabody Essex Museum, 108312). Lit.: Foote 1957, p. 79 n.r., attr.; Norton 2025, p. 47 repr., attr. φα