

# Neil Jeffares, *Dictionary of pastellists before 1800*

## Online edition

### BERJON, Antoine

Lyon 17.V.1754–24.X.1843

The leader of the Lyon group of flower painters worked in a wide range of media including, occasionally, pastel. He became professeur at the École spécial de dessin et des beaux-arts de Lyon. An early pastel self-portrait was given to his fellow teacher there, Fayolle, appointed by Napoléon in 1809 “pour enseigner d’art de traduire les esquisses et de les convertir en patrons”. Berjon’s later autoportrait shows distinctive and vigorous handling, while some of his flower pictures are outstanding. His use of pastel may have been inspired by his friend Hoin (*q.v.*) whose portrait he drew (Heino, Hannema-de Stuers Fundatie). Berjon worked in Paris between 1791 and 1810 (exhibiting in the salon of 1804 from place des Victoires, no. 17), before returning to his native Lyon. He signed the petition to have Vigée Le Brun’s name removed from the list of émigrés (1799). He was still listed in the *Almanach du commerce de Paris* in 1811 (place des Victoires, 3). An undated portrait of Berjon by François Dumont l’aîné, in black and red chalk (c.1796), was sold by Artcurial (10.IV.2013, Lot 61).

### Bibliography

Bellier de La Chavignerie & Auvray; Bénézit; *Bulletin de Lyon*, 1.XI.1809; Chaudonneret 1982; Custodero 1989; Joannès Gaubin, “Antoine Berjon, peintre de fleurs”, *Revue du Lyonnais*, XII, 1856, pp. 159–76; Germain 1919; Grove 2000; Hardouin-Fugier & Grafe 1978; Lemoine-Bouchard 2008; Lyon 1982; Nagler 1835–52; Paris 1974b; Ratouis de Limay 1946; Joseph J. Rishel, “A Lyonnais flower piece by Antoine Berjon (1754–1843)”, *Philadelphia Museum of Art bulletin*, LXXVIII/336, 1982, pp. 16–24; Sanchez 2004; Saur; Scott 1986; Thieme & Becker; anon., “Un peintre provincial: Antoine Berjon”, *La Renaissance de l’art français et des industries de luxe*, VI.1919, p. 242ff

### Pastels

J.145.101 AUTO PORTRAIT, pstl, 18x15.5 ov., inscr. verso “Portrait de M. Berjon peintre lyonnais fait par lui-même à l’âge de 25 ou 26 ans. Donné par lui à M. Fayolle son ami”, [c.1780] (don: Fayolle, professeur à l’Ecole de dessin de Lyon. Lyon, Chenu, Bérard, Péron, 19.VI.2011, Lot 11 repr., est. €4–5000, €9000. London, Christie’s, 3.VII.2012 Lot 79 repr., est. £4–6000, £4200 [=£5250]). Lit.: *Gazette Drouot*, 17.VI.2011, p. 187 repr.; Jeffares 2012b φσ



J.145.103 AUTO PORTRAIT, pstl, 66.8x56 ov. (Lyon, mBA, inv. A.3137. Desc.; acqu. 1844). Exh.: Bordeaux 1958, no. 143 n.r. Lit.: Germain 1919, p. 242 repr.; Chaudonneret 1982, no. 12 repr.; Joseph J. Rishel, “A lyonnais flower piece by Antoine Berjon (1754–1843)”, *Philadelphia Museum of Art bulletin*, LXXVIII/336, 1982, pp. 16–24, fig. 1; Durey 1988, p. 86 repr. clr Φ



Photo © Musée des Beaux-Arts - cliché Studio Basset

J.145.106 ~repl., pstl, 62x44 rect. (Wilmington, Horvitz Collection, inv. D-F-1297. Vannes, Jack-Philippe Ruellan, 4.II.2012, Lot 87, attr. Ducreux, inconnu, est. €3–4000, €3718; Galerie Alexis Bordes, cat. 2012, no. 9 repr., as Berjon; acqu. 2014). Lit.: Paris 2017b, no. XXVII, p. 585 repr. [new attr. 2012] φ



~cop., black, red chlk/ppr, 29.2x21, inscr. “A. Berjon Peintre/d’apres un pastel de lui/Musée saint Pierre” (New York, Doyle, 29.I.2013, Lot 82 part)

J.145.109 Gabriel DUTILLEU (1757–1828), fabricant d’étoffes de soie à Lyon, pstl, c.70x50, sd ← 1791 (France PC 2005) Φ



Photo courtesy owner

J.145.1095 Mathieu-Melchior FAYOLLE (1757–1833), agent de change à Lyon, pstl, 30.5x22, inscr. verso “M. Mathieu Melchior Fayolle, pastel par son ami Berjon” (Paris, Daguerre, 4.XII.2024, Lot 9 repr., attr. est. €300–400) φαυ



J.145.112 Fillette à la poupée, 54x44 (Jacques Ernest-May 1927). Exh.: Paris 1927a, no. 2, pl. XC-131. Lit.: Ratouis de Limay 1946, pl. I.III/80. ?Attr. Φα



LARGER IMAGE

J.145.114 Nature morte de raisins, poires, melon et amandes sur un entablement, pstl, pierre noire, 35x52, sd ↓ 1773 (3.IV.1998. London, Sotheby’s, 5.VII.2000, Lot 99 repr., est. £4–6000; Paris, Drouot Salle 7, Chochon-Barré Allardi, 17.XII.2001, Lot 40 repr., est. ff20–30,000, b/i) Φσ



A. Berjon 1773

Photo courtesy Sotheby's

J.145.118 Grapes in a marble vase and a pear, two apples and a glass vase on a ledge, pstl, 46x35.5, sd v "Berjon. 13/Vand. an 10" [1801] (London, Christie's, 21.XI.1996, Lot 25 repr., est. £30–50,000, £28,000) φσ



J.145.112 Fruits peints au pastel, Salon de 1804, no. 22

J.145.121 Nature morte aux pommes et aux raisins, pstl/ppr, 47.5x72, c.1815–25 [?], frame by Claude Pepin fl.1775–85 (London, Christie's, 21.XI.1996, Lot 26 repr., est. £10–15,000, £15,000. Fondation Asbjorn Lunde; Paris, Sotheby's, 14.VI.2023, Lot 151 repr., est. €2500–3500, €40,640) φσ



J.145.123 Coupe de fruits, raisins blancs et noirs, pstl, pierre noire, gch. blanche, 46x48.5 (Lyon, mBA, inv. H845). Lit.: Germain 1919, p. 246 repr. Φ

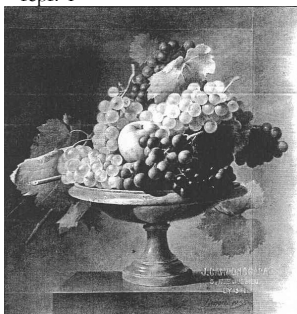


Photo © Musée des Beaux-Arts - cliché Studio Basset

J.145.126 ~cop. Jean-Louis-Laurent Jogues (1818–), pstl, 43x50 (Paris, Drouot, Audap-Mirabaud, 15.XII.2010, Lot 54 repr.)

J.145.127 Coupe de fruits, pstl/ppr, 44x38.5 (Mâcon, musée des Ursulines, inv. A.32. Don François Dupasquier 1874) Φ

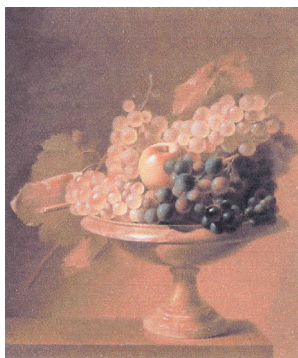


Photo courtesy musée des Ursulines

J.145.113 Jeté de tulipes et de cerisiers doubles, pstl/ppr, 48x36 (Lyon, Guillaumot, 15.V.1990, Lot 7 n.r., €13,263)

J.145.131 Studies of vine leaves, pstl/bl. ppr, 26.4x29.8 (unidentified collector's mark, CG. London, Christie's South Kensington, 9.VII.2001, Lot 144 n.r., est. £300–400, £118) σ

J.145.132 Trophées de chasse au lièvre; & pendant:

J.145.133 au colvert, pstl/prepared canvas, 65x52, s v "At.Berjon", c.1810 (Washington, NGA, inv. 2019.3.2/1. Galerie Charles Balay, Lyon, c.1970; Robert La Faye de Micheaux (1903–1984), conservateur du musée des Arts décoratifs de Lyon; sa fille, Mme Louis Cottin, née Hedwige La Faye de Micheaux (1935–). Lyon, Chenu, Bérard, Péron, 19.VI.2011, Lot 20 repr., est. €10–15,000, €10,000. Galerie Michel Descours, exh. *Le Dessin en couleurs du XVII<sup>e</sup> au XXI<sup>e</sup> siècle*, 2013, no. 8/9; Salon du dessin 2017, 2018; acqu. 2019, Patrons' Permanent Fund). Exh.: Washington 2019 φσ



#### Portraits in other media

Gabriel DUTILLIEU; & pendant: sa femme, née Victoire Eymard, aquarelle, c.25x20 ov., p.1791 (desc.; French PC 2005). Exh.: Lyon 1914, repr./n.r. Lit.: Jeffares 2006, p. 55Aiii, as pstl Φ